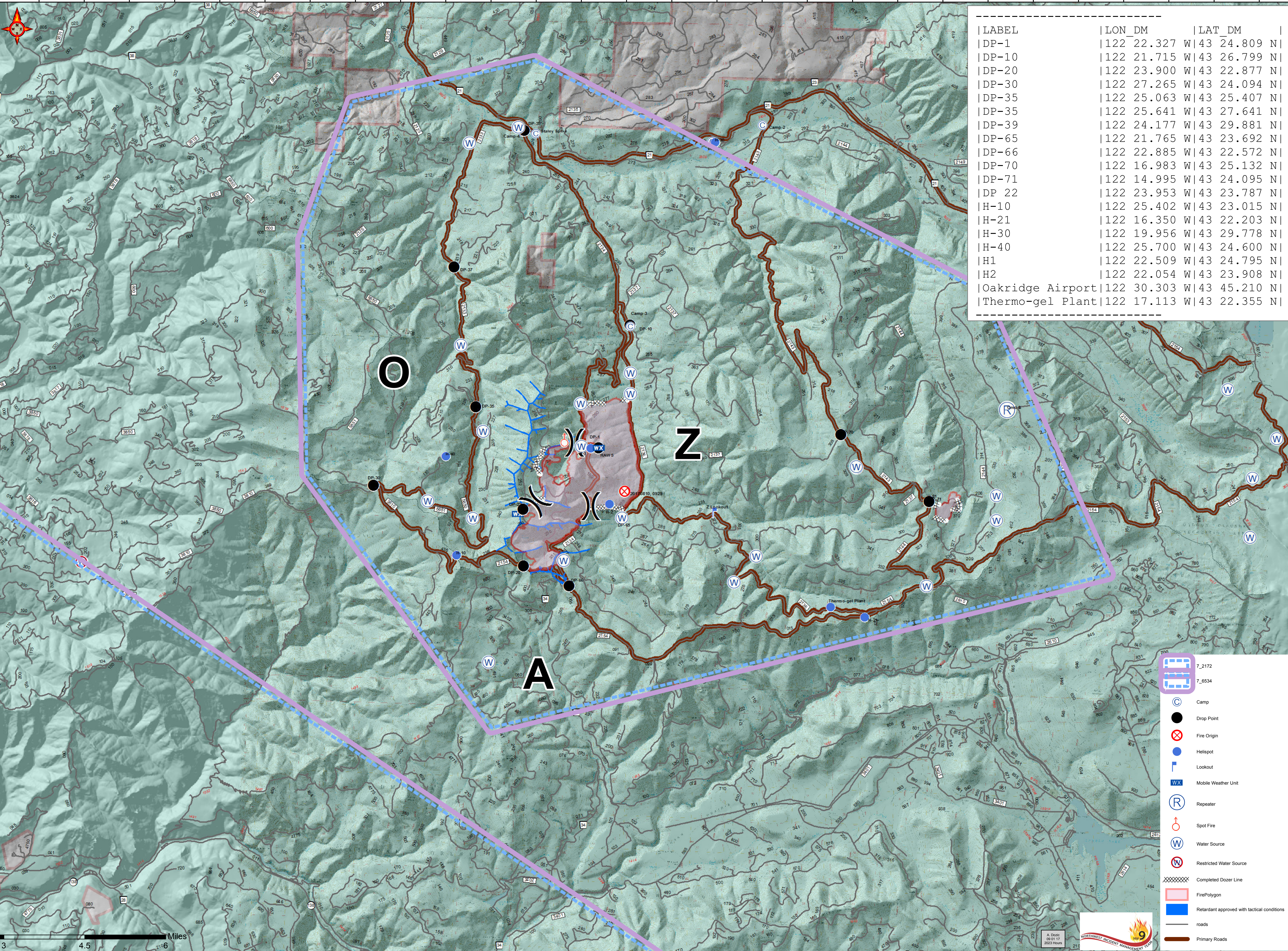


122°39'W 122°38'W 122°37'W 122°36'W 122°35'W 122°34'W 122°33'W 122°32'W 122°31'W 122°30'W 122°29'W 122°28'W 122°27'W 122°26'W 122°25'W 122°24'W 122°23'W 122°22'W 122°21'W 122°20'W 122°19'W 122°18'W 122°17'W 122°16'W 122°15'W 122°14'W 122°13'W 122°12'W 122°11'W 122°10'W 122°9'W 122°8'W

**Staley Fire  
TFR Map**  
OR-WIF-170174  
09/02/2017  
Approx: 2,191 ac  
Tumble Bug 2  
Approx: 87 ac  
as of 08/31/2017@2207



LABEL	LONGITUDE	LATITUDE
DP-1	122 22.327 W	43 24.809 N
DP-10	122 21.715 W	43 26.799 N
DP-20	122 23.900 W	43 22.877 N
DP-30	122 27.265 W	43 24.094 N
DP-35	122 25.063 W	43 25.407 N
DP-35	122 25.641 W	43 27.641 N
DP-39	122 24.177 W	43 29.881 N
DP-65	122 21.765 W	43 23.692 N
DP-66	122 22.885 W	43 22.572 N
DP-70	122 16.983 W	43 25.132 N
DP-71	122 14.995 W	43 24.095 N
DP 22	122 23.953 W	43 23.787 N
H-10	122 25.402 W	43 23.015 N
H-21	122 16.350 W	43 22.203 N
H-30	122 19.956 W	43 29.778 N
H-40	122 25.700 W	43 24.600 N
H1	122 22.509 W	43 24.795 N
H2	122 22.054 W	43 23.908 N
Oakridge Airport	122 30.303 W	43 45.210 N
Thermo-gel Plant	122 17.113 W	43 22.355 N

- 7,2172
- 7,6534
- Camp
- Drop Point
- Fire Origin
- HeliSpot
- Lookout
- Mobile Weather Unit
- Repeater
- Spot Fire
- Water Source
- Restricted Water Source
- Completed Dozer Line
- Fire Polygon
- Retardant approved with tactical conditions
- roads
- Primary Roads

0 0.75 1.5 3 4.5 6 Miles

122°38'W 122°37'W 122°36'W 122°35'W 122°34'W 122°33'W 122°32'W 122°31'W 122°30'W 122°29'W 122°28'W 122°27'W 122°26'W 122°25'W 122°24'W 122°23'W 122°22'W 122°21'W 122°20'W 122°19'W 122°18'W 122°17'W 122°16'W 122°15'W 122°14'W 122°13'W 122°12'W 122°11'W 122°10'W 122°9'W 122°8'W

