

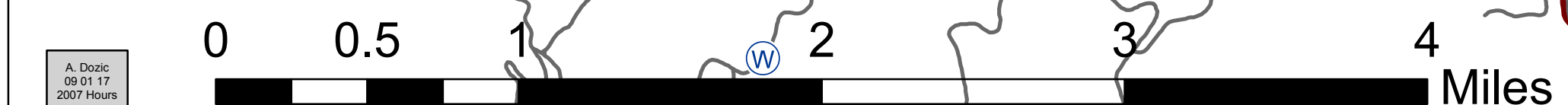
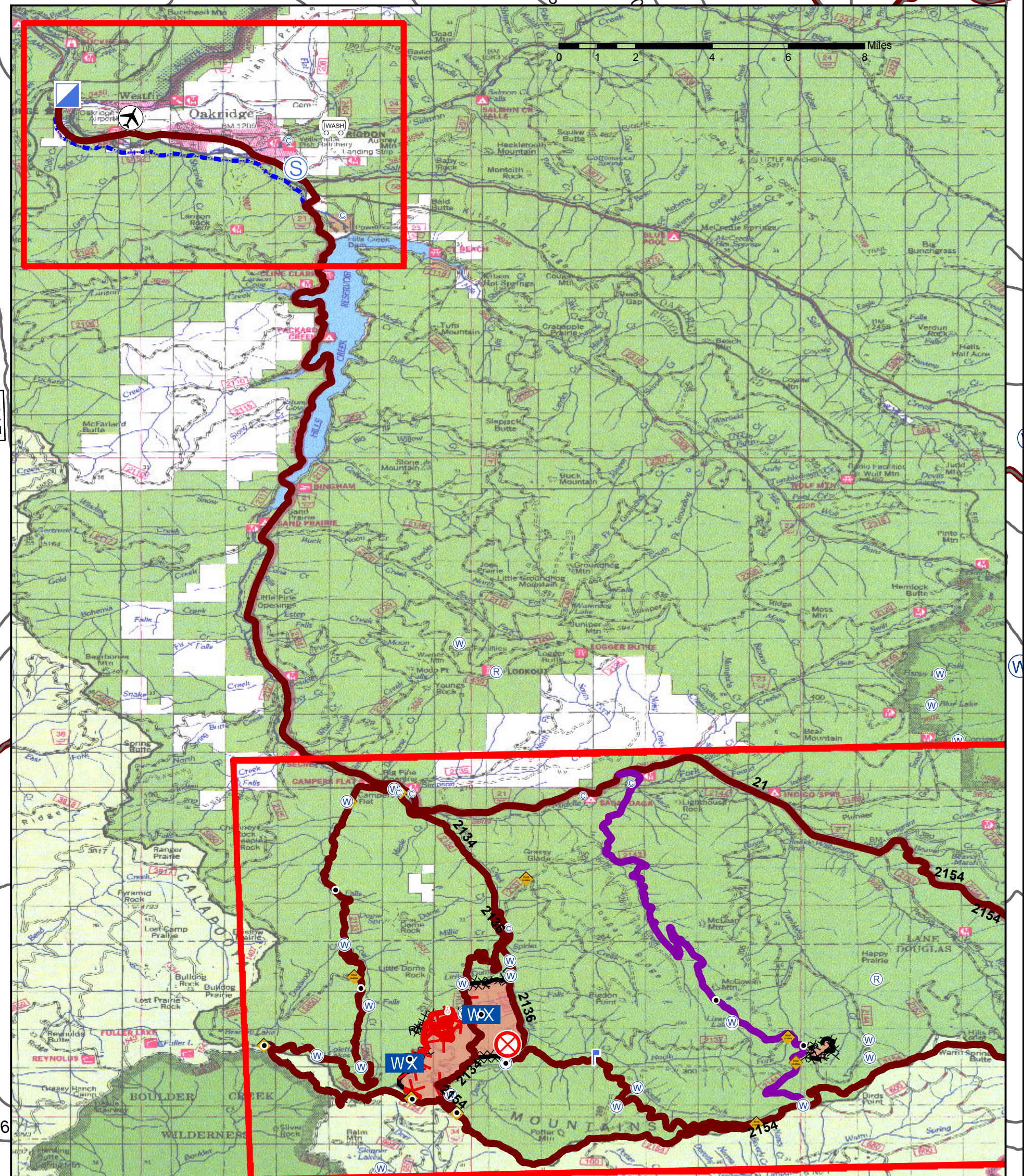
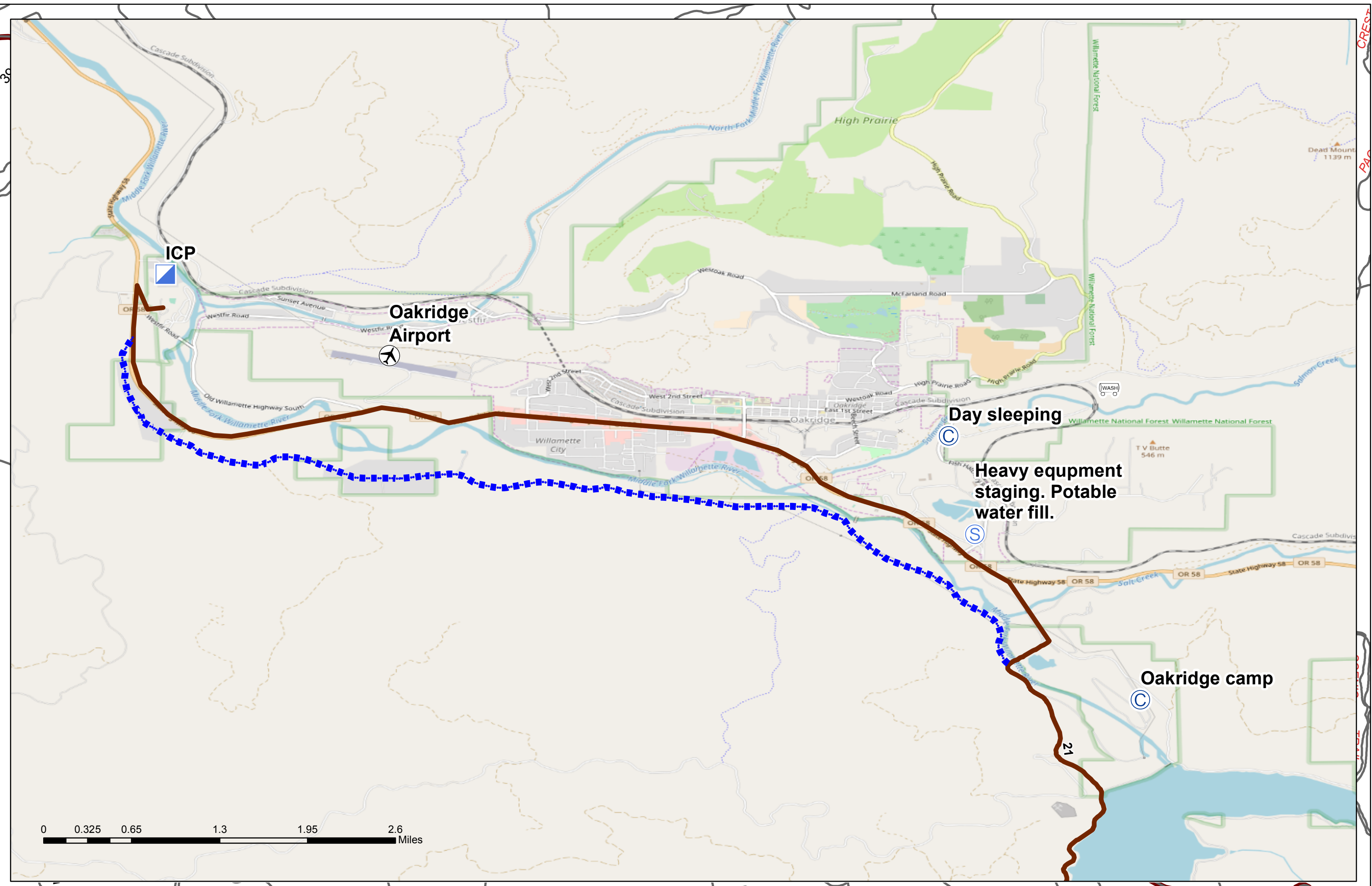
**Staley Fire  
Transportation Map**  
OR-WIF-170174  
09/02/2017  
Approx: 2,191 ac  
Tumble Bug 2  
Approx: 87 ac



- Weed wash
- Road closed
- Road blocked
- Airstrip or Airport
- Fire Origin
- Camp
- Drop Point
- Helispot
- Incident Command Post
- Lookout
- Mobile Weather Unit
- Repeater
- Spot Fire
- Staging Area
- Water Source
- Alternate route
- Uncontrolled Fire Edge
- Completed Dozer Line
- Completed Line
- Hand Line
- Road as Completed Line
- roads
- Primary roads
- road 2143
- Fire Polygon

- Monitor and announce your Mile Marker location on the 2143 Road.  
- Tac 4 will be used by all travelers.  
- Downhill traffic will have priority

- Monitor and announce your Mile Marker location on the 2143 Road.  
- Tac 4 will be used by all travelers.  
- Downhill traffic will have priority



A. 0909  
09/01/17  
2007 Hours