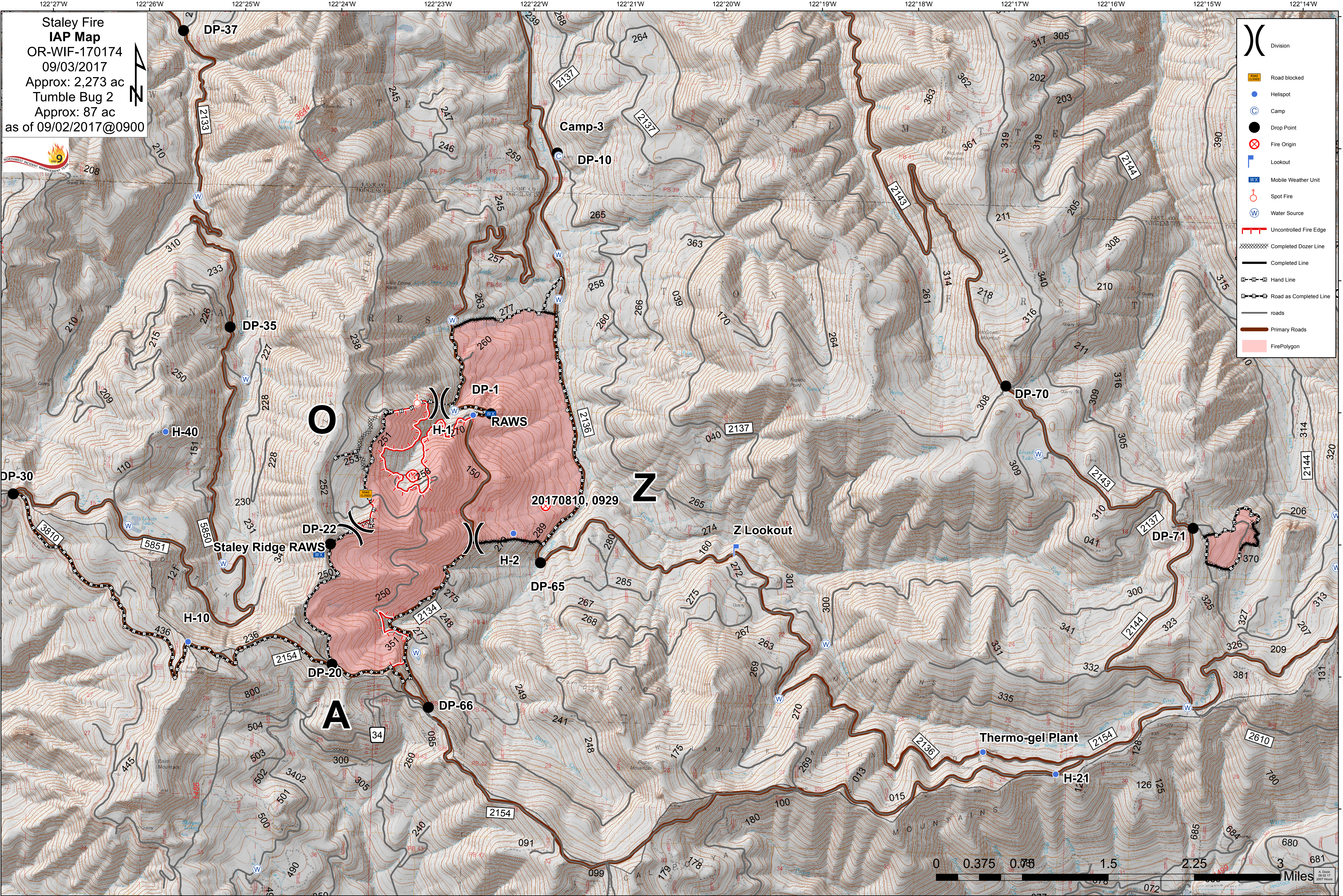


122°27'W 122°26'W 122°25'W 122°24'W 122°23'W 122°22'W 122°21'W 122°20'W 122°19'W 122°18'W 122°17'W 122°16'W 122°15'W 122°14'W

**Staley Fire
IAP Map**
OR-WIF-170174
09/03/2017
Approx: 2,273 ac
Tumble Bug 2
Approx: 87 ac
as of 09/02/2017@0900

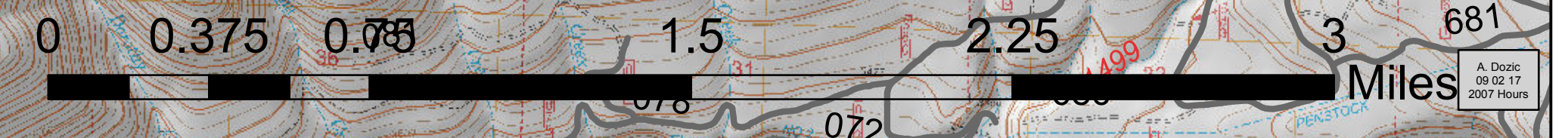


43°27'N
43°26'N
43°25'N
43°24'N
43°23'N
43°22'N



- (X) Division
- ☐ Road blocked
- Helispot
- ⊙ Camp
- Drop Point
- ⊗ Fire Origin
- ⚡ Lookout
- Ⓜ Mobile Weather Unit
- ⊙ Spot Fire
- Ⓜ Water Source
- Uncontrolled Fire Edge
- ⊘ Completed Dozer Line
- Completed Line
- ⊘ Hand Line
- ⊘ Road as Completed Line
- roads
- Primary Roads
- FirePolygon

43°27'N
43°26'N
43°25'N
43°24'N
43°23'N
43°22'N



122°27'W 122°26'W 122°25'W 122°24'W 122°23'W 122°22'W 122°21'W 122°20'W 122°19'W 122°18'W 122°17'W 122°16'W 122°15'W 122°14'W