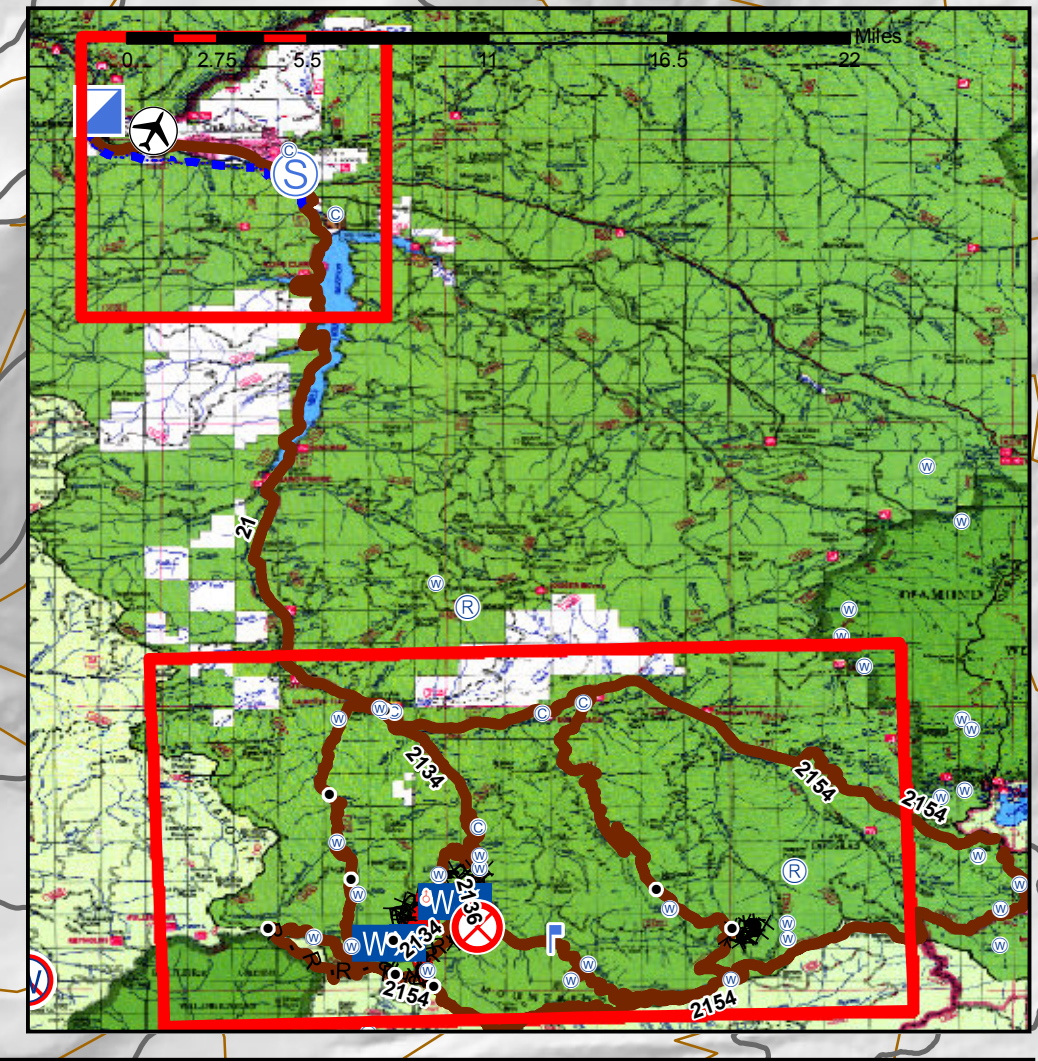
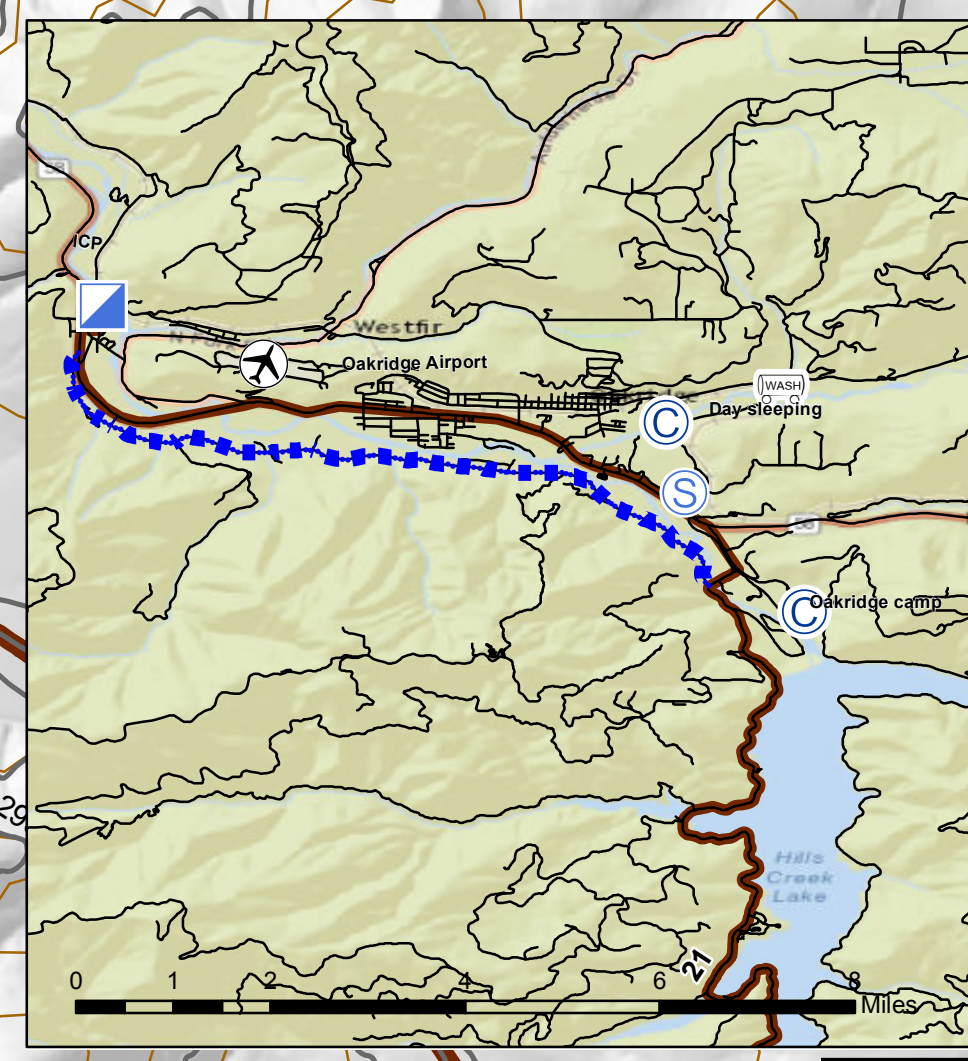
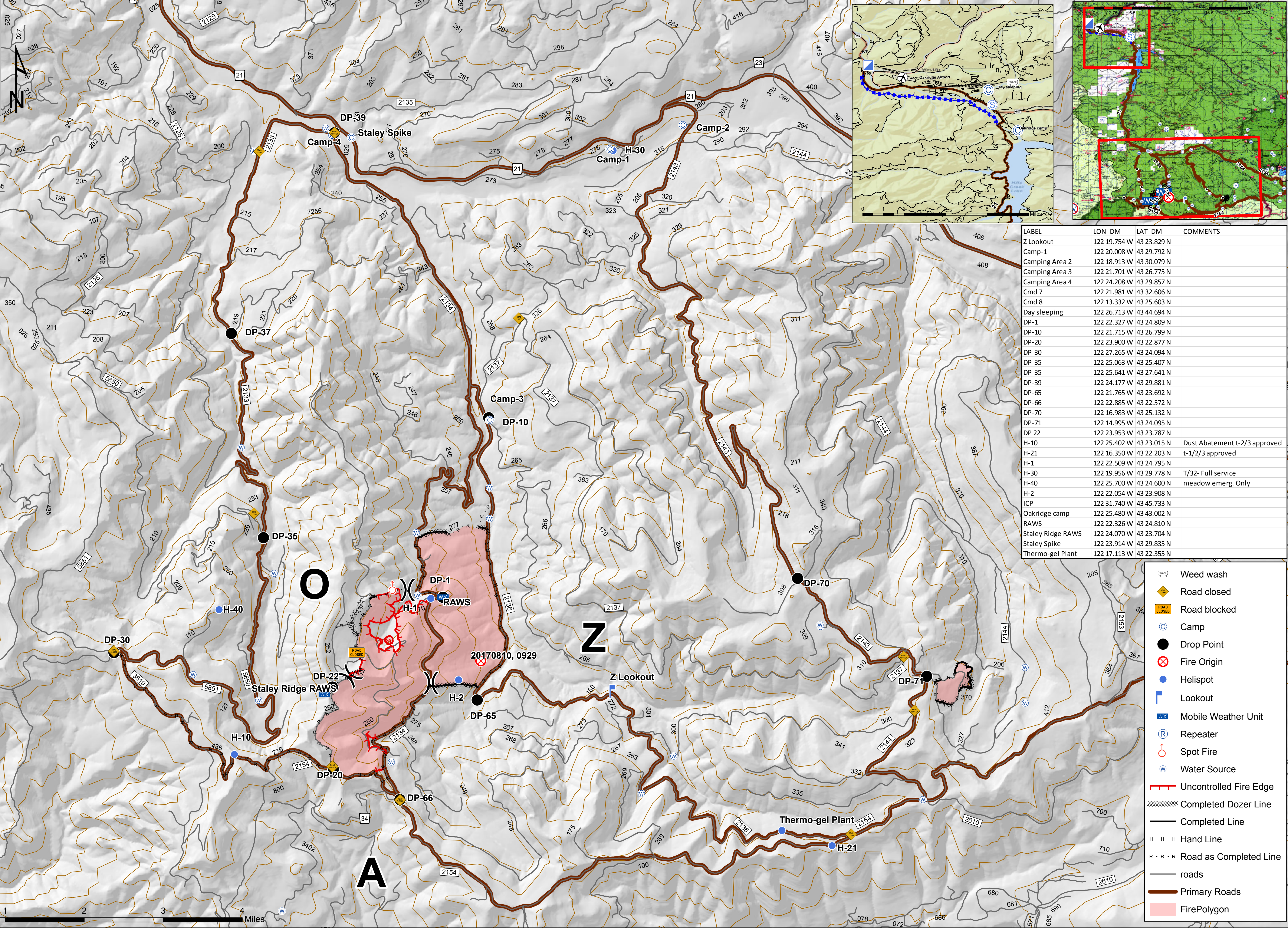


Staley Fire
Commo Map
 OR-WIF-170174
 09/03/2017
 Approx: 2,273 ac
 Tumble Bug 2
 Approx: 87 ac



LABEL	LON_DM	LAT_DM	COMMENTS
Z Lookout	122 19.754 W	43 23.829 N	
Camp-1	122 20.008 W	43 29.792 N	
Camping Area 2	122 18.913 W	43 30.079 N	
Camping Area 3	122 21.701 W	43 26.775 N	
Camping Area 4	122 24.208 W	43 29.857 N	
Cmd 7	122 21.981 W	43 32.606 N	
Cmd 8	122 13.332 W	43 25.603 N	
Day sleeping	122 26.713 W	43 44.694 N	
DP-1	122 22.327 W	43 24.809 N	
DP-10	122 21.715 W	43 26.799 N	
DP-20	122 23.900 W	43 22.877 N	
DP-30	122 27.265 W	43 24.094 N	
DP-35	122 25.063 W	43 25.407 N	
DP-35	122 25.641 W	43 27.641 N	
DP-39	122 24.177 W	43 29.881 N	
DP-65	122 21.765 W	43 23.692 N	
DP-66	122 22.885 W	43 22.572 N	
DP-70	122 16.983 W	43 25.132 N	
DP-71	122 14.995 W	43 24.095 N	
DP 22	122 23.953 W	43 23.787 N	
H-10	122 25.402 W	43 23.015 N	Dust Abatement t-2/3 approved
H-21	122 16.350 W	43 22.203 N	t-1/2/3 approved
H-1	122 22.509 W	43 24.795 N	
H-30	122 19.956 W	43 29.778 N	T/32- Full service
H-40	122 25.700 W	43 24.600 N	meadow emerg. Only
H-2	122 22.054 W	43 23.908 N	
ICP	122 31.740 W	43 45.733 N	
Oakridge camp	122 25.480 W	43 43.002 N	
RAWS	122 22.326 W	43 24.810 N	
Staley Ridge RAWS	122 24.070 W	43 23.704 N	
Staley Spike	122 23.914 W	43 29.835 N	
Thermo-gel Plant	122 17.113 W	43 22.355 N	

- Weed wash
- Road closed
- Road blocked
- Camp
- Drop Point
- Fire Origin
- Helispot
- Lookout
- Mobile Weather Unit
- Repeater
- Spot Fire
- Water Source
- Uncontrolled Fire Edge
- Completed Dozer Line
- Completed Line
- Hand Line
- Road as Completed Line
- roads
- Primary Roads
- FirePolygon

