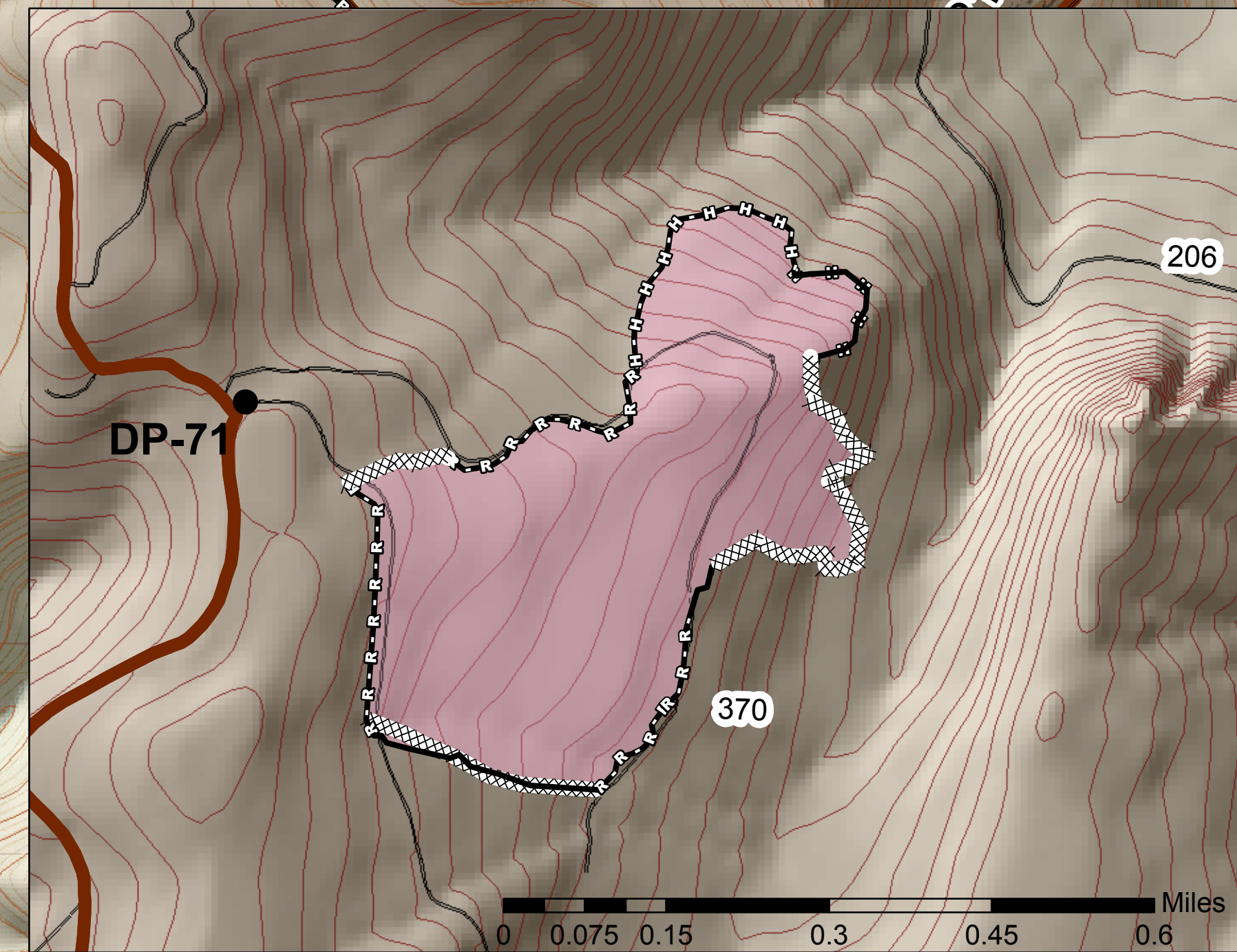
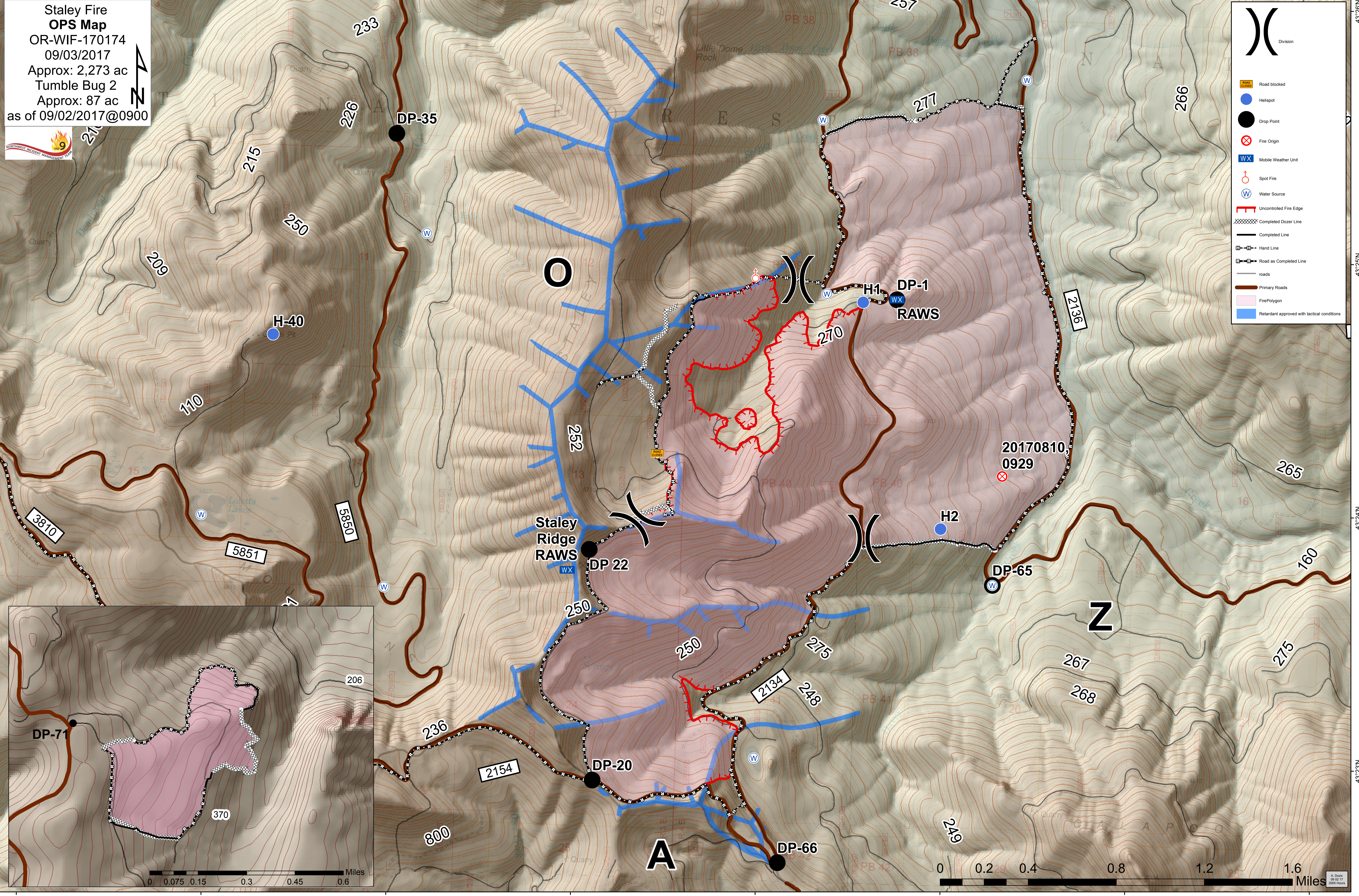


Staley Fire
OPS Map
OR-WIF-170174
09/03/2017
Approx: 2,273 ac
Tumble Bug 2
Approx: 87 ac
as of 09/02/2017@0900



- Division
- Road blocked
- Helispot
- Drop Point
- Fire Origin
- Mobile Weather Unit
- Spot Fire
- Water Source
- Uncontrolled Fire Edge
- Completed Dozer Line
- Completed Line
- Hand Line
- Road as Completed Line
- roads
- Primary Roads
- Fire Polygon
- Retardant approved with tactical conditions



0 0.075 0.15 0.3 0.45 0.6 Miles

0 0.2 0.4 0.8 1.2 1.6 Miles

122°27'W 122°26'W 122°25'W 122°24'W 122°23'W 122°22'W 122°21'W 122°20'W

43°25'N

43°24'N

43°23'N

43°26'N

43°25'N

43°24'N

43°23'N

A Date: 09/02/17 0900 Hours