

# STALEY FIRE OR-WIF-170174 BRIEFING Map

Datum: North American 1983

JONES FIRE BRANCH II

09/04/2017

Day Shift

Perimeter as of: 09/03/17 @ 2000

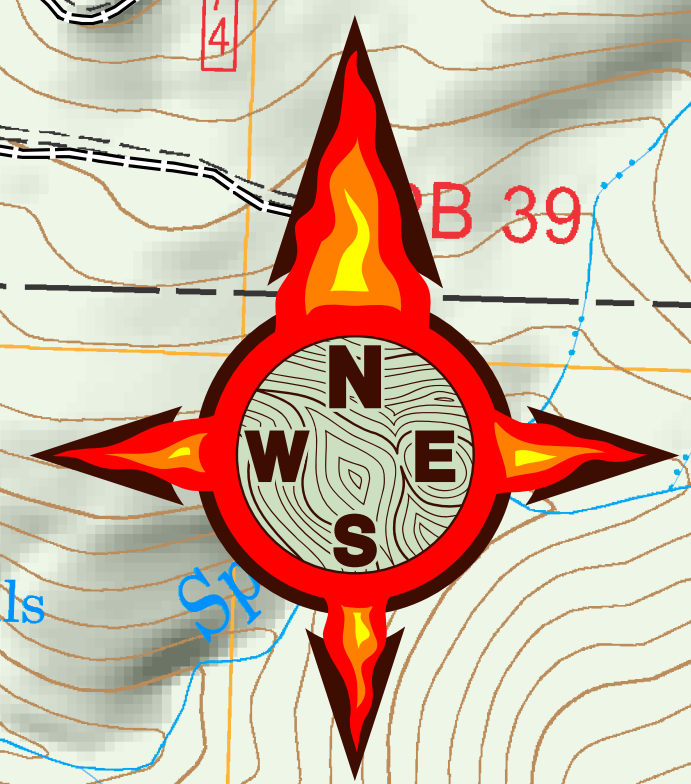
Approx: 2,252 ac

# BRANCH II

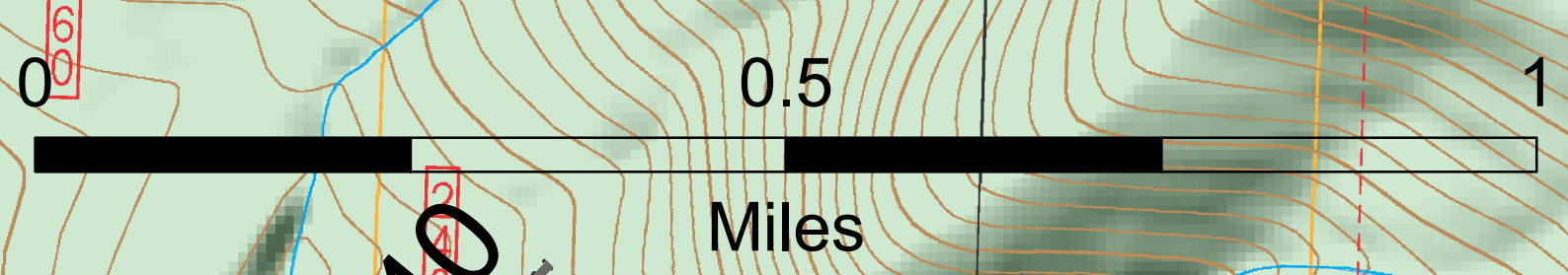
# DIV O

# DIV Z

# DIV A



S. Bushnell  
09 04 17  
0735 Hours



- Drop Point
- ⊗ Fire Origin
- Helispot
- WX Mobile Weather Unit
- ♂ Spot Fire
- W Water Source
- Uncontrolled Fire Edge
- Completed Dozer Line
- Completed Line
- Hand Line
- Road as Completed Line
- Primary Road
- Light-Duty Road
- Unimproved Road
- Closed Road
- Unknown Road
- Umpqua National Forest
- Willamette National Forest