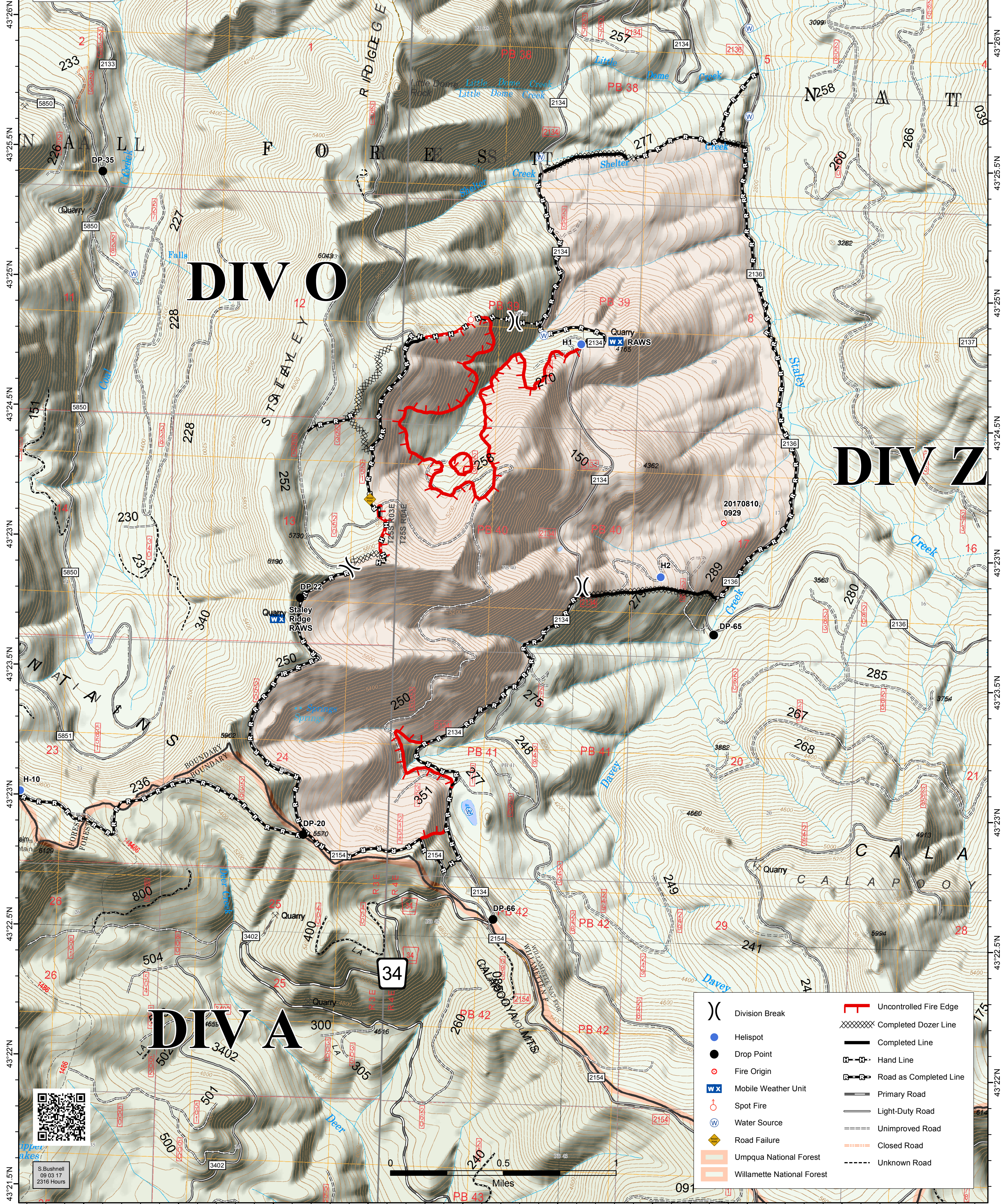
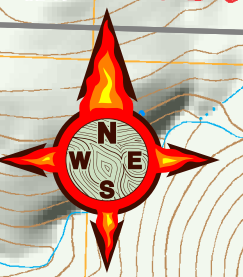


122°25.5'W 122°25'W 122°24.5'W 122°23'W 122°23.5'W 122°23'W 122°22.5'W 122°22'W 122°21.5'W 122°21'W 122°20.5'W

STALEY FIRE
JONES FIRE BRANCH II
OR-WIF-170174
OPS Map
Datum: North American 1983
09/04/2017
Day Shift
Perimeter as of: 09/02/17 @ 0900
Approx: 2,273 ac

BRANCH II



DIV O

DIV Z

DIV A

	Division Break		Uncontrolled Fire Edge
	Helispot		Completed Dozer Line
	Drop Point		Completed Line
	Fire Origin		Hand Line
	Mobile Weather Unit		Road as Completed Line
	Spot Fire		Primary Road
	Water Source		Light-Duty Road
	Road Failure		Unimproved Road
	Umpqua National Forest		Closed Road
	Willamette National Forest		Unknown Road



S. Bushnell
09 03 17
2316 Hours

122°25'W 122°24.5'W 122°23'W 122°23.5'W 122°23'W 122°22.5'W 122°22'W 122°21.5'W 122°21'W 122°20.5'W