

# STALEY FIRE OR-WIF-170174 Briefing Map

Datum: North American 1983

JONES FIRE BRANCH II

09/05/2017

Day Shift

Perimeter as of: 09/03/17 @ 2000

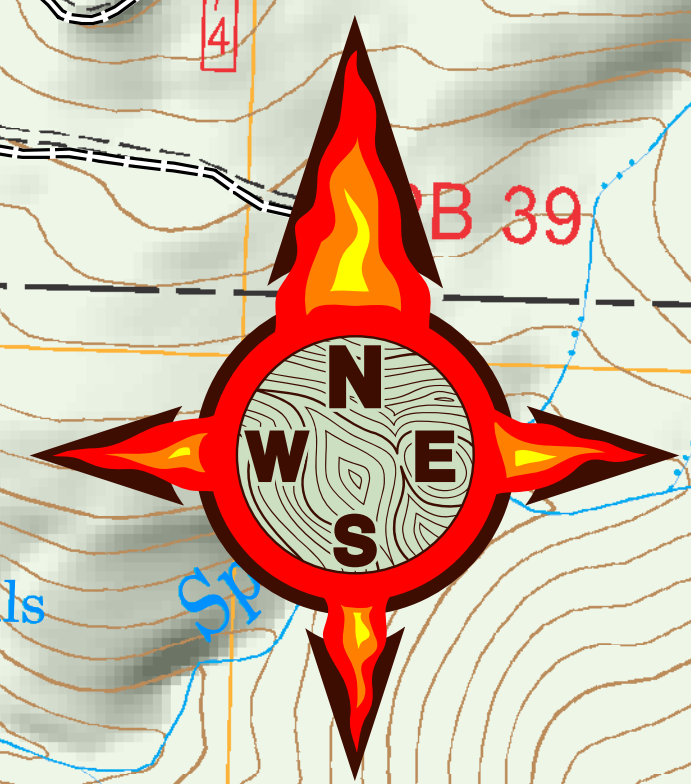
Approx: 2,252 ac

# BRANCH II

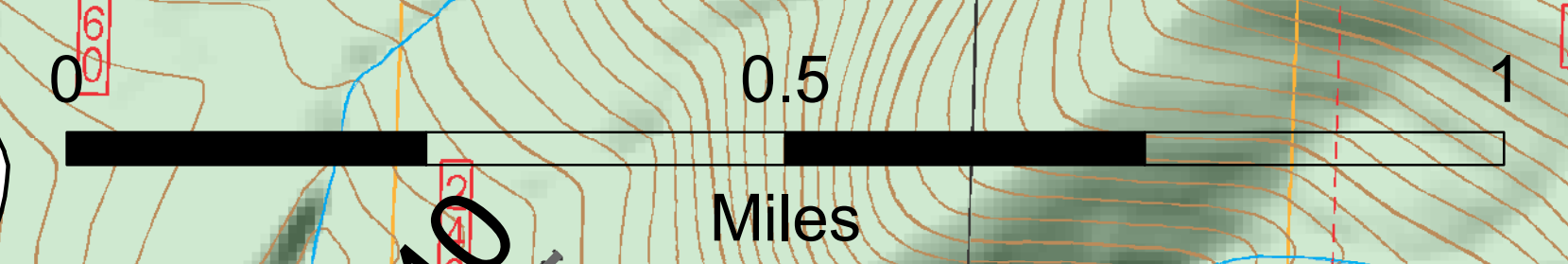
# DIV O

# DIV Z

# DIV A



S. Bushnell  
09 04 17  
2254 Hours



● Drop Point	🔴 Uncontrolled Fire Edge
⊗ Fire Origin	⊗ Completed Dozer Line
● Helispot	— Completed Line
WX Mobile Weather Unit	⊘ Hand Line
Ⓟ Pump	⊘ Road as Completed Line
Ⓢ Spot Fire	— Primary Road
Ⓜ Water Source	— Light-Duty Road
	--- Unimproved Road
	--- Closed Road
	--- Unknown Road
	🌲 Umpqua National Forest
	🌲 Willamette National Forest