

STALEY FIRE OR-WIF-170174 BRIEFING Map

Datum: North American 1983

JONES FIRE BRANCH II

09/07/2017

Day Shift

Perimeter as of: 09/05/17 @ 2112

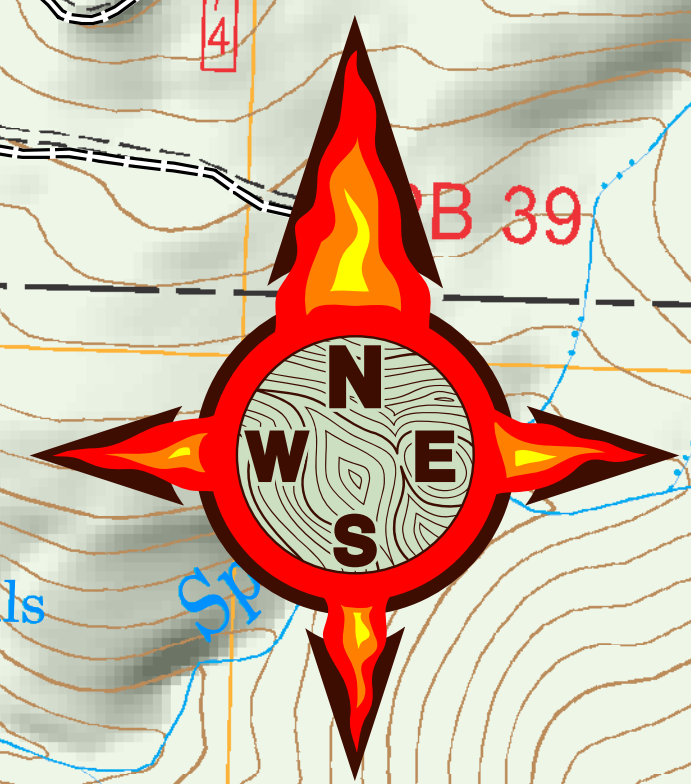
Approx: 2,300 ac

BRANCH II

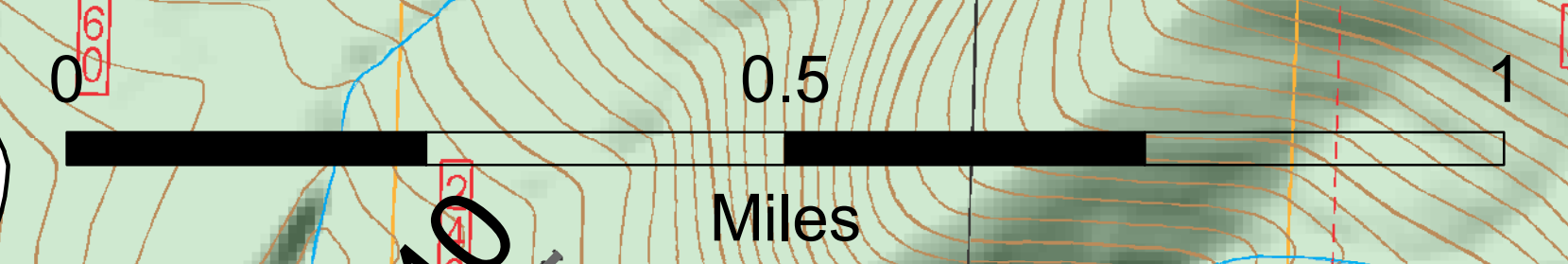
DIV O

DIV Z

DIV A



S. Bushnell
09 06 17
1926 Hours



● Drop Point	Uncontrolled Fire Edge
⊗ Fire Origin	XXXX Completed Dozer Line
● Helispot	— Completed Line
● IR Isolated Heat Source	— Hand Line
WX Mobile Weather Unit	— Road as Completed Line
⊕ Pump	— Primary Road
♂ Spot Fire	— Light-Duty Road
⊕ Water Source	— Unimproved Road
▲ Isolated Heat Sources	— Closed Road
■ Intense Heat	— Unknown Road
■ Scattered Heat	■ Umpqua National Forest
	■ Willamette National Forest

IR 20170905 @ 2112