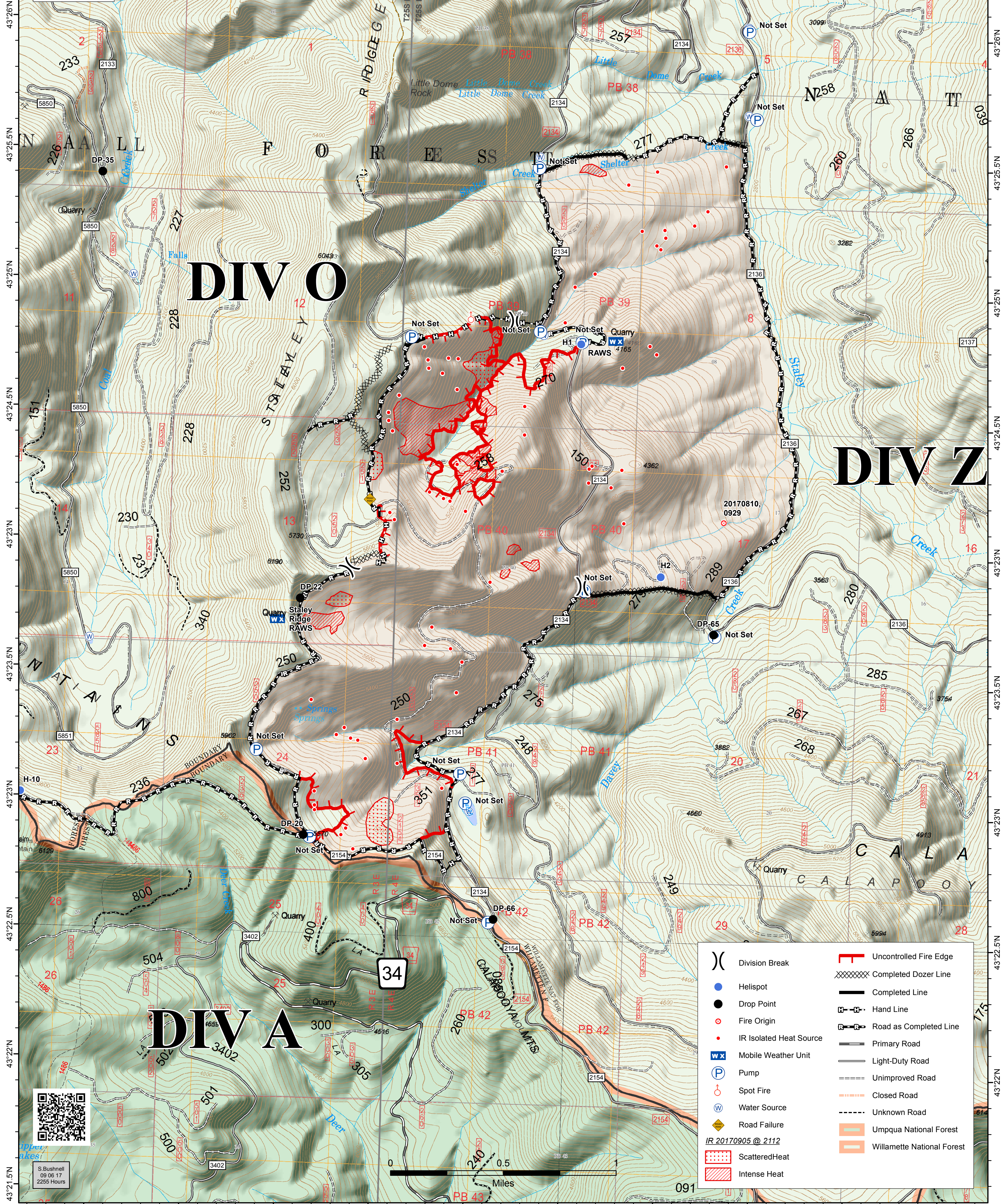
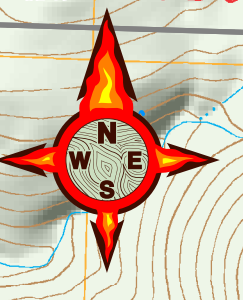


122°25.5'W 122°25'W 122°24.5'W 122°23'W 122°23.5'W 122°23'W 122°22.5'W 122°22'W 122°21.5'W 122°21'W 122°20.5'W

STALEY FIRE
JONES FIRE BRANCH II
OR-WIF-170174
OPS Map
Datum: North American 1983
09/07/2017
Day Shift
Perimeter as of: 09/05/17 @ 2112
Approx: 2,300 ac

BRANCH II



DIV O

DIV Z

DIV A

	Division Break		Uncontrolled Fire Edge
	Helispot		Completed Dozer Line
	Drop Point		Completed Line
	Fire Origin		Hand Line
	IR Isolated Heat Source		Road as Completed Line
	Mobile Weather Unit		Primary Road
	Pump		Light-Duty Road
	Spot Fire		Unimproved Road
	Water Source		Closed Road
	Road Failure		Unknown Road
	ScatteredHeat		Umpqua National Forest
	Intense Heat		Willamette National Forest

IR 20170905 @ 2112



S. Bushnell
09 06 17
2255 Hours

122°25'W 122°24.5'W 122°23'W 122°23.5'W 122°23'W 122°22.5'W 122°22'W 122°21.5'W 122°21'W 122°20.5'W