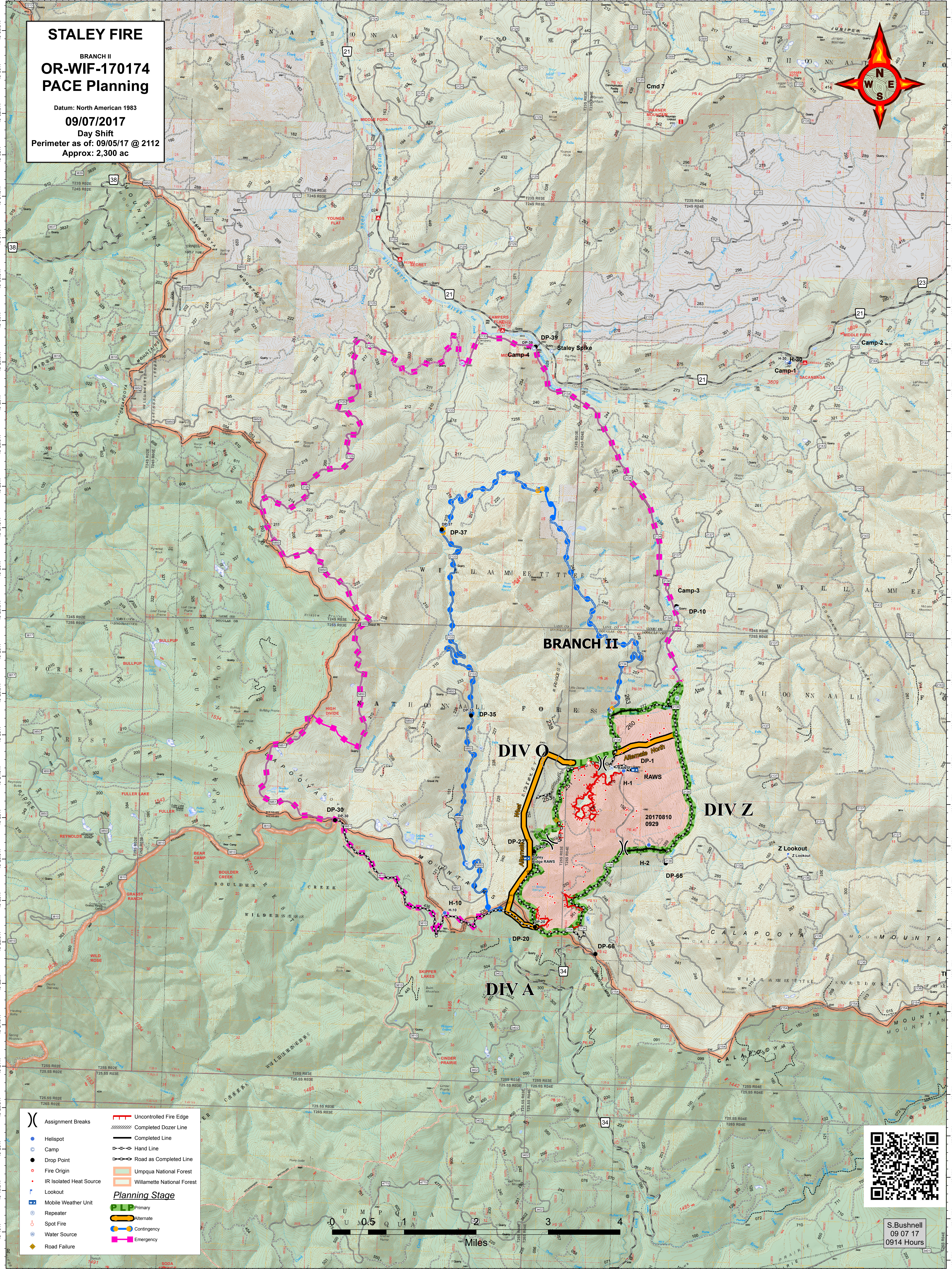
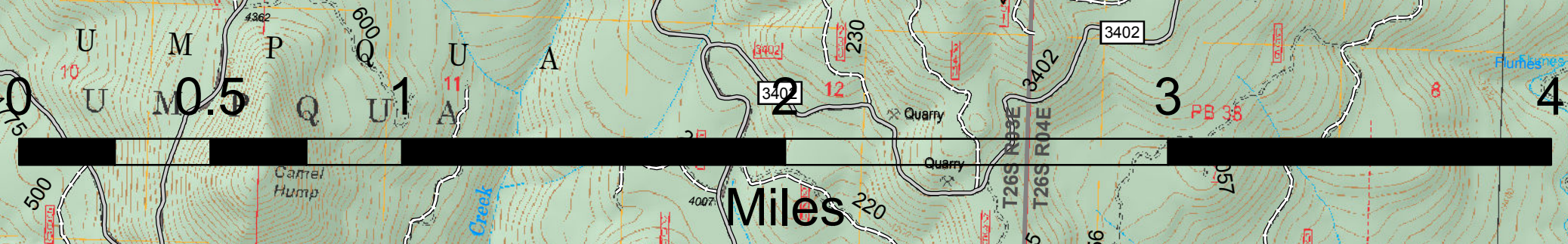


**STALEY FIRE**  
 BRANCH II  
**OR-WIF-170174**  
**PACE Planning**

Datum: North American 1983  
**09/07/2017**  
 Day Shift  
 Perimeter as of: 09/05/17 @ 2112  
 Approx: 2,300 ac



- |                           |                            |
|---------------------------|----------------------------|
| (X) Assignment Breaks     | Uncontrolled Fire Edge     |
| ● Helispot                | Completed Dozer Line       |
| ● Camp                    | Completed Line             |
| ● Drop Point              | Hand Line                  |
| ● Fire Origin             | Road as Completed Line     |
| ● IR Isolated Heat Source | Umpqua National Forest     |
| ● Lookout                 | Willamette National Forest |
| ● Mobile Weather Unit     | <b>Planning Stage</b>      |
| ● Repeater                | Primary                    |
| ● Spot Fire               | Alternate                  |
| ● Water Source            | Contingency                |
| ● Road Failure            | Emergency                  |



S. Bushnell  
 09 07 17  
 0914 Hours