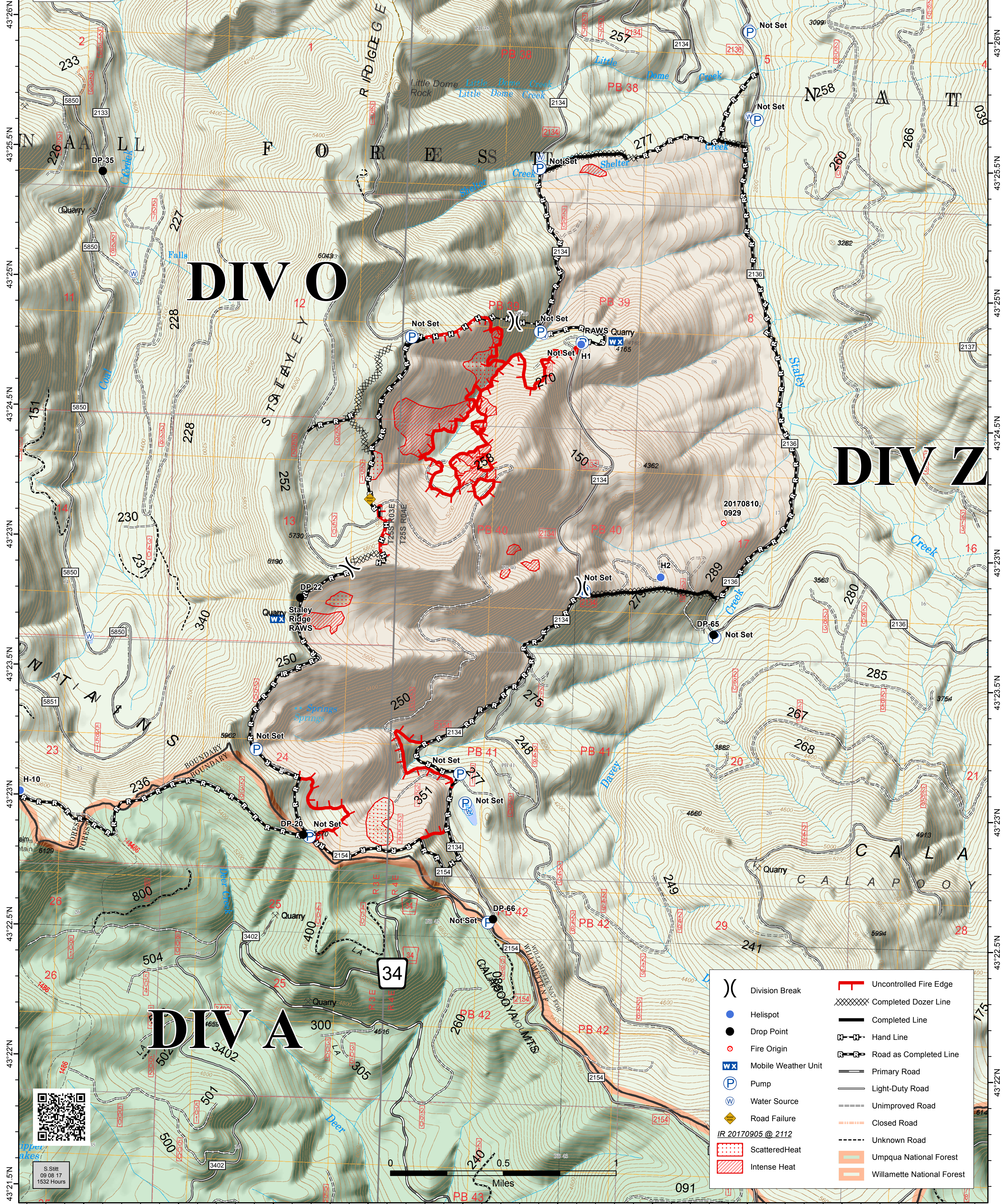


122°25.5'W 122°25'W 122°24.5'W 122°23'W 122°23.5'W 122°23'W 122°22.5'W 122°22'W 122°21.5'W 122°21'W 122°20.5'W

**STALEY FIRE**  
JONES FIRE BRANCH II  
OR-WIF-170174  
OPS Map  
Datum: North American 1983  
09/09/2017  
Day Shift  
Perimeter as of: 09/05/17 @ 2112  
Approx: 2,300 ac

# BRANCH II



## DIV O

## DIV Z

## DIV A

- Division Break
- Helispot
- Drop Point
- Fire Origin
- Mobile Weather Unit
- Pump
- Water Source
- Road Failure
- ScatteredHeat
- Intense Heat
- Uncontrolled Fire Edge
- Completed Dozer Line
- Completed Line
- Hand Line
- Road as Completed Line
- Primary Road
- Light-Duty Road
- Unimproved Road
- Closed Road
- Unknown Road
- Umpqua National Forest
- Willamette National Forest



S. Stitt  
09 08 17  
1532 Hours

122°25'W 122°24.5'W 122°23'W 122°23.5'W 122°23'W 122°22.5'W 122°22'W 122°21.5'W 122°21'W 122°20.5'W