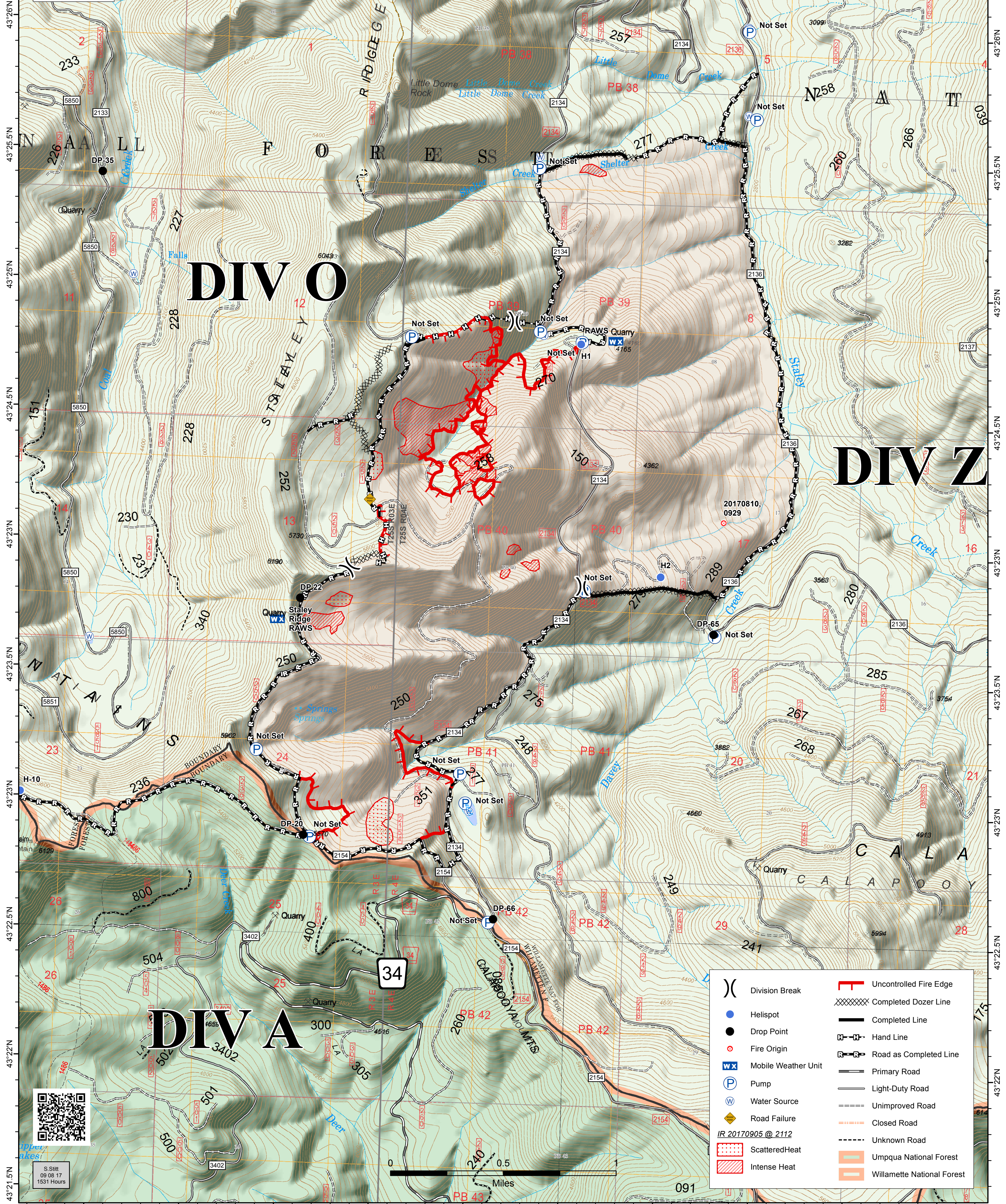


122°25.5'W 122°25'W 122°24.5'W 122°23'W 122°23.5'W 122°23'W 122°22.5'W 122°22'W 122°21.5'W 122°21'W 122°20.5'W

STALEY FIRE
JONES FIRE BRANCH II
OR-WIF-170174
OPS Map
Datum: North American 1983
09/09/2017
Day Shift
Perimeter as of: 09/05/17 @ 2112
Approx: 2,300 ac

BRANCH II



DIV O

DIV Z

DIV A

- () Division Break
- Helispot
- Drop Point
- Fire Origin
- WX Mobile Weather Unit
- P Pump
- W Water Source
- ◆ Road Failure
- ScatteredHeat
- Intense Heat
- Uncontrolled Fire Edge
- Completed Dozer Line
- Completed Line
- Hand Line
- Road as Completed Line
- Primary Road
- Light-Duty Road
- Unimproved Road
- Closed Road
- Unknown Road
- Umpqua National Forest
- Willamette National Forest



S. Stitt
09 08 17
1531 Hours

122°25'W 122°24.5'W 122°23'W 122°23.5'W 122°23'W 122°22.5'W 122°22'W 122°21.5'W 122°21'W 122°20.5'W