

122°25'0"W 122°24'30"W 122°24'0"W 122°23'30"W 122°23'0"W 122°22'30"W 122°22'0"W 122°21'30"W

**STALEY FIRE**  
**OR-WIF-170174**  
**INFRARED INTERPRETATION**  
Date of Imagery: 08/27/2017 00:56 PDT  
Heat Perimeter: 1,418 Acres  
NAD83 R6 Albers



43° 26.378' N  
122° 22.342' W

43° 25.431' N  
122° 23.377' W

43° 25.002' N  
122° 23.559' W

43° 24.947' N  
122° 22.932' W

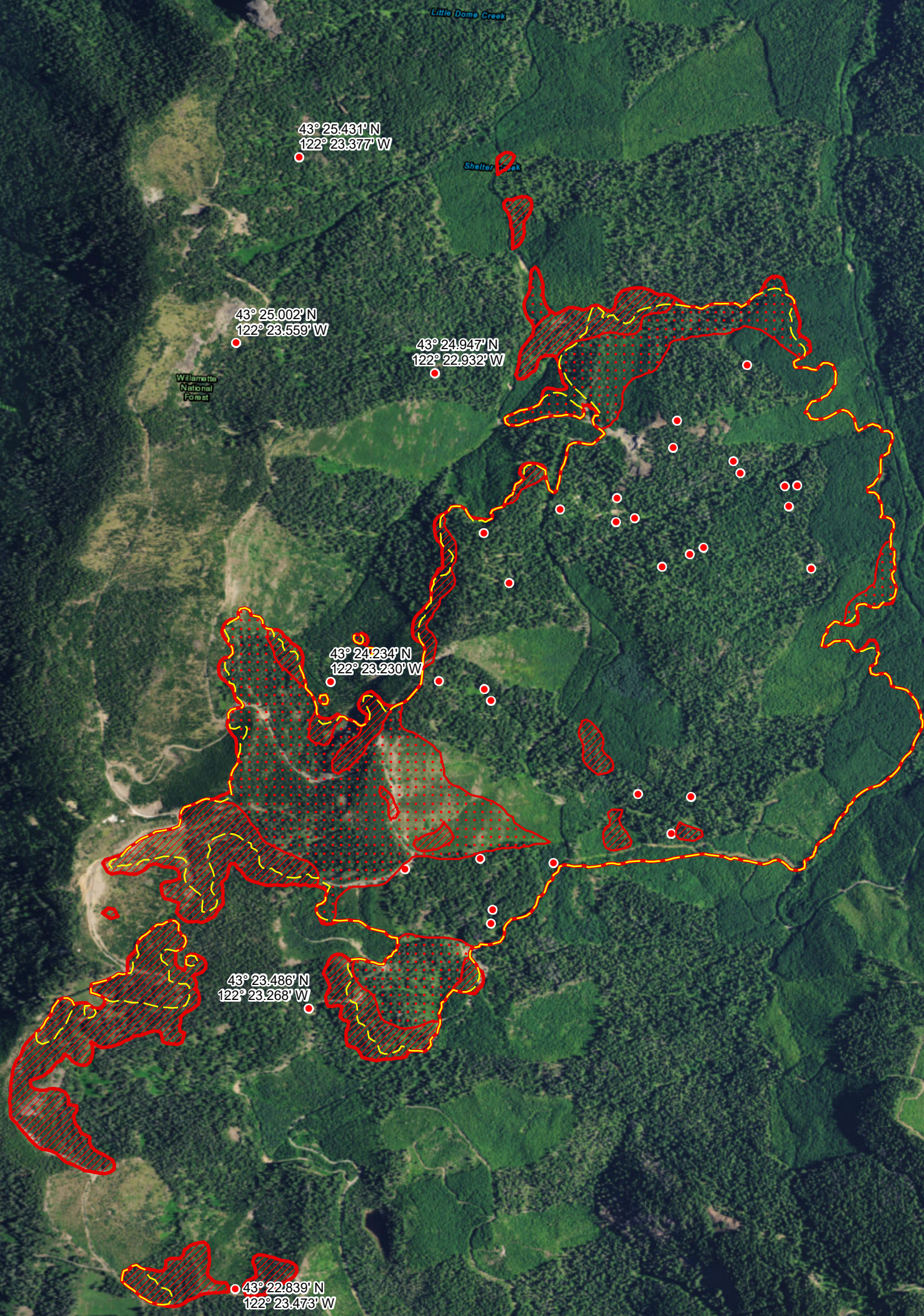
43° 24.234' N  
122° 23.230' W

43° 23.486' N  
122° 23.268' W

43° 22.839' N  
122° 23.473' W

43°26'0"N  
43°25'30"N  
43°25'0"N  
43°24'30"N  
43°24'0"N  
43°23'30"N  
43°23'0"N  
43°22'30"N

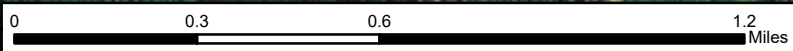
43°26'30"N  
43°26'0"N  
43°25'30"N  
43°25'0"N  
43°24'30"N  
43°24'0"N  
43°23'30"N  
43°23'0"N  
43°22'30"N



**Infrared Legend**

- Heat Perimeter
- Intense Heat
- Scattered Heat
- Isolated Heat Sources
- Previous Perimeter

IRIN: Kurt Teuber, South Lake Tahoe, CA



Source: Esri, DigitalGlobe, GeoEye, Earthstar Geographics, CNES/Airbus DS, USDA, USGS, AeroGRID, IGN, and the GIS User Community

122°24'30"W 122°24'0"W 122°23'30"W 122°23'0"W 122°22'30"W 122°22'0"W 122°21'30"W