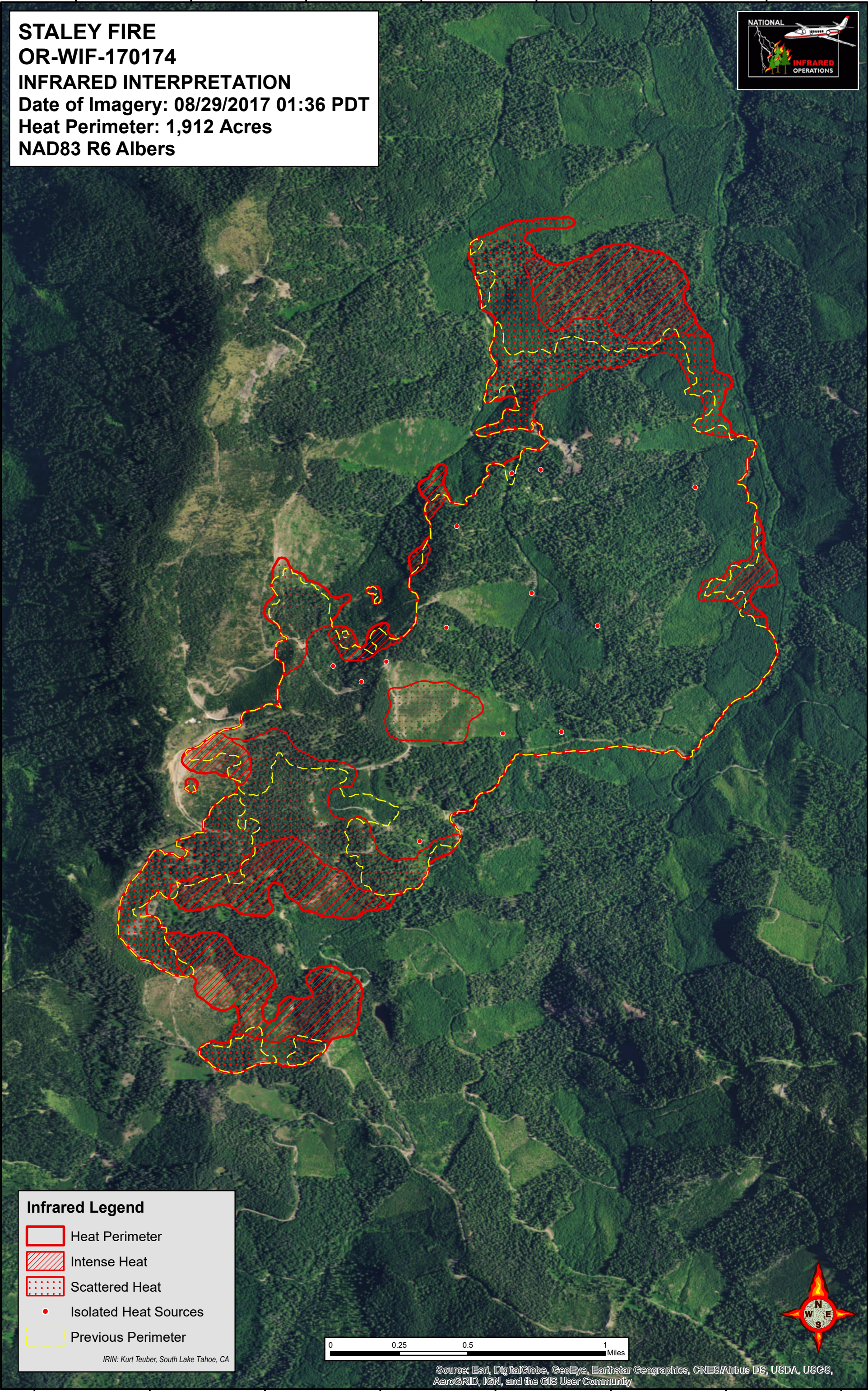


122°24'30"W 122°24'0"W 122°23'30"W 122°23'0"W 122°22'30"W 122°22'0"W 122°21'30"W






43°26'0"N
43°25'30"N
43°25'0"N
43°24'30"N
43°24'0"N
43°23'30"N
43°23'0"N
43°22'30"N
43°22'0"N

43°26'0"N
43°25'30"N
43°25'0"N
43°24'30"N
43°24'0"N
43°23'30"N
43°23'0"N
43°22'30"N
43°22'0"N

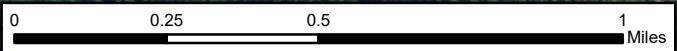
STALEY FIRE
OR-WIF-170174
INFRARED INTERPRETATION
Date of Imagery: 08/29/2017 01:36 PDT
Heat Perimeter: 1,912 Acres
NAD83 R6 Albers



Infrared Legend

-  Heat Perimeter
-  Intense Heat
-  Scattered Heat
-  Isolated Heat Sources
-  Previous Perimeter

IRIN: Kurt Teuber, South Lake Tahoe, CA



Source: Esri, DigitalGlobe, GeoEye, Earthstar Geographics, CNES/Airbus DS, USDA, USGS, AeroGRID, IGN, and the GIS User Community

122°24'30"W 122°24'0"W 122°23'30"W 122°23'0"W 122°22'30"W 122°22'0"W 122°21'30"W 122°21'0"W