

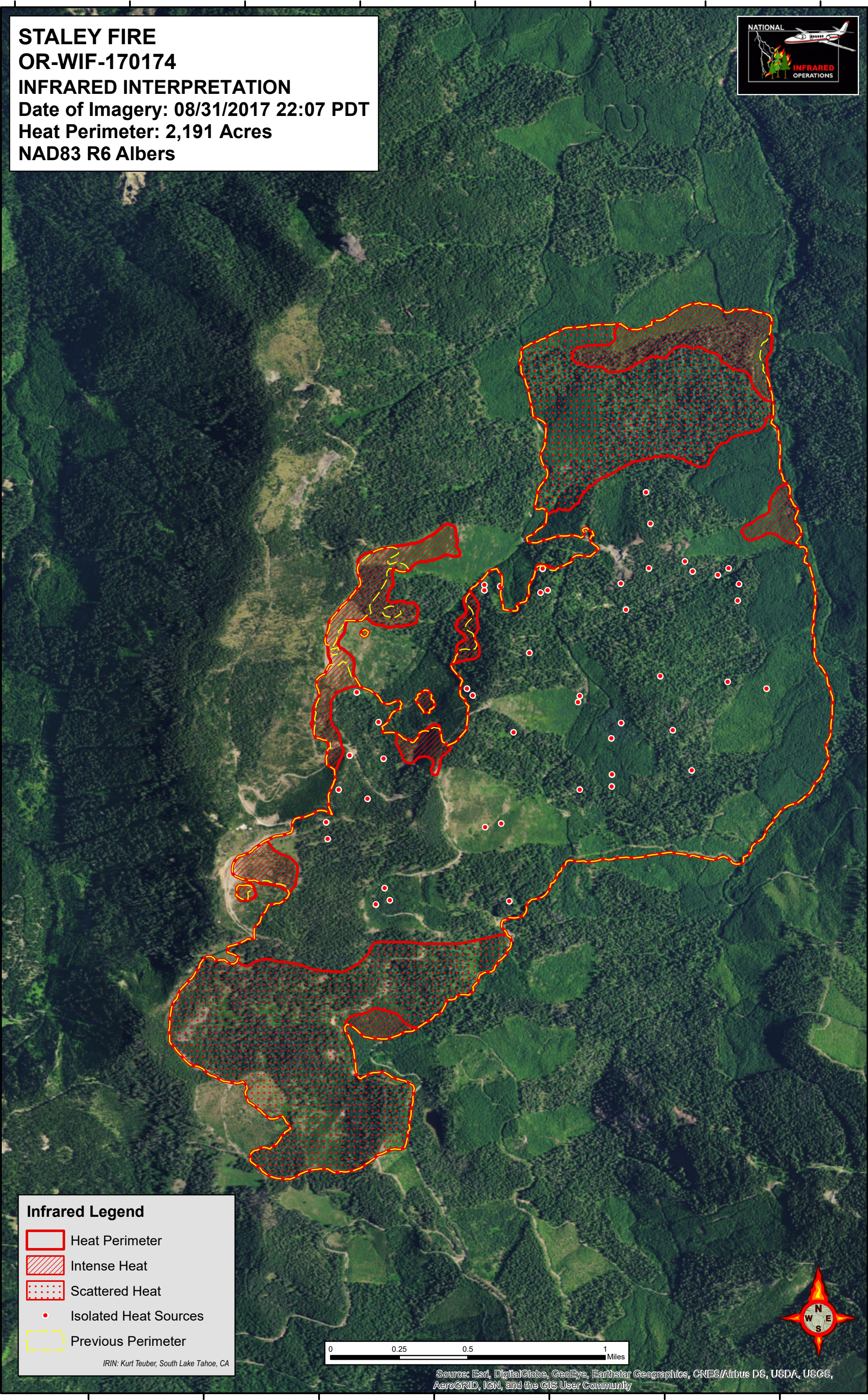
122°25'0"W 122°24'30"W 122°24'0"W 122°23'30"W 122°23'0"W 122°22'30"W 122°22'0"W 122°21'30"W

STALEY FIRE
OR-WIF-170174
INFRARED INTERPRETATION
Date of Imagery: 08/31/2017 22:07 PDT
Heat Perimeter: 2,191 Acres
NAD83 R6 Albers



43°26'0"N
43°25'30"N
43°25'0"N
43°24'30"N
43°24'0"N
43°23'30"N
43°23'0"N
43°22'30"N

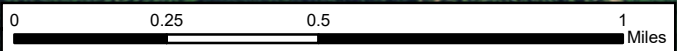
43°26'30"N
43°26'0"N
43°25'30"N
43°25'0"N
43°24'30"N
43°24'0"N
43°23'30"N
43°23'0"N
43°22'30"N



Infrared Legend

- Heat Perimeter
- Intense Heat
- Scattered Heat
- Isolated Heat Sources
- Previous Perimeter

IRIN: Kurt Teuber, South Lake Tahoe, CA



Source: Esri, DigitalGlobe, GeoEye, Earthstar Geographics, CNES/Airbus DS, USDA, USGS, AeroGRID, IGN, and the GIS User Community

122°24'30"W 122°24'0"W 122°23'30"W 122°23'0"W 122°22'30"W 122°22'0"W 122°21'30"W