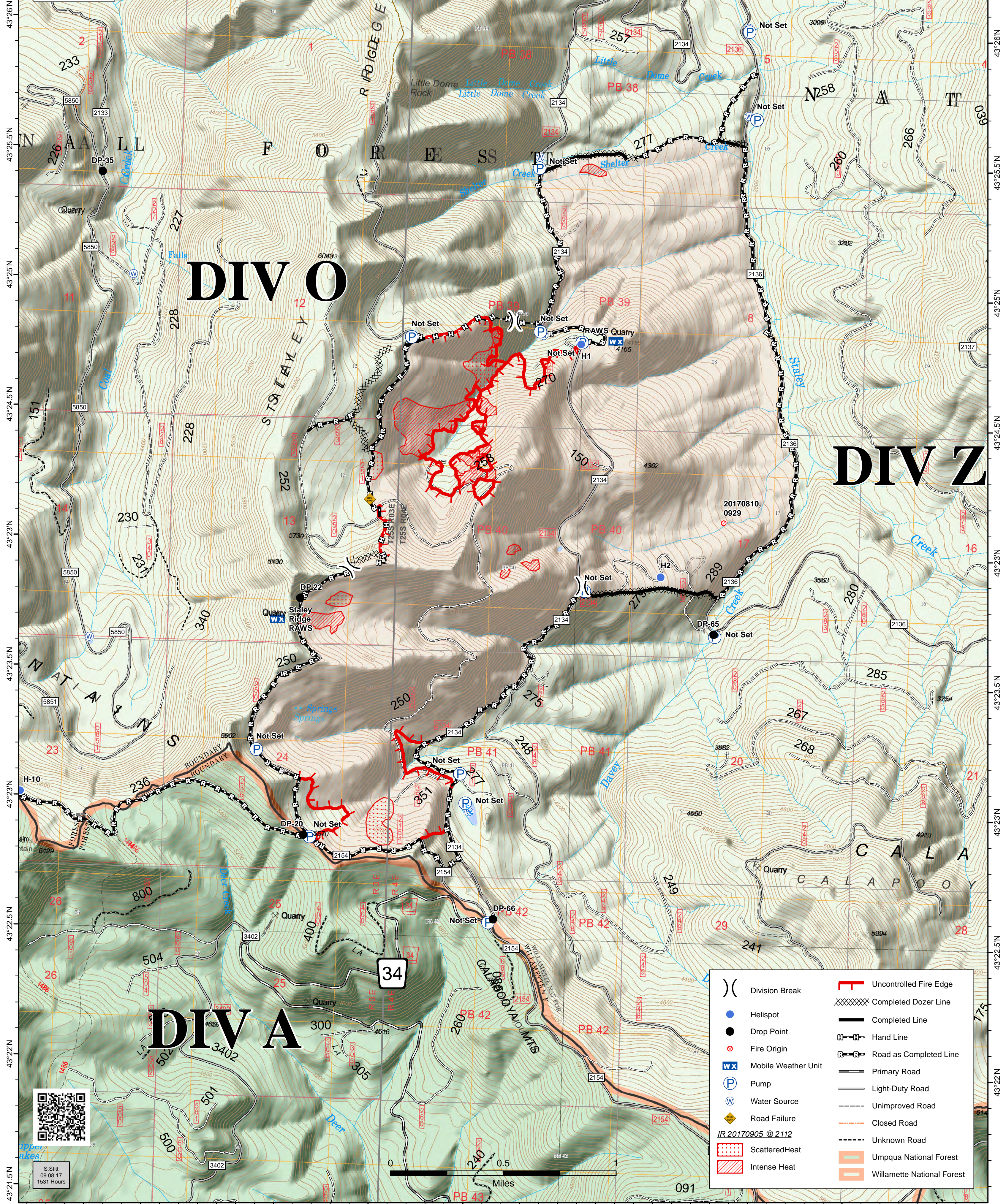


122°25.5'W 122°25'W 122°24.5'W 122°23'W 122°23.5'W 122°23'W 122°22.5'W 122°22'W 122°21.5'W 122°21'W 122°20.5'W

STALEY FIRE
JONES FIRE BRANCH II
OR-WIF-170174
Ops Map
Datum: North American 1983
09/09/2017
Day Shift
Perimeter as of: 09/05/17 @ 2112
Approx: 2,300 ac

BRANCH II



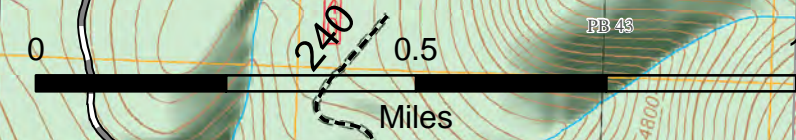
DIV O

DIV Z

DIV A

	Division Break		Uncontrolled Fire Edge
	Helispot		Completed Dozer Line
	Drop Point		Completed Line
	Fire Origin		Hand Line
	Mobile Weather Unit		Road as Completed Line
	Pump		Primary Road
	Water Source		Light-Duty Road
	Road Failure		Unimproved Road
	ScatteredHeat		Closed Road
	Intense Heat		Unknown Road
			Umpqua National Forest
			Willamette National Forest

IR 20170905 @ 2112



S. Silt
09 08 17
1531 Hours

122°25'W 122°24.5'W 122°23'W 122°23.5'W 122°23'W 122°22.5'W 122°22'W 122°21.5'W 122°21'W 122°20.5'W