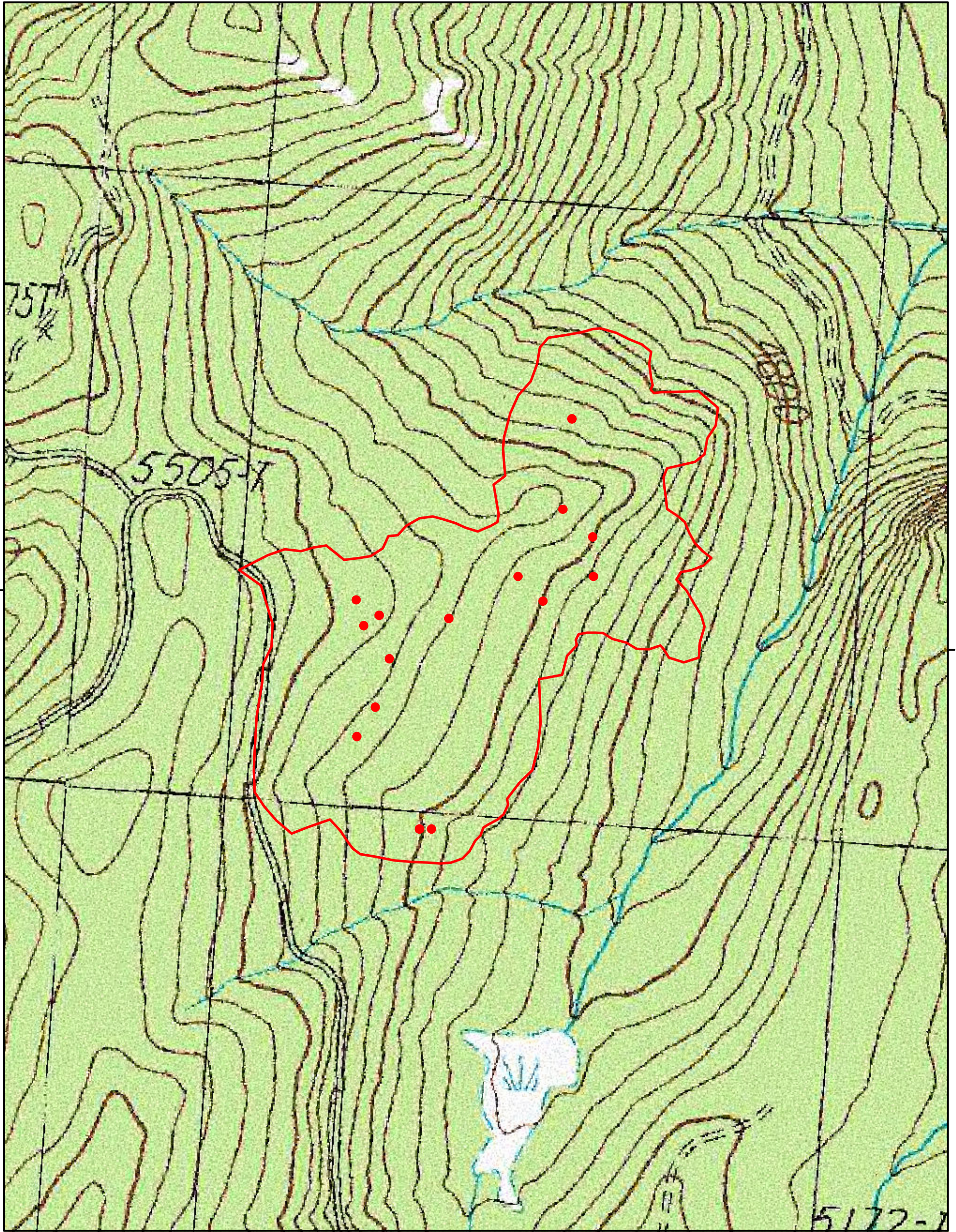


Tumblebug #2
OR-WIF-170228
IR Map
Flown: August 27, 2017 0101 hrs PDT

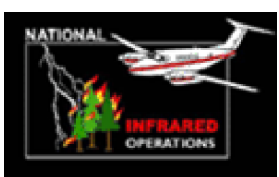


43°24'0"N

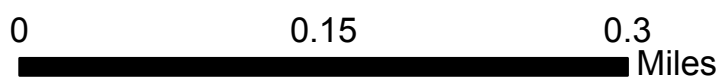
43°24'0"N

122°14'0"W

Est. Size: 87 acres (heat perimeter)



1 : 6 000



N



Legend

- Isolated Heat Sources
- ▭ Heat Perimeter