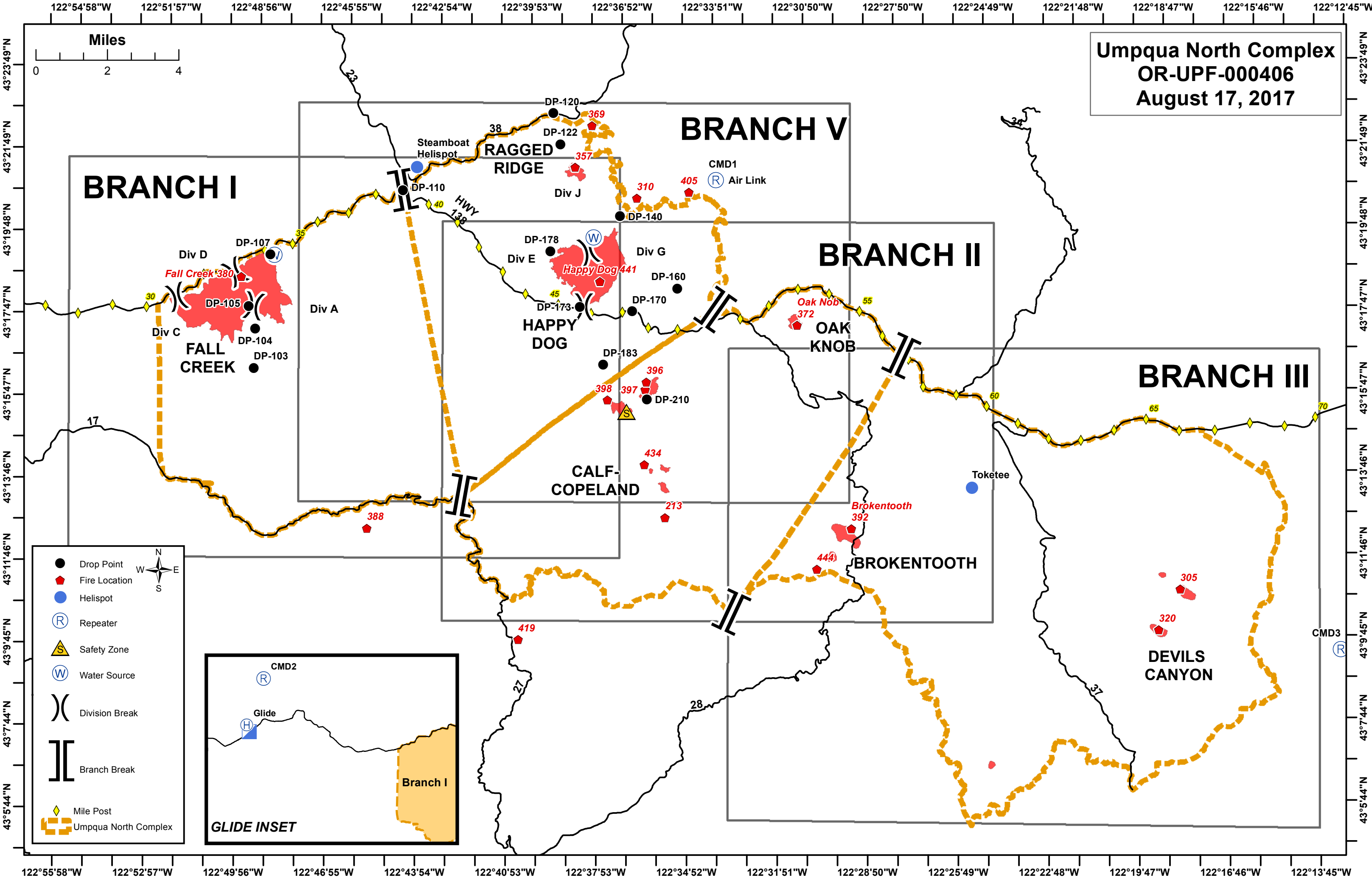
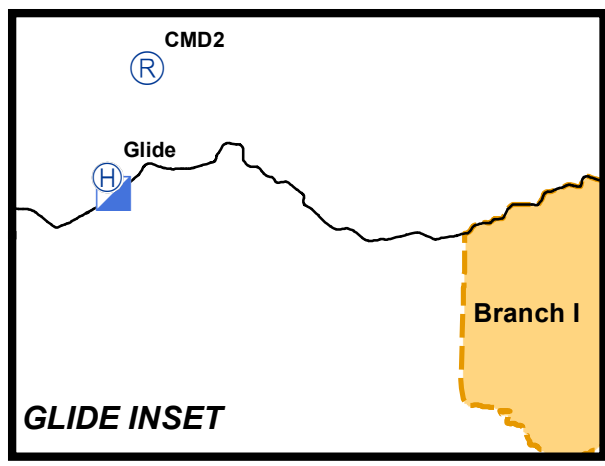


Umpqua North Complex
OR-UPF-000406
August 17, 2017



Legend

- Drop Point
- ▮ Fire Location
- Helispot
- Ⓡ Repeater
- ⚠ Safety Zone
- Ⓜ Water Source
-) Division Break
- || Branch Break
- ◆ Mile Post
- ▭ Umpqua North Complex



122°55'58"W 122°52'57"W 122°49'56"W 122°46'55"W 122°43'54"W 122°40'53"W 122°37'53"W 122°34'52"W 122°31'51"W 122°28'50"W 122°25'49"W 122°22'48"W 122°19'47"W 122°16'46"W 122°13'45"W

43°23'49"N 43°21'49"N 43°19'48"N 43°17'47"N 43°15'47"N 43°13'46"N 43°11'46"N 43°09'45"N 43°07'44"N 43°5'44"N

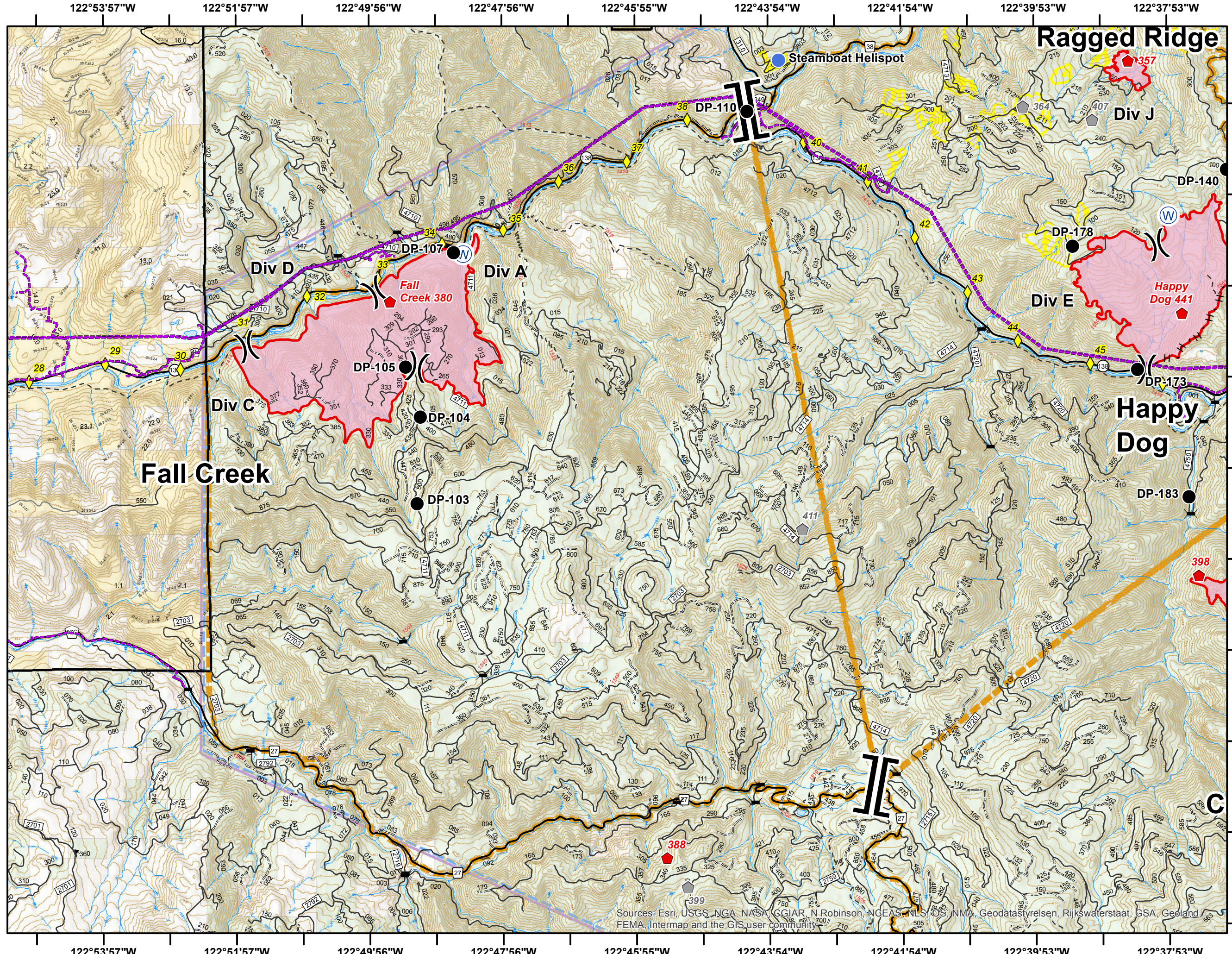
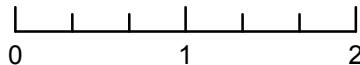
122°54'58"W 122°51'57"W 122°48'56"W 122°45'55"W 122°42'54"W 122°39'53"W 122°36'52"W 122°33'51"W 122°30'50"W 122°27'50"W 122°24'49"W 122°21'48"W 122°18'47"W 122°15'46"W 122°12'45"W

**Umpqua North
Complex
OR-UPF-000406
8/17/2017
BRANCH I**

- Drop Point
- ◆ Fire Location
- Helispot
- Ⓜ Water Source
- ◆ Fire Location - Smoke Check
- ⎓ Division Break
- ⎓ Branch Break
- ⎓ Bridges
- ◆ Mile Post
- Forest or Grassland
- Powerline
- Bureau of Land Management
- Private
- United States Forest Service
- Umpqua North Complex
- National Forest Boundary



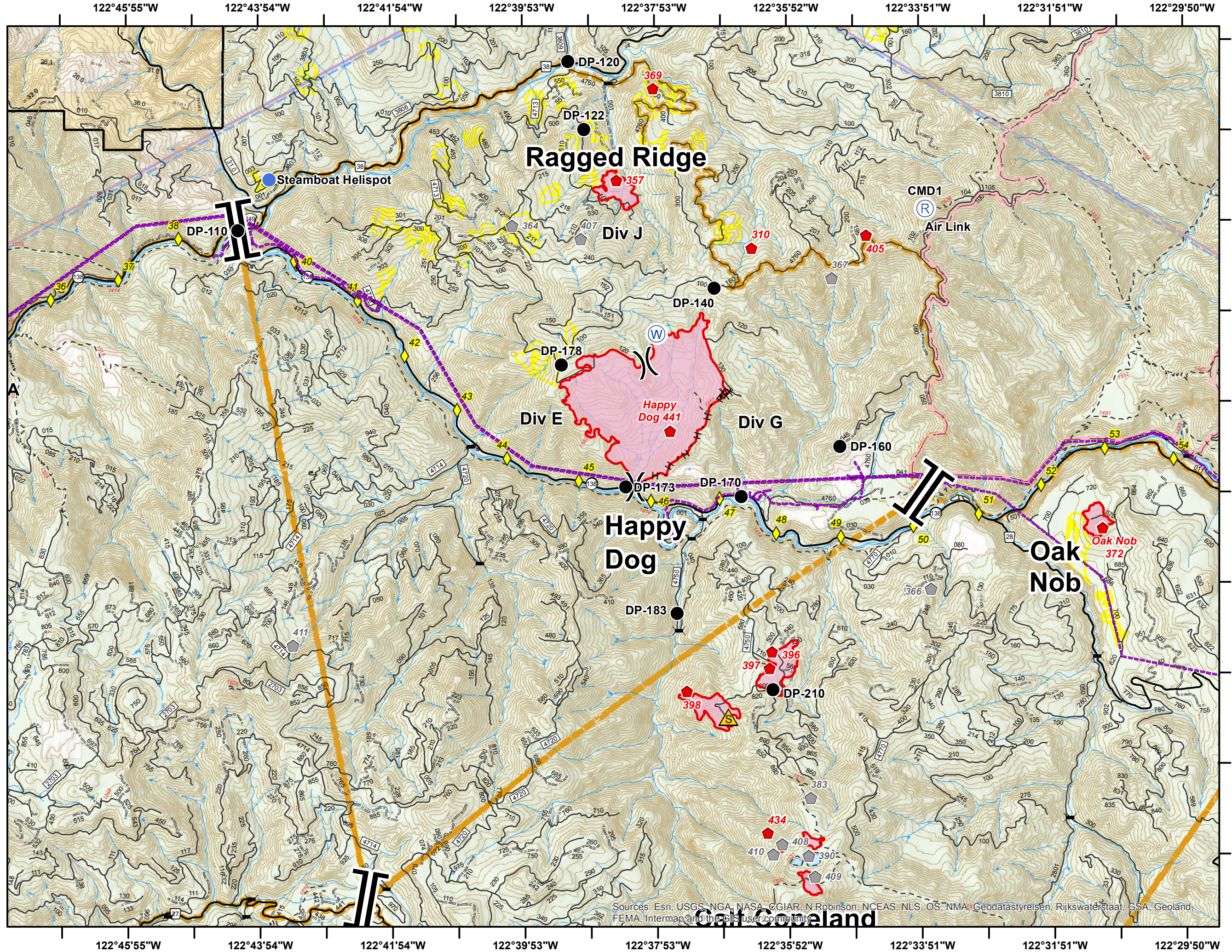
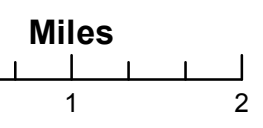
Miles



Sources: Esri, USGS, NGA, NASA, GGIAR, N Robinson, NGEAS, NLS, GSA, NMA, Geodatastyrelsen, Rijkswaterstaat, GSA, Geoland, FEMA, Intermap and the GIS user community

**Umpqua North
Complex
OR-UPF-000406
8/17/2017
BRANCH V**

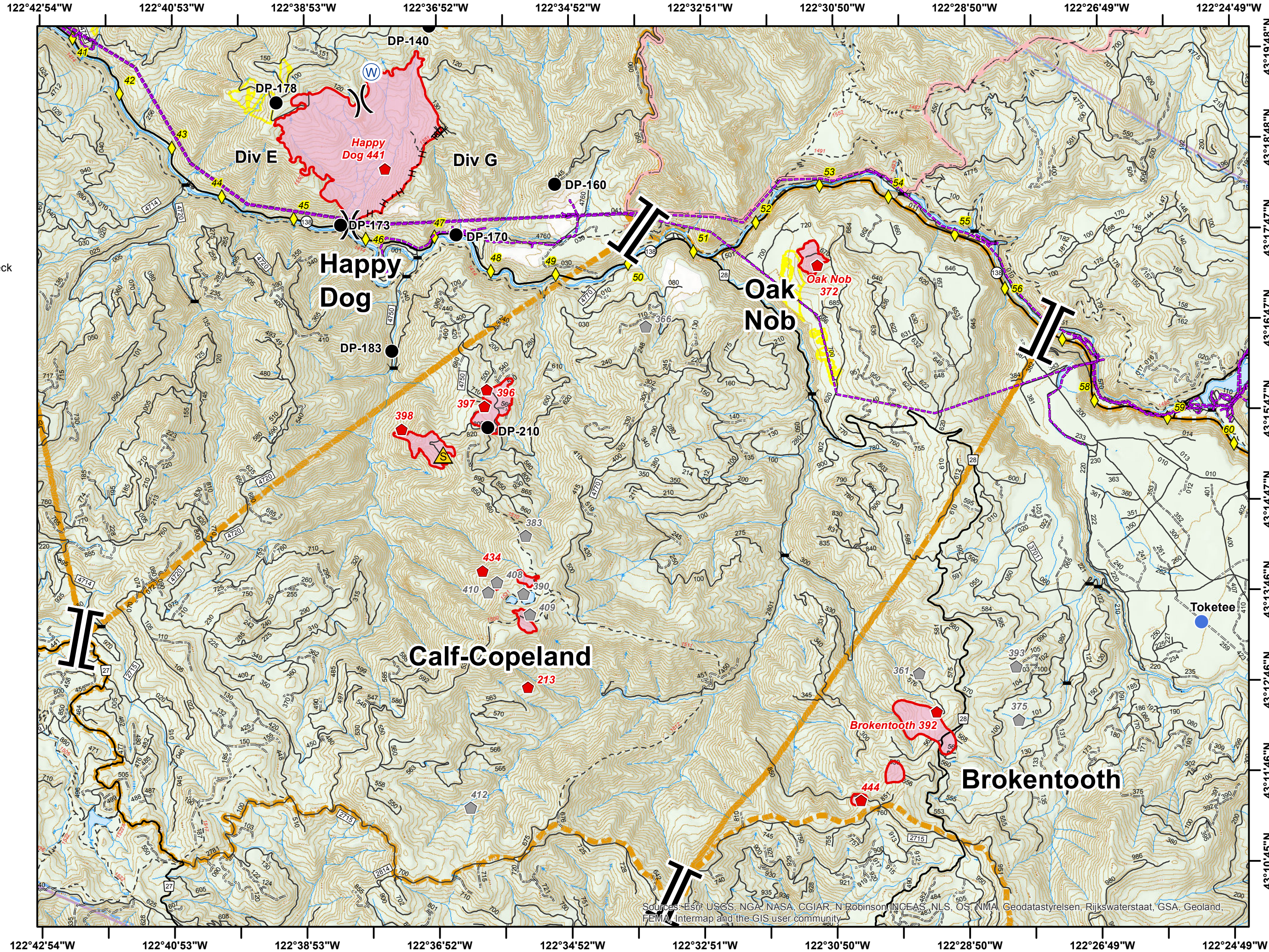
- Drop Point
- ◆ Fire Location
- Helispot
- Ⓡ Repeater
- ⚠ Safety Zone
- Ⓜ Water Source
- ⬢ Fire Location - Smoke Check
- ⎓ Division Break
- ⎓ Branch Break
- ⚶ Bridges
- ◆ Mile Post
- Forest or Grassland
- National Wilderness Area
- Powerline
- Bureau of Land Management
- Private
- United States Forest Service
- Umpqua North Complex
- National Forest Boundary



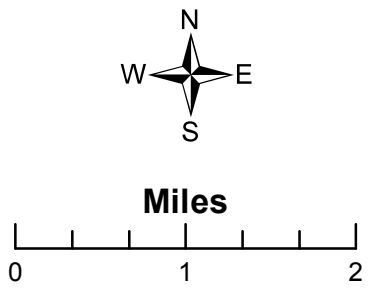
Sources: Esri, USGS, NGA, NASA, GGIAR, N. Robinson, NCEAS, NLS, OS, NMA, Geodatastyrelsen, Rijkswaterstaat, GSA, Geoland, FEMA, Intermap and the GIS User Community

**Umpqua North
Complex
OR-UPF-000406
8/17/2017
BRANCH II**

- Drop Point
- Fire Location
- Helispot
- Safety Zone
- Water Source
- Fire Location - Smoke Check
-) Division Break
- | Branch Break
- Bridges
- Mile Post
- National Wilderness Area
- Powerline
- Private
- United States Forest Service
- Umpqua North Complex
- National Forest Boundary

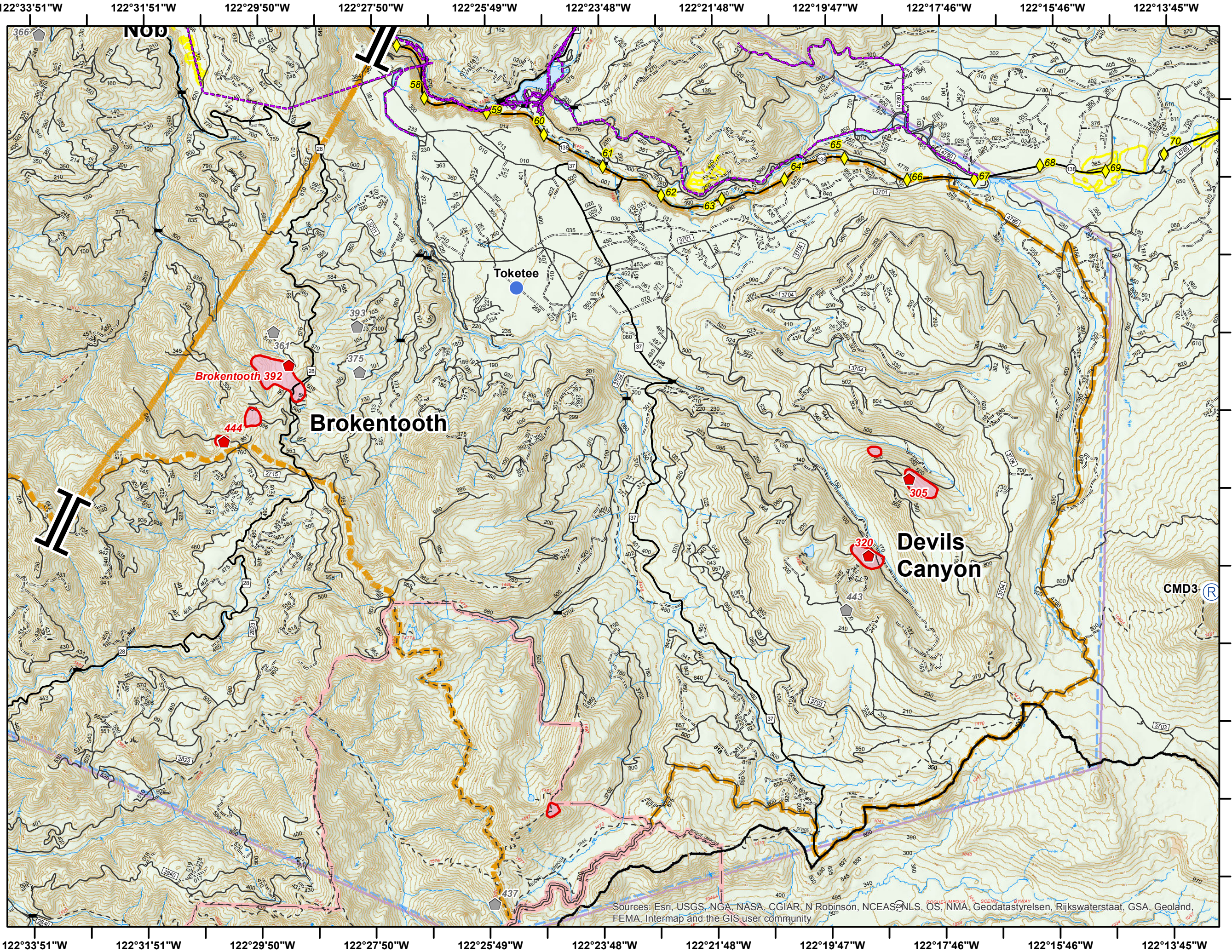


Sources: Esri, USGS, NGA, NASA, CGIAR, N Robinson, INCEAS, NLS, OS, NMA, Geodatasryelsen, Rijkswaterstaat, GSA, Geoland, FEMA, Intermap and the GIS user community



**Umpqua North
Complex
OR-UPF-000406
8/17/2017
BRANCH III**

- ◆ Fire Location
- Helispot
- R Repeater
- ◆ Fire Location - Smoke Check
- || Branch Break
- ✂ Bridges
- ◆ Mile Post
- Forest or Grassland
- National Wilderness Area
- - - Powerline
- United States Forest Service
- Umpqua North Complex
- National Forest Boundary



Sources: Esri, USGS, NGA, NASA, CGIAR, N Robinson, NCEAS, NLS, OS, NMA, Geodastystyrelsen, Rijkswaterstaat, GSA, Geoland, FEMA, Intermap and the GIS user community