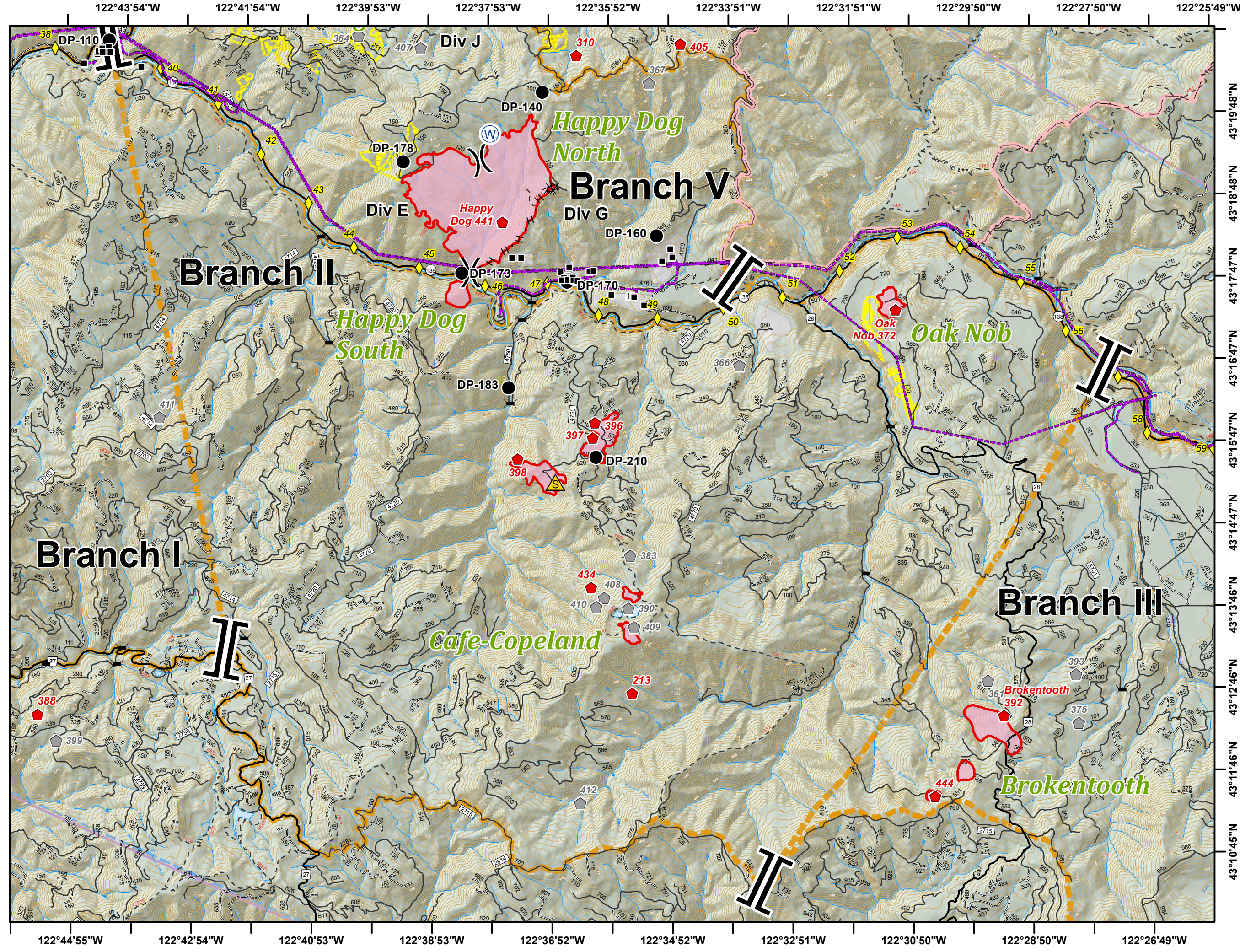
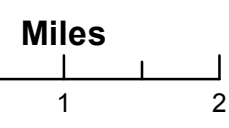


**Umpqua North  
Complex  
OR-UPF-000406  
8/18/2017  
BRANCH II**

- Structure
- Drop Point
- ◆ Fire Location
- Ⓡ Repeater
- ⚠ Safety Zone
- Ⓜ Water Source
- ⬢ Fire Location - Smoke Check
- ) Division Break
- || Branch Break
- ⚡ Bridges
- ◆ Mile Post
- Uncontrolled Fire Edge
- XXXX Completed Dozer Line
- H · H Completed Hand Line
- National Wilderness Area
- Powerline
- Private
- United States Forest Service
- Umpqua North Complex
- National Forest Boundary



122°43'54"W 122°41'54"W 122°39'53"W 122°37'53"W 122°35'52"W 122°33'51"W 122°31'51"W 122°29'50"W 122°27'50"W 122°25'49"W

43°19'48"N 43°18'48"N 43°17'47"N 43°16'47"N 43°15'47"N 43°14'47"N 43°13'46"N 43°12'46"N 43°11'46"N 43°10'45"N

122°44'55"W 122°42'54"W 122°40'53"W 122°38'53"W 122°36'52"W 122°34'52"W 122°32'51"W 122°30'50"W 122°28'50"W 122°26'49"W