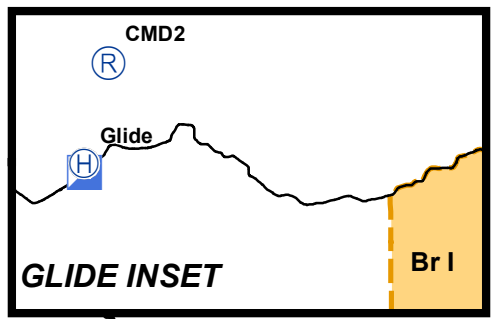
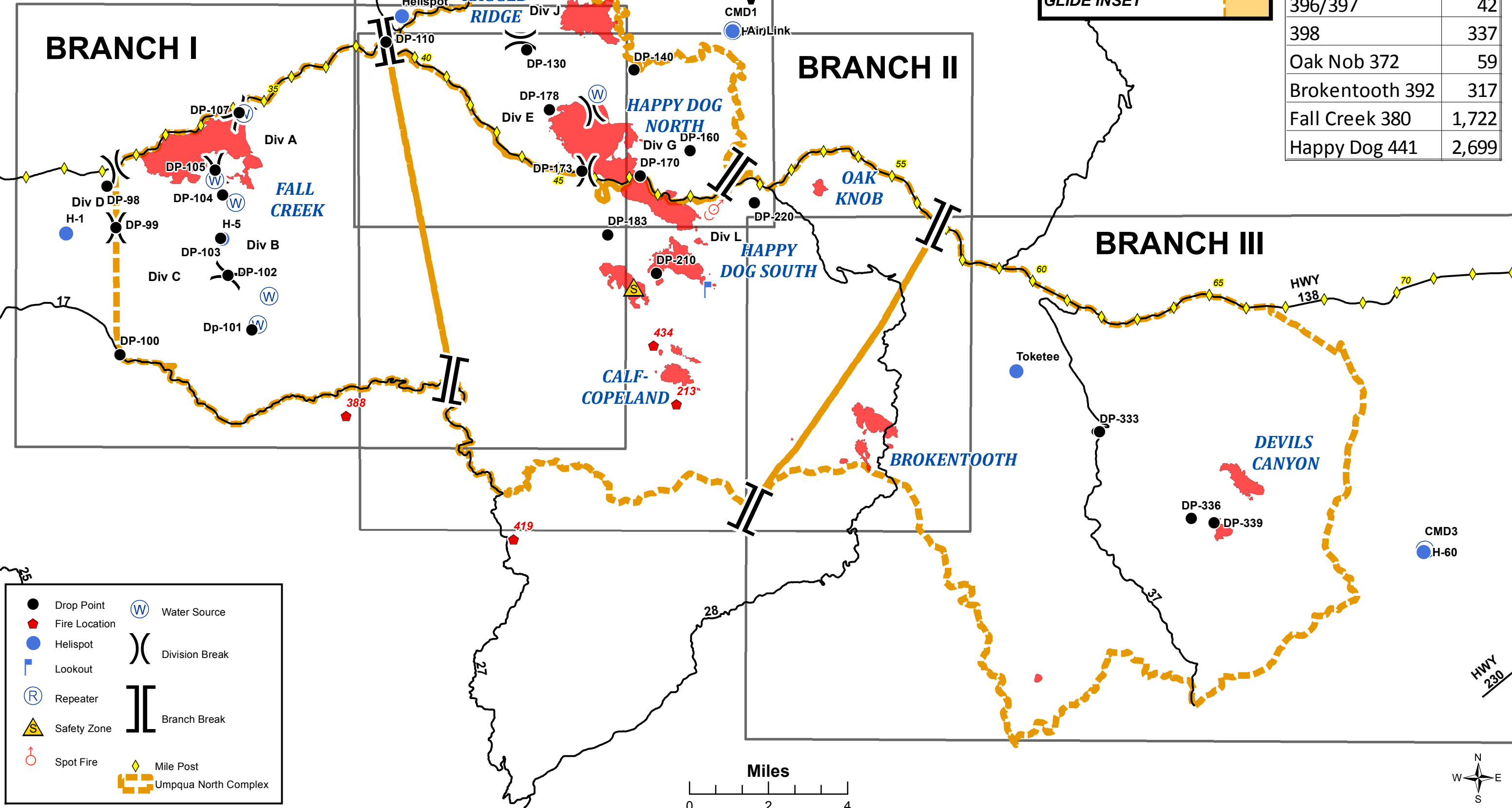


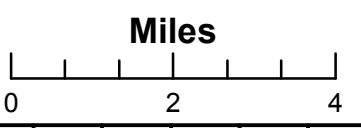
**Umpqua North Complex**  
**OR-UPF-000406**  
**August 20, 2017**  
**6,878 Total Acres**



| Fire Name       | Acres |
|-----------------|-------|
| 305             | 242   |
| 320             | 83    |
| 357             | 588   |
| 396/397         | 42    |
| 398             | 337   |
| Oak Nob 372     | 59    |
| Brokentooth 392 | 317   |
| Fall Creek 380  | 1,722 |
| Happy Dog 441   | 2,699 |



- Drop Point
- ◆ Fire Location
- Helispot
- Lookout
- Ⓡ Repeater
- ⚠ Safety Zone
- ♂ Spot Fire
- Ⓜ Water Source
- ) Division Break
- || Branch Break
- ◆ Mile Post
- ▬ Umpqua North Complex



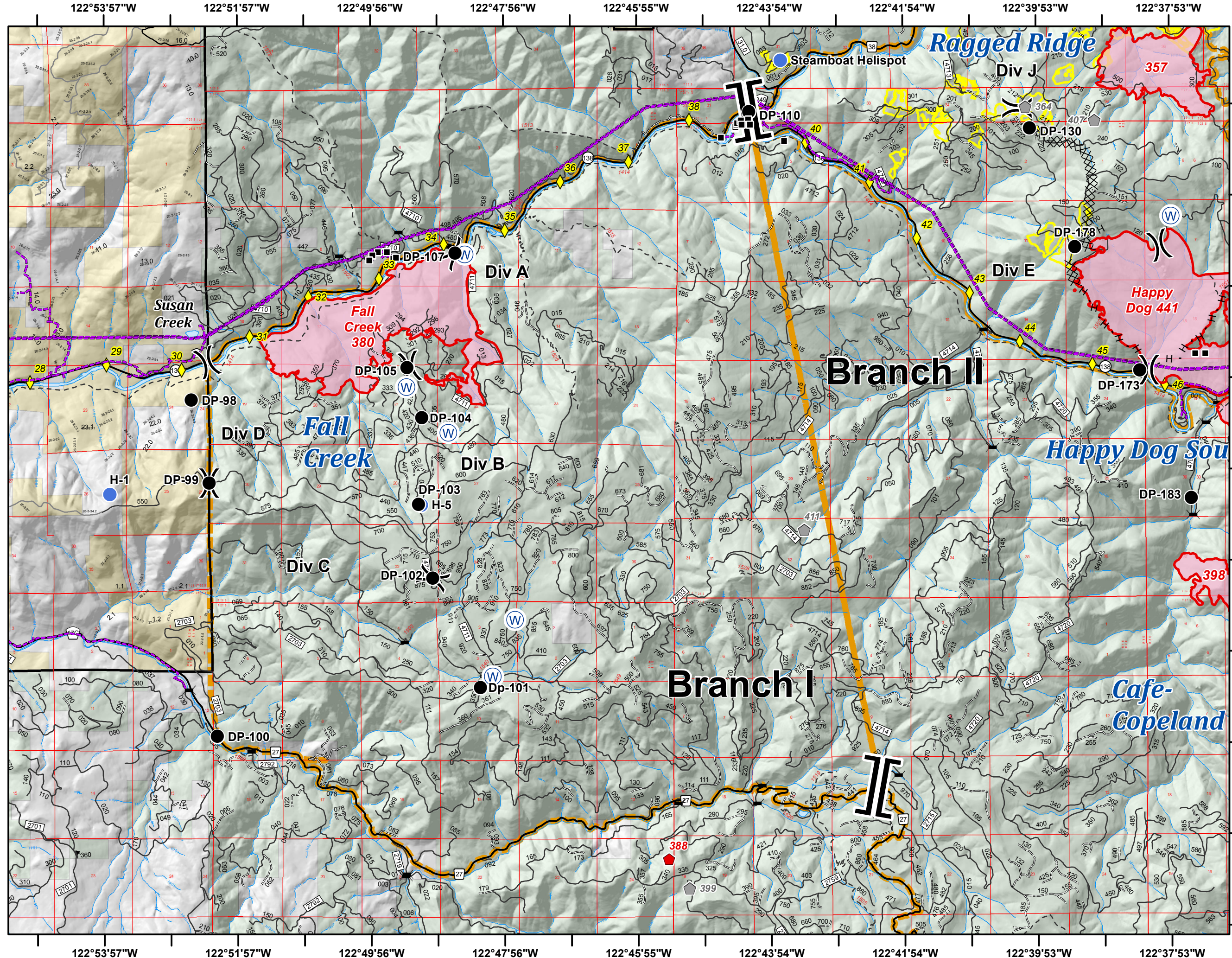
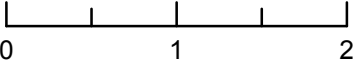


**Umpqua North Complex**  
**OR-UPF-000406**  
**8/20/2017**  
**6,878 Total Acres**  
**BRANCH I**

- Structure
- Drop Point
- ◆ Fire Location
- Helispot
- ⊙ Water Source
- ◆ Fire Location - Smoke Check
- ) Division Break
- || Branch Break
- ✈ Bridges
- ◆ Mile Post
- Uncontrolled Fire Edge
- XXXXX Completed Dozer Line
- H - H Completed Hand Line
- Forest or Grassland
- Powerline
- Bureau of Land Management
- Private
- United States Forest Service
- Umpqua North Complex
- National Forest Boundary



Miles



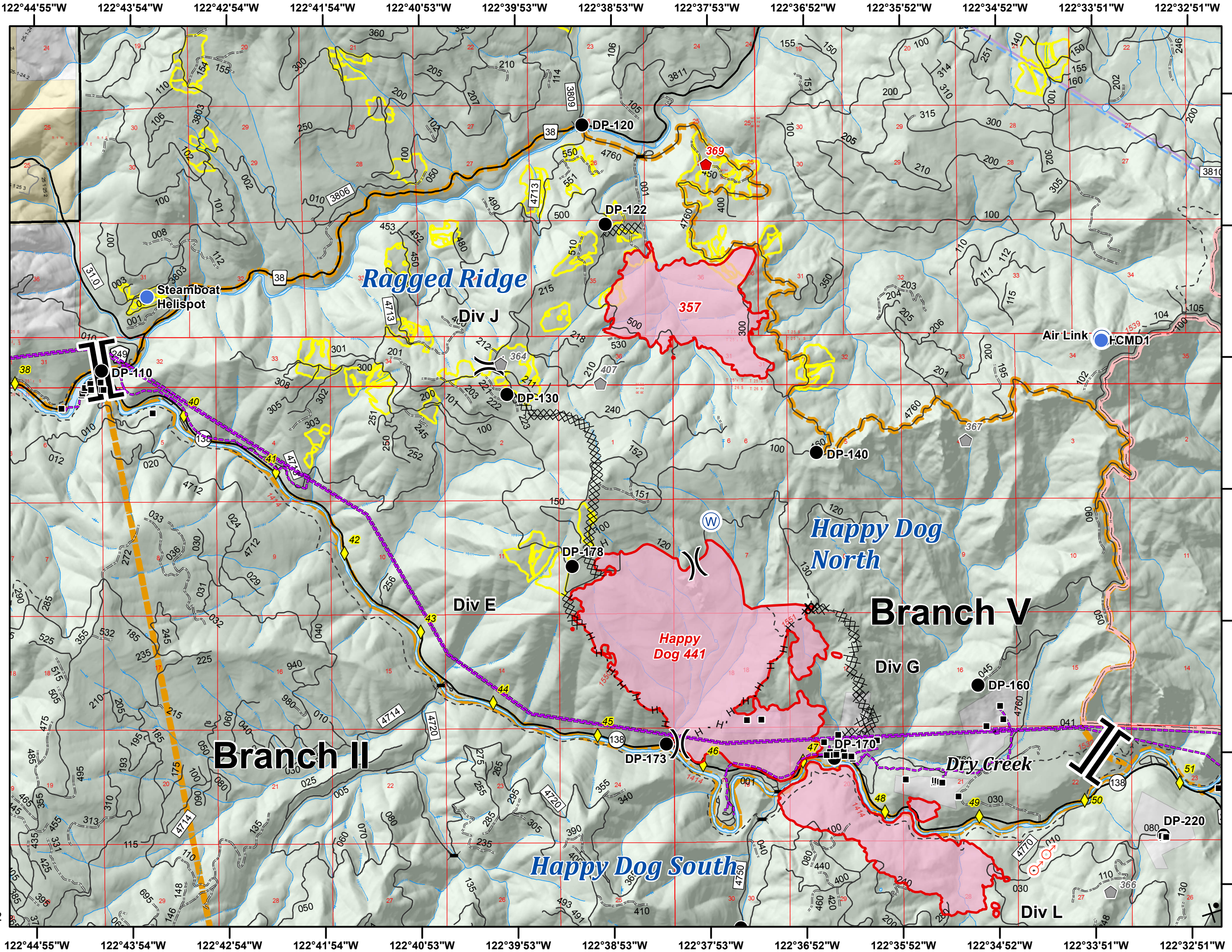
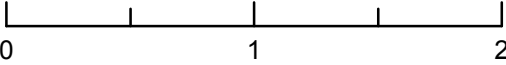


**Umpqua North Complex**  
**OR-UPF-000406**  
**8/20/2017**  
**6,878 Total Acres**  
**BRANCH V**

- Structure
- Drop Point
- ◆ Fire Location
- Helispot
- Ⓡ Repeater
- ⊕ Spot Fire
- Ⓜ Water Source
- ▣ Fire Location - Smoke Check
- ) Division Break
- || Branch Break
- ⚡ Bridges
- ◆ Mile Post
- Uncontrolled Fire Edge
- XXXXX Completed Dozer Line
- H · H Completed Hand Line
- ⊗ Proposed Dozer Line
- Forest or Grassland
- National Wilderness Area
- Powerline
- Bureau of Land Management
- Private
- United States Forest Service
- Umpqua North Complex
- National Forest Boundary



Miles



122°44'55"W 122°43'54"W 122°42'54"W 122°41'54"W 122°40'53"W 122°39'53"W 122°38'53"W 122°37'53"W 122°36'52"W 122°35'52"W 122°34'52"W 122°33'51"W 122°32'51"W

43°22'49"N  
43°21'49"N  
43°20'48"N  
43°19'48"N  
43°18'48"N  
43°17'47"N  
43°16'47"N



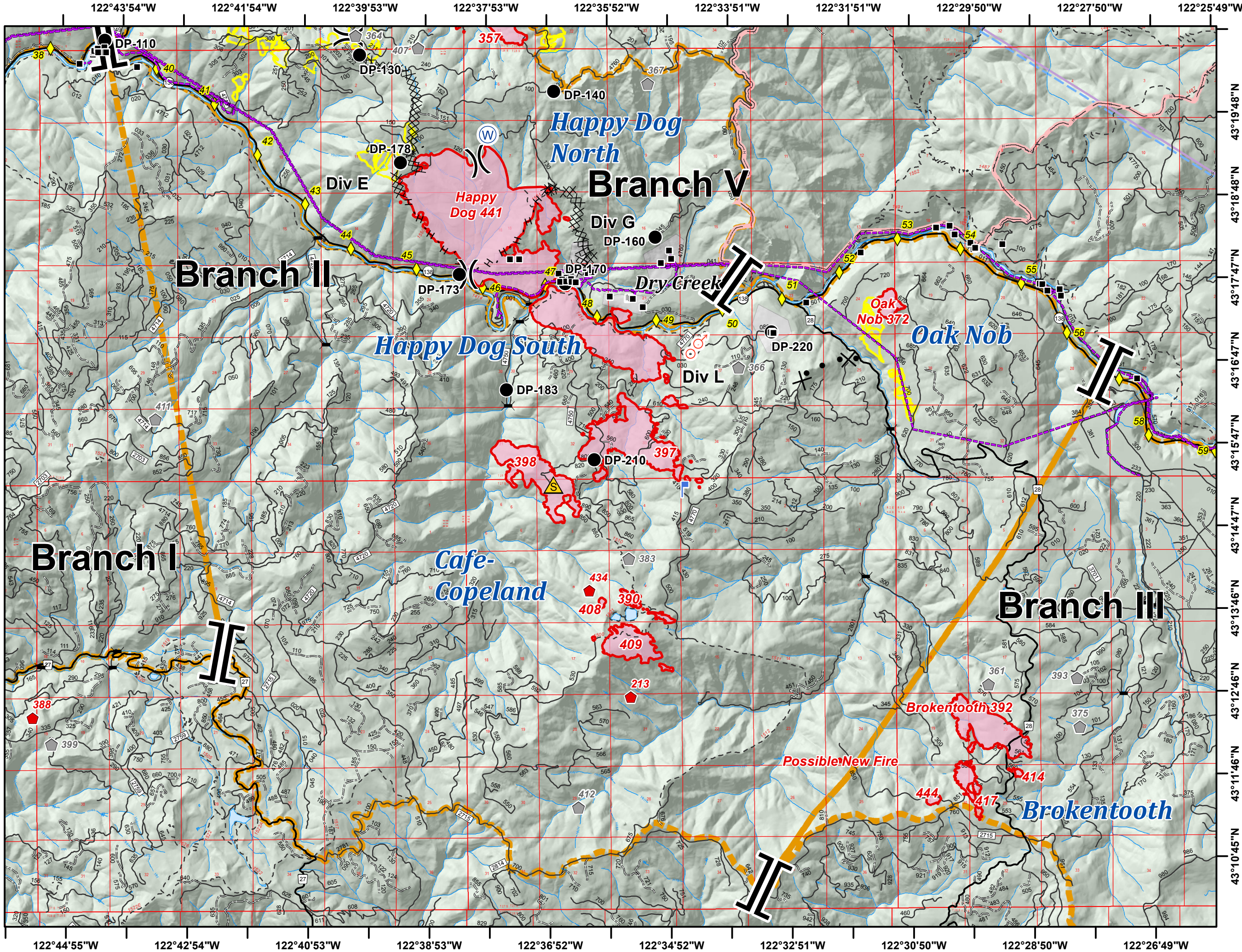
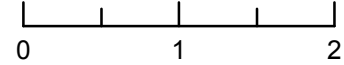
**Umpqua North Complex  
OR-UPF-000406  
8/20/2017  
6,878 Total Acres  
BRANCH II**

- Structure
- Drop Point
- ◆ Fire Location
- Helispot
- ▬ Lookout
- Ⓡ Repeater
- ⚠ Safety Zone
- ♂ Spot Fire
- Ⓜ Water Source
- ▬ Fire Location - Smoke Check
- ⎓ Division Break
- ⎓ Branch Break

- ⚡ Bridges
- ◆ Mile Post
- ▬ Uncontrolled Fire Edge
- ⊗ Completed Dozer Line
- H · H Completed Hand Line
- ⊗ Proposed Dozer Line
- ▬ National Wilderness Area
- ▬ Powerline
- ▬ Private
- ▬ United States Forest Service
- ▬ Umpqua North Complex
- ▬ National Forest Boundary



Miles



**Branch I**

**Branch II**

**Branch III**

**Branch V**

**Happy Dog North**

**Happy Dog South**

**Oak Nob**

**Cafe-Copeland**

**Brokentooth**

**Possible New Fire**

DP-110, DP-130, DP-140, DP-178, DP-170, DP-173, DP-183, DP-210, DP-220

Div E, Div G, Div L

357, 364, 367, 372, 388, 390, 397, 398, 399, 408, 409, 412, 414, 417, 418, 421, 422, 423, 424, 425, 426, 427, 428, 429, 430, 431, 432, 433, 434, 435, 436, 437, 438, 439, 440, 441, 442, 443, 444, 445, 446, 447, 448, 449, 450, 451, 452, 453, 454, 455, 456, 457, 458, 459, 460, 461, 462, 463, 464, 465, 466, 467, 468, 469, 470, 471, 472, 473, 474, 475, 476, 477, 478, 479, 480, 481, 482, 483, 484, 485, 486, 487, 488, 489, 490, 491, 492, 493, 494, 495, 496, 497, 498, 499, 500, 501, 502, 503, 504, 505, 506, 507, 508, 509, 510, 511, 512, 513, 514, 515, 516, 517, 518, 519, 520, 521, 522, 523, 524, 525, 526, 527, 528, 529, 530, 531, 532, 533, 534, 535, 536, 537, 538, 539, 540, 541, 542, 543, 544, 545, 546, 547, 548, 549, 550, 551, 552, 553, 554, 555, 556, 557, 558, 559, 560, 561, 562, 563, 564, 565, 566, 567, 568, 569, 570, 571, 572, 573, 574, 575, 576, 577, 578, 579, 580, 581, 582, 583, 584, 585, 586, 587, 588, 589, 590, 591, 592, 593, 594, 595, 596, 597, 598, 599, 600, 601, 602, 603, 604, 605, 606, 607, 608, 609, 610, 611, 612, 613, 614, 615, 616, 617, 618, 619, 620, 621, 622, 623, 624, 625, 626, 627, 628, 629, 630, 631, 632, 633, 634, 635, 636, 637, 638, 639, 640, 641, 642, 643, 644, 645, 646, 647, 648, 649, 650, 651, 652, 653, 654, 655, 656, 657, 658, 659, 660, 661, 662, 663, 664, 665, 666, 667, 668, 669, 670, 671, 672, 673, 674, 675, 676, 677, 678, 679, 680, 681, 682, 683, 684, 685, 686, 687, 688, 689, 690, 691, 692, 693, 694, 695, 696, 697, 698, 699, 700, 701, 702, 703, 704, 705, 706, 707, 708, 709, 710, 711, 712, 713, 714, 715, 716, 717, 718, 719, 720, 721, 722, 723, 724, 725, 726, 727, 728, 729, 730, 731, 732, 733, 734, 735, 736, 737, 738, 739, 740, 741, 742, 743, 744, 745, 746, 747, 748, 749, 750, 751, 752, 753, 754, 755, 756, 757, 758, 759, 760, 761, 762, 763, 764, 765, 766, 767, 768, 769, 770, 771, 772, 773, 774, 775, 776, 777, 778, 779, 780, 781, 782, 783, 784, 785, 786, 787, 788, 789, 790, 791, 792, 793, 794, 795, 796, 797, 798, 799, 800, 801, 802, 803, 804, 805, 806, 807, 808, 809, 810, 811, 812, 813, 814, 815, 816, 817, 818, 819, 820, 821, 822, 823, 824, 825, 826, 827, 828, 829, 830, 831, 832, 833, 834, 835, 836, 837, 838, 839, 840, 841, 842, 843, 844, 845, 846, 847, 848, 849, 850, 851, 852, 853, 854, 855, 856, 857, 858, 859, 860, 861, 862, 863, 864, 865, 866, 867, 868, 869, 870, 871, 872, 873, 874, 875, 876, 877, 878, 879, 880, 881, 882, 883, 884, 885, 886, 887, 888, 889, 890, 891, 892, 893, 894, 895, 896, 897, 898, 899, 900, 901, 902, 903, 904, 905, 906, 907, 908, 909, 910, 911, 912, 913, 914, 915, 916, 917, 918, 919, 920, 921, 922, 923, 924, 925, 926, 927, 928, 929, 930, 931, 932, 933, 934, 935, 936, 937, 938, 939, 940, 941, 942, 943, 944, 945, 946, 947, 948, 949, 950, 951, 952, 953, 954, 955, 956, 957, 958, 959, 960, 961, 962, 963, 964, 965, 966, 967, 968, 969, 970, 971, 972, 973, 974, 975, 976, 977, 978, 979, 980, 981, 982, 983, 984, 985, 986, 987, 988, 989, 990, 991, 992, 993, 994, 995, 996, 997, 998, 999, 1000



**Umpqua North Complex**  
**OR-UPF-000406**  
**8/20/2017**  
**6,878 Total Acres**  
**BRANCH III**

- Structure
- Ⓒ Camp
- Drop Point
- Helispot
- Ⓓ Repeater
- ▣ Fire Location - Smoke Check
- || Branch Break
- ✈ Bridges
- ◆ Mile Post
- Uncontrolled Fire Edge
- XXXXX Completed Dozer Line
- ✂ Proposed Dozer Line
- County/Alaska Borough
- Forest or Grassland
- National Rec/Scenic Area
- National Wilderness Area
- Powerline
- National Park Service
- Private
- United States Forest Service
- Umpqua North Complex
- National Forest Boundary



Miles

