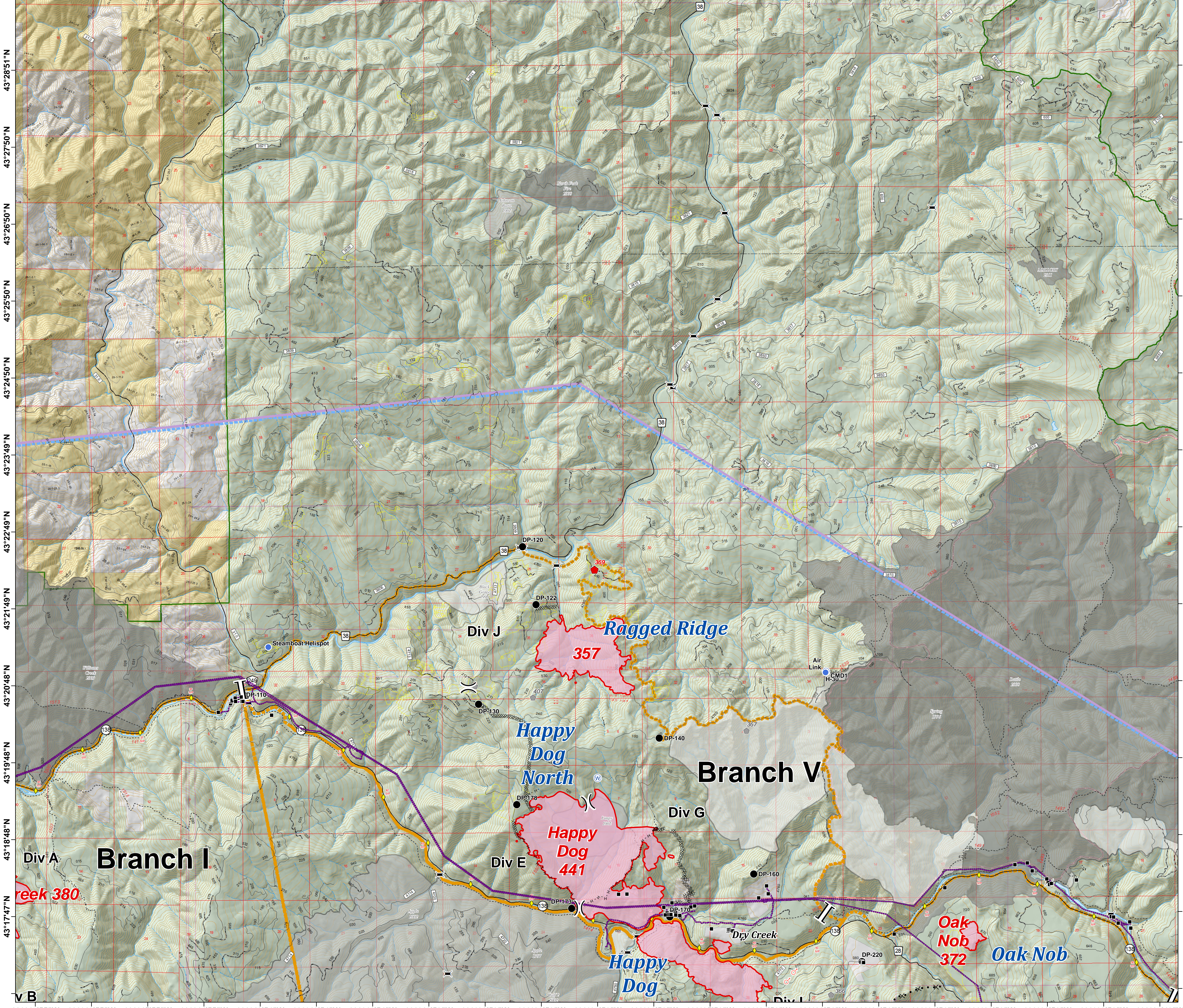
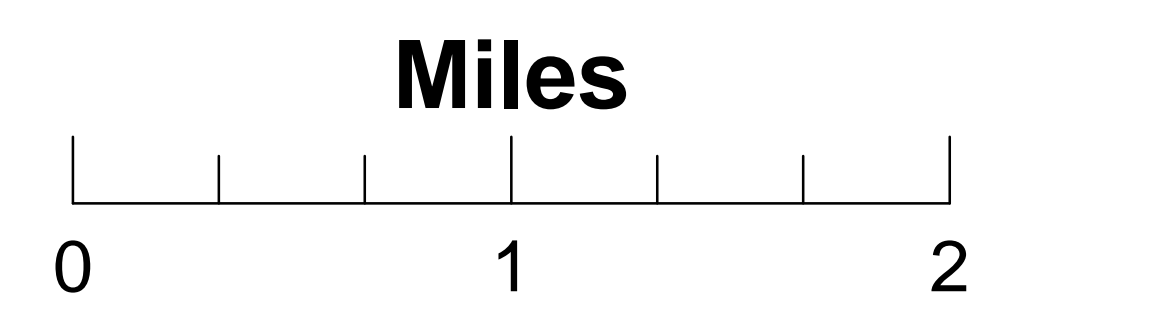


122°47'55"W 122°46'55"W 122°45'55"W 122°44'55"W 122°43'54"W 122°42'54"W 122°41'54"W 122°40'53"W 122°39'53"W 122°38'53"W 122°37'52"W 122°36'52"W 122°35'52"W 122°34'52"W 122°33'51"W 122°32'51"W 122°31'51"W 122°30'50"W 122°29'50"W 122°28'50"W 122°27'49"W

Umpqua North Complex
OR-UPF-000406
8/20/2017
6,878 Total Acres
BRANCH V Expanded

- Drop Point
- ◆ Fire Location
- Helispot
- Ⓜ Repeater
- Ⓢ Spot Fire
- Ⓜ Water Source
- Ⓢ Fire Location - Smoke Check
-) (Division Break
-] [Branch Break
- Structures
- ▭ TFR
- ◆ Mile Post
- Ⓜ Bridge
- Uncontrolled Fire Edge
- Ⓜ Completed Dozer Line
- - - Completed Hand Line
- × · × · · Proposed Dozer Line
- Powerline
- Historic Fires**
- 1987-1996
- 1997-2006
- 2007-2016
- Current Fire Perimeter
- Umpqua North Complex
- Active Timber Sales
- Bureau of Land Management
- Private
- United States Forest Service
- National Forest Boundary

Fire Name	Acres
305	242
320	83
357	588
396/397	42
398	337
Oak Nob 372	59
Broketooth 392	317
Fall Creek 380	1,722
Happy Dog 441	2,699



122°47'55"W 122°46'55"W 122°45'55"W 122°44'55"W 122°43'54"W 122°42'54"W 122°41'54"W 122°40'53"W 122°39'53"W 122°38'53"W 122°37'52"W 122°36'52"W 122°35'52"W 122°34'52"W 122°33'51"W 122°32'51"W 122°31'51"W 122°30'50"W 122°29'50"W 122°28'50"W 122°27'49"W