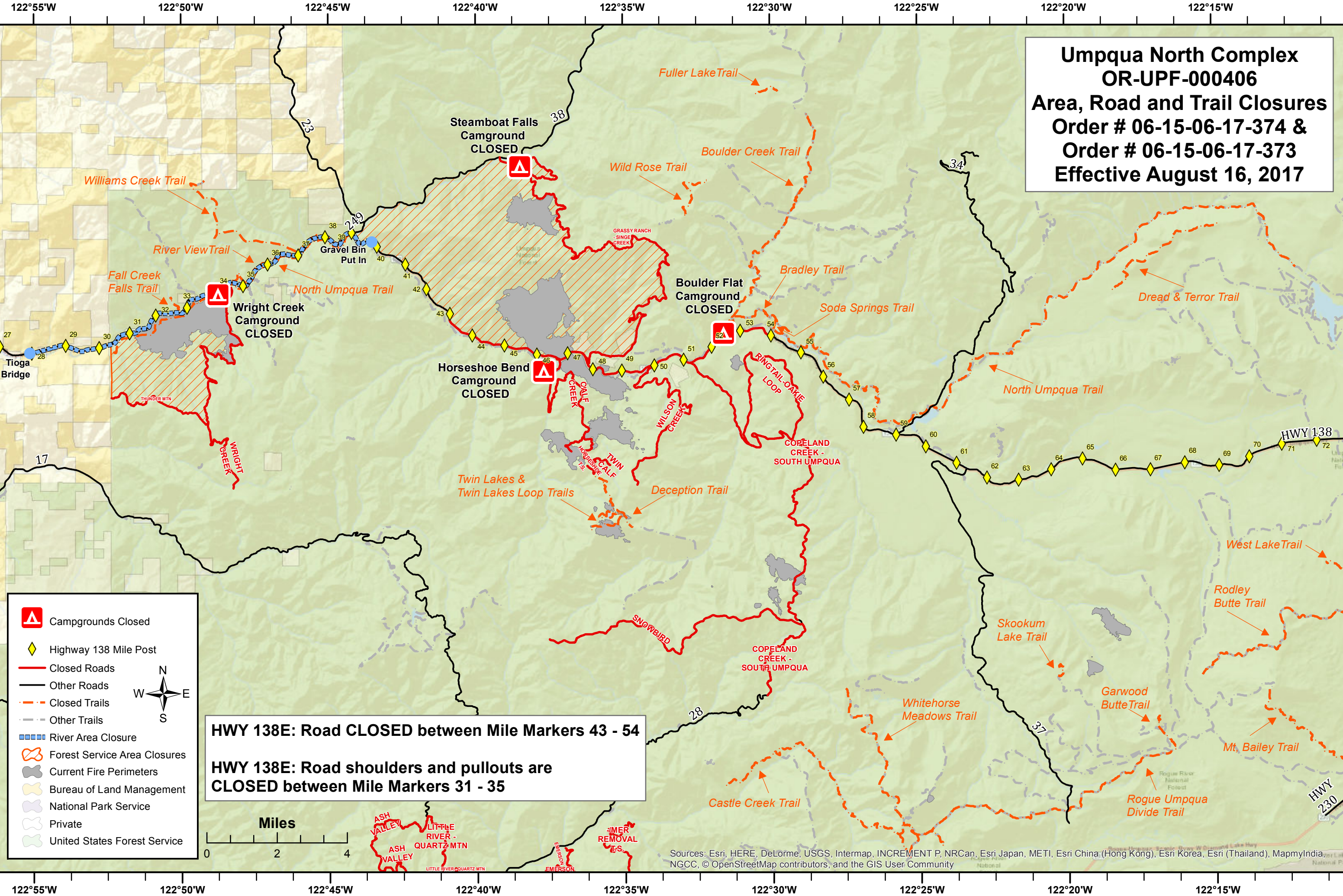


**Umpqua North Complex  
OR-UPF-000406  
Area, Road and Trail Closures  
Order # 06-15-06-17-374 &  
Order # 06-15-06-17-373  
Effective August 16, 2017**



- Campgrounds Closed
- Highway 138 Mile Post
- Closed Roads
- Other Roads
- Closed Trails
- Other Trails
- River Area Closure
- Forest Service Area Closures
- Current Fire Perimeters
- Bureau of Land Management
- National Park Service
- Private
- United States Forest Service

**HWY 138E: Road CLOSED between Mile Markers 43 - 54**  
**HWY 138E: Road shoulders and pullouts are CLOSED between Mile Markers 31 - 35**

Sources: Esri, HERE, DeLorme, USGS, Intermap, INCREMENT P, NRCan, Esri Japan, METI, Esri China (Hong Kong), Esri Korea, Esri (Thailand), MapmyIndia, NGCC, © OpenStreetMap contributors, and the GIS User Community