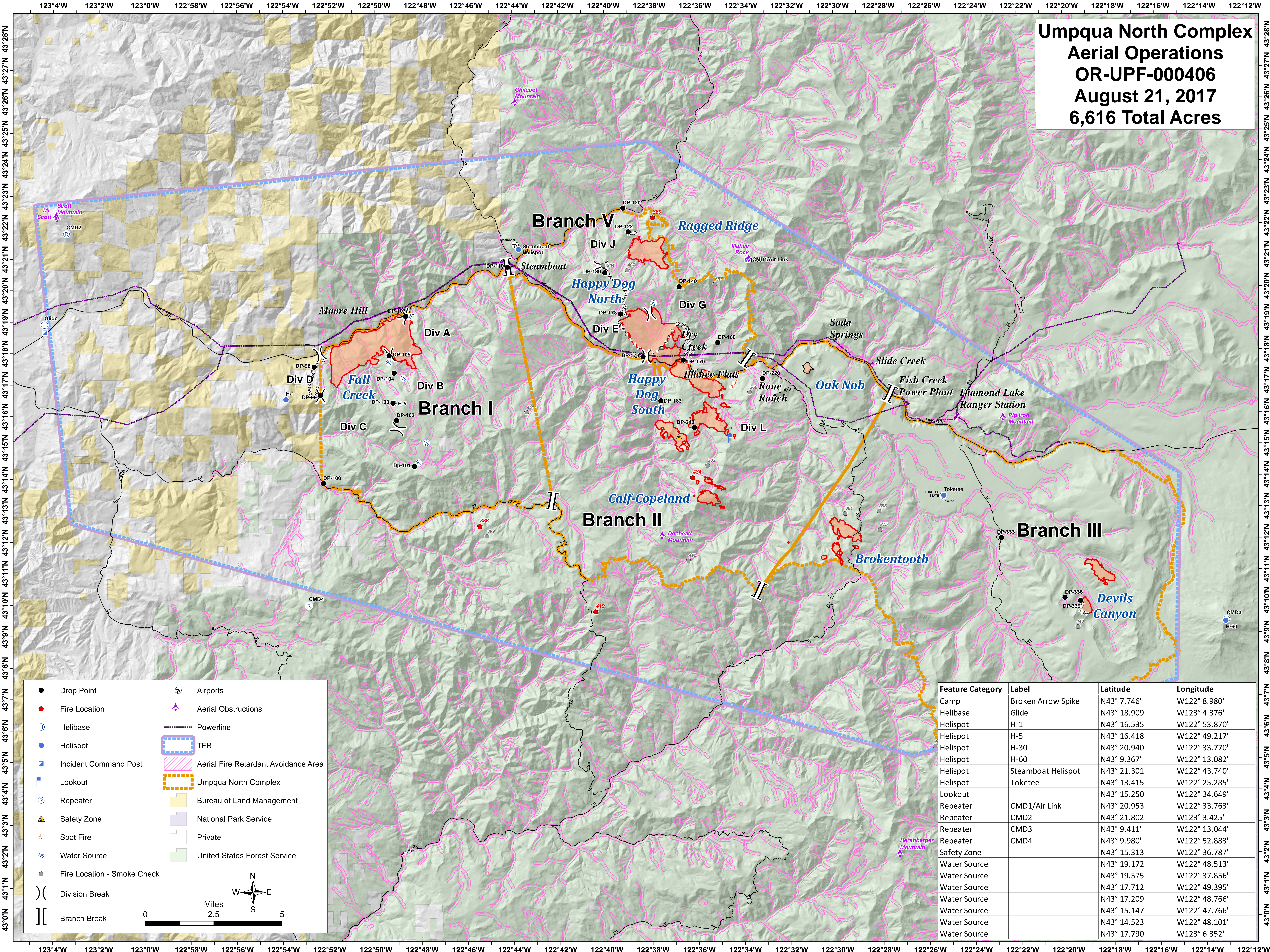


Umpqua North Complex
Aerial Operations
OR-UPF-000406
August 21, 2017
6,616 Total Acres



| | |
|-------------------------------|--|
| ● Drop Point | ✈ Airports |
| ● Fire Location | ⬆ Aerial Obstructions |
| ⊕ Helibase | — Powerline |
| ● Helispot | ▭ TFR |
| ▭ Incident Command Post | ▭ Aerial Fire Retardant Avoidance Area |
| ▭ Lookout | ▭ Umpqua North Complex |
| Ⓜ Repeater | ▭ Bureau of Land Management |
| ⚠ Safety Zone | ▭ National Park Service |
| ⬭ Spot Fire | ▭ Private |
| Ⓜ Water Source | ▭ United States Forest Service |
| ● Fire Location - Smoke Check | |
|) Division Break | |
| Branch Break | |

0 Miles 2.5 5

| Feature Category | Label | Latitude | Longitude |
|------------------|--------------------|--------------|---------------|
| Camp | Broken Arrow Spike | N43° 7.746' | W122° 8.980' |
| Helibase | Glide | N43° 18.909' | W123° 4.376' |
| Helispot | H-1 | N43° 16.535' | W122° 53.870' |
| Helispot | H-5 | N43° 16.418' | W122° 49.217' |
| Helispot | H-30 | N43° 20.940' | W122° 33.770' |
| Helispot | H-60 | N43° 9.367' | W122° 13.082' |
| Helispot | Steamboat Helispot | N43° 21.301' | W122° 43.740' |
| Helispot | Toketee | N43° 13.415' | W122° 25.285' |
| Lookout | | N43° 15.250' | W122° 34.649' |
| Repeater | CMD1/Air Link | N43° 20.953' | W122° 33.763' |
| Repeater | CMD2 | N43° 21.802' | W123° 3.425' |
| Repeater | CMD3 | N43° 9.411' | W122° 13.044' |
| Repeater | CMD4 | N43° 9.980' | W122° 52.883' |
| Safety Zone | | N43° 15.313' | W122° 36.787' |
| Water Source | | N43° 19.172' | W122° 48.513' |
| Water Source | | N43° 19.575' | W122° 37.856' |
| Water Source | | N43° 17.712' | W122° 49.395' |
| Water Source | | N43° 17.209' | W122° 48.766' |
| Water Source | | N43° 15.147' | W122° 47.766' |
| Water Source | | N43° 14.523' | W122° 48.101' |
| Water Source | | N43° 17.790' | W123° 6.352' |