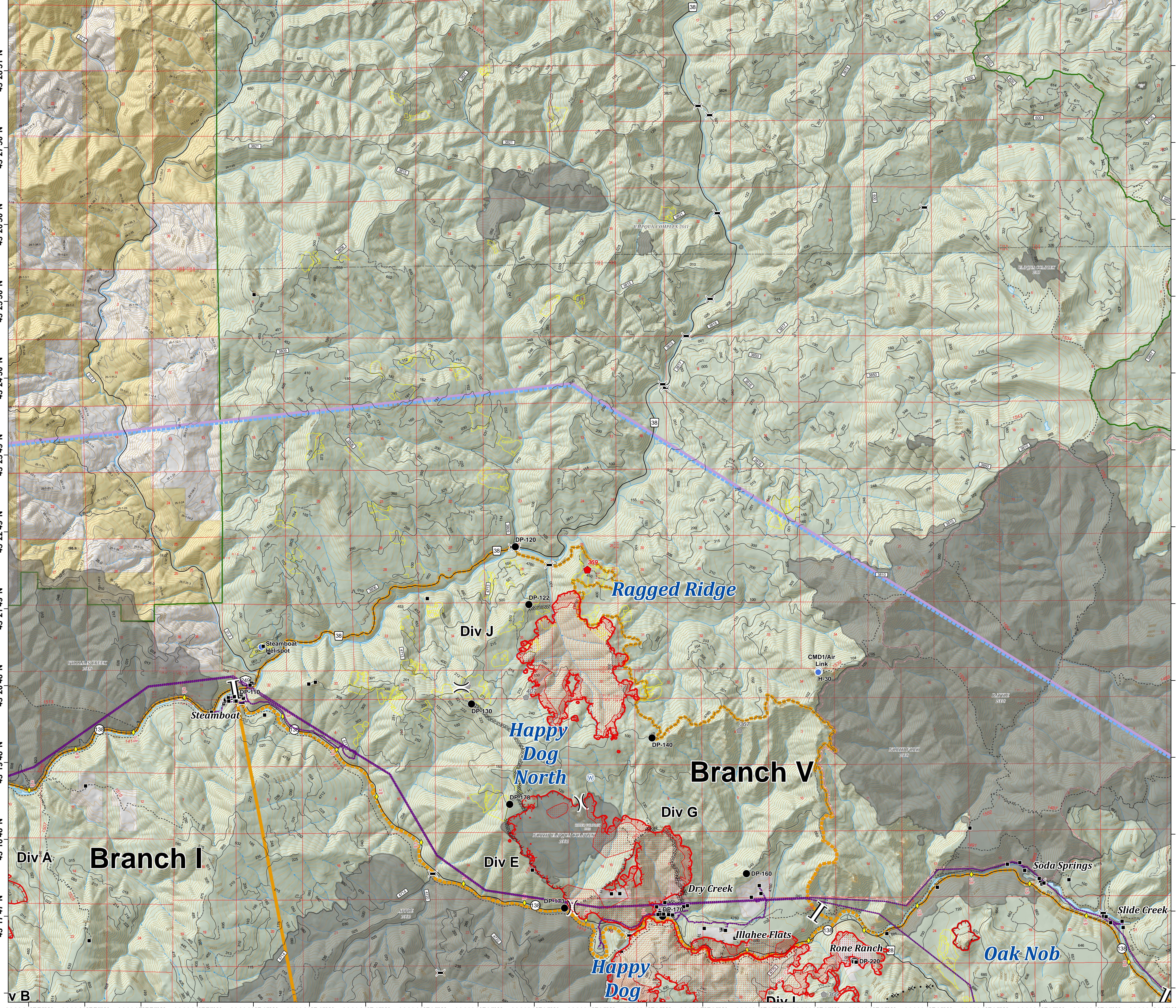


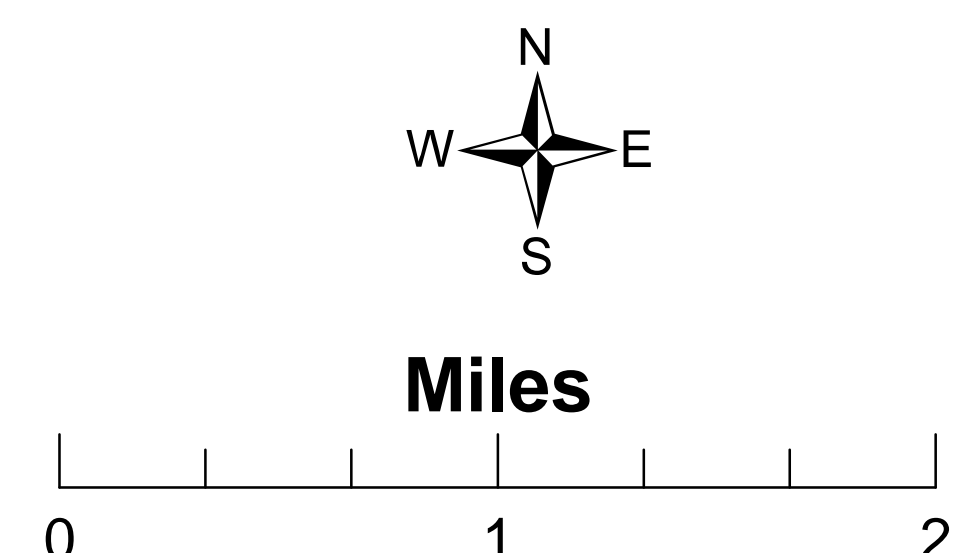
122°47'55"W 122°46'55"W 122°45'55"W 122°44'55"W 122°43'54"W 122°42'54"W 122°41'54"W 122°40'53"W 122°39'53"W 122°38'53"W 122°37'53"W 122°36'52"W 122°35'52"W 122°34'52"W 122°33'51"W 122°32'51"W 122°31'51"W 122°30'50"W 122°29'50"W 122°28'50"W 122°27'49"W



122°47'55"W 122°46'55"W 122°45'55"W 122°44'55"W 122°43'54"W 122°42'54"W 122°41'54"W 122°40'53"W 122°39'53"W 122°38'53"W 122°37'53"W 122°36'52"W 122°35'52"W 122°34'52"W 122°33'51"W 122°32'51"W 122°31'51"W 122°30'50"W 122°29'50"W 122°28'50"W 122°27'49"W

Umpqua North Complex
OR-UPF-000406
August 21, 2017
10,793 Total Acres
as of 8/21 0231 hrs
BRANCH V Expanded

- IR Isolated Heat
- ⊕ IR Intense Heat
- ⊙ IR Scattered Heat
- Drop Point
- ◆ Fire Location
- Helispot
- Ⓡ Repeater
- ⊕ Spot Fire
- Ⓜ Water Source
- ◆ Fire Location - Smoke Check
-) (Division Break
-] [Branch Break
- Structures
- TFR
- ◆ Mile Post
- ⌵ Bridge
- Uncontrolled Fire Edge
- Completed Line
- ⊘ Completed Dozer Line
- - - Completed Hand Line
- × · × · · Proposed Dozer Line
- Powerline
- Contours 100' Intervals
- Umpqua North Complex
- Active Timber Sales
- Bureau of Land Management
- Private
- United States Forest Service
- National Forest Boundary



v B

v B