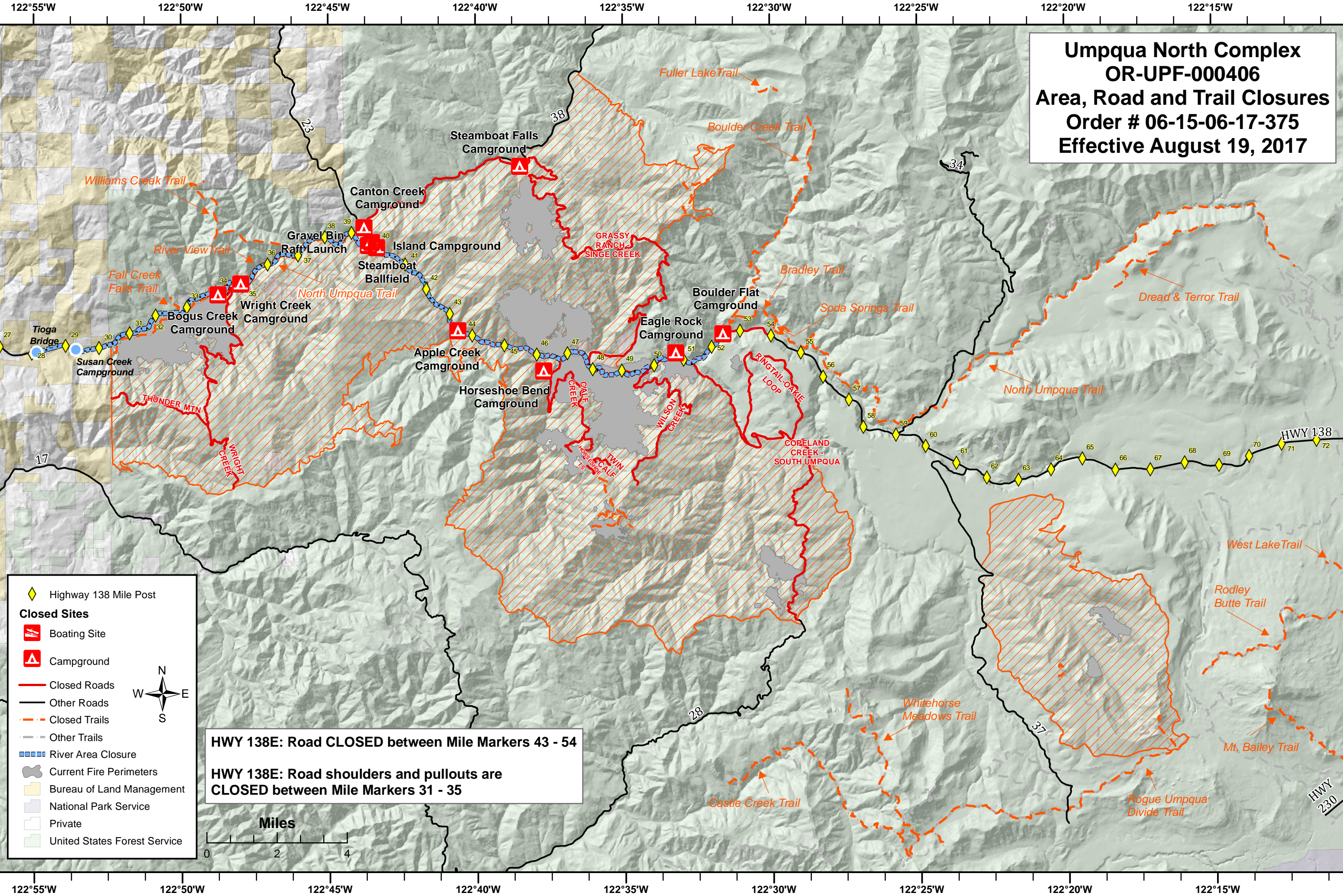


**Umpqua North Complex  
OR-UPF-000406  
Area, Road and Trail Closures  
Order # 06-15-06-17-375  
Effective August 19, 2017**



- ◆ Highway 138 Mile Post
- Closed Sites**
- Boating Site
- ▲ Campground
- Closed Roads
- Other Roads
- - - Closed Trails
- - - Other Trails
- ▬▬▬ River Area Closure
- ⬮ Current Fire Perimeters
- Bureau of Land Management
- National Park Service
- Private
- United States Forest Service

**HWY 138E: Road CLOSED between Mile Markers 43 - 54**

**HWY 138E: Road shoulders and pullouts are CLOSED between Mile Markers 31 - 35**

