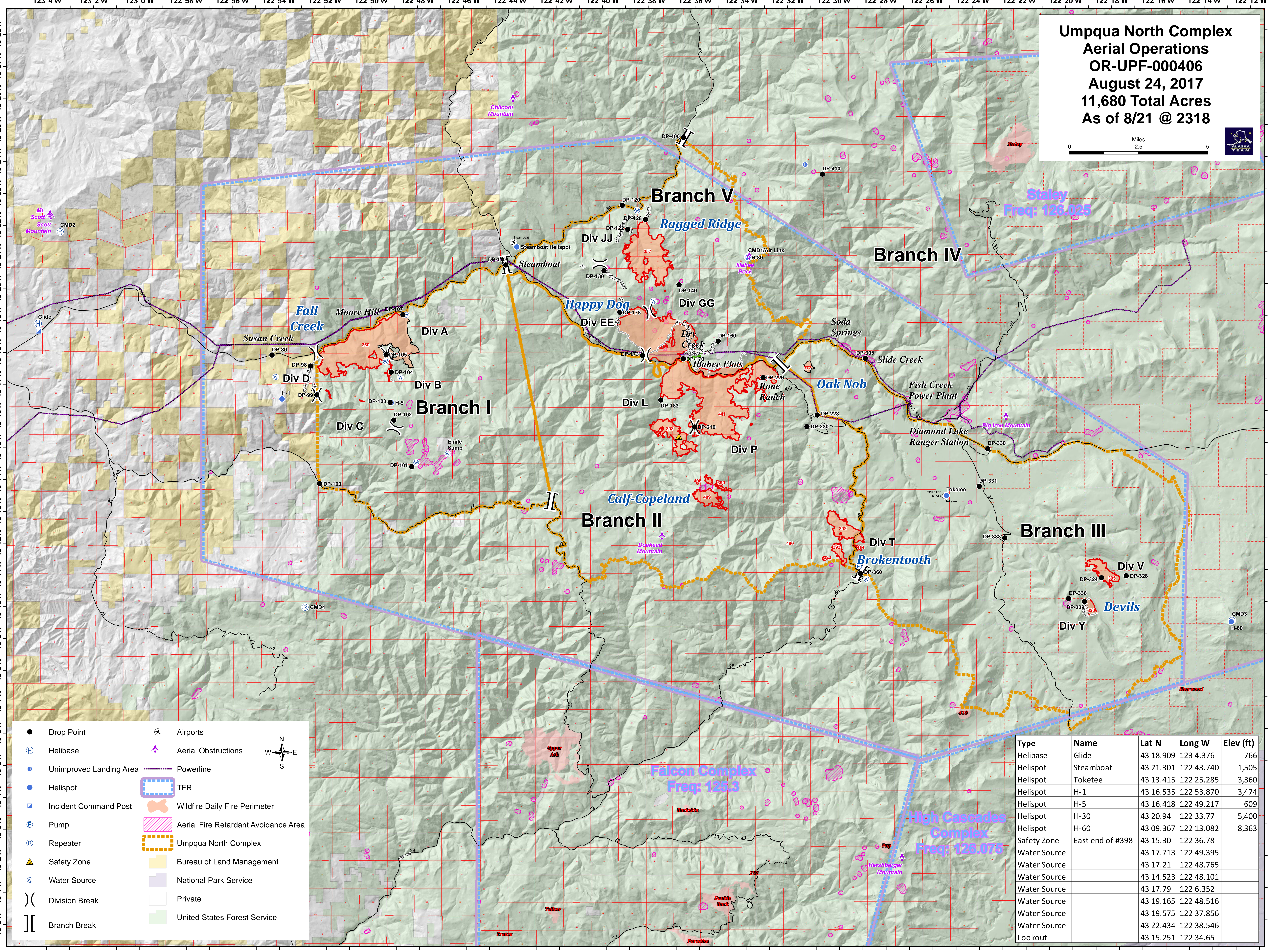
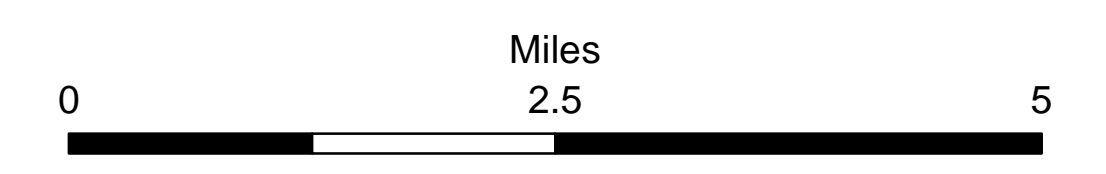
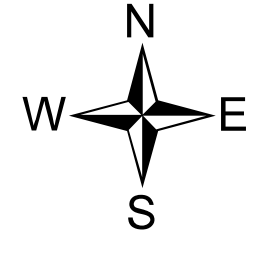


**Umpqua North Complex**  
**Aerial Operations**  
**OR-UPF-000406**  
**August 24, 2017**  
**11,680 Total Acres**  
**As of 8/21 @ 2318**



- Drop Point
- ⊕ Helibase
- Unimproved Landing Area
- Helispot
- ▣ Incident Command Post
- Ⓟ Pump
- Ⓡ Repeater
- ⚠ Safety Zone
- Ⓜ Water Source
- ⎓ Division Break
- ⎓ Branch Break
- ✈ Airports
- ⬆ Aerial Obstructions
- Powerline
- ▭ TFR
- ▭ Wildfire Daily Fire Perimeter
- ▭ Aerial Fire Retardant Avoidance Area
- ▭ Umpqua North Complex
- ▭ Bureau of Land Management
- ▭ National Park Service
- ▭ Private
- ▭ United States Forest Service



Type	Name	Lat N	Long W	Elev (ft)
Helibase	Glide	43 18.909	123 4.376	766
Helispot	Steamboat	43 21.301	122 43.740	1,505
Helispot	Toketee	43 13.415	122 25.285	3,360
Helispot	H-1	43 16.535	122 53.870	3,474
Helispot	H-5	43 16.418	122 49.217	609
Helispot	H-30	43 20.94	122 33.77	5,400
Helispot	H-60	43 09.367	122 13.082	8,363
Safety Zone	East end of #398	43 15.30	122 36.78	
Water Source		43 17.713	122 49.395	
Water Source		43 17.21	122 48.765	
Water Source		43 14.523	122 48.101	
Water Source		43 17.79	122 6.352	
Water Source		43 19.165	122 48.516	
Water Source		43 19.575	122 37.856	
Water Source		43 22.434	122 38.546	
Lookout		43 15.251	122 34.65	