









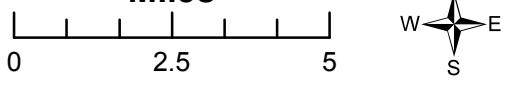

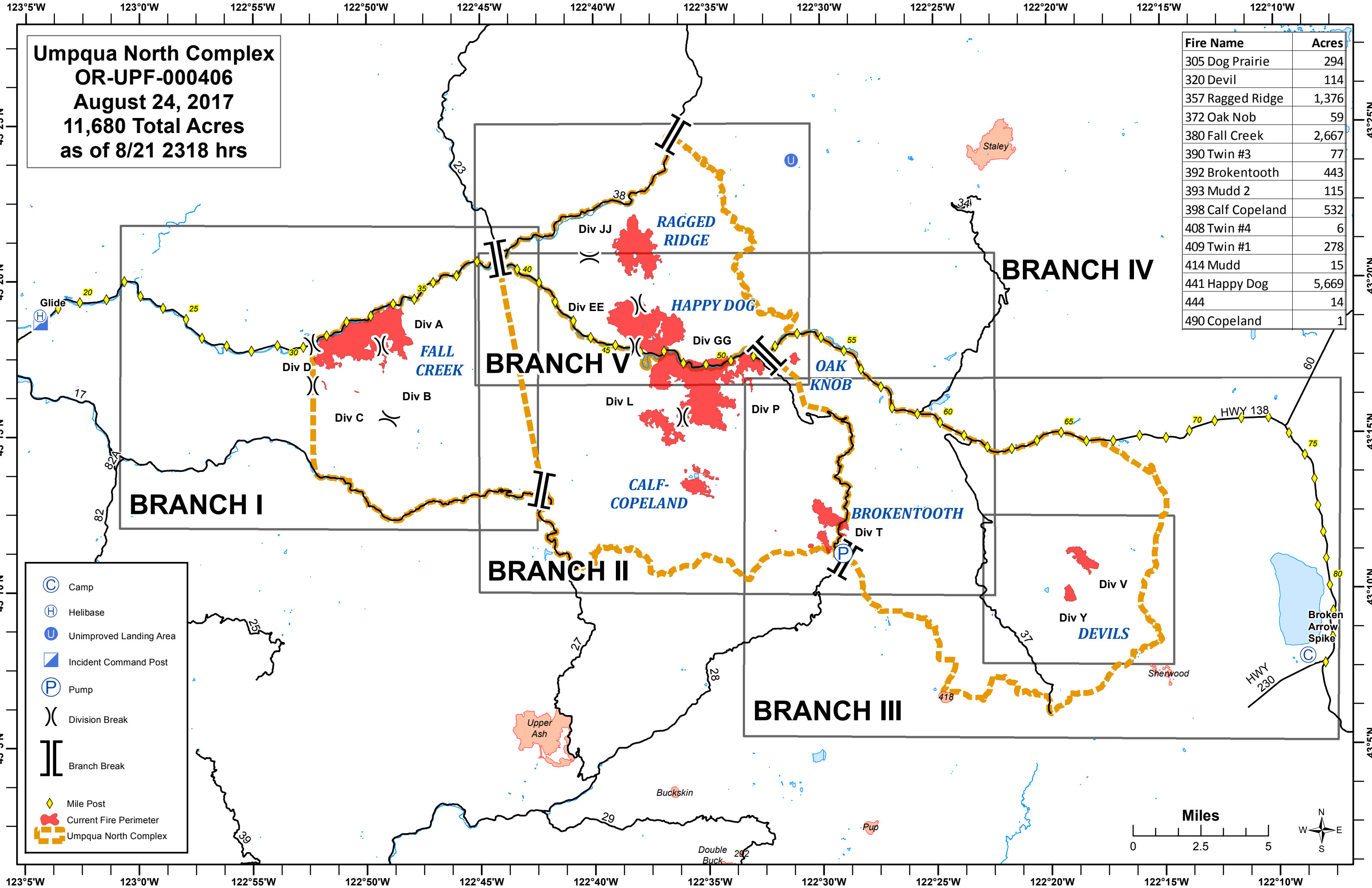


Umpqua North Complex
OR-UPF-000406
August 24, 2017
11,680 Total Acres
as of 8/21 2318 hrs

Fire Name	Acres
305 Dog Prairie	294
320 Devil	114
357 Ragged Ridge	1,376
372 Oak Nob	59
380 Fall Creek	2,667
390 Twin #3	77
392 Brokentooth	443
393 Mudd 2	115
398 Calf Copeland	532
408 Twin #4	6
409 Twin #1	278
414 Mudd	15
441 Happy Dog	5,669
444	14
490 Copeland	1

-  Camp
-  Helibase
-  Unimproved Landing Area
-  Incident Command Post
-  Pump
-  Division Break
-  Branch Break
-  Mile Post
-  Current Fire Perimeter
-  Umpqua North Complex

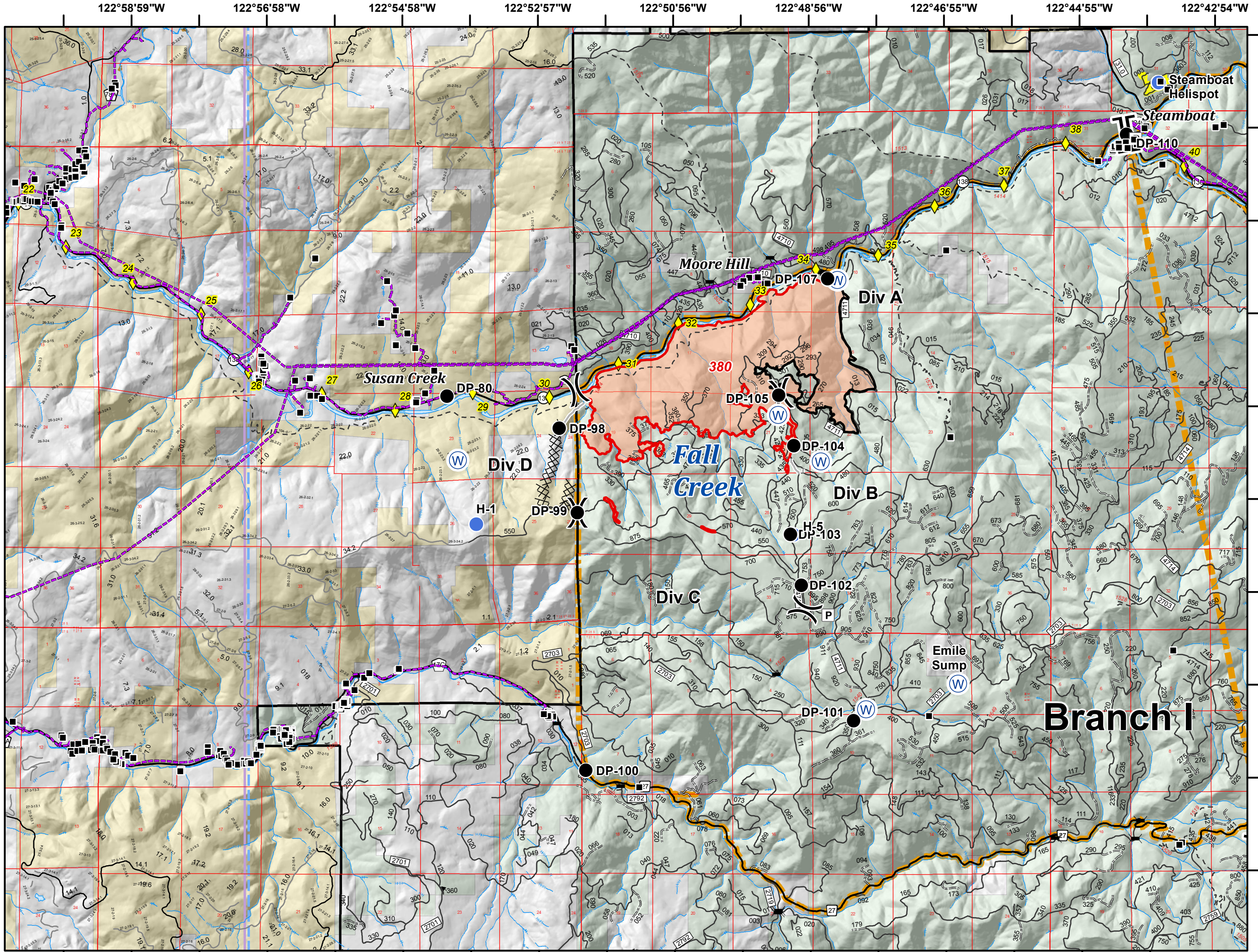
Miles

Umpqua North Complex
OR-UPF-000406
8/24/2017
11,680 Total Acres
as of 8/21 2318 hrs
BRANCH I

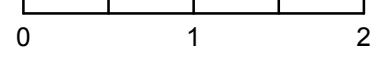


- Structure
- Drop Point
- Helispot
- Ⓜ Water Source
- ⎓ Division Break
- ⎓ Branch Break
- Ⓟ Parking Area
- ⎓ Bridges
- ◆ Mile Post
- Uncontrolled Fire Edge
- Completed Line
- ⊗ Completed Dozer Line
- Completed Hand Line
- Forest or Grassland
- Powerline
- Bureau of Land Management
- Private
- United States Forest Service
- Umpqua North Complex
- National Forest Boundary



Branch I

Miles

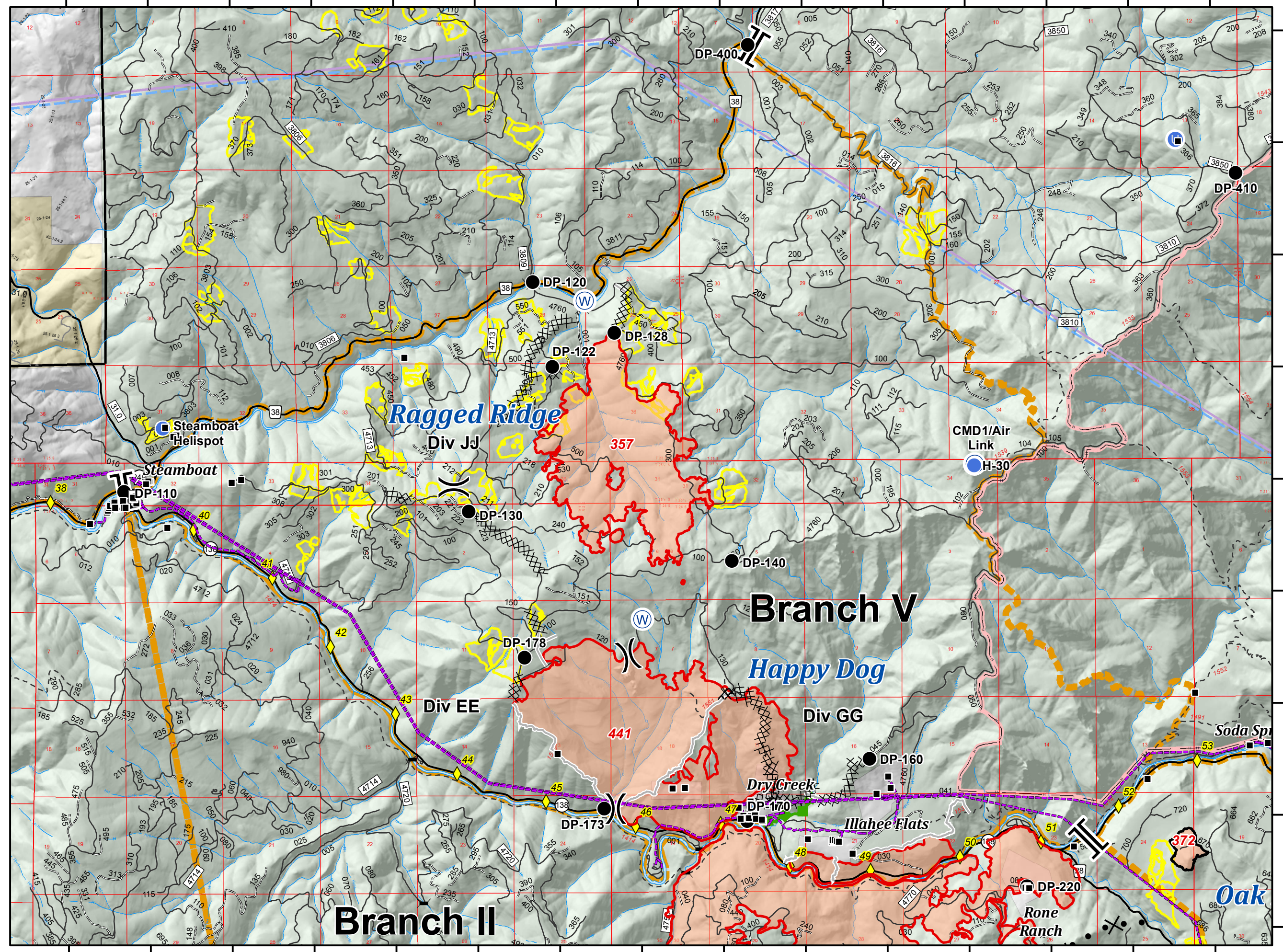


122°44'55"W 122°43'54"W 122°42'54"W 122°41'54"W 122°40'53"W 122°39'53"W 122°38'53"W 122°37'53"W 122°36'52"W 122°35'52"W 122°34'52"W 122°33'51"W 122°32'51"W 122°31'51"W 122°30'50"W

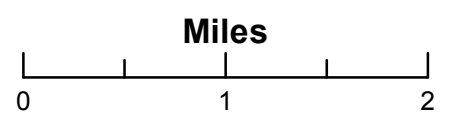
Umpqua North Complex
OR-UPF-000406
8/24/2017
11,680 Total Acres
as of 8/21 2318 hrs
BRANCH V



- Structure
- Drop Point
- U Unimproved Landing Area
- Helispot
- Ⓡ Repeater
- Ⓜ Water Source
-) Division Break
- [[Branch Break
- Ⓟ Parking Area
- ≡ Bridges
- ◆ Mile Post
- Uncontrolled Fire Edge
- Completed Line
- XXXXX Completed Dozer Line
- Completed Hand Line
- ⊗ Proposed Dozer Line
- Escape Route
- Forest or Grassland
- National Wilderness Area
- Powerline
- Bureau of Land Management
- Private
- United States Forest Service
- Umpqua North Complex
- National Forest Boundary



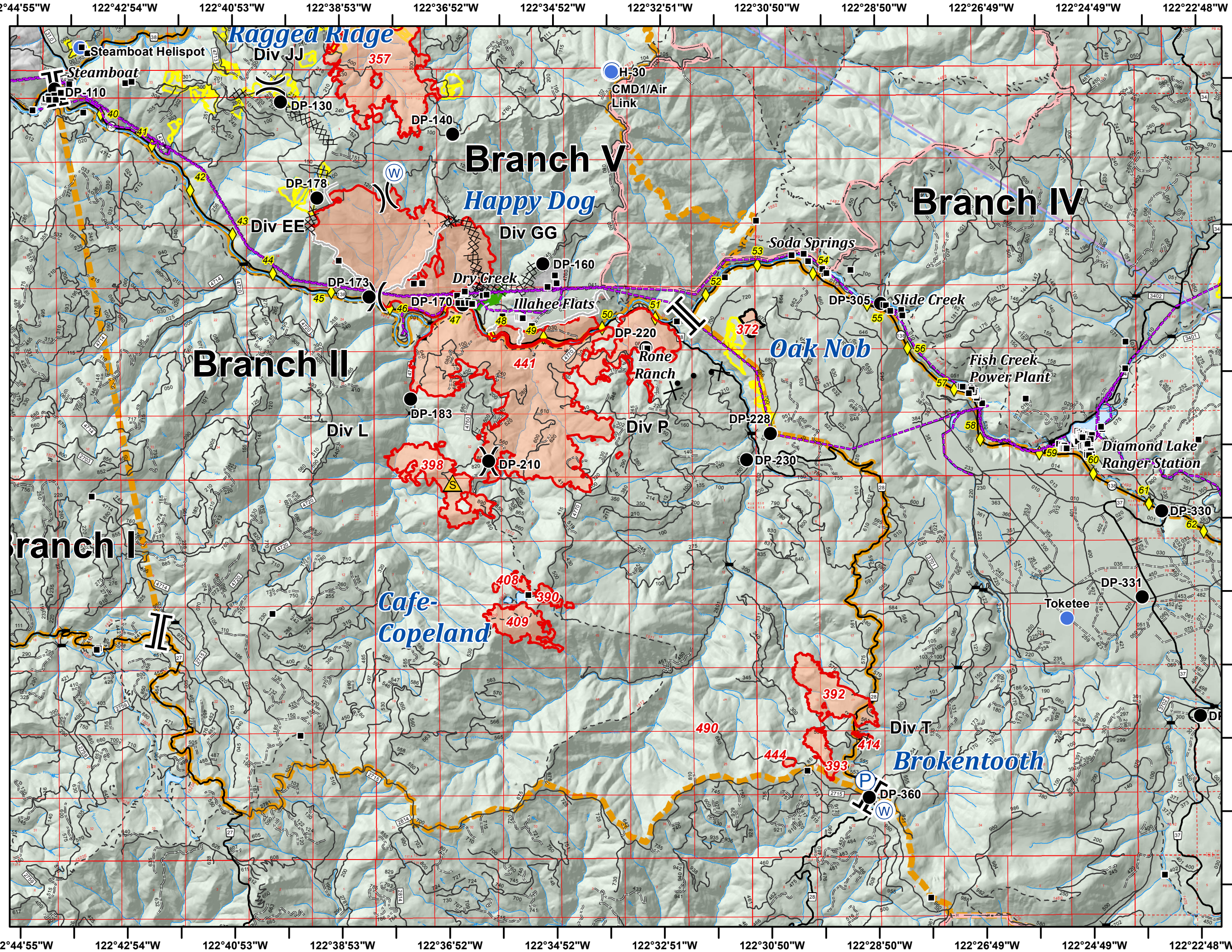
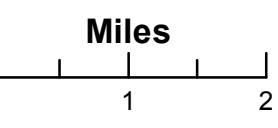
122°44'55"W 122°43'54"W 122°42'54"W 122°41'54"W 122°40'53"W 122°39'53"W 122°38'53"W 122°37'53"W 122°36'52"W 122°35'52"W 122°34'52"W 122°33'51"W 122°32'51"W 122°31'51"W 122°30'50"W



43°24'50"N
43°23'49"N
43°22'49"N
43°21'49"N
43°20'48"N
43°19'48"N
43°18'48"N
43°17'47"N
43°16'47"N

Umpqua North Complex
OR-UPF-000406
8/24/2017
11,680 Total Acres
as of 8/21 2318 hrs
BRANCH II

- Structure
- Drop Point
- Helispot
- Ⓟ Pump
- Ⓡ Repeater
- ▲ Safety Zone
- Ⓜ Water Source
- ⌋ Division Break
- ⌋ Branch Break
- Ⓟ Parking Area
- ⌋ Bridges
- ◆ Mile Post
- Uncontrolled Fire Edge
- Completed Line
- XXXXX Completed Dozer Line
- Completed Hand Line
- ⊗ Proposed Dozer Line
- Escape Route
- National Wilderness Area
- Powerline
- Private
- United States Forest Service
- Umpqua North Complex
- National Forest Boundary



Umpqua North Complex
OR-UPF-000406
8/24/2017
11,680 Total Acres
as of 8/21 2318 hrs
BRANCH III



- Structure
- ⊙ Camp
- Drop Point
- Helispot
- Ⓟ Pump
- Ⓡ Repeater
- Ⓜ Water Source
- || Branch Break
- ✂ Bridges
- ◆ Mile Post
- Uncontrolled Fire Edge
- Completed Line
- XXXXX Completed Dozer Line
- Completed Hand Line
- ✂ • Proposed Dozer Line
- County/Alaska Borough
- Forest or Grassland
- - - National Rec/Scenic Area
- National Wilderness Area
- Powerline
- National Park Service
- Private
- United States Forest Service
- Umpqua North Complex
- National Forest Boundary

