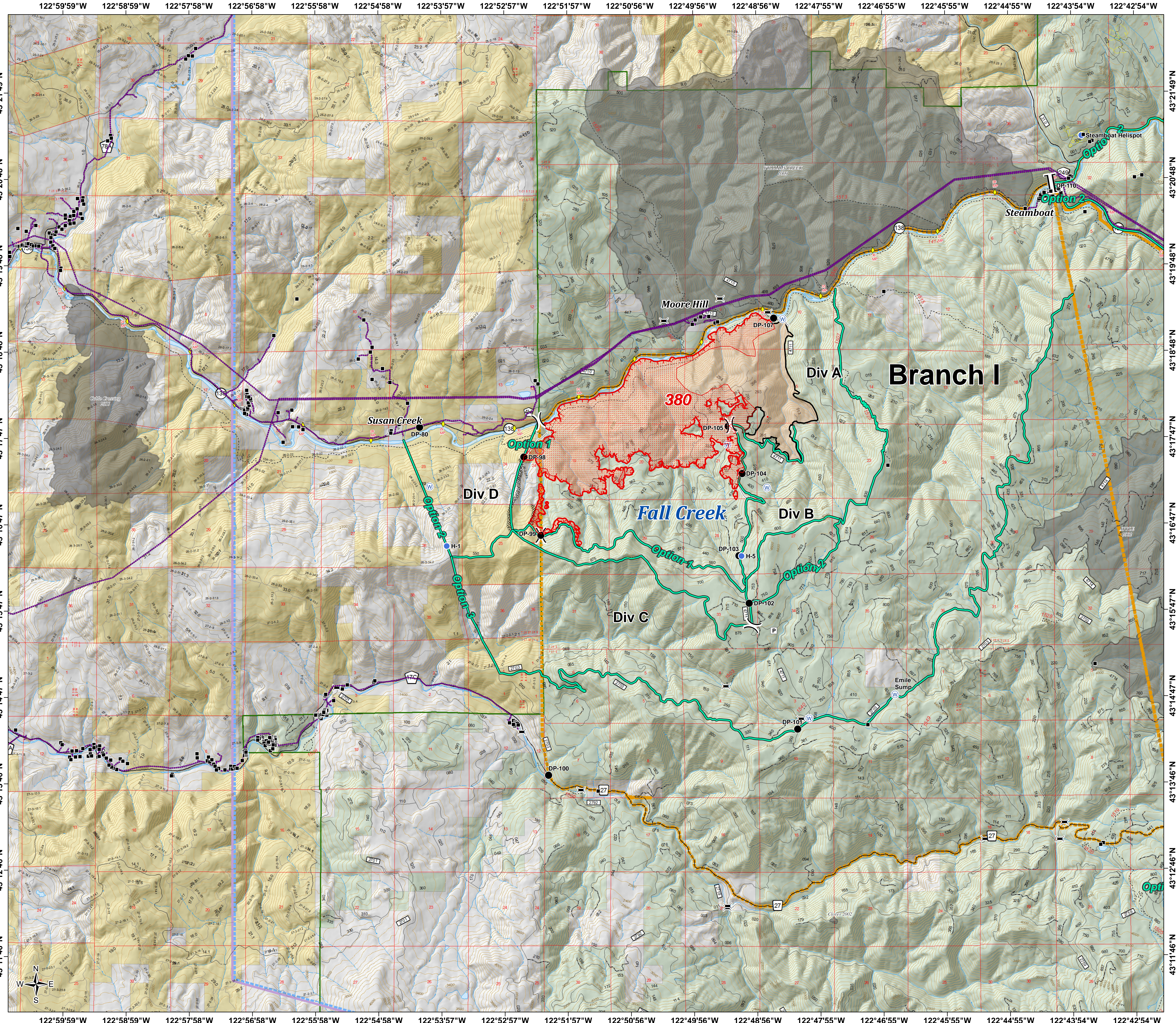
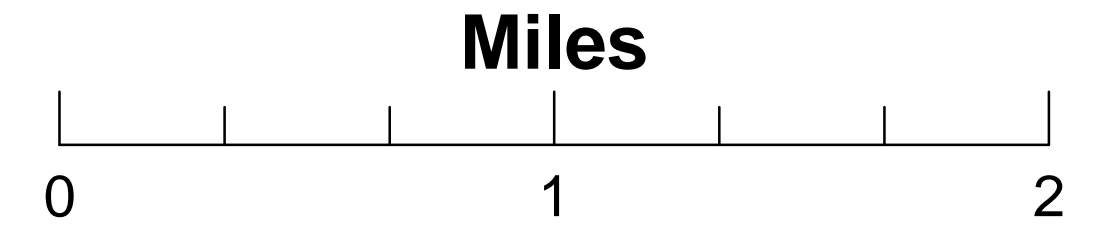


**Umpqua North Complex
OR-UPF-000406
August 24, 2017
13,546 Total Acres
as of 8/23 2251 hrs
BRANCH I**

- IR Isolated Heat
- ⊕ IR Intense Heat
- ⊘ IR Scattered Heat
- Drop Point
- Helispot
- ⊕ Water Source
-) Division Break
- | Branch Break
- P Parking Area
- Structures
- TFR
- ◆ Mile Post
- X Bridge
- Uncontrolled Fire Edge
- Completed Line
- ⋯ Completed Dozer Line
- Completed Hand Line
- Strategic Confinement Options
- Powerline
- Contours 100' Intervals
- ⊕ Current Fire Perimeter
- Umpqua North Complex
- Active Timber Sales
- Bureau of Land Management
- Private
- United States Forest Service
- National Forest Boundary

Num	Name	Acres
305	DL Dog Prairie	319
320	DL Devil	114
357	Ragged Ridge	1,561
372	Oak Nob	59
380	Fall Creek	2,934
390	NU Twin #3	110
392	Brokentooh	591
393	DL Mudd 2	134
398	Calf Copeland	660
408	NU Twin #4	6
409	NU Twin #1	356
414	DL Mudd	19
441	Happy Dog	6,662
444	DL 444	15
490	Copeland	4
TOTAL		13,546



43°21'49"N
43°20'48"N
43°19'48"N
43°18'48"N
43°17'47"N
43°16'47"N
43°15'47"N
43°14'47"N
43°13'46"N
43°12'46"N
43°11'46"N

122°59'59"W
122°58'59"W
122°57'58"W
122°56'58"W
122°55'58"W
122°54'58"W
122°53'57"W
122°52'57"W
122°51'57"W
122°50'56"W
122°49'56"W
122°48'56"W
122°47'55"W
122°46'55"W
122°45'55"W
122°44'55"W
122°43'54"W
122°42'54"W