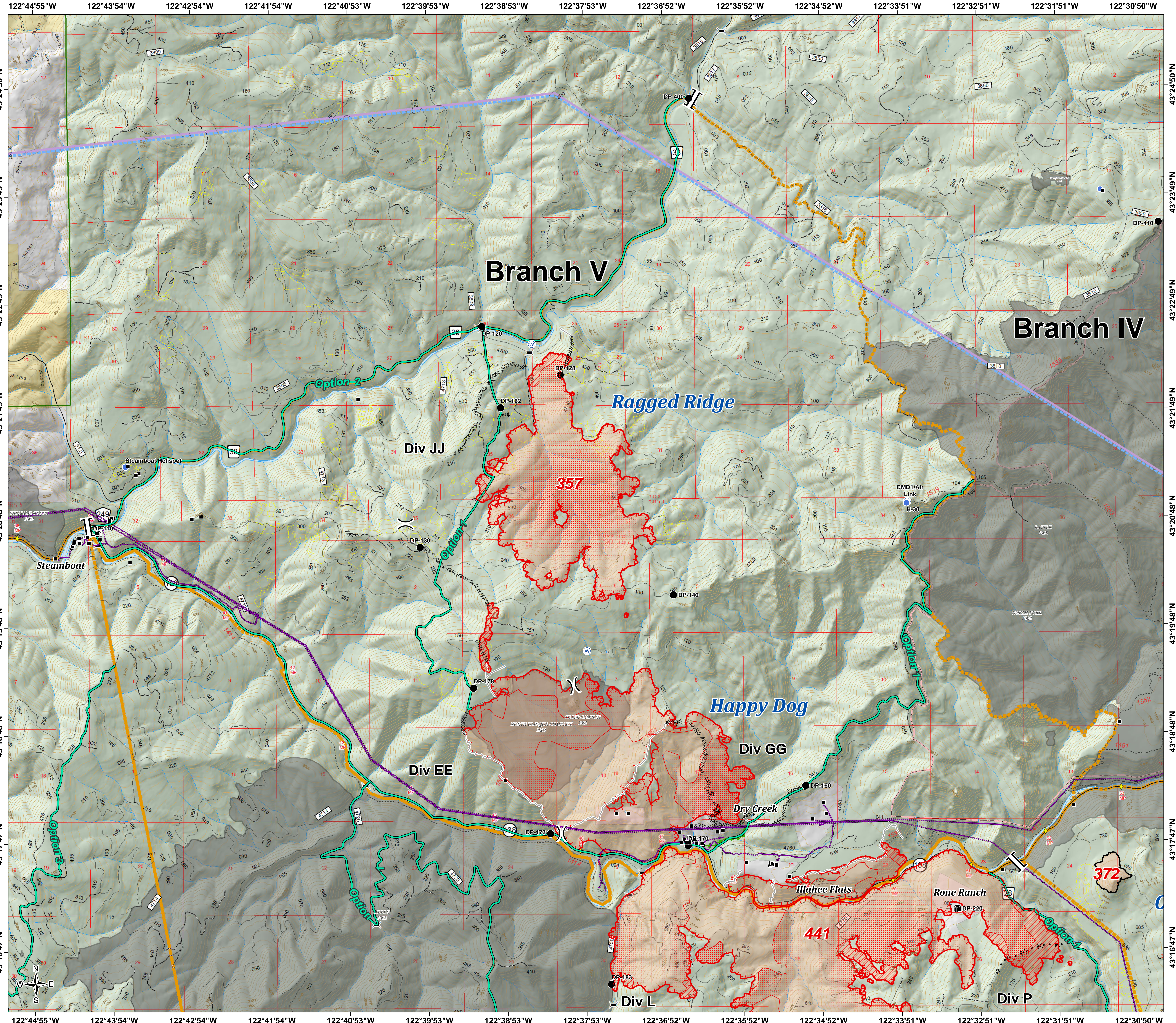
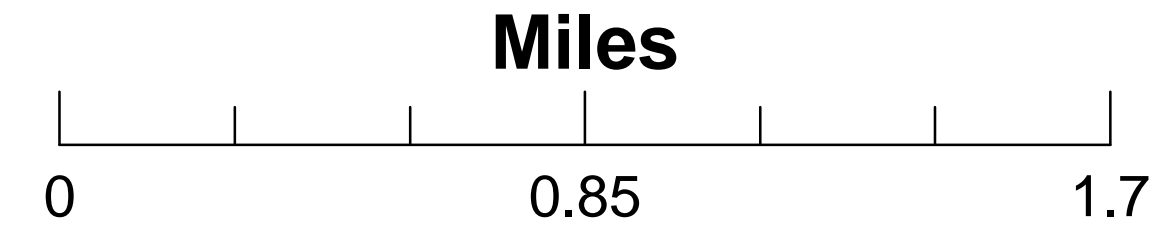


**Umpqua North Complex
OR-UPF-000406
August 24, 2017
13,546 Total Acres
as of 8/23 2251 hrs
BRANCH V**

- IR Isolated Heat
- ⊕ IR Intense Heat
- ⊘ IR Scattered Heat
- Drop Point
- ⊙ Unimproved Landing Area
- ⊙ Helispot
- Ⓡ Repeater
- Ⓜ Water Source
-) (Division Break
- || Branch Break
- P Parking Area
- Structures
- ⊠ TFR
- ◆ Mile Post
- ⌵ Bridge
- Uncontrolled Fire Edge
- Completed Line
- ⊘ Completed Dozer Line
- Completed Hand Line
- ⊘ Proposed Dozer Line
- Escape Route
- Strategic Confinement Options
- Powerline
- Contours 100' Intervals
- ⊕ Current Fire Perimeter
- ⊠ Umpqua North Complex
- ⊠ Active Timber Sales
- ⊠ Bureau of Land Management
- ⊠ Private
- United States Forest Service
- ⊠ National Forest Boundary

Num	Name	Acres
305	DL Dog Prairie	319
320	DL Devil	114
357	Ragged Ridge	1,561
372	Oak Nob	59
380	Fall Creek	2,934
390	NU Twin #3	110
392	Broketooth	591
393	DL Mudd 2	134
398	Calf Copeland	660
408	NU Twin #4	6
409	NU Twin #1	356
414	DL Mudd	19
441	Happy Dog	6,662
444	DL 444	15
490	Copeland	4
TOTAL		13,546



122°44'55"W 122°43'54"W 122°42'54"W 122°41'54"W 122°40'53"W 122°39'53"W 122°38'53"W 122°37'53"W 122°36'52"W 122°35'52"W 122°34'52"W 122°33'51"W 122°32'51"W 122°31'51"W 122°30'50"W

43°24'50"N 43°23'49"N 43°22'49"N 43°21'49"N 43°20'48"N 43°19'48"N 43°18'48"N 43°17'47"N 43°16'47"N