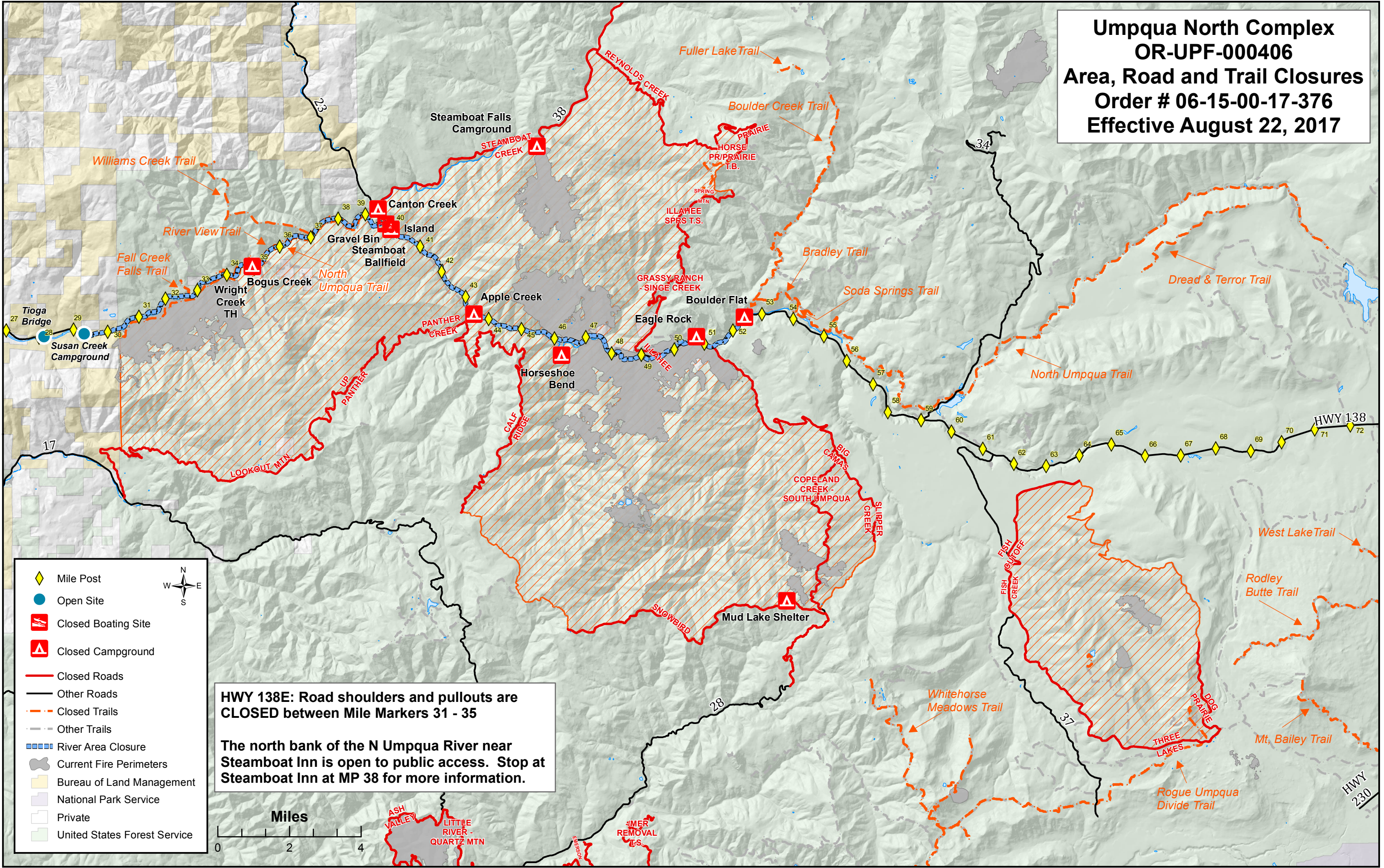


**Umpqua North Complex
OR-UPF-000406
Area, Road and Trail Closures
Order # 06-15-00-17-376
Effective August 22, 2017**



**HWY 138E: Road shoulders and pullouts are
CLOSED between Mile Markers 31 - 35**

**The north bank of the N Umpqua River near
Steamboat Inn is open to public access. Stop at
Steamboat Inn at MP 38 for more information.**

- Mile Post
- Open Site
- Closed Boating Site
- Closed Campground
- Closed Roads
- Other Roads
- Closed Trails
- Other Trails
- River Area Closure
- Current Fire Perimeters
- Bureau of Land Management
- National Park Service
- Private
- United States Forest Service

