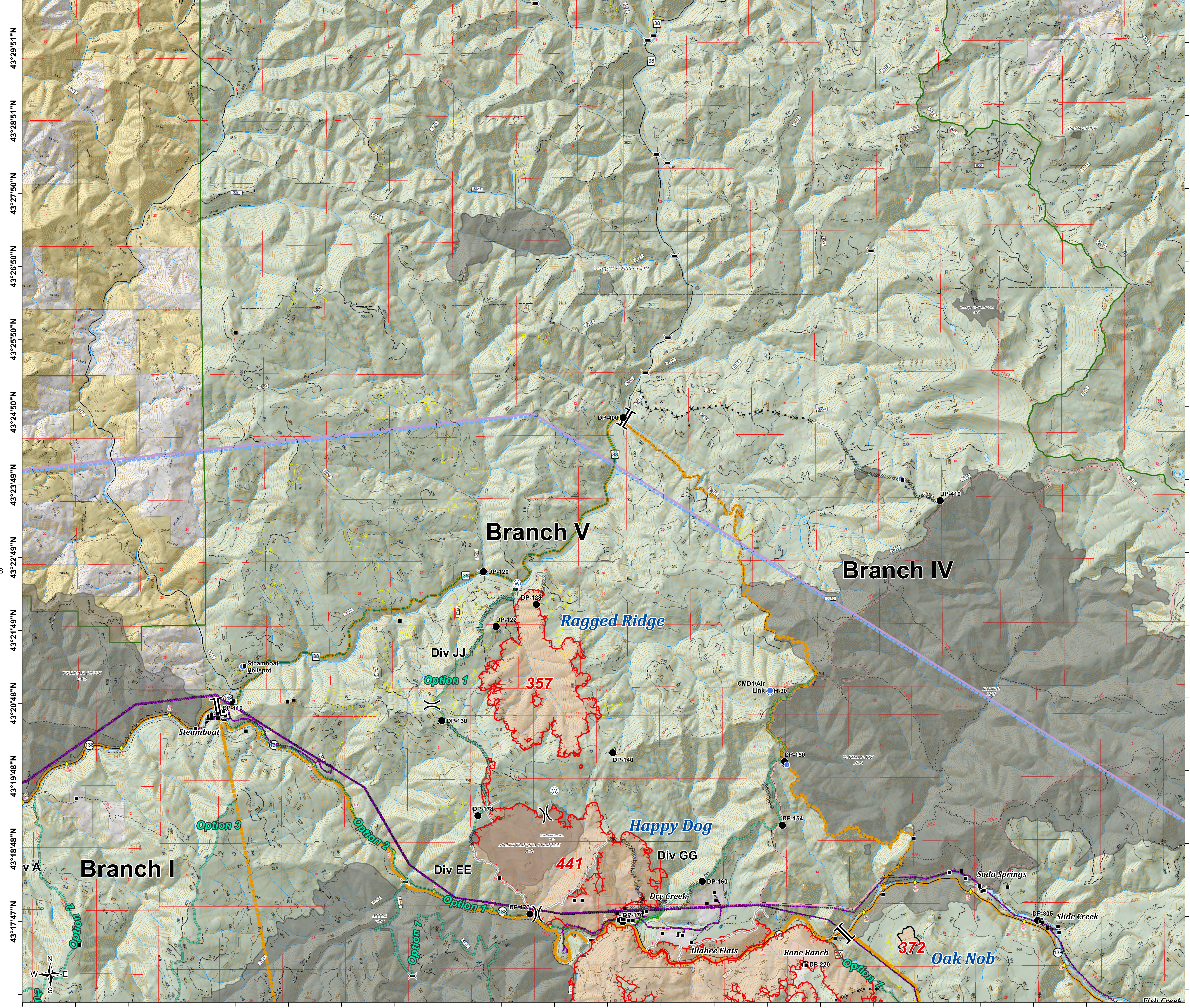
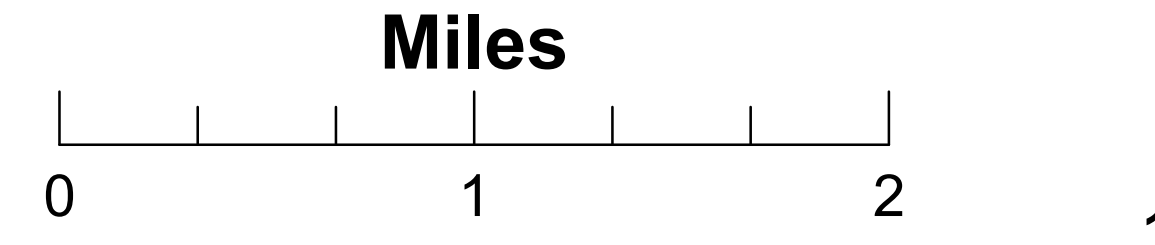


122°46'55"W 122°45'55"W 122°44'55"W 122°43'54"W 122°42'54"W 122°41'54"W 122°40'53"W 122°39'53"W 122°38'53"W 122°37'53"W 122°36'52"W 122°35'52"W 122°34'52"W 122°33'51"W 122°32'51"W 122°31'51"W 122°30'50"W 122°29'50"W 122°28'50"W 122°27'49"W 122°26'49"W

Umpqua North Complex
OR-UPF-000406
August 25, 2017
13,546 Total Acres
as of 8/23 2251 hrs
BRANCH V Expanded

- Drop Point
- Unimproved Landing Area
- Helispot
- Ⓡ Repeater
- Ⓜ Water Source
- ⌋ Division Break
- ⌋ Branch Break
- Ⓟ Parking Area
- Structures
- ▭ TFR
- ◆ Mile Post
- ⌘ Bridge
- Uncontrolled Fire Edge
- Completed Line
- ⊘ Completed Dozer Line
- Completed Hand Line
- ⊘ Proposed Dozer Line
- Escape Route
- Proposed Handline
- Strategic Confinement Options
- Powerline
- Contours 100' Intervals
- Current Fire Perimeter
- ▭ Umpqua North Complex
- ▭ Active Timber Sales
- ▭ Bureau of Land Management
- ▭ Private
- ▭ United States Forest Service
- ▭ National Forest Boundary

Num	Name	Acres
305	DL Dog Prairie	319
320	DL Devil	114
357	Ragged Ridge	1,561
372	Oak Nob	59
380	Fall Creek	2,934
390	NU Twin #3	110
392	Brokentooh	591
393	DL Mudd 2	134
398	Calf Copeland	660
408	NU Twin #4	6
409	NU Twin #1	356
414	DL Mudd	19
441	Happy Dog	6,662
444	DL 444	15
490	Copeland	4
TOTAL		13,546



122°47'55"W 122°46'55"W 122°45'55"W 122°44'55"W 122°43'54"W 122°42'54"W 122°41'54"W 122°40'53"W 122°39'53"W 122°38'53"W 122°37'53"W 122°36'52"W 122°35'52"W 122°34'52"W 122°33'51"W 122°32'51"W 122°31'51"W 122°30'50"W 122°29'50"W 122°28'50"W 122°27'49"W 122°26'49"W