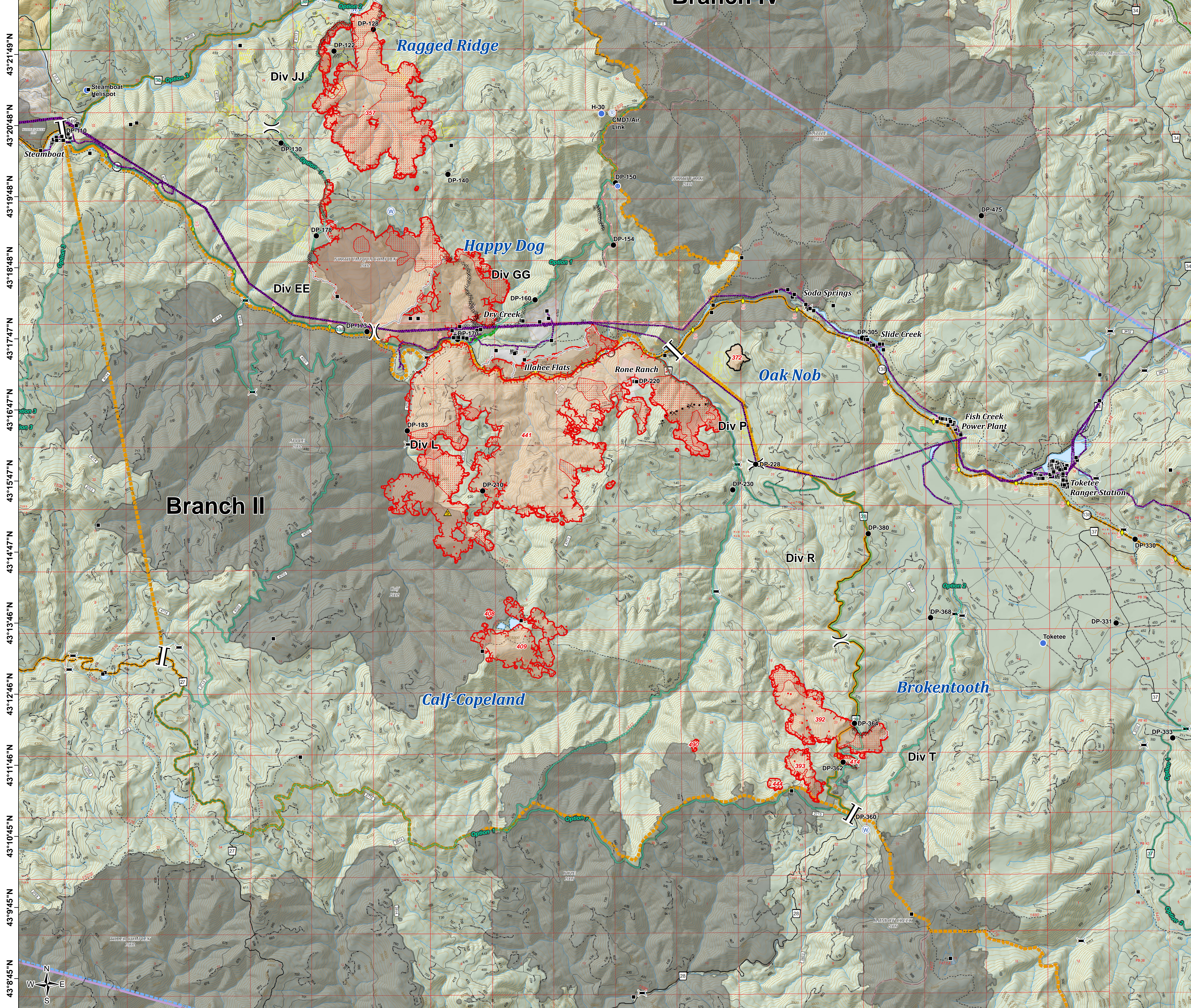


122°44'55"W 122°43'54"W 122°42'54"W 122°41'54"W 122°40'53"W 122°39'53"W 122°38'53"W 122°37'53"W 122°36'52"W 122°35'52"W 122°34'52"W 122°33'51"W 122°32'51"W 122°31'51"W 122°30'50"W 122°29'50"W 122°28'50"W 122°27'49"W 122°26'49"W 122°25'49"W 122°24'49"W 122°23'48"W 122°22'48"W



122°44'55"W 122°43'54"W 122°42'54"W 122°41'54"W 122°40'53"W 122°39'53"W 122°38'53"W 122°37'53"W 122°36'52"W 122°35'52"W 122°34'52"W 122°33'51"W 122°32'51"W 122°31'51"W 122°30'50"W 122°29'50"W 122°28'50"W 122°27'49"W 122°26'49"W 122°25'49"W 122°24'49"W 122°23'48"W 122°22'48"W

Umpqua North Complex
OR-UPF-000406
August 26, 2017
14,817 Total Acres
as of 8/25 2215 hrs
BRANCH II

- IR Isolated Heat
- IR Intense Heat
- IR Scattered Heat
- Drop Point
- Unimproved Landing Area
- Helispot
- Repeater
- ▲ Safety Zone
- Water Source
-) Division Break
-] Branch Break
- Parking Area
- Structures
- TFR
- ◆ Mile Post
- ✕ Bridge
- Uncontrolled Fire Edge
- Completed Line
- Completed Dozer Line
- Completed Hand Line
- Proposed Dozer Line
- Escape Route
- Strategic Confinement Options
- Powerline
- Contours 100' Intervals
- Current Fire Perimeter
- Umpqua North Complex
- Active Timber Sales
- Bureau of Land Management
- Private
- United States Forest Service
- National Forest Boundary

Num	Name	Acres
305	Dog Prairie	330
320	Devil	115
357	Ragged Ridge	1,738
372	Oak Nob	59
380	Fall Creek	3,184
392	Brokentooth	658
393	Mudd 2	138
408	Twin #4	6
409	Twin #1	477
414	Mudd	19
441	Happy Dog	8,068
444	444	18
490	Copeland	7
Total		14,817

