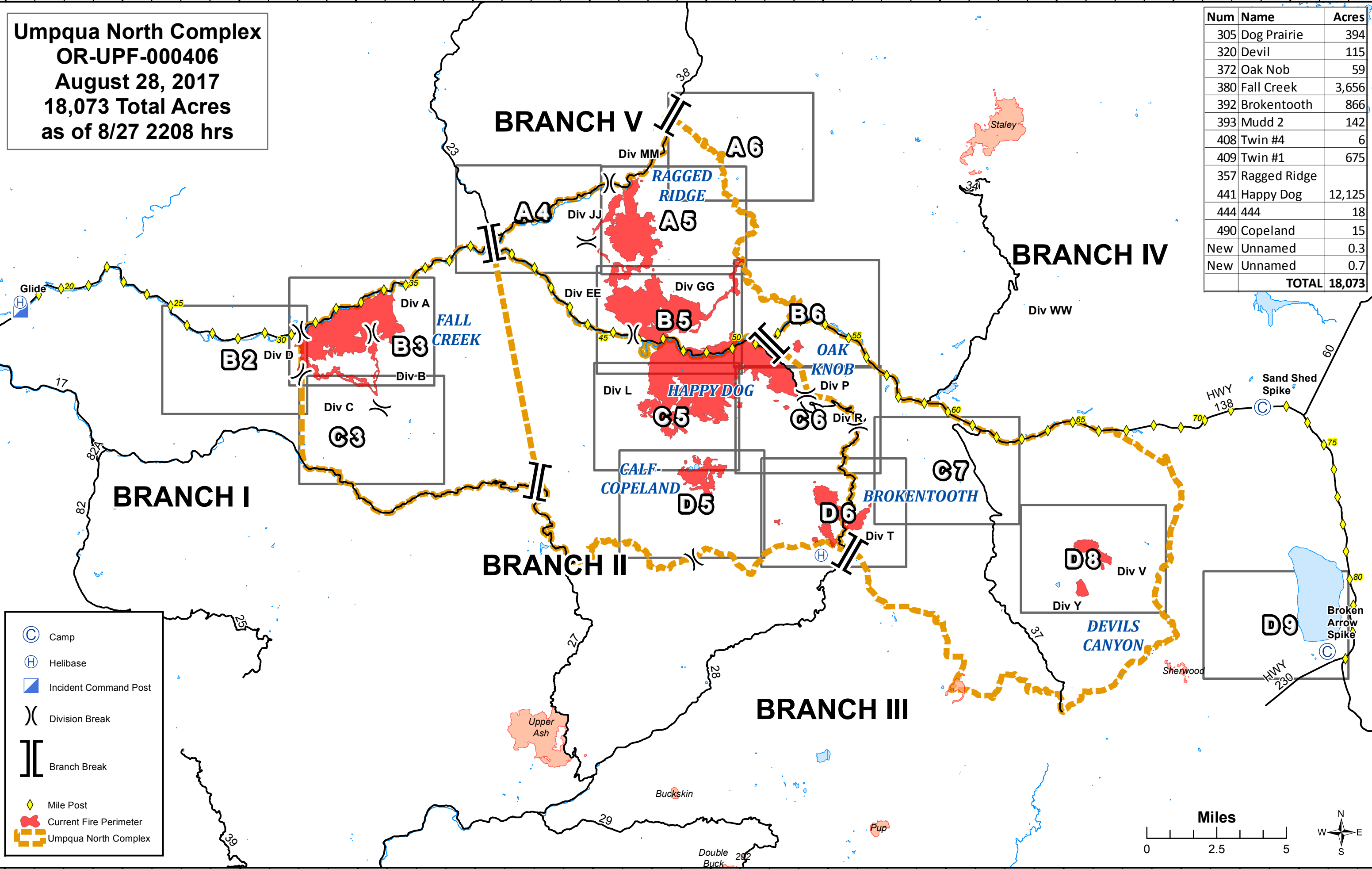
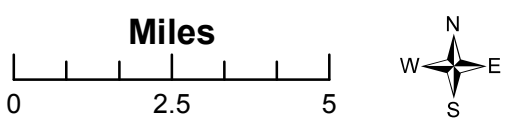


Umpqua North Complex
OR-UPF-000406
August 28, 2017
18,073 Total Acres
as of 8/27 2208 hrs

Num	Name	Acres
305	Dog Prairie	394
320	Devil	115
372	Oak Nob	59
380	Fall Creek	3,656
392	Broketooth	866
393	Mudd 2	142
408	Twin #4	6
409	Twin #1	675
357	Ragged Ridge	
441	Happy Dog	12,125
444	444	18
490	Copeland	15
New	Unnamed	0.3
New	Unnamed	0.7
TOTAL		18,073



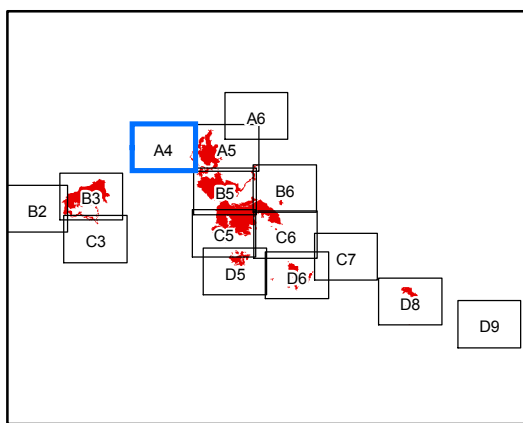
- Camp
- Helibase
- Incident Command Post
- Division Break
- Branch Break
- Mile Post
- Current Fire Perimeter
- Umpqua North Complex



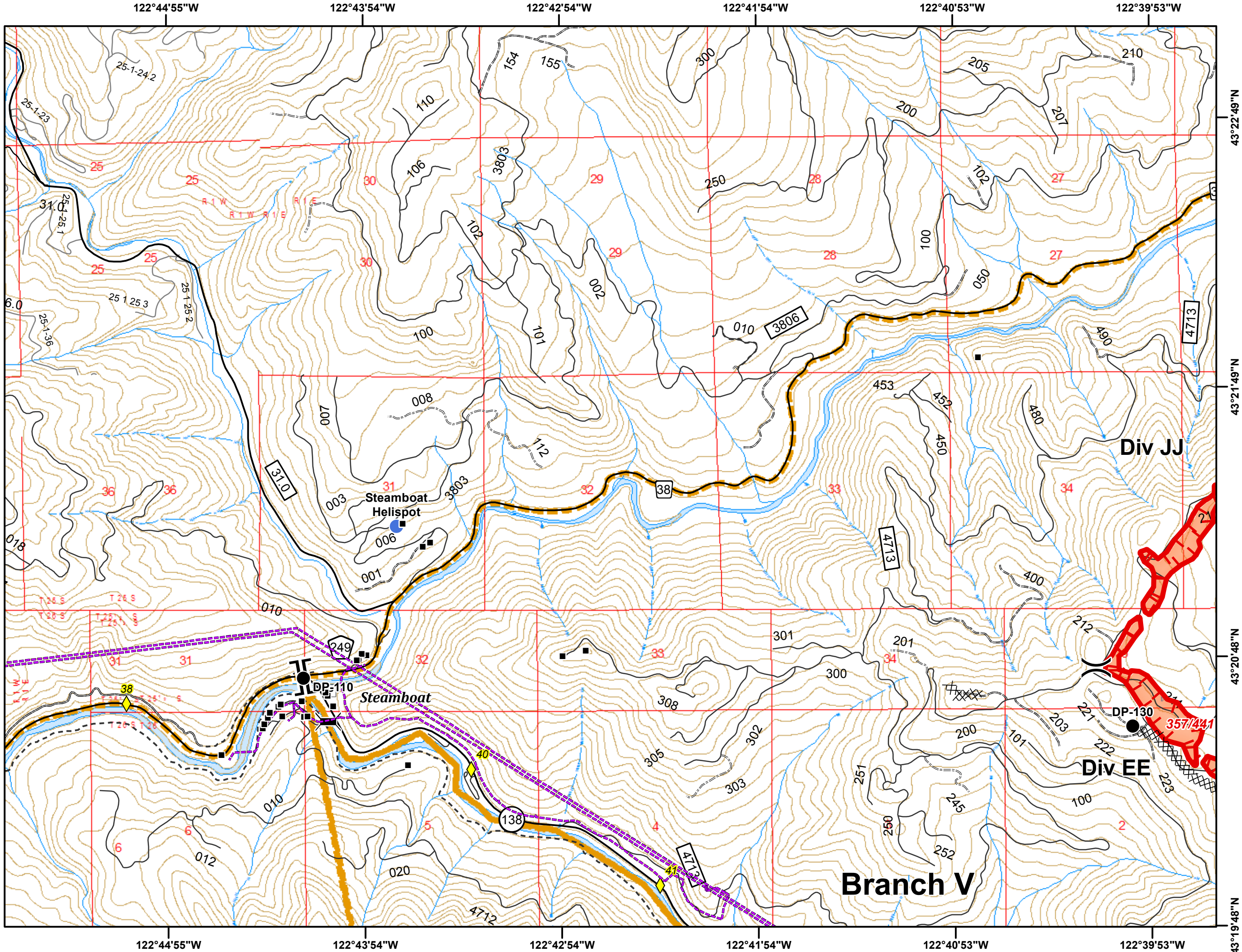
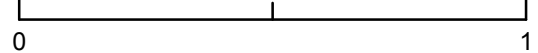
Umpqua North Complex
OR-UPF-000406
8/28/2017
18,073 Total Acres
as of 8/27 2208 hrs
A4
1:24,000
NAD 83 UTM Zone 10N



- Mile Post
- Structure
- Bridge
- Drop Point
- Helispot
- Division Break
- Branch Break
- Parking Area
- Uncontrolled Fire Edge
- Completed Dozer Line
- Powerline
- Umpqua North Complex



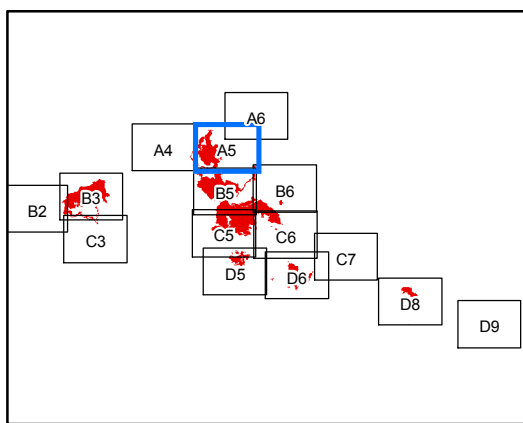
Miles



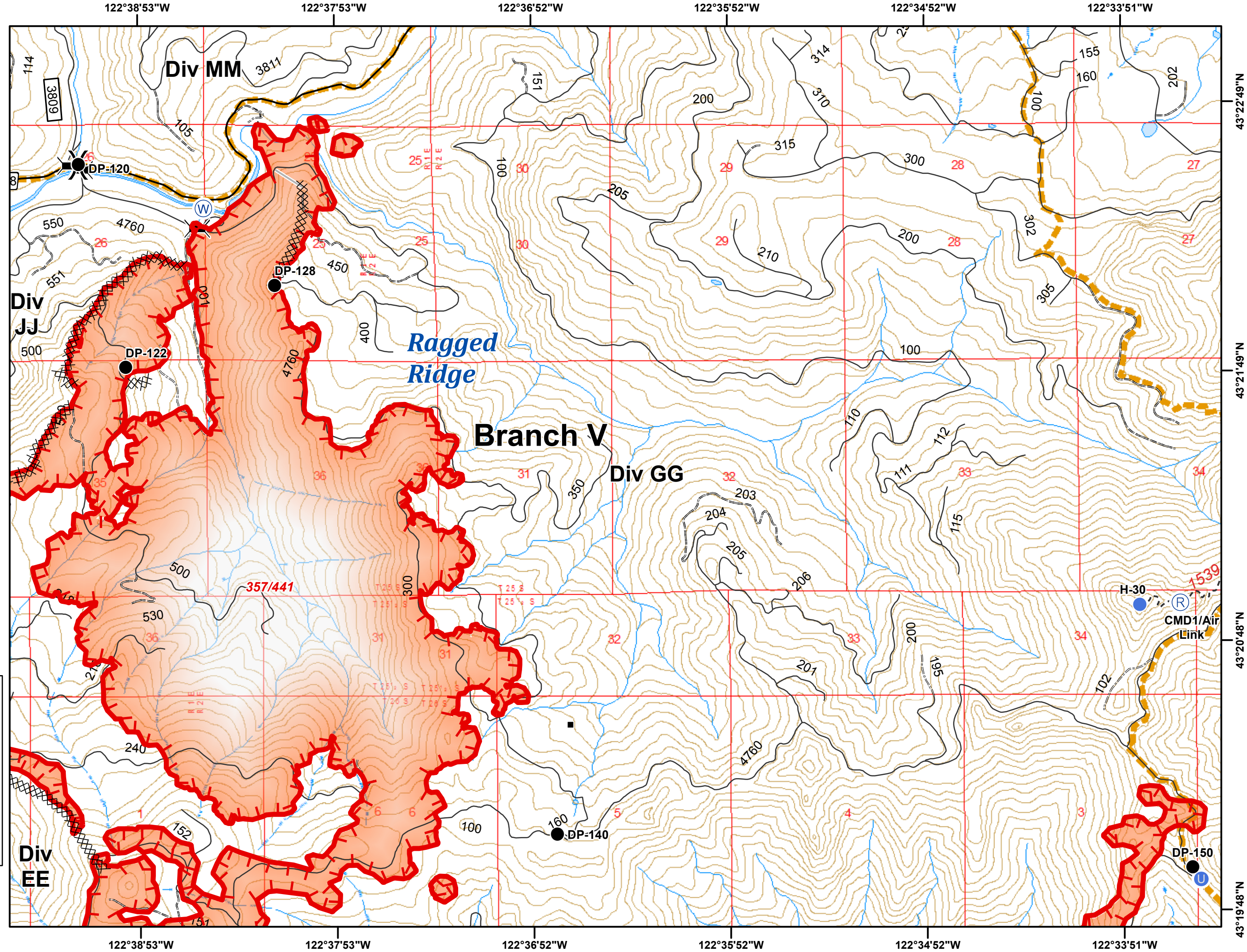
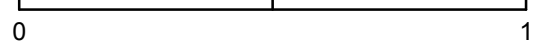
Umpqua North Complex
OR-UPF-000406
8/28/2017
18,073 Total Acres
as of 8/27 2208 hrs
A5
1:24,000
NAD 83 UTM Zone 10N



- Structure
- ≡ Bridge
- Drop Point
- ⊕ Unimproved Landing Area
- Helispot
- Ⓡ Repeater
- Ⓜ Water Source
- ⌋ Division Break
- └─ Uncontrolled Fire Edge
- XXXX Completed Dozer Line
- Completed Hand Line
- ▣ Umpqua North Complex



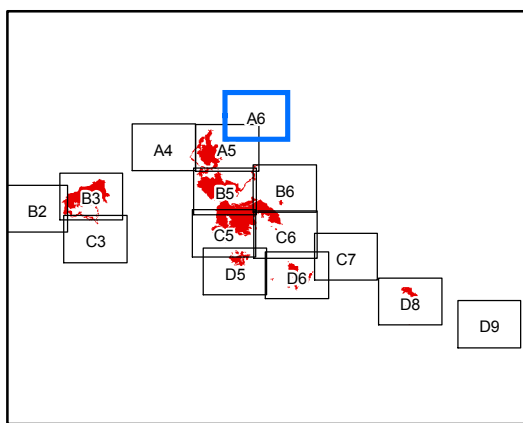
Miles



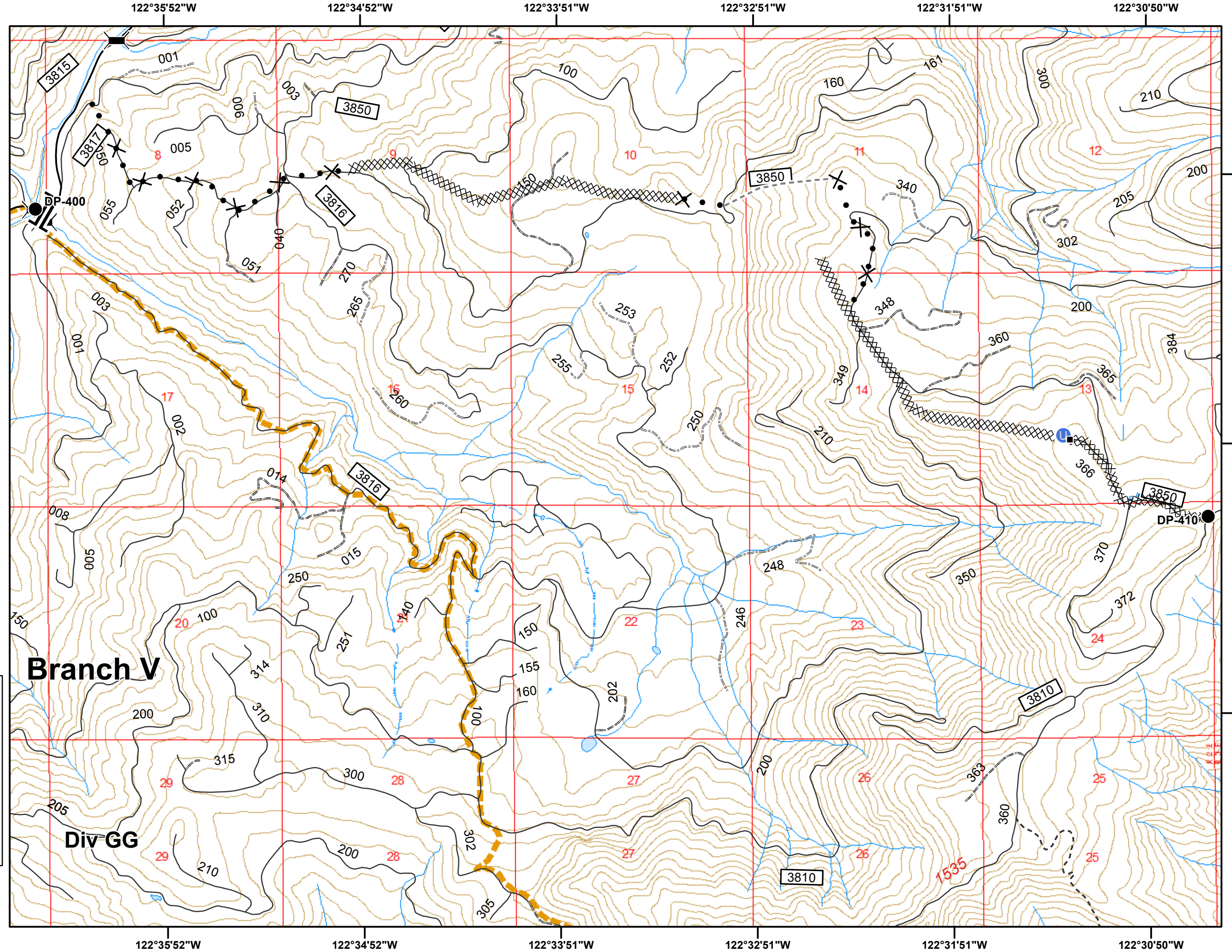
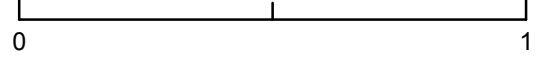
Umpqua North Complex
OR-UPF-000406
8/28/2017
18,073 Total Acres
as of 8/27 2208 hrs
A6
1:24,000
NAD 83 UTM Zone 10N



- Structure
- ⌵ Bridge
- Drop Point
- ⊕ Unimproved Landing Area
- || Branch Break
- XXXXX Completed Dozer Line
- ⌵ ● Proposed Dozer Line
- Proposed Handline
- ▭ Umpqua North Complex



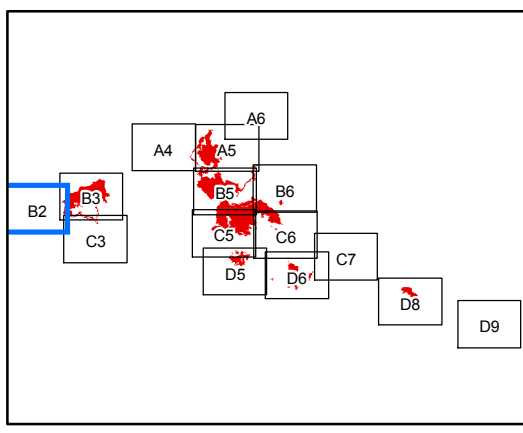
Miles



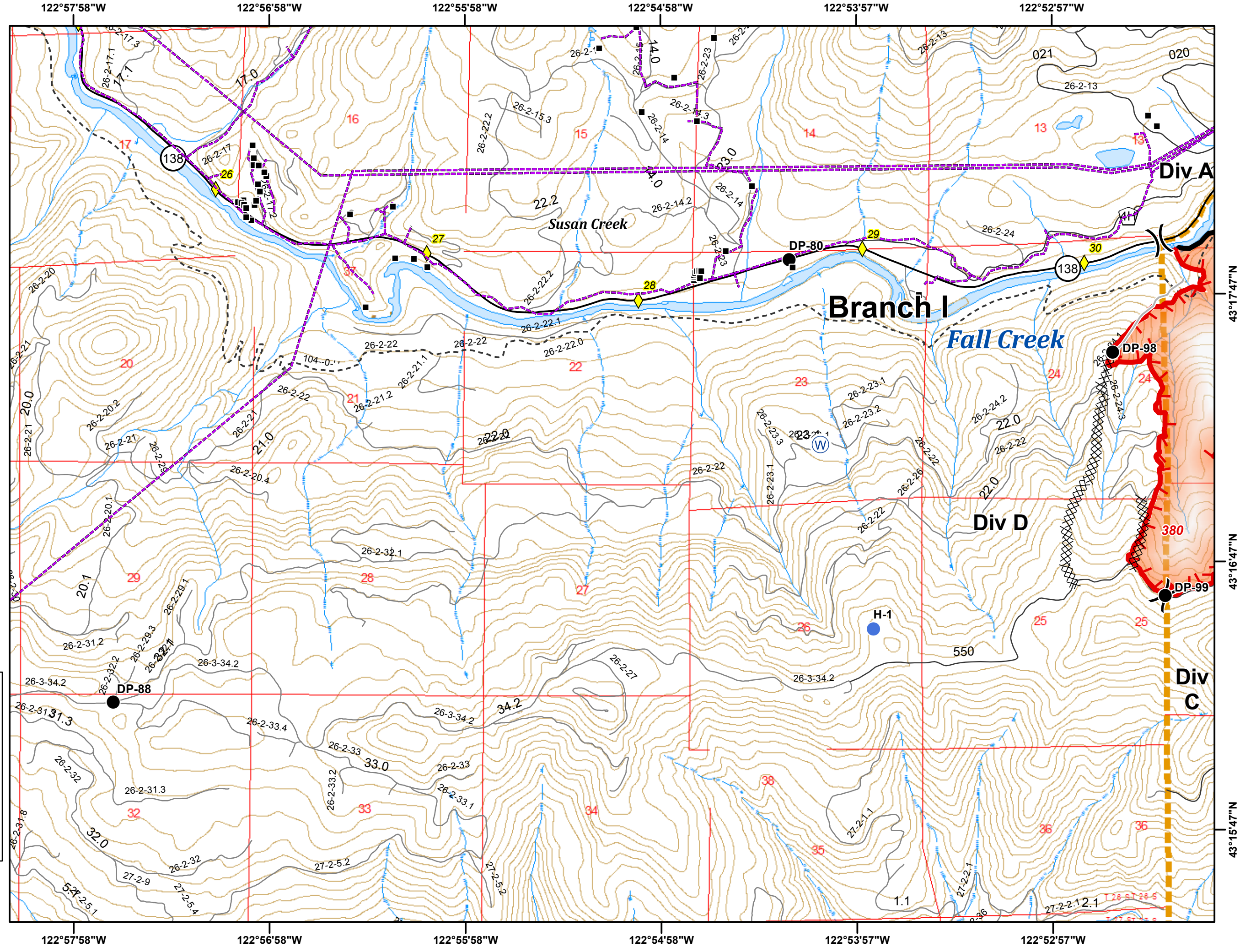
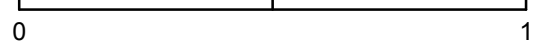
Umpqua North Complex
OR-UPF-000406
8/28/2017
18,073 Total Acres
as of 8/27 2208 hrs
B2
1:24,000
NAD 83 UTM Zone 10N



- Mile Post
- Structure
- Drop Point
- Helispot
- Water Source
- Division Break
- Uncontrolled Fire Edge
- Completed Line
- Completed Dozer Line
- Completed Hand Line
- Powerline
- Umpqua North Complex



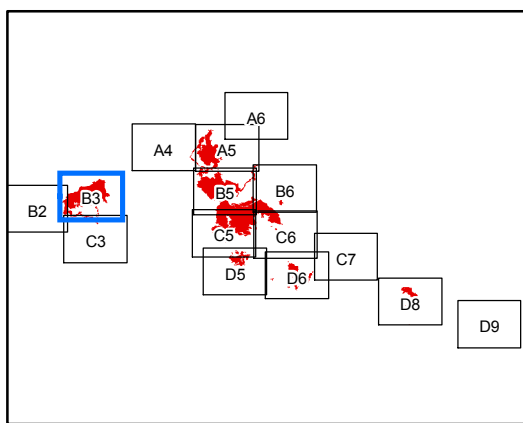
Miles



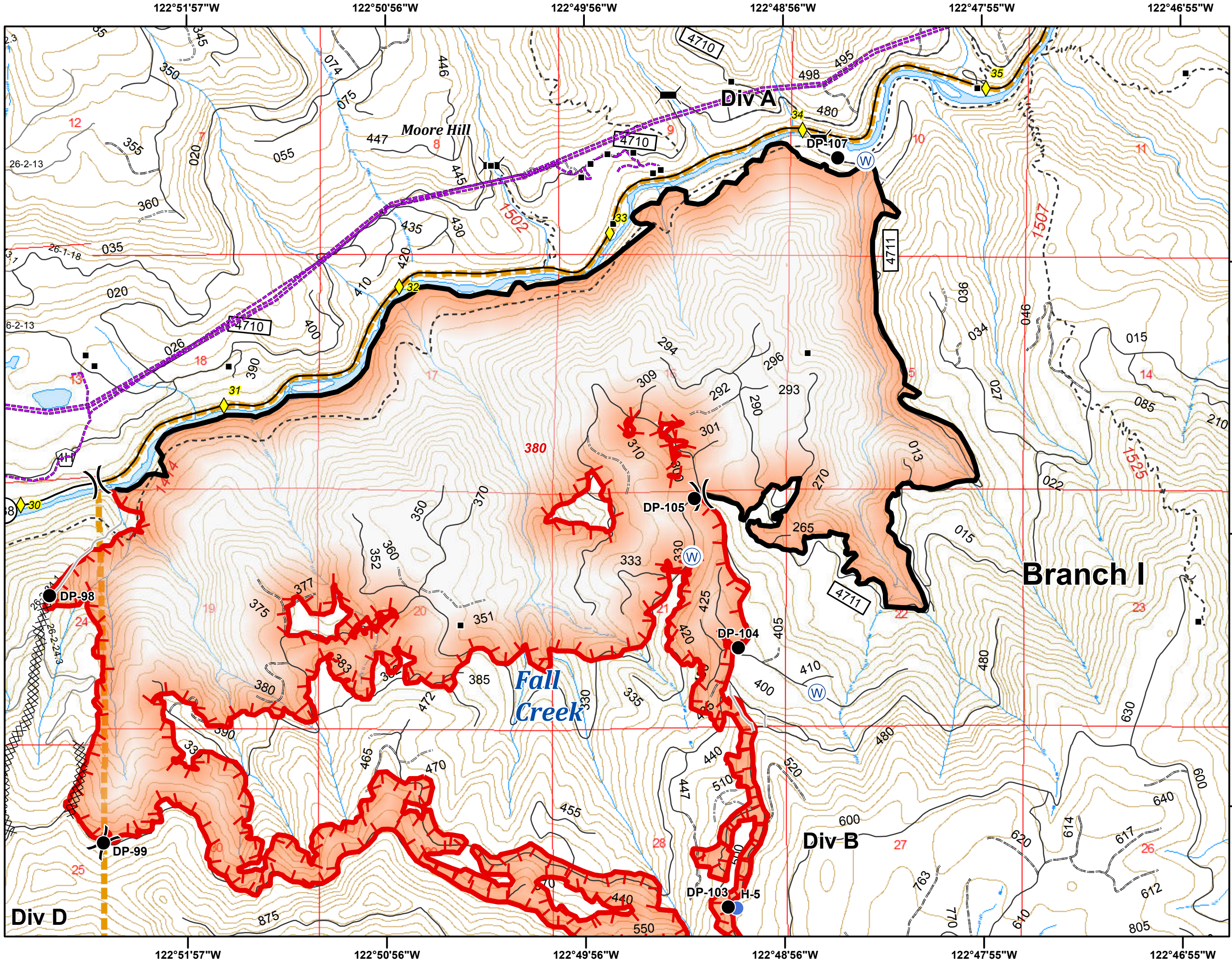
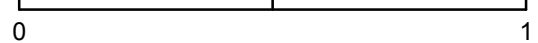
Umpqua North Complex
OR-UPF-000406
8/28/2017
18,073 Total Acres
as of 8/27 2208 hrs
B3
1:24,000
NAD 83 UTM Zone 10N



- Mile Post
- Structure
- Bridge
- Drop Point
- Helispot
- Spot Fire
- Water Source
- Division Break
- Uncontrolled Fire Edge
- Completed Line
- Completed Dozer Line
- Completed Hand Line
- Powerline
- Umpqua North Complex



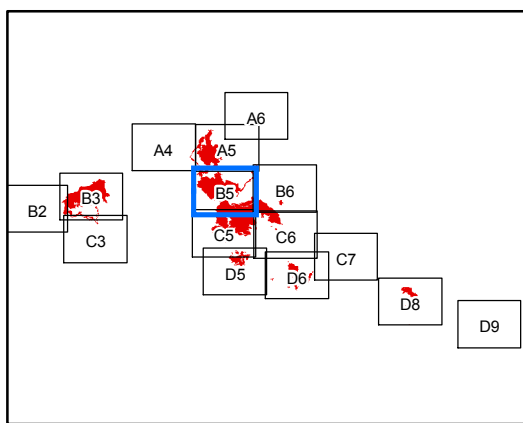
Miles



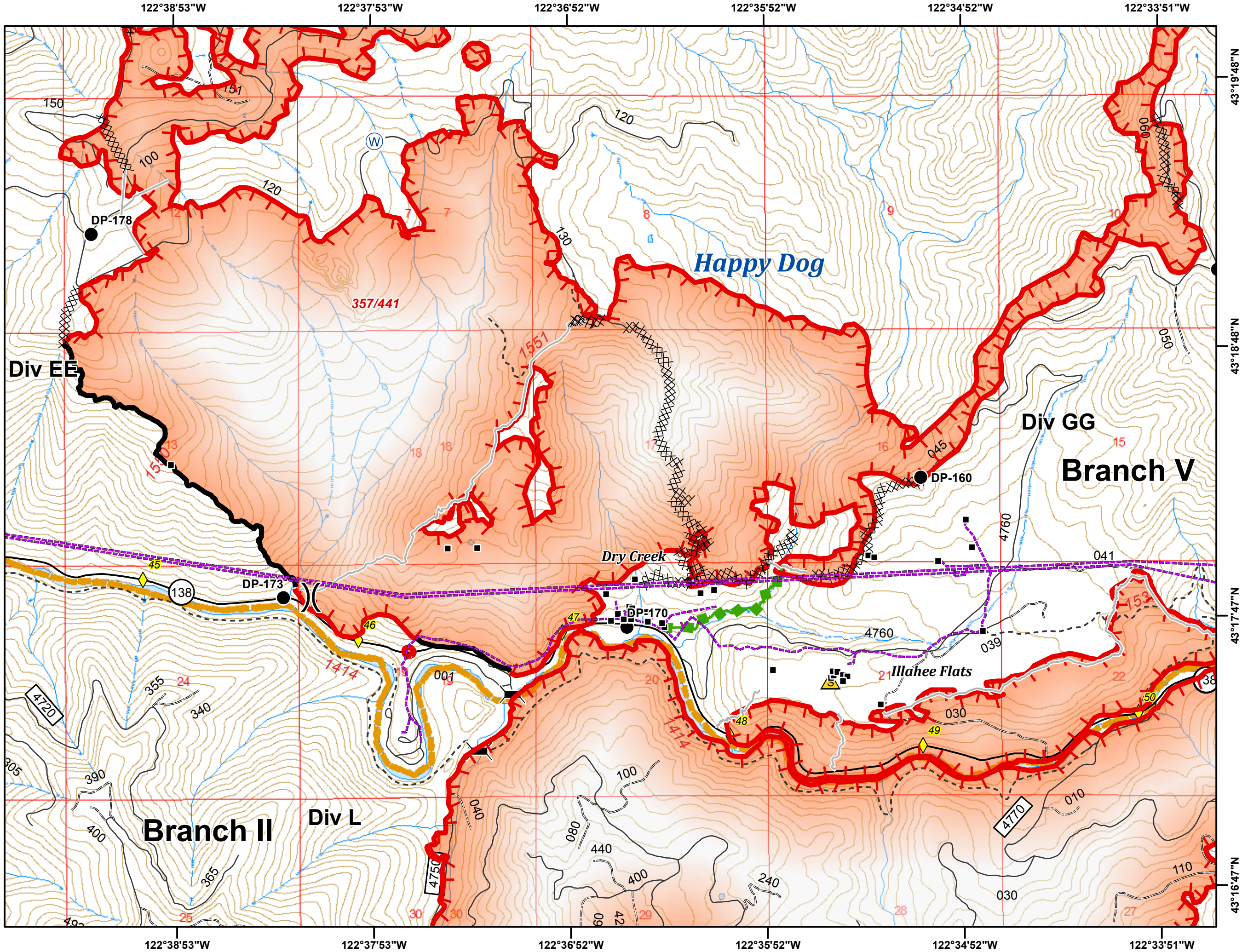
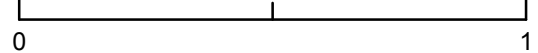
Umpqua North Complex
OR-UPF-000406
8/28/2017
18,073 Total Acres
as of 8/27 2208 hrs
B5
1:24,000
NAD 83 UTM Zone 10N



- Mile Post
- Structure
- Bridge
- Drop Point
- Safety Zone
- Water Source
- Division Break
- Uncontrolled Fire Edge
- Completed Line
- Completed Dozer Line
- Completed Hand Line
- Escape Route
- Powerline
- Umpqua North Complex



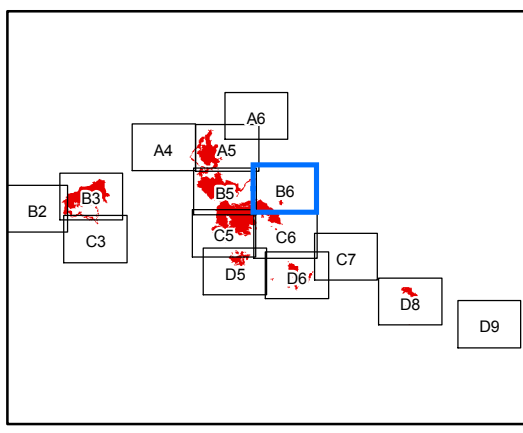
Miles



Umpqua North Complex
OR-UPF-000406
8/28/2017
18,073 Total Acres
as of 8/27 2208 hrs
B6
1:24,000
NAD 83 UTM Zone 10N

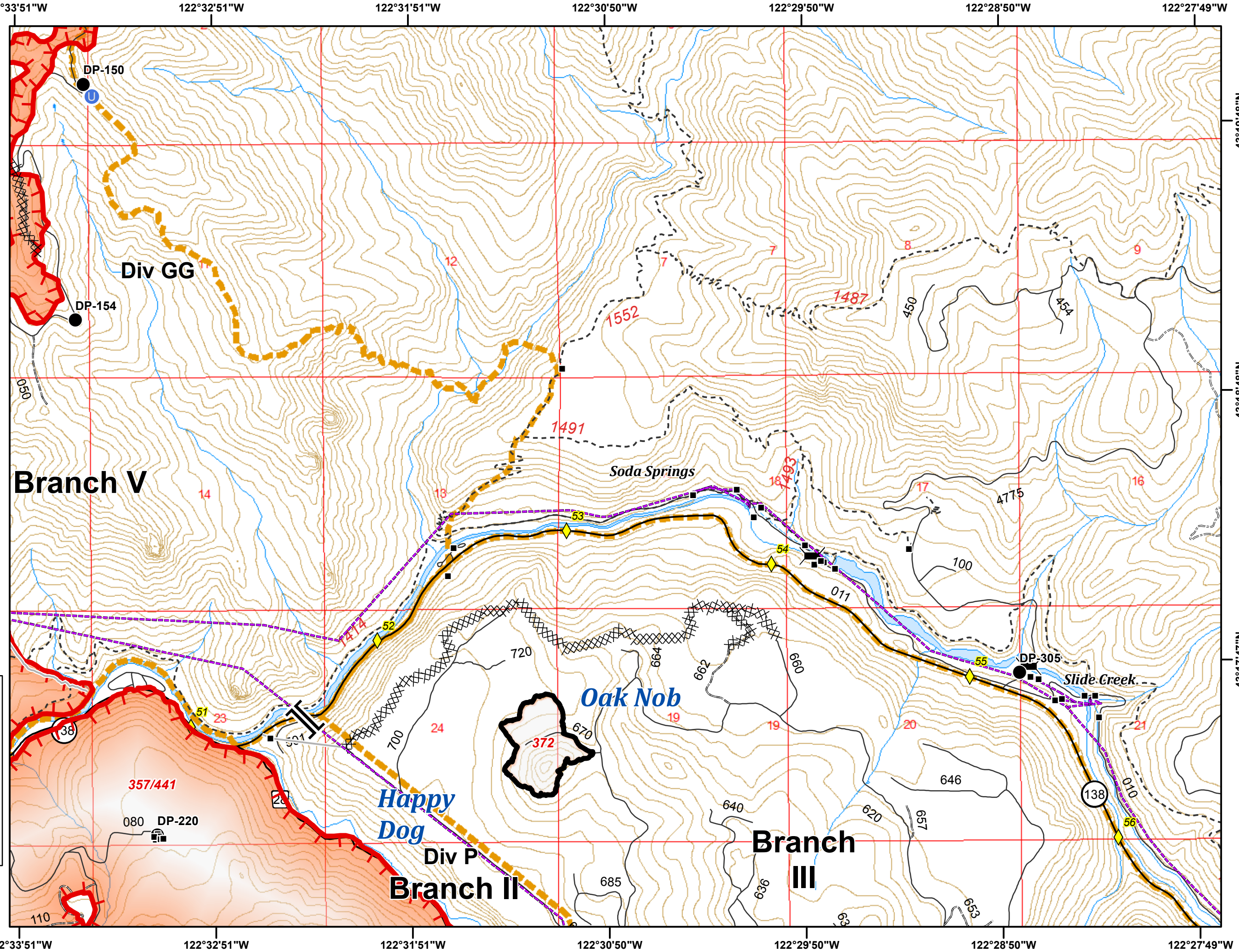


- Mile Post
- Structure
- Bridge
- Drop Point
- Unimproved Landing Area
- Branch Break
- Uncontrolled Fire Edge
- Completed Line
- Completed Dozer Line
- Completed Hand Line
- Powerline
- Umpqua North Complex



Miles

0 1



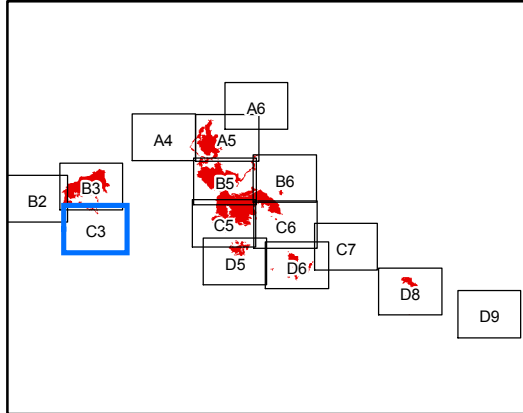
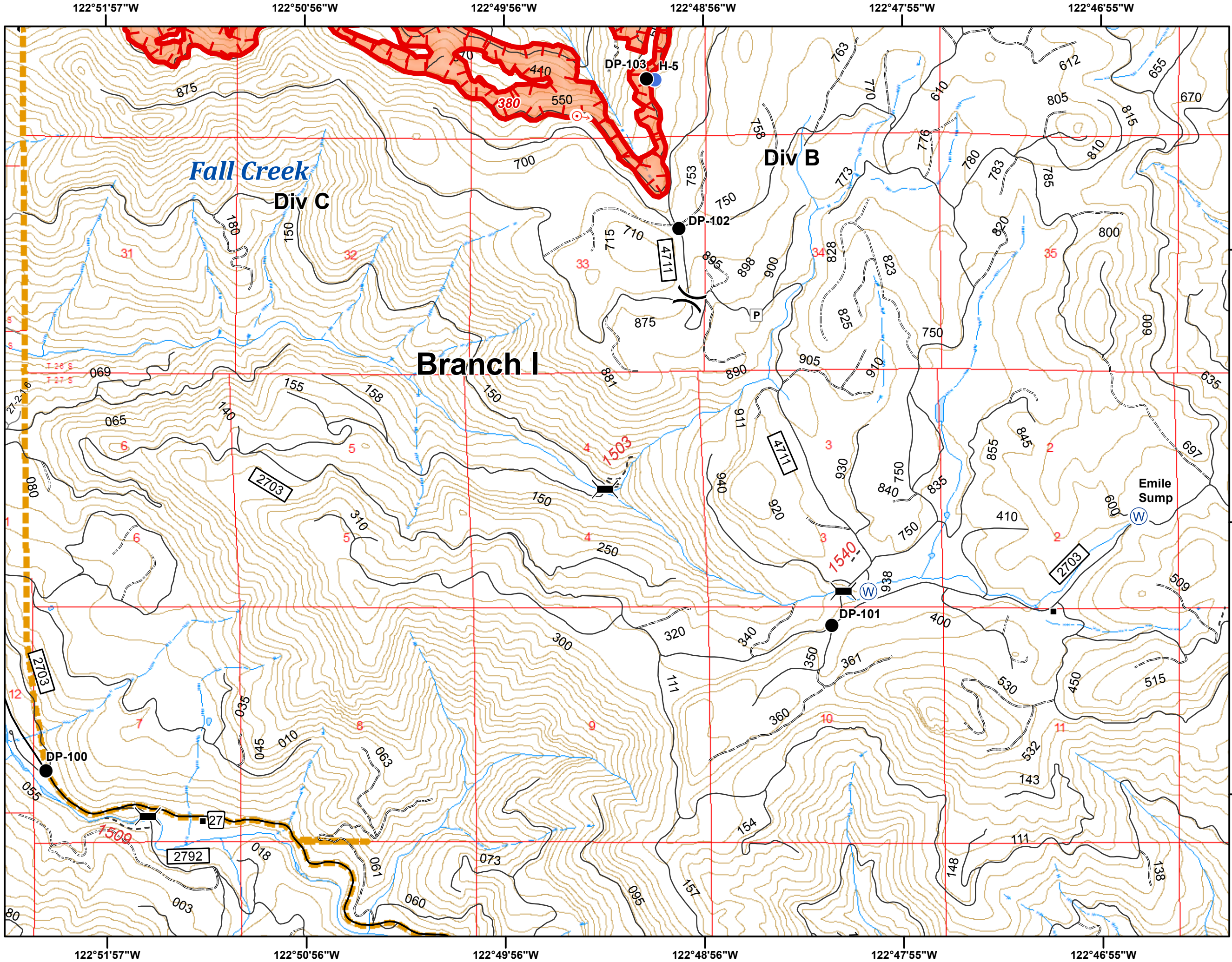
122°33'51"W 122°32'51"W 122°31'51"W 122°30'50"W 122°29'50"W 122°28'50"W 122°27'49"W

43°19'48"N 43°18'48"N 43°17'47"N

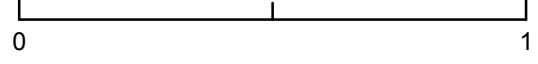
Umpqua North Complex
OR-UPF-000406
8/28/2017
18,073 Total Acres
as of 8/27 2208 hrs
C3
1:24,000
NAD 83 UTM Zone 10N



- Structure
- ⌒ Bridge
- Drop Point
- Helispot
- ⊕ Spot Fire
- ⊙ Water Source
- ⌒ Division Break
- Ⓟ Parking Area
- ▬ Uncontrolled Fire Edge
- ▬ Umpqua North Complex



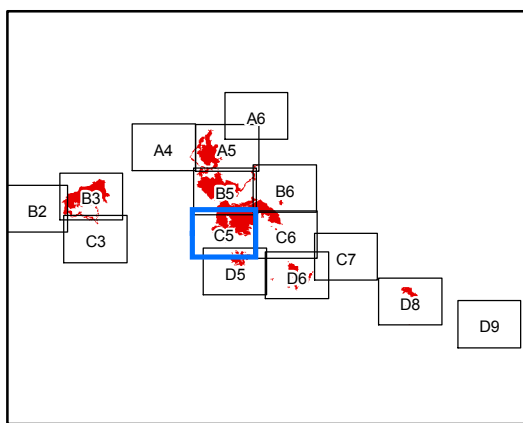
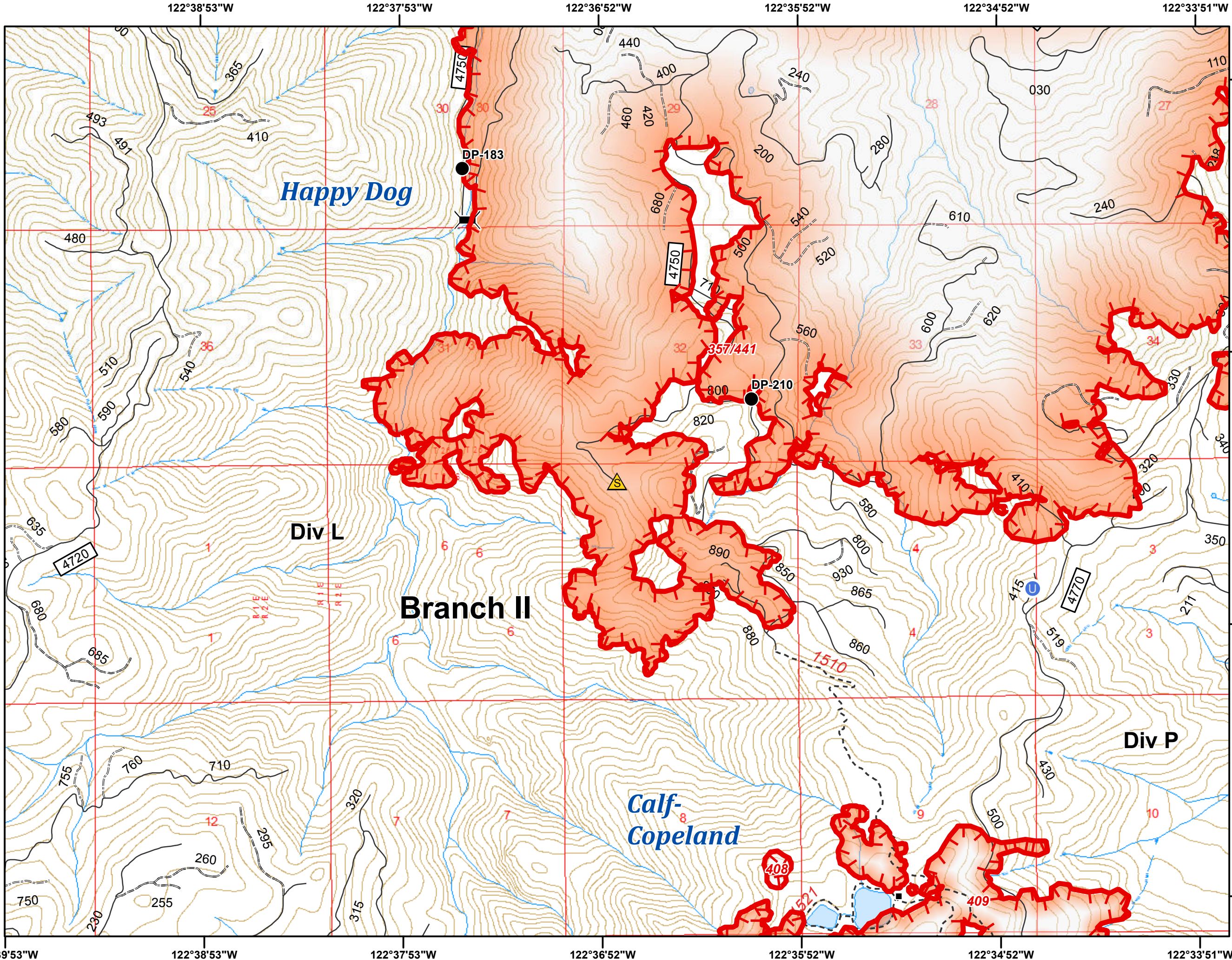
Miles



Umpqua North Complex
OR-UPF-000406
8/28/2017
18,073 Total Acres
as of 8/27 2208 hrs
C5
1:24,000
NAD 83 UTM Zone 10N



- Structure
- ▬ Bridge
- Drop Point
- ⊕ Unimproved Landing Area
- ⚠ Safety Zone
- ⚡ Uncontrolled Fire Edge
- 📦 Umpqua North Complex





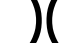





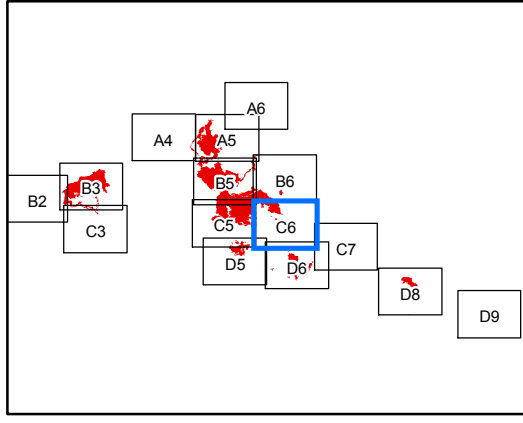
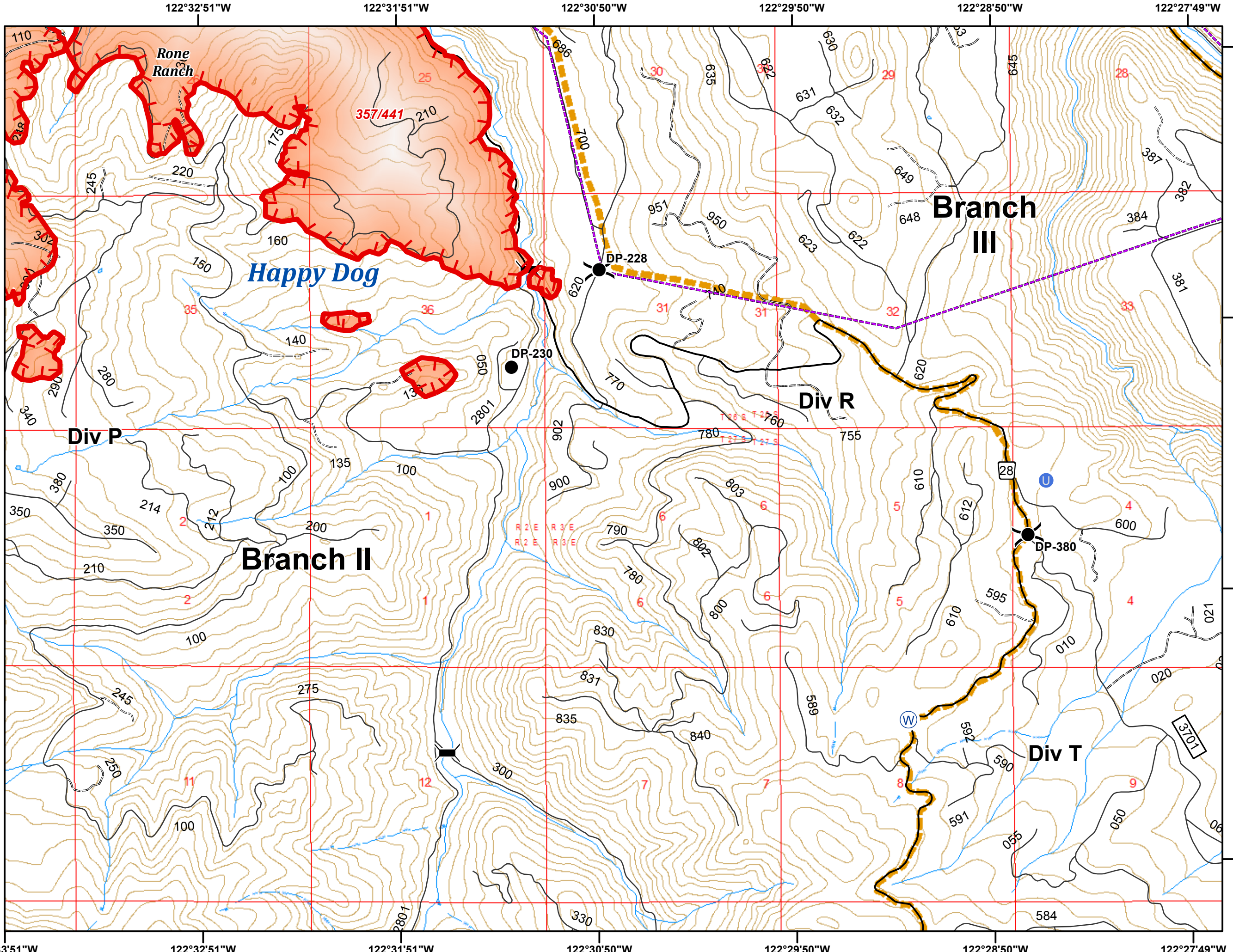
Miles

0 1
 122°39'53"W 122°38'53"W 122°37'53"W 122°36'52"W 122°35'52"W 122°34'52"W 122°33'51"W
 43°13'46"N 43°14'47"N 43°15'47"N 43°16'47"N

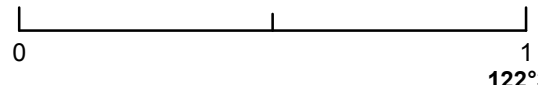
Umpqua North Complex
OR-UPF-000406
8/28/2017
18,073 Total Acres
as of 8/27 2208 hrs
C6
1:24,000
NAD 83 UTM Zone 10N



-  Bridge
-  Drop Point
-  Unimproved Landing Area
-  Water Source
-  Division Break
-  Uncontrolled Fire Edge
-  Powerline
-  Umpqua North Complex









Miles

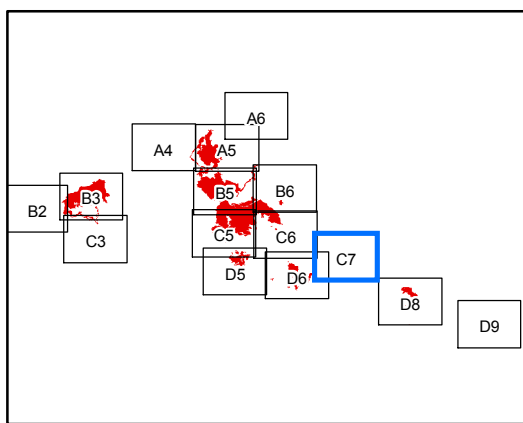
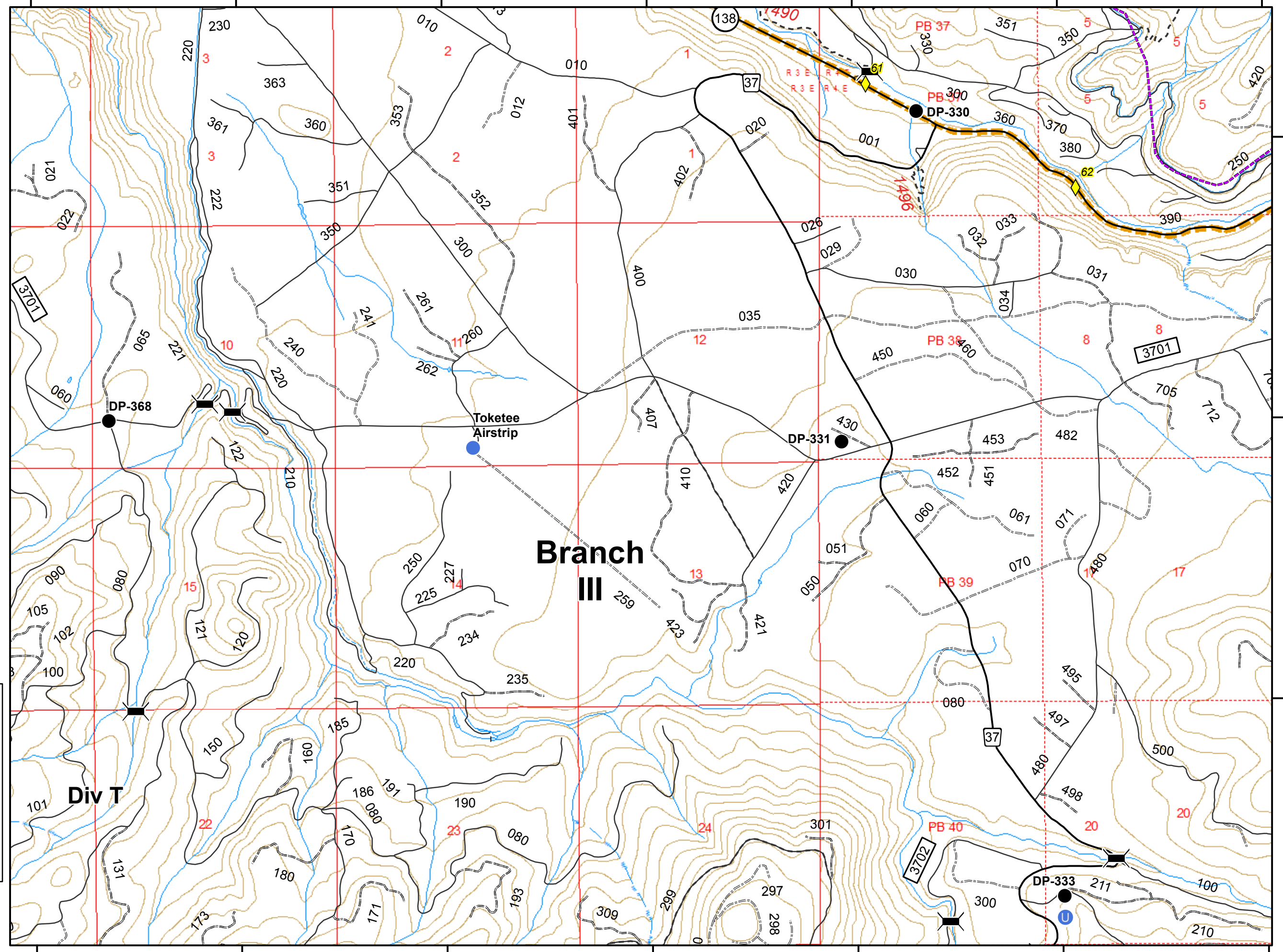


122°27'49"W 122°26'49"W 122°25'49"W 122°24'49"W 122°23'48"W 122°22'48"W 122°21'48"W

Umpqua North Complex
OR-UPF-000406
8/28/2017
18,073 Total Acres
as of 8/27 2208 hrs
C7
1:24,000
NAD 83 UTM Zone 10N



-  Mile Post
-  Bridge
-  Drop Point
-  Unimproved Landing Area
-  Helispot
-  Powerline
-  Umpqua North Complex



Miles

0 1

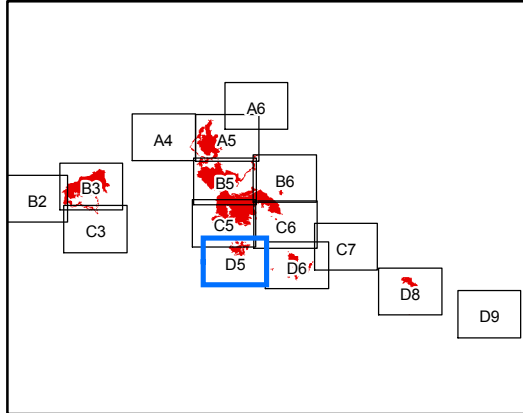
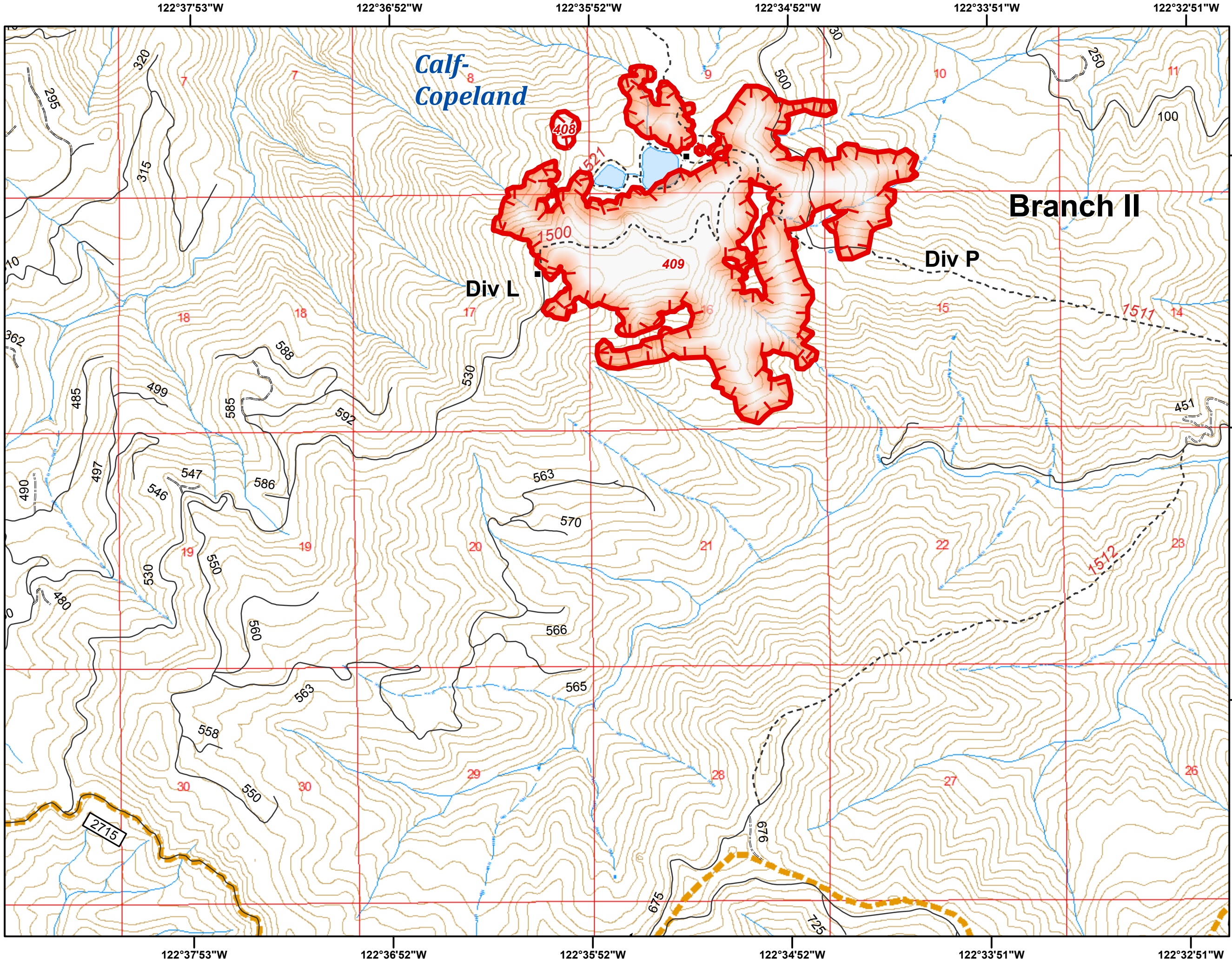
122°27'49"W 122°26'49"W 122°25'49"W 122°24'49"W 122°23'48"W 122°22'48"W 122°21'48"W

43°14'47"N
43°13'46"N
43°12'46"N

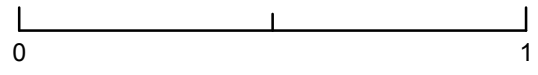
Umpqua North Complex
OR-UPF-000406
8/28/2017
18,073 Total Acres
as of 8/27 2208 hrs
D5
1:24,000
NAD 83 UTM Zone 10N



- Structure
-) Division Break
- Uncontrolled Fire Edge
- Umpqua North Complex



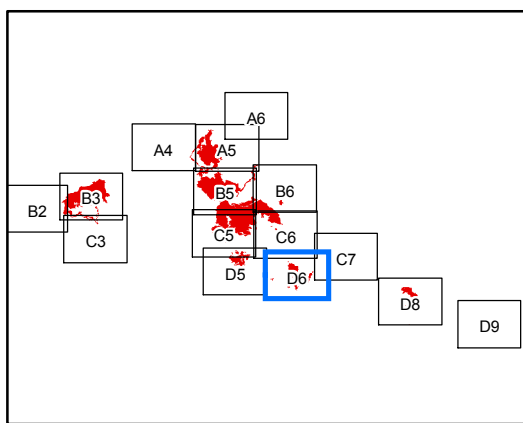
Miles



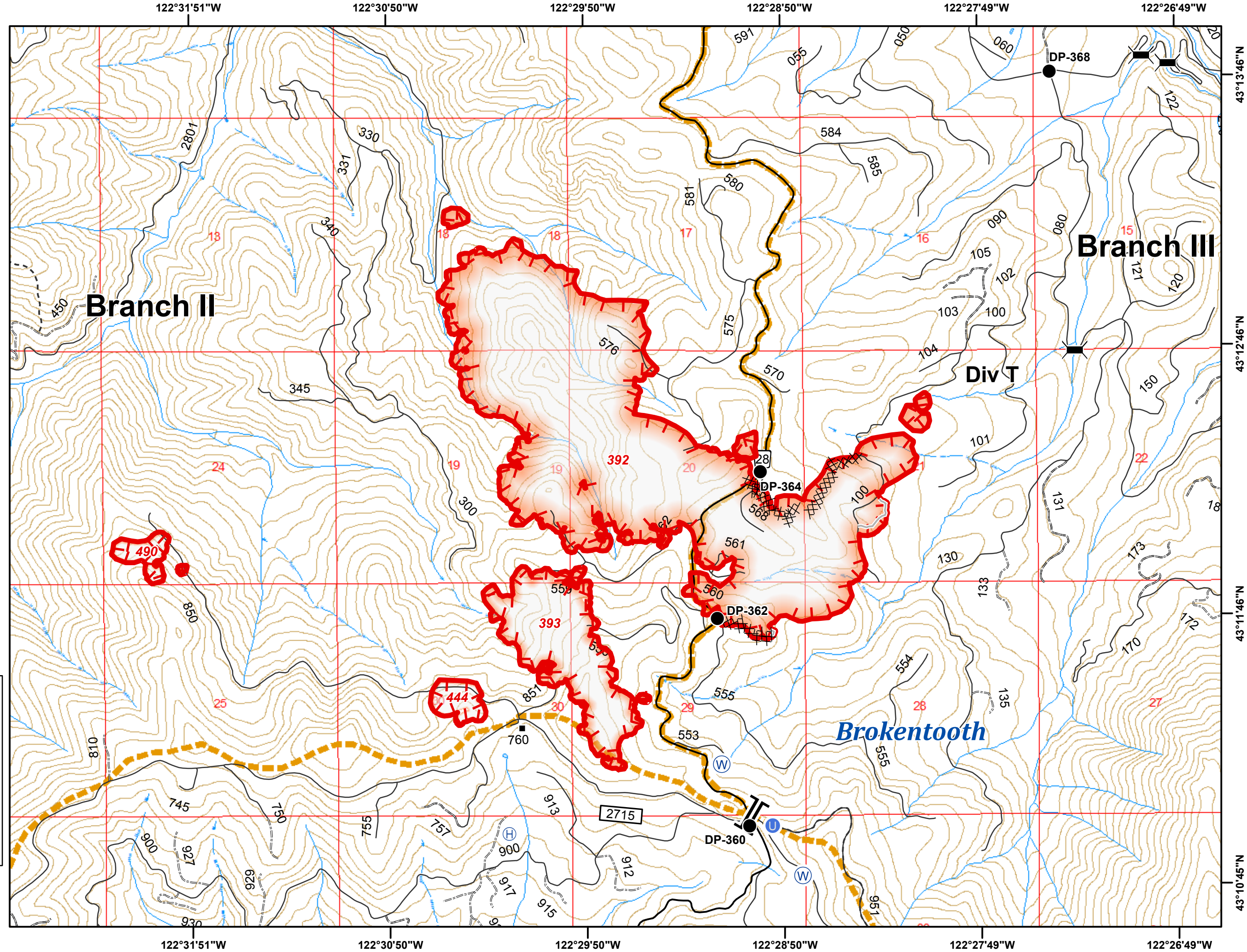
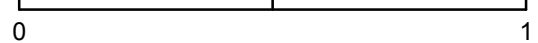
Umpqua North Complex
OR-UPF-000406
8/28/2017
18,073 Total Acres
as of 8/27 2208 hrs
D6
1:24,000
NAD 83 UTM Zone 10N



- Structure
- ⌵ Bridge
- Drop Point
- ⊕ Helibase
- ⊖ Unimproved Landing Area
- ⊙ Water Source
- || Branch Break
- ┌ Uncontrolled Fire Edge
- XXXX Completed Dozer Line
- Completed Hand Line
- ▭ Umpqua North Complex



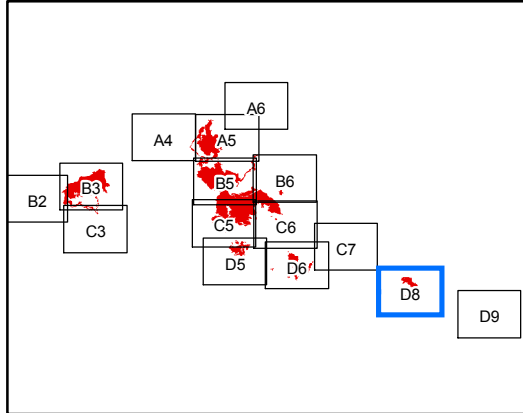
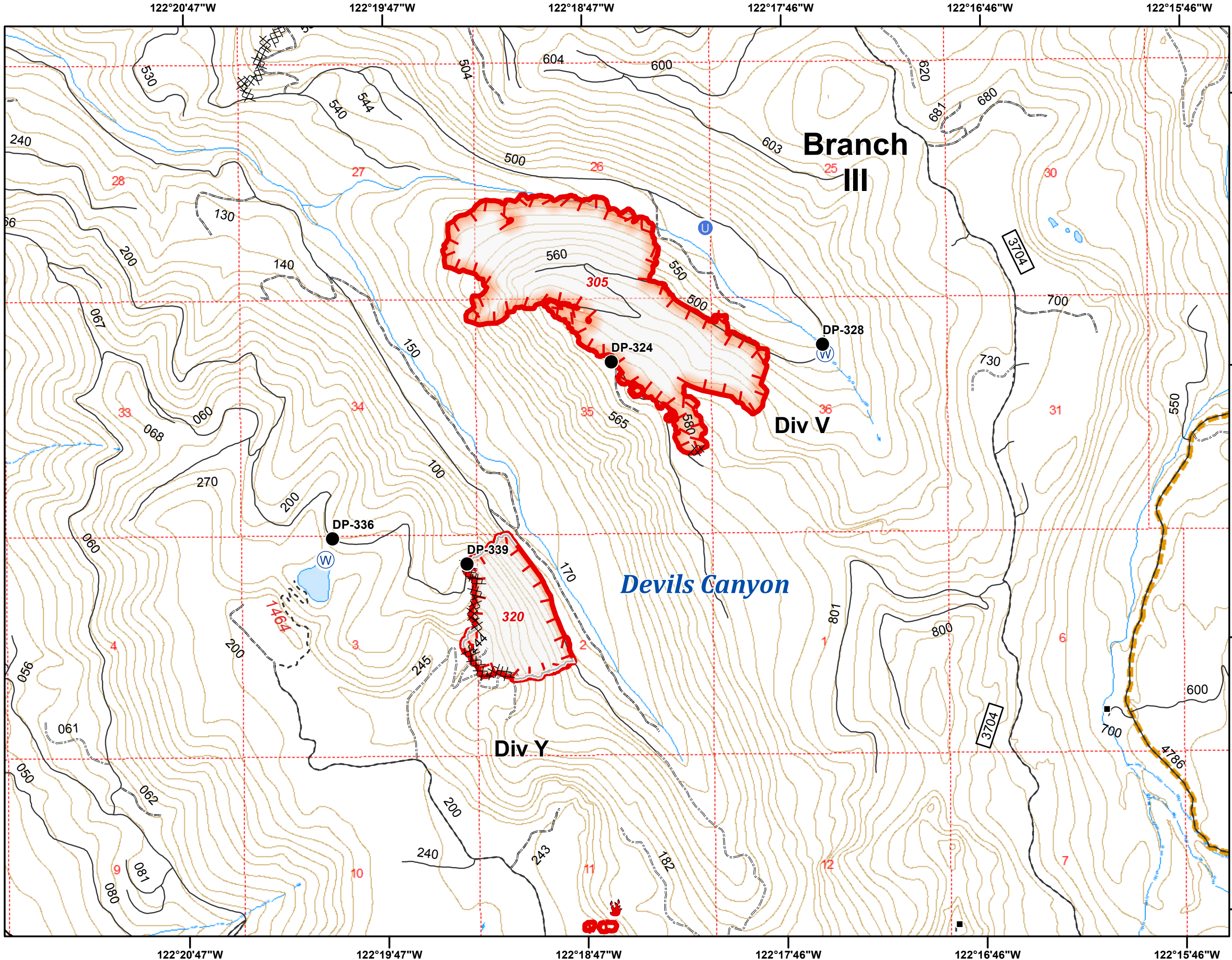
Miles



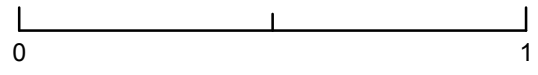
Umpqua North Complex
OR-UPF-000406
8/28/2017
18,073 Total Acres
as of 8/27 2208 hrs
D8
1:24,000
NAD 83 UTM Zone 10N



- Structure
- Drop Point
- U Unimproved Landing Area
- W Water Source
- 🔥 Fire Location
- ┌ Uncontrolled Fire Edge
- XXXXX Completed Dozer Line
- Completed Hand Line
- ▣ Umpqua North Complex







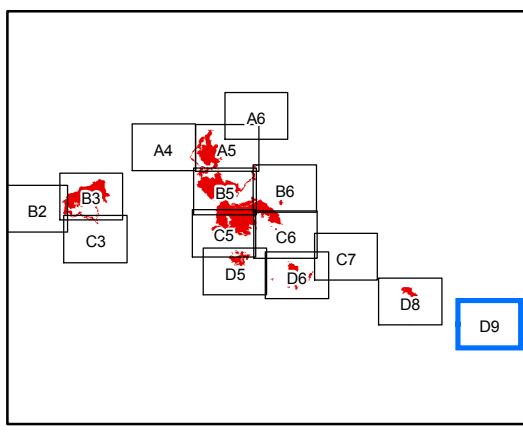
Miles



Umpqua North Complex
OR-UPF-000406
8/28/2017
18,073 Total Acres
as of 8/27 2208 hrs
D9
1:24,000
NAD 83 UTM Zone 10N



-  Mile Post
-  Structure
-  Camp
-  Helispot
-  Repeater



Miles

