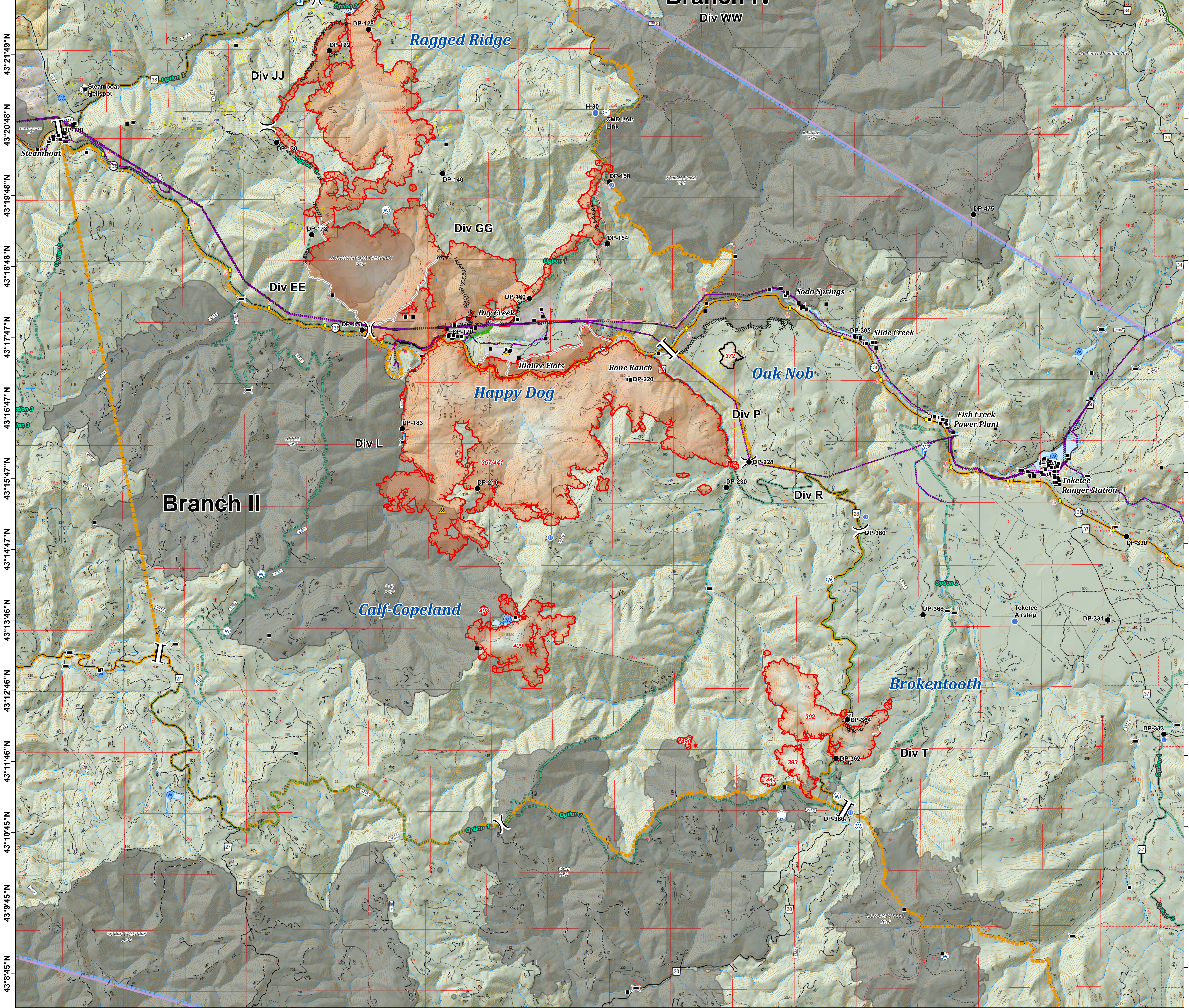
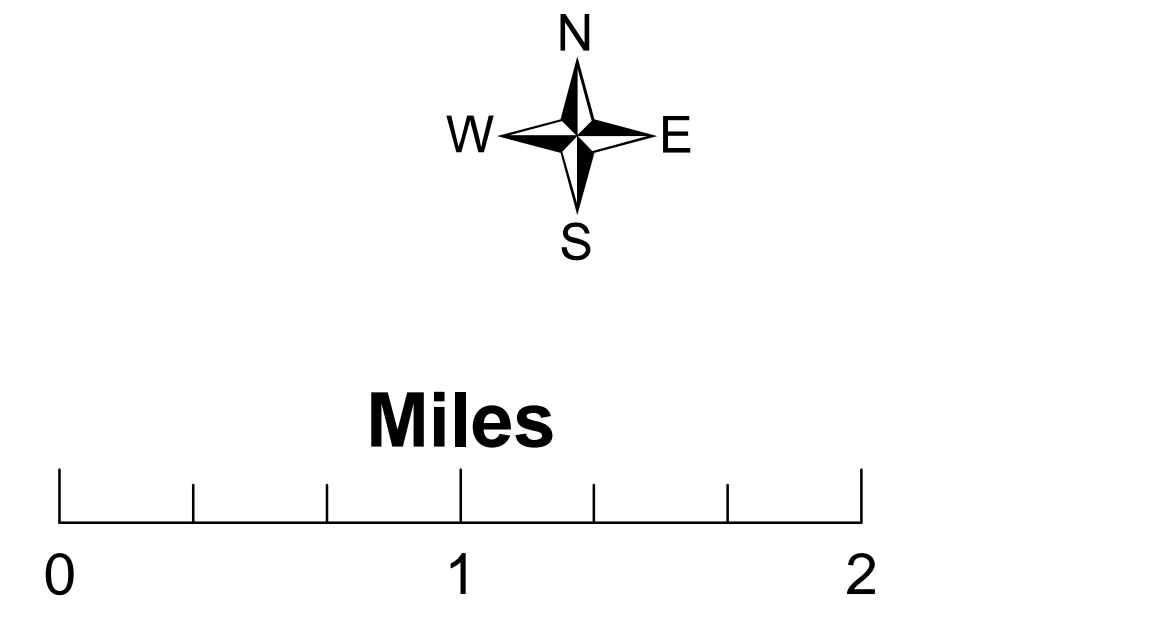


122°44'55"W 122°43'54"W 122°42'54"W 122°41'54"W 122°40'53"W 122°39'53"W 122°38'53"W 122°37'53"W 122°36'52"W 122°35'52"W 122°34'52"W 122°33'51"W 122°32'51"W 122°31'51"W 122°30'50"W 122°29'50"W 122°28'50"W 122°27'49"W 122°26'49"W 122°25'49"W 122°24'49"W 122°23'48"W 122°22'48"W

Umpqua North Complex
OR-UPF-000406
August 28, 2017
18,073 Total Acres
as of 8/27 2208 hrs
BRANCH II

- Drop Point
- Ⓜ Helibase
- Ⓢ Unimproved Landing Area
- Ⓢ Helispot
- Ⓜ Repeater
- ⚠ Safety Zone
- Ⓜ Water Source
-) Division Break
- || Branch Break
- Ⓜ Parking_Area
- Structures
- ▭ TFR
- ◆ Mile Post
- Ⓜ Bridge
- Uncontrolled Fire Edge
- Completed Line
- Ⓜ Completed Dozer Line
- Completed Hand Line
- Escape Route
- Strategic Confinement Options
- Powerline
- Contours 100' Intervals
- Current Fire Perimeter
- ▭ Umpqua North Complex
- ▭ Active Timber Sales
- ▭ Bureau of Land Management
- ▭ Private
- ▭ United States Forest Service
- ▭ National Forest Boundary

- Dip Sites**
- Ⓜ OK
 - Ⓜ Restricted



122°44'55"W 122°43'54"W 122°42'54"W 122°41'54"W 122°40'53"W 122°39'53"W 122°38'53"W 122°37'53"W 122°36'52"W 122°35'52"W 122°34'52"W 122°33'51"W 122°32'51"W 122°31'51"W 122°30'50"W 122°29'50"W 122°28'50"W 122°27'49"W 122°26'49"W 122°25'49"W 122°24'49"W 122°23'48"W 122°22'48"W