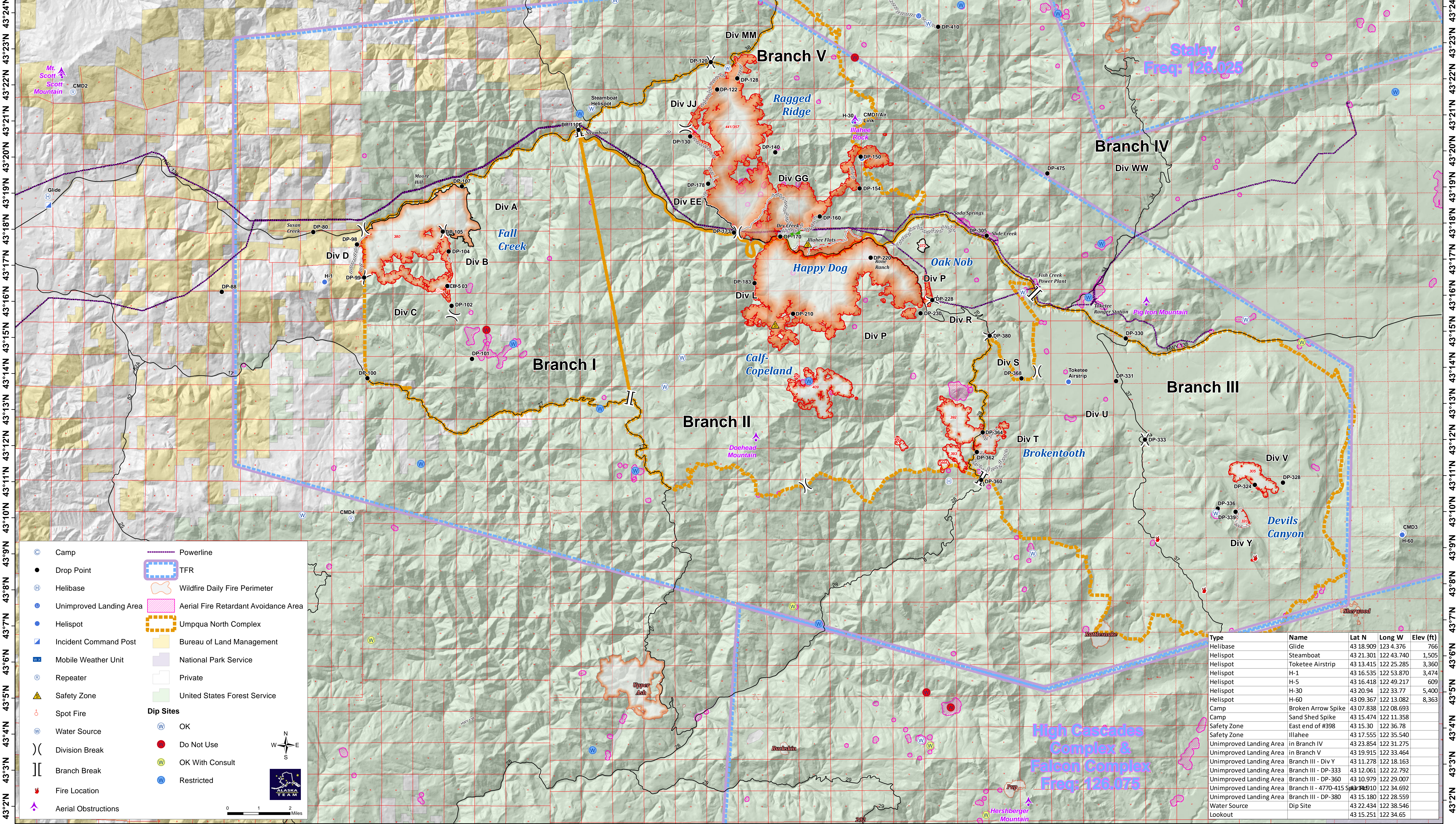


123°4'W 123°2'W 123°0'W 122°58'W 122°56'W 122°54'W 122°52'W 122°50'W 122°48'W 122°46'W 122°44'W 122°42'W 122°40'W 122°38'W 122°36'W 122°34'W 122°32'W 122°30'W 122°28'W 122°26'W 122°24'W 122°22'W 122°20'W 122°18'W 122°16'W 122°14'W 122°12'W

Umpqua North Complex
Aerial Operations
OR-UPF-000406
August 29, 2017
20,094 Total Acres
As of 8/29 @ 0036

DIP SITES				DIP SITES					
Name	Latitude	Longitude	Elev (ft)	Use	Name	Latitude	Longitude	Elev (ft)	Use
Beaver Swamp	N43° 5.101'	W122° 31.130'	3,075	DO NOT USE	Elephant Lake	N43° 35.739'	W122° 39.234'	5,127	OK With Consult
Fish Lake	N43° 4.680'	W122° 30.213'	3,370	DO NOT USE	Blue Bluff Pond	N42° 54.762'	W122° 50.232'	2,256	OK With Consult
Willow Flats Sump	N43° 15.198'	W122° 47.735'	4,015	DO NOT USE	Drew Lake	N42° 47.200'	W122° 56.400'	3,666	OK With Consult
Beaver Pond	N43° 22.712'	W122° 33.711'	3,142	DO NOT USE	Podunk Pond	N43° 6.606'	W122° 52.129'	3,156	OK With Consult
Blodgett Hill Well	N43° 40.957'	W122° 43.614'	2,039	OK	Skookum Pond	N43° 0.529'	W122° 35.831'	3,494	OK With Consult
Dinner Ridge Hill Well Tank	N43° 41.286'	W122° 41.033'	2,433	OK	Stump Lake	N43° 14.732'	W122° 16.817'	3,860	OK With Consult
Cottage Grove Lake	N43° 42.277'	W123° 3.962'	791	OK	Alligator Pond	N43° 7.505'	W122° 36.171'	2,908	OK With Consult
Dorena Lake	N43° 46.209'	W122° 54.912'	832	OK	Cliff Lake	N43° 3.625'	W122° 30.995'	4,267	OK With Consult
Lookout Reservoir	N43° 50.698'	W122° 37.504'	929	OK	Shadow Pond	N43° 0.425'	W122° 51.456'	1,906	OK With Consult
Hills Creek Reservoir	N43° 40.250'	W122° 25.463'	1,542	OK	Triangle Lake	N43° 1.693'	W122° 28.902'	4,546	OK With Consult
Chicoot Ridge	N43° 24.332'	W122° 42.816'	4,151	OK	Gertrude Lake	N43° 35.703'	W122° 32.452'	4,787	Restricted
Curtus Lake	N43° 7.194'	W122° 57.617'	2,469	OK	Emile Sump	N43° 14.809'	W122° 46.723'	4,195	Restricted
Lemon Butte	N43° 29.117'	W122° 39.457'	3,012	OK	Fuller Lake	N43° 24.148'	W122° 29.665'	4,902	Restricted
Cinderella Springs	N43° 14.410'	W122° 40.319'	4,045	OK	Steamboat	N43° 21.186'	W122° 44.188'	1,285	Restricted
Steamboat Hill Dip	N43° 21.324'	W122° 43.723'	1,527	OK	Hemlock Lake	N43° 11.281'	W122° 42.106'	4,408	Restricted
Red Butte	N43° 10.069'	W122° 54.721'	3,795	OK	Carmen Lake	N43° 7.016'	W122° 35.194'	2,426	Restricted
Reynolds Ridge	N43° 23.639'	W122° 30.910'	5,138	OK	Ash Pond	N43° 3.538'	W122° 43.762'	2,142	Restricted
Red Top Reservoir	N43° 4.971'	W122° 57.423'	3,796	OK	Loletta Lake	N43° 23.892'	W122° 25.981'	5,322	Restricted
Fish Creek Forebay	N43° 16.173'	W122° 27.391'	3,024	OK	Lemolo Two Forebay	N43° 17.508'	W122° 24.394'	4,142	Restricted
Clearwater No 1 Forebay	N43° 15.369'	W122° 18.935'	3,872	OK	Toketee Lake	N43° 16.022'	W122° 24.896'	2,425	Restricted
Calamut	N43° 21.944'	W122° 6.530'	5,890	OK	Lemolo Lake	N43° 18.726'	W122° 10.346'	4,142	Restricted
Skookum Lake	N43° 10.007'	W122° 20.133'	5,540	OK	Lemolo One Forebay	N43° 21.647'	W122° 13.182'	4,066	Restricted
Wolf Lake	N43° 8.930'	W122° 27.073'	5,465	OK	Diamond Lake	N43° 8.363'	W122° 9.417'	5,183	Restricted
Buckeye Lake	N43° 3.770'	W122° 31.341'	4,189	OK	Twin Lakes	N43° 13.745'	W122° 35.518'	5,031	Restricted
Lumpy Sump	N43° 13.605'	W122° 40.982'	4,089	OK	Bradley Lake	N43° 24.456'	W122° 28.294'	5,187	Restricted
Red Top Spring Hill Dip	N43° 4.821'	W122° 57.359'	3,824	OK	Bullpup Lake	N43° 25.926'	W122° 30.284'	4,703	Restricted
Tinhat Pond	N42° 58.780'	W122° 56.858'	2,631	OK	Cavitt Creek Hill Dip	N43° 9.155'	W122° 59.564'	1,564	Restricted
Patterson Hill well	N43° 45.335'	W122° 39.124'	2,740	OK	Hades Pond	N43° 11.490'	W122° 50.235'	2,935	Restricted
					Lake in the Woods	N43° 13.002'	W122° 43.439'	4,008	Restricted



	Camp		Powerline
	Drop Point		TFR
	Helibase		Wildfire Daily Fire Perimeter
	Unimproved Landing Area		Aerial Fire Retardant Avoidance Area
	Helispot		Umpqua North Complex
	Incident Command Post		Bureau of Land Management
	Mobile Weather Unit		National Park Service
	Repeater		Private
	Safety Zone		United States Forest Service
	Spot Fire	Dip Sites	
	Water Source		OK
	Division Break		Do Not Use
	Branch Break		OK With Consult
	Fire Location		Restricted
	Aerial Obstructions		

Type	Name	Lat N	Long W	Elev (ft)
Helibase	Glide	43 18.909	123 4.376	766
Helispot	Steamboat	43 21.301	122 43.740	1,505
Helispot	Toketee Airstrip	43 13.415	122 25.285	3,360
Helispot	H-1	43 16.535	122 53.870	3,474
Helispot	H-S	43 16.418	122 49.217	609
Helispot	H-30	43 20.94	122 33.77	5,400
Helispot	H-60	43 09.367	122 13.082	8,363
Camp	Broken Arrow Spike	43 07.838	122 08.693	
Camp	Sand Shed Spike	43 15.474	122 11.358	
Safety Zone	East end of #398	43 15.30	122 36.78	
Safety Zone	Illahae	43 17.555	122 35.540	
Unimproved Landing Area	in Branch IV	43 23.854	122 31.275	
Unimproved Landing Area	in Branch V	43 19.915	122 33.464	
Unimproved Landing Area	Branch III - Div Y	43 11.278	122 18.163	
Unimproved Landing Area	Branch III - DP-333	43 10.061	122 22.792	
Unimproved Landing Area	Branch III - DP-360	43 10.979	122 29.007	
Unimproved Landing Area	Branch II - 4770-415	43 13.110	122 34.692	
Unimproved Landing Area	Branch III - DP-380	43 15.180	122 28.559	
Water Source	Dip Site	43 22.434	122 38.546	
Lookout		43 15.251	122 34.65	

123°4'W 123°2'W 123°0'W 122°58'W 122°56'W 122°54'W 122°52'W 122°50'W 122°48'W 122°46'W 122°44'W 122°42'W 122°40'W 122°38'W 122°36'W 122°34'W 122°32'W 122°30'W 122°28'W 122°26'W 122°24'W 122°22'W 122°20'W 122°18'W 122°16'W 122°14'W 122°12'W

43°30'N 43°29'N 43°28'N 43°27'N 43°26'N 43°25'N 43°24'N 43°23'N 43°22'N 43°21'N 43°20'N 43°19'N 43°18'N 43°17'N 43°16'N 43°15'N 43°14'N 43°13'N 43°12'N 43°11'N 43°10'N 43°9'N 43°8'N 43°7'N 43°6'N 43°5'N 43°4'N 43°3'N 43°2'N