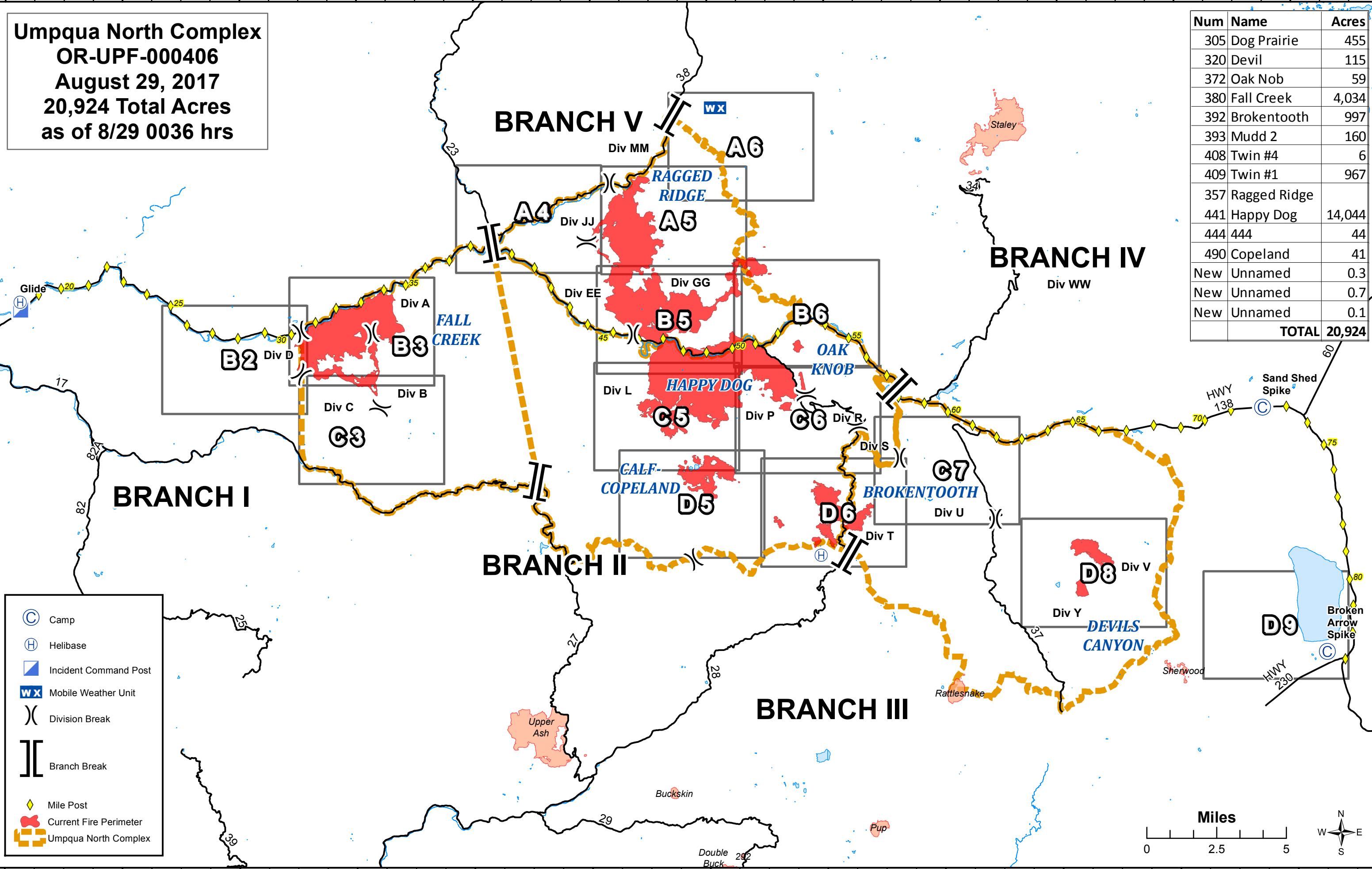
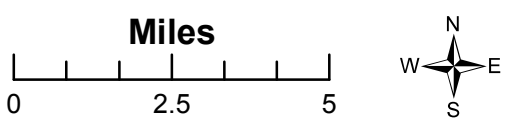


**Umpqua North Complex**  
**OR-UPF-000406**  
**August 29, 2017**  
**20,924 Total Acres**  
**as of 8/29 0036 hrs**

Num	Name	Acres
305	Dog Prairie	455
320	Devil	115
372	Oak Nob	59
380	Fall Creek	4,034
392	Broketooth	997
393	Mudd 2	160
408	Twin #4	6
409	Twin #1	967
357	Ragged Ridge	
441	Happy Dog	14,044
444	444	44
490	Copeland	41
New	Unnamed	0.3
New	Unnamed	0.7
New	Unnamed	0.1
<b>TOTAL</b>		<b>20,924</b>



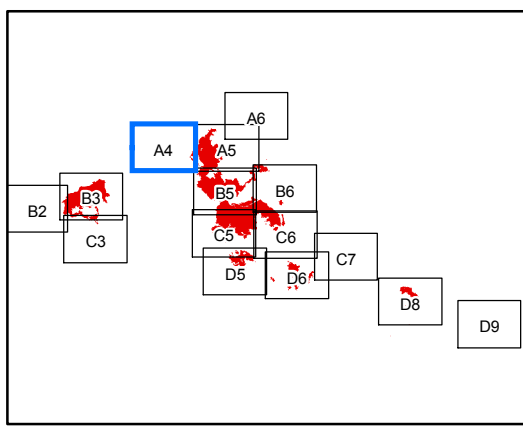
- Camp
- Helibase
- Incident Command Post
- Mobile Weather Unit
- Division Break
- Branch Break
- Mile Post
- Current Fire Perimeter
- Umpqua North Complex



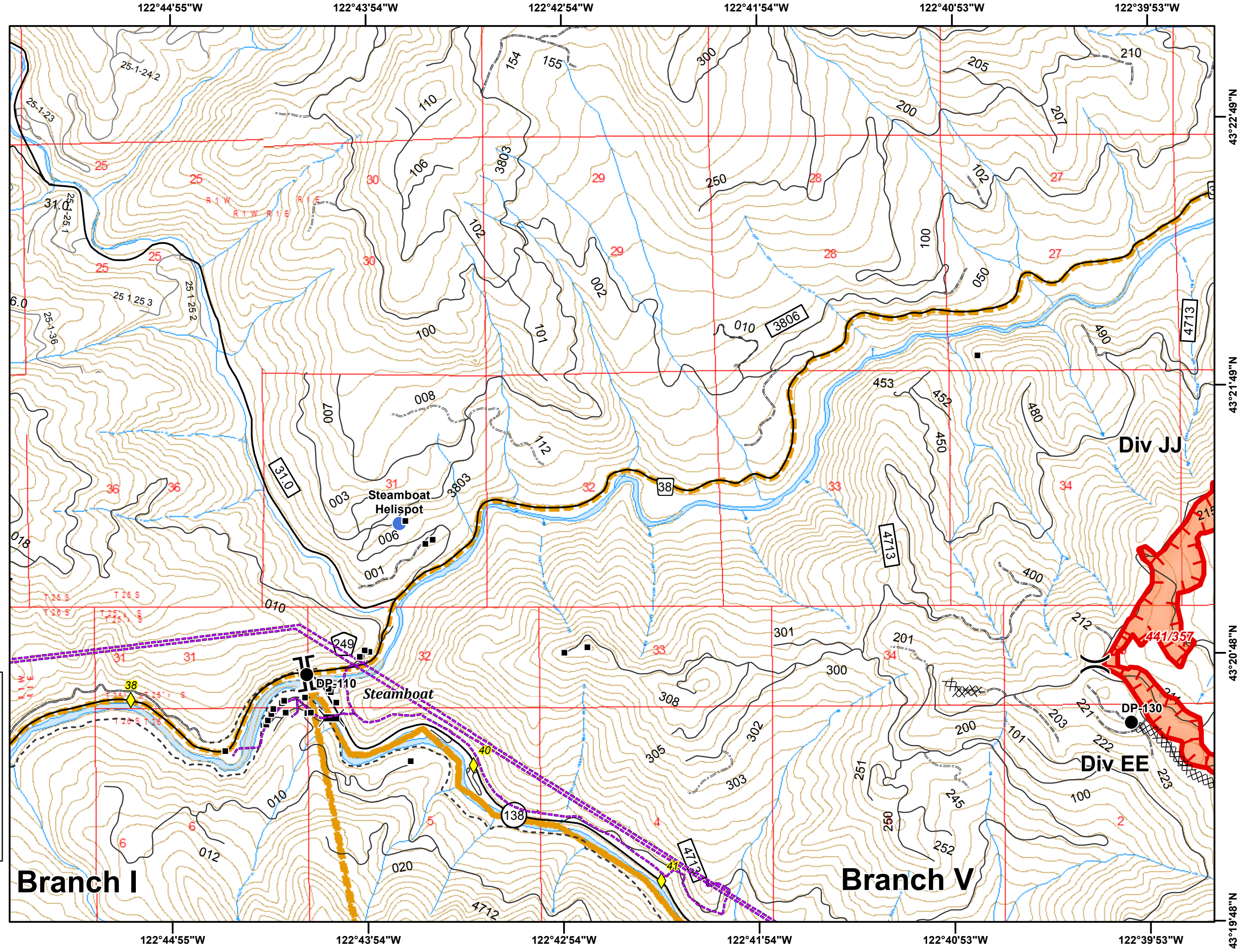
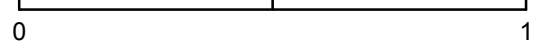
**Umpqua North Complex**  
**OR-UPF-000406**  
**8/29/2017**  
**20,924 Total Acres**  
**as of 8/29 0036 hrs**  
**A4**  
**1:24,000**  
**NAD 83 UTM Zone 10N**



- Mile Post
- Structure
- Bridge
- Drop Point
- Helispot
- Division Break
- Branch Break
- Parking Area
- Uncontrolled Fire Edge
- Completed Dozer Line
- Powerline
- Umpqua North Complex



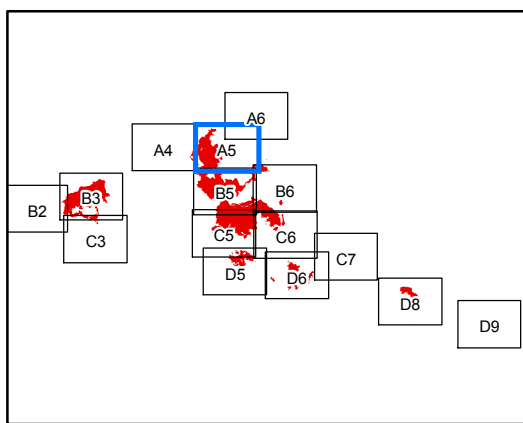
Miles



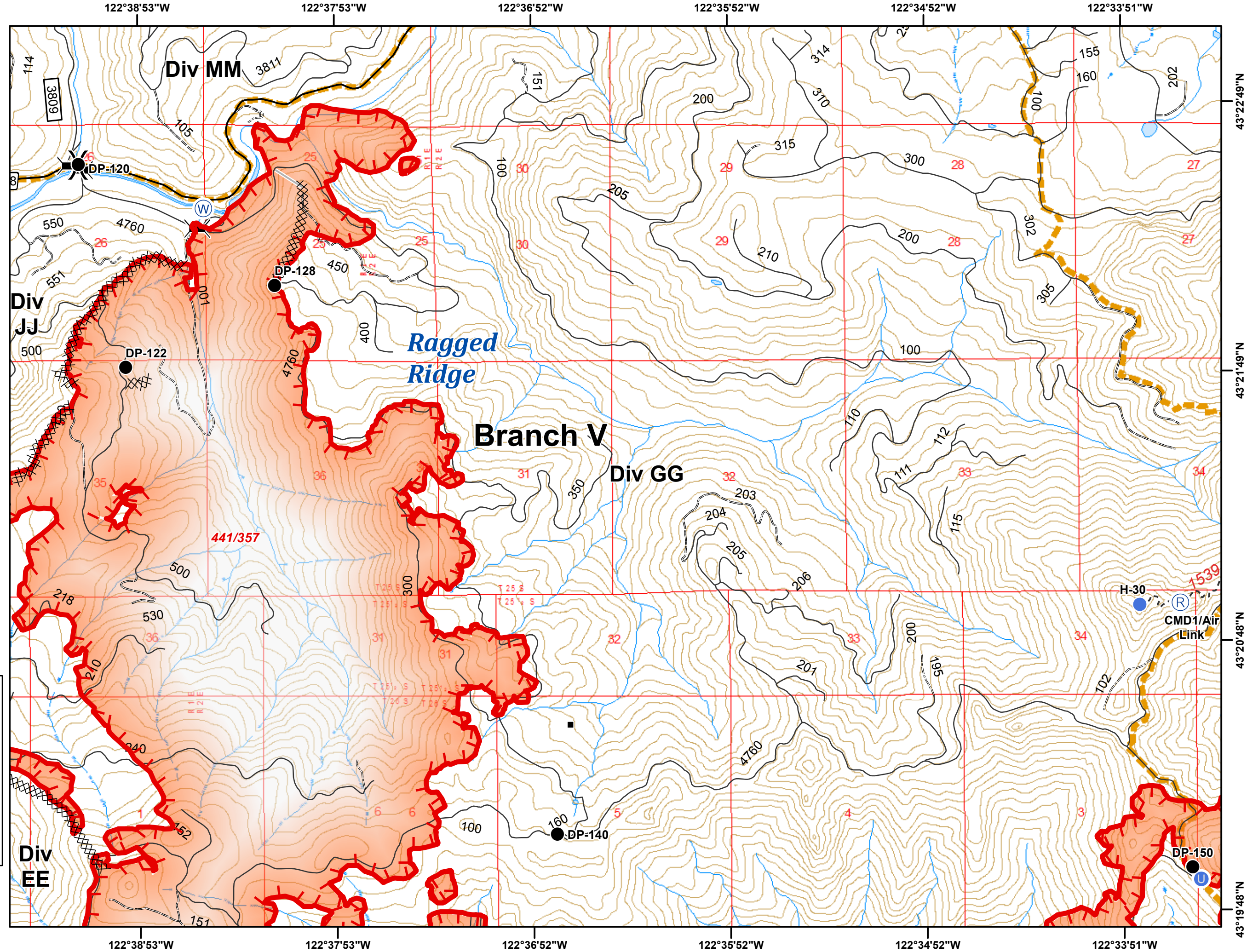
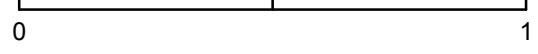
**Umpqua North Complex**  
**OR-UPF-000406**  
**8/29/2017**  
**20,924 Total Acres**  
**as of 8/29 0036 hrs**  
**A5**  
**1:24,000**  
**NAD 83 UTM Zone 10N**



- Structure
- ⚡ Bridge
- Drop Point
- Ⓢ Unimproved Landing Area
- Helispot
- Ⓡ Repeater
- Ⓜ Water Source
- ⌋ Division Break
- └─ Uncontrolled Fire Edge
- XXXXX Completed Dozer Line
- Completed Hand Line
- ▣ Umpqua North Complex



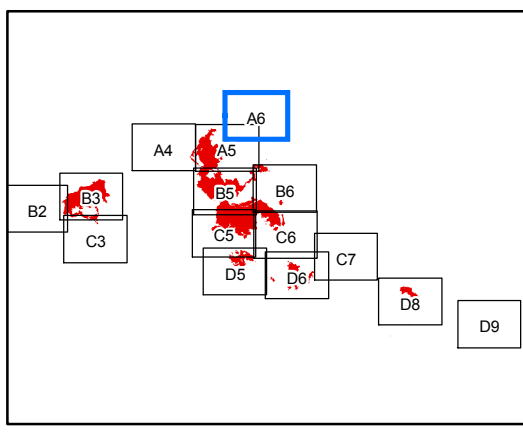
Miles



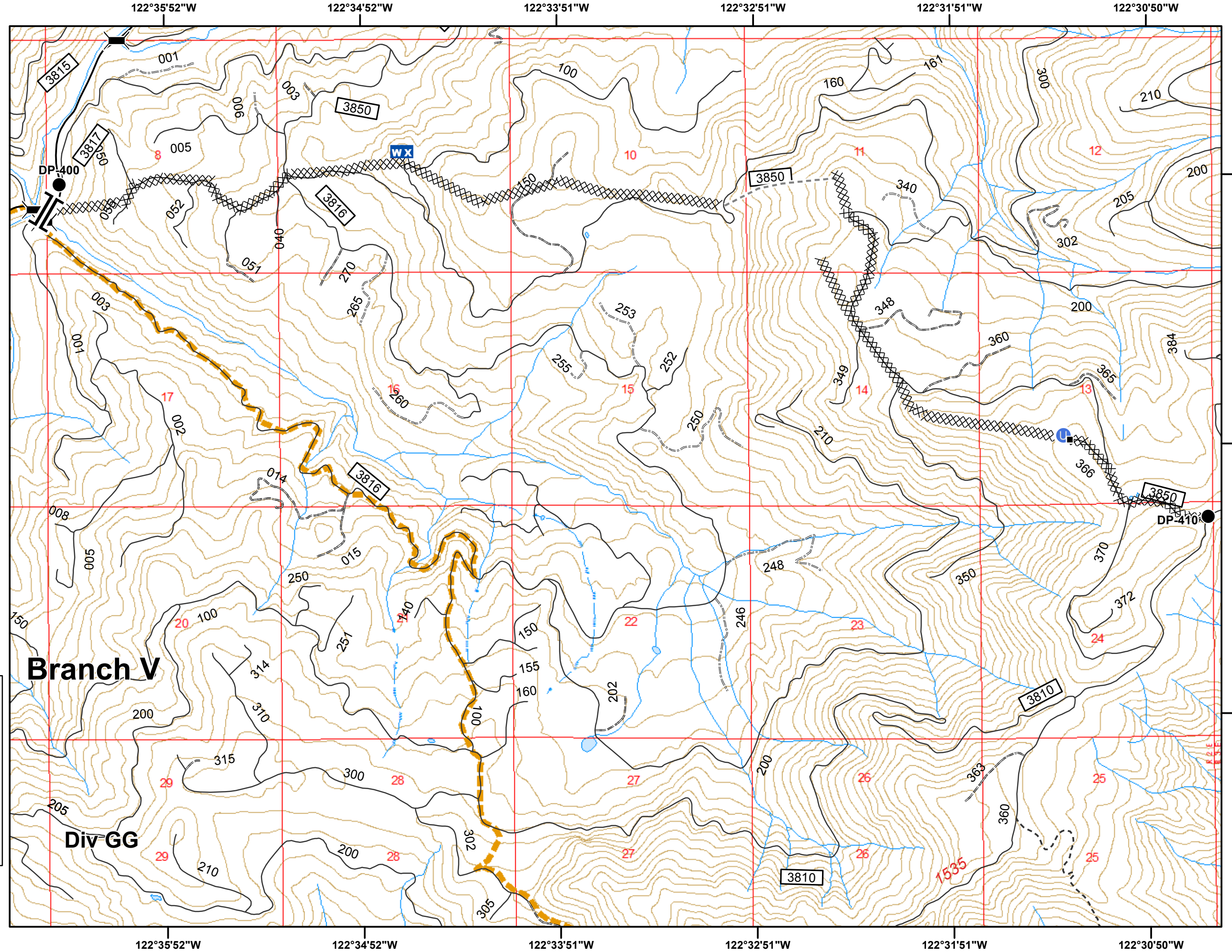
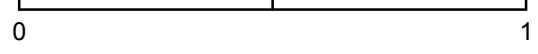
**Umpqua North Complex**  
**OR-UPF-000406**  
**8/29/2017**  
**20,924 Total Acres**  
**as of 8/29 0036 hrs**  
**A6**  
**1:24,000**  
**NAD 83 UTM Zone 10N**



- Structure
- ⌵ Bridge
- Drop Point
- U Unimproved Landing Area
- WX Mobile Weather Unit
- || Branch Break
- XXXXX Completed Dozer Line
- - - Proposed Handline
- Umpqua North Complex



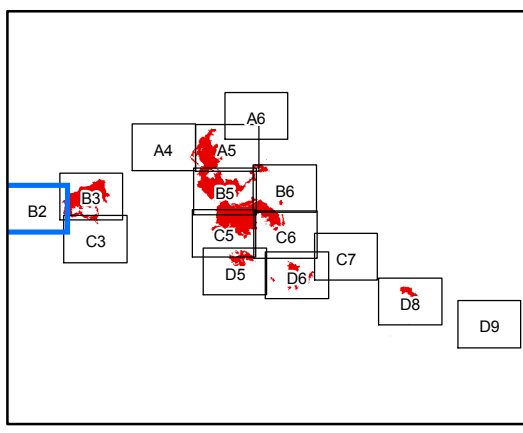
Miles



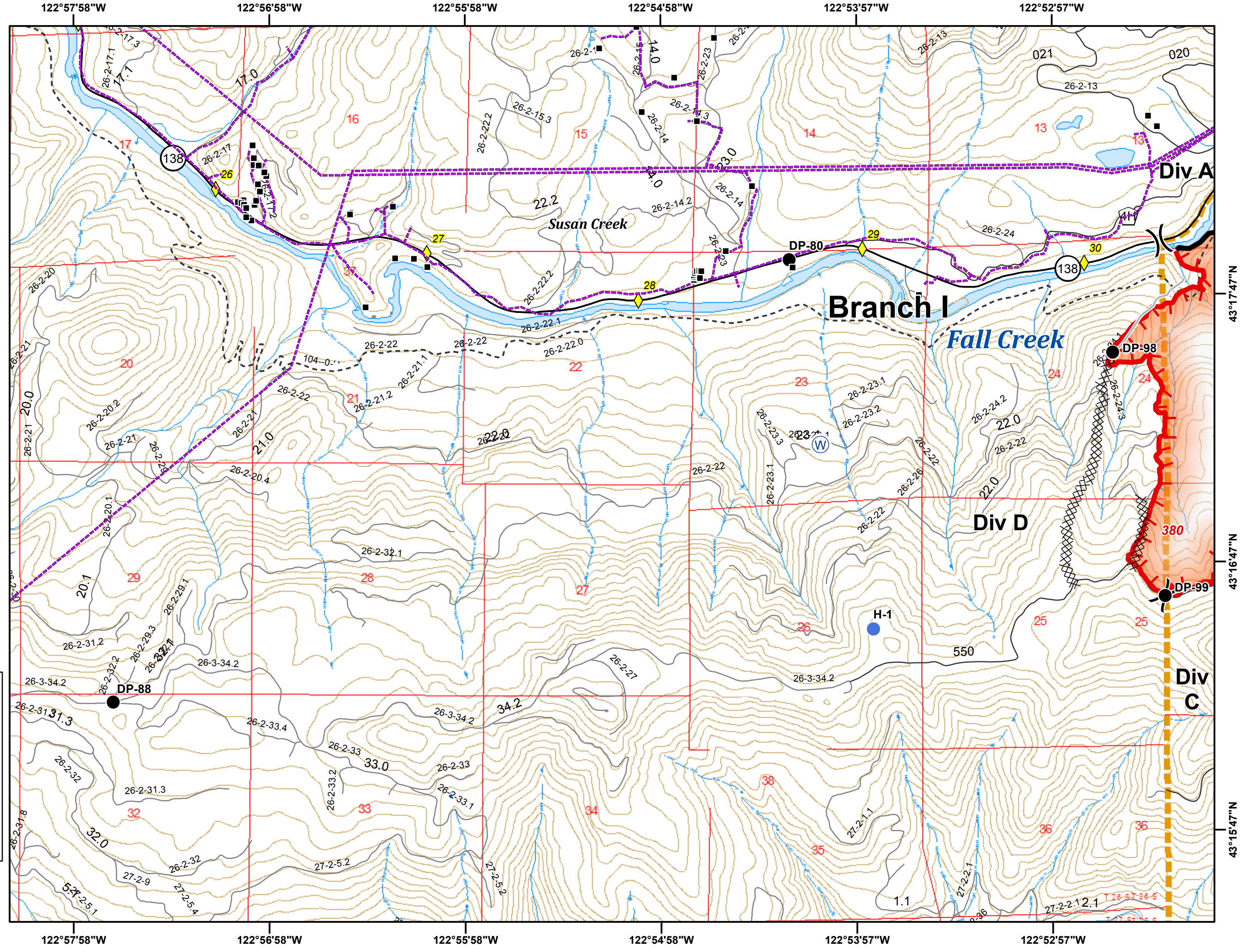
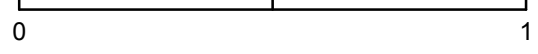
**Umpqua North Complex**  
**OR-UPF-000406**  
**8/29/2017**  
**20,924 Total Acres**  
**as of 8/29 0036 hrs**  
**B2**  
**1:24,000**  
**NAD 83 UTM Zone 10N**



- Mile Post
- Structure
- Drop Point
- Helispot
- Water Source
- Division Break
- Uncontrolled Fire Edge
- Completed Line
- Completed Dozer Line
- Completed Hand Line
- Powerline
- Umpqua North Complex



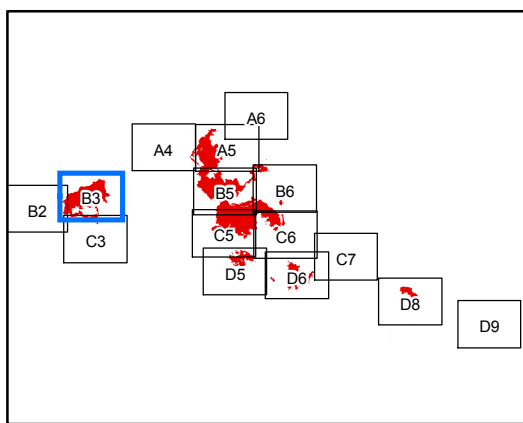
**Miles**



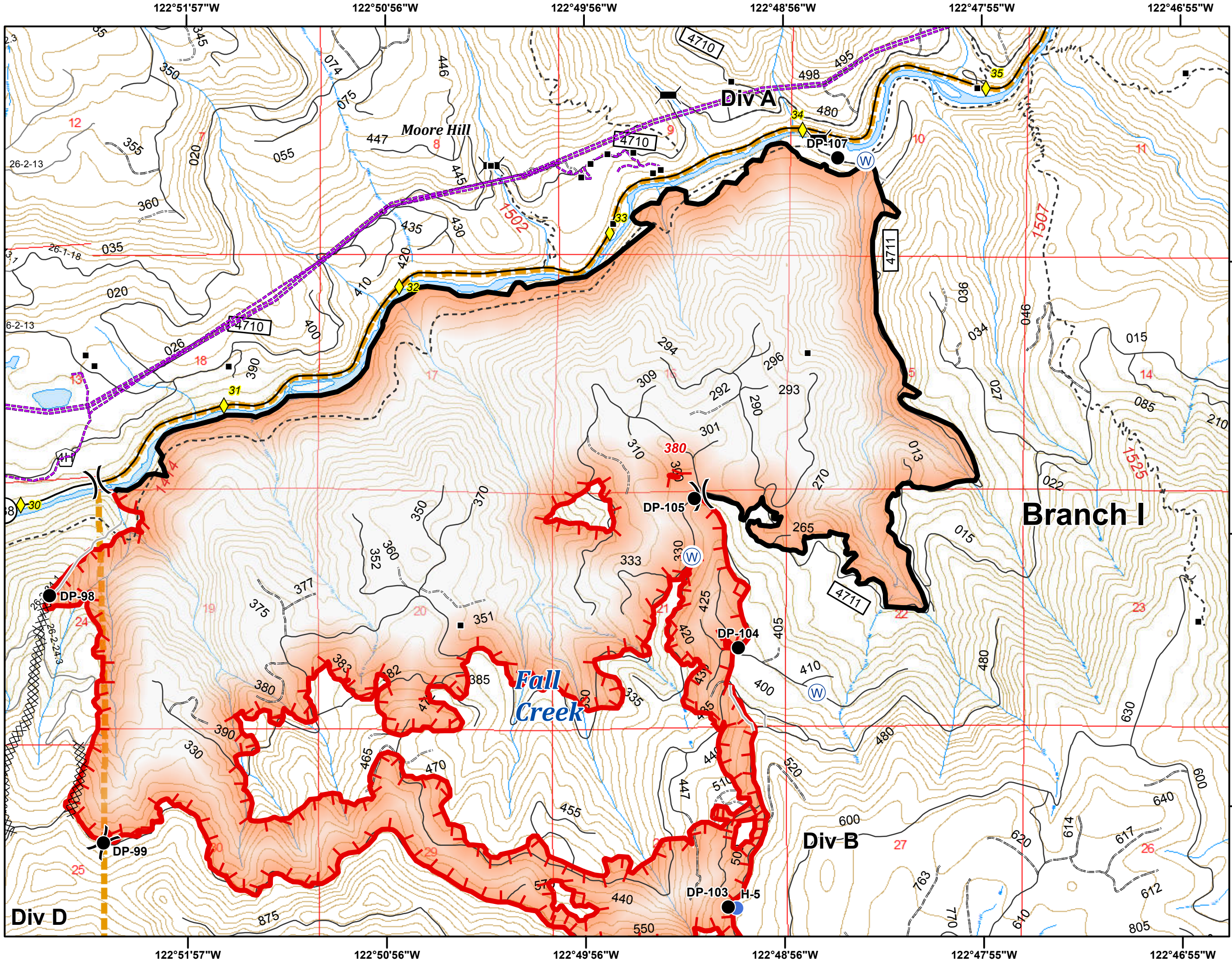
**Umpqua North Complex**  
**OR-UPF-000406**  
**8/29/2017**  
**20,924 Total Acres**  
**as of 8/29 0036 hrs**  
**B3**  
**1:24,000**  
**NAD 83 UTM Zone 10N**



- Mile Post
- Structure
- Bridge
- Drop Point
- Helispot
- Spot Fire
- Water Source
- Division Break
- Uncontrolled Fire Edge
- Completed Line
- Completed Dozer Line
- Completed Hand Line
- Powerline
- Umpqua North Complex



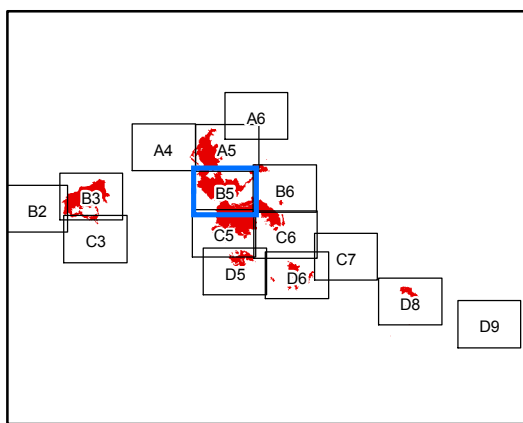
Miles



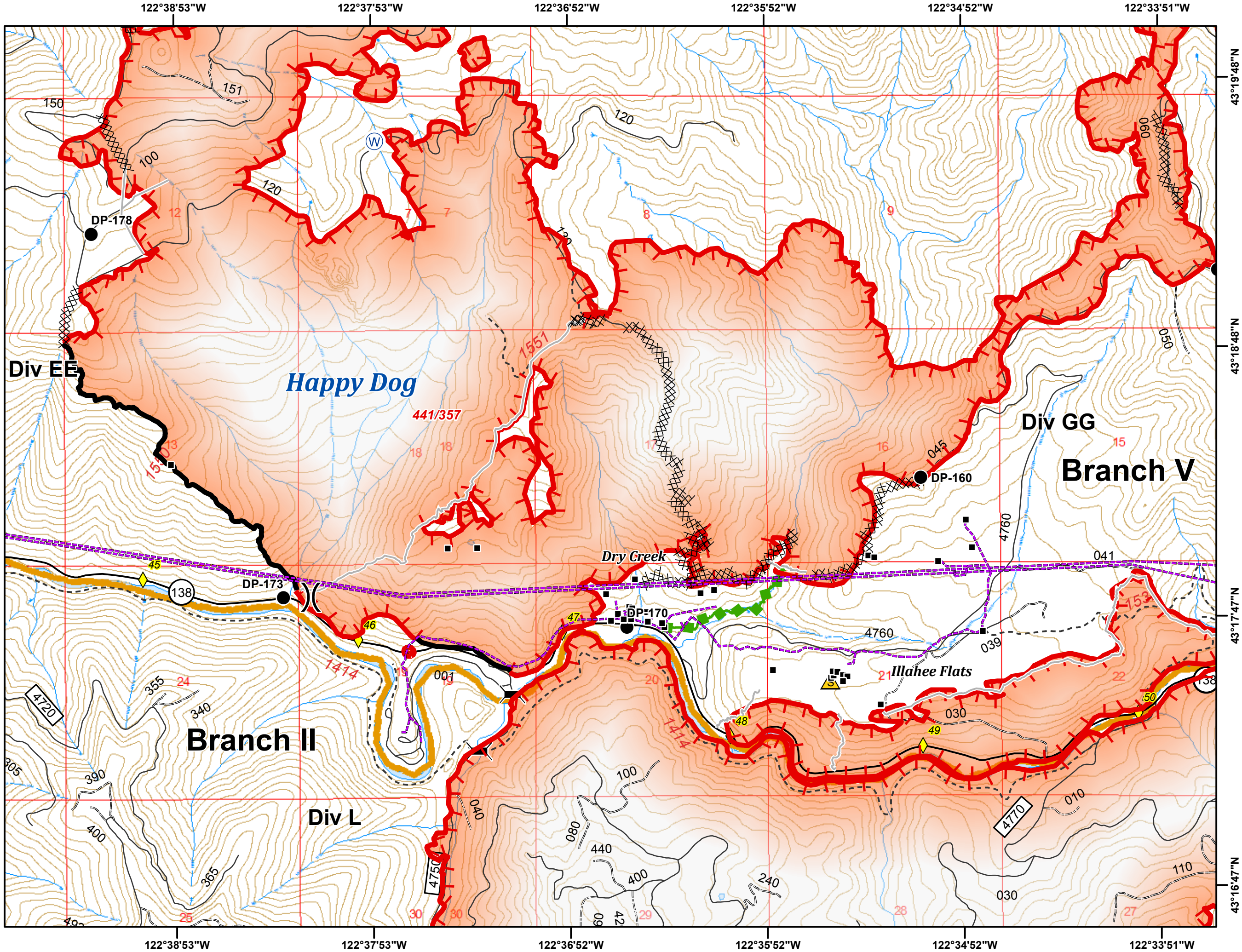
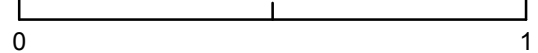
**Umpqua North Complex**  
**OR-UPF-000406**  
**8/29/2017**  
**20,924 Total Acres**  
**as of 8/29 0036 hrs**  
**B5**  
**1:24,000**  
**NAD 83 UTM Zone 10N**



- Mile Post
- Structure
- Bridge
- Drop Point
- Safety Zone
- Water Source
- Division Break
- Uncontrolled Fire Edge
- Completed Line
- Completed Dozer Line
- Completed Hand Line
- Escape Route
- Powerline
- Umpqua North Complex














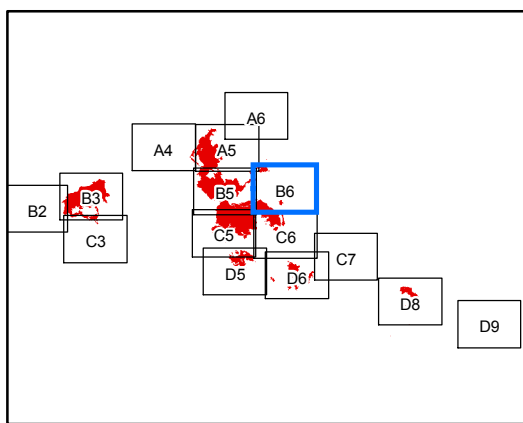
Miles



**Umpqua North Complex**  
**OR-UPF-000406**  
**8/29/2017**  
**20,924 Total Acres**  
**as of 8/29 0036 hrs**  
**B6**  
**1:24,000**  
**NAD 83 UTM Zone 10N**

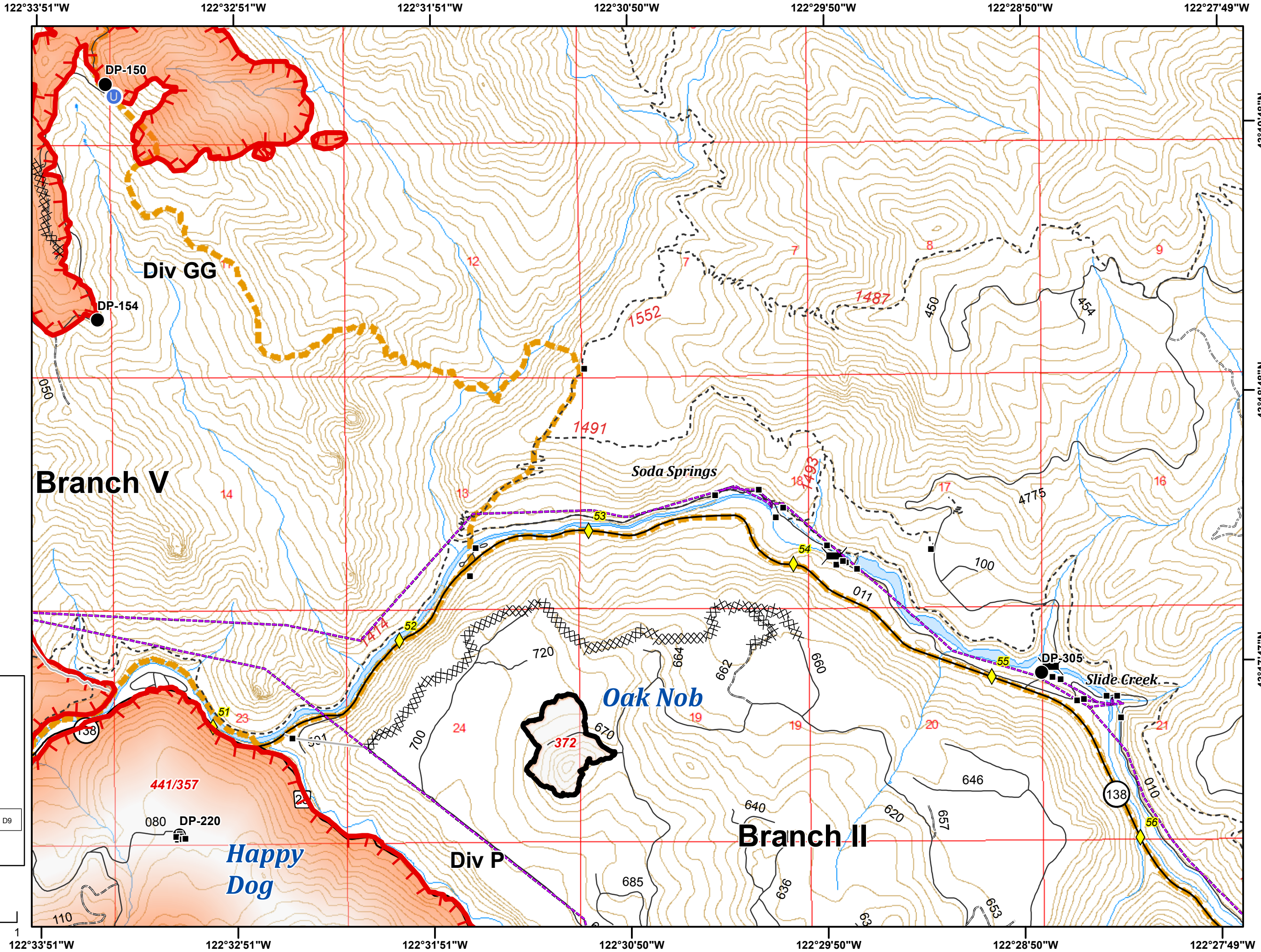


-  Mile Post
-  Structure
-  Bridge
-  Drop Point
-  Unimproved Landing Area
-  Uncontrolled Fire Edge
-  Completed Line
-  Completed Dozer Line
-  Completed Hand Line
-  Powerline
-  Umpqua North Complex



Miles

0

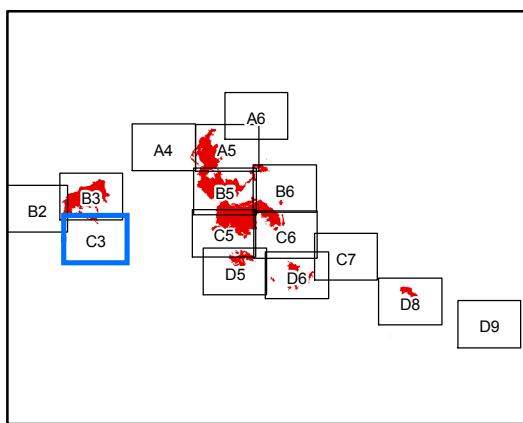




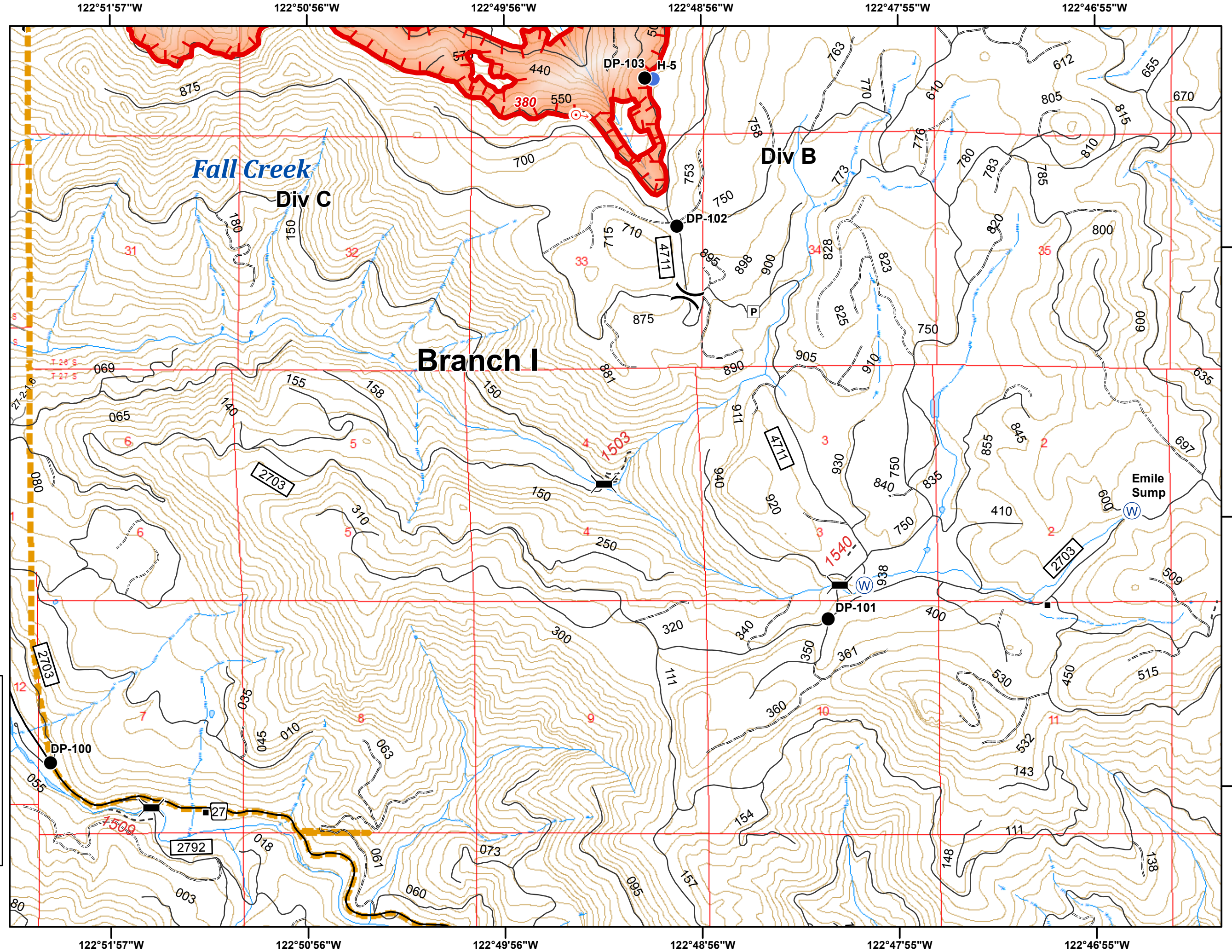
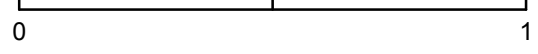
**Umpqua North Complex**  
**OR-UPF-000406**  
**8/29/2017**  
**20,924 Total Acres**  
**as of 8/29 0036 hrs**  
**C3**  
**1:24,000**  
**NAD 83 UTM Zone 10N**



- Structure
- ⌒ Bridge
- Drop Point
- Helispot
- ⊕ Spot Fire
- Ⓜ Water Source
- ⌒ Division Break
- Ⓟ Parking Area
- 🔥 Uncontrolled Fire Edge
- 📦 Umpqua North Complex



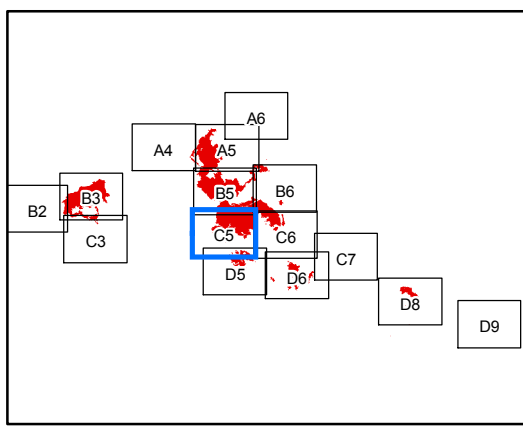
Miles



**Umpqua North Complex**  
**OR-UPF-000406**  
**8/29/2017**  
**20,924 Total Acres**  
**as of 8/29 0036 hrs**  
**C5**  
**1:24,000**  
**NAD 83 UTM Zone 10N**



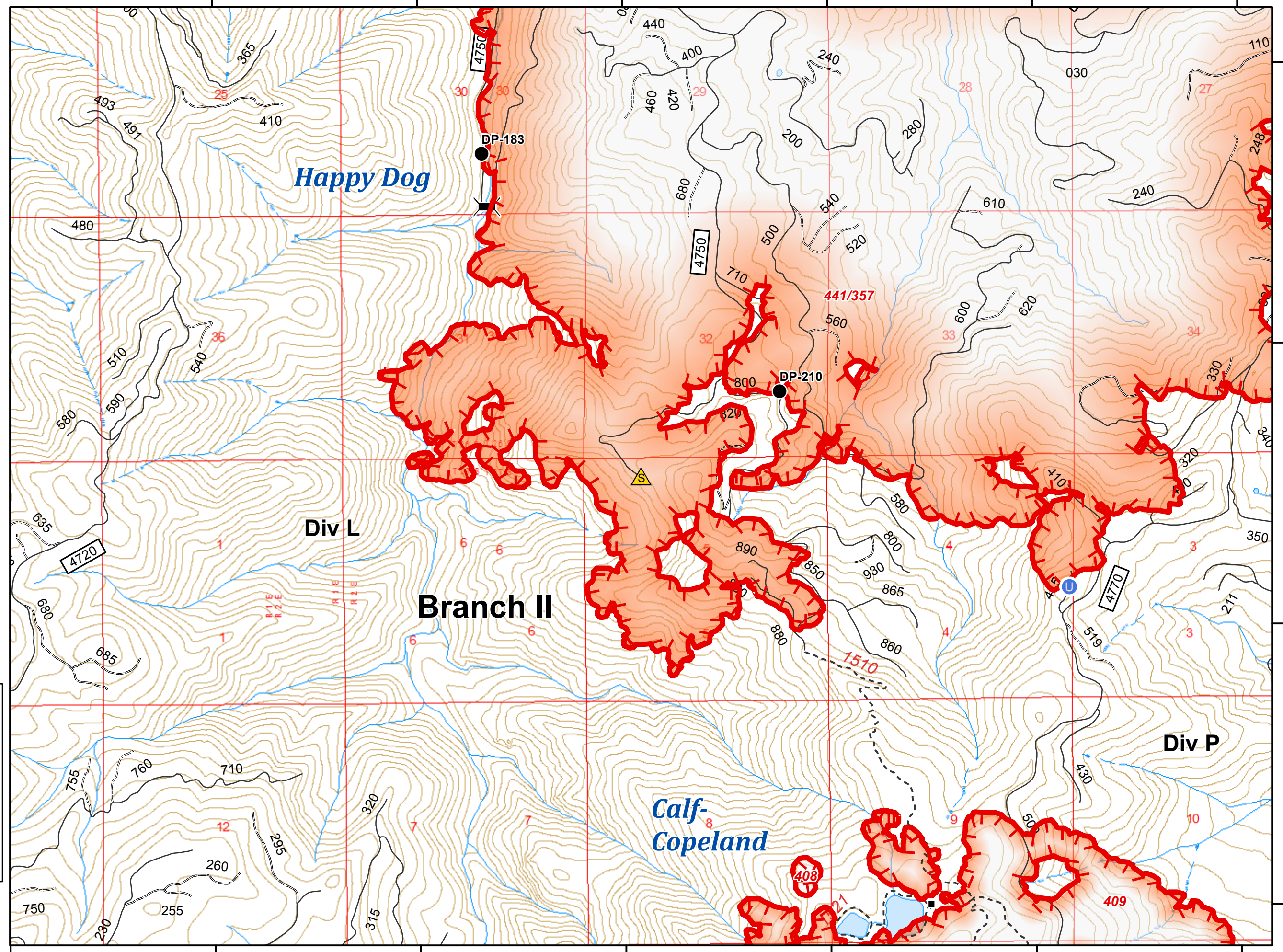
- Structure
- ▬ Bridge
- Drop Point
- ⊕ Unimproved Landing Area
- ⚠ Safety Zone
- 🔴 Uncontrolled Fire Edge
- 🟡 Umpqua North Complex



Miles

0





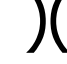



122°39'53"W    122°38'53"W    122°37'53"W    122°36'52"W    122°35'52"W    122°34'52"W    122°33'51"W

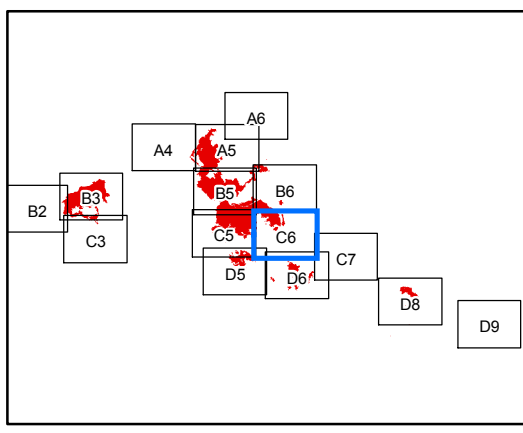


43°16'47"N  
 43°15'47"N  
 43°14'47"N  
 43°13'46"N

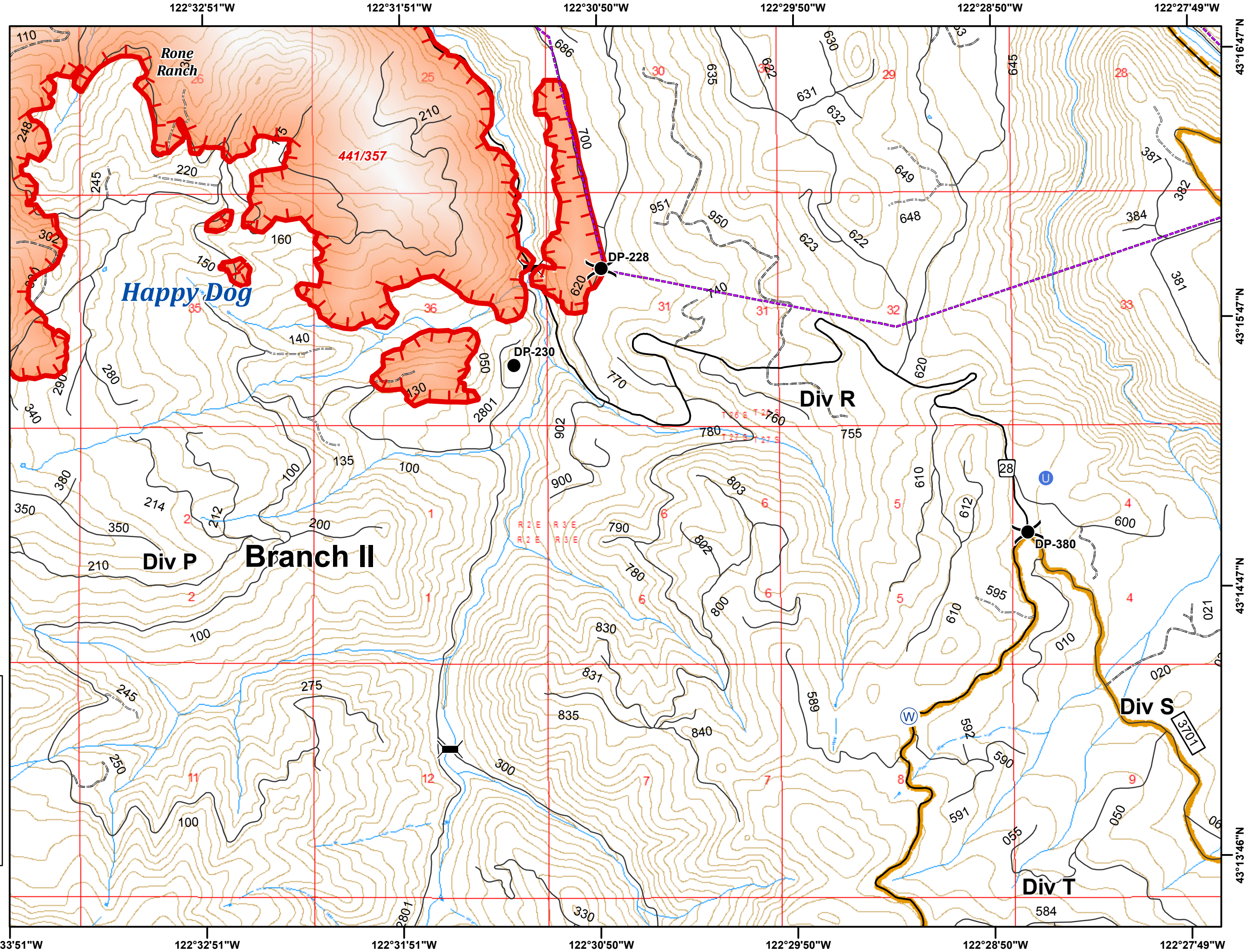
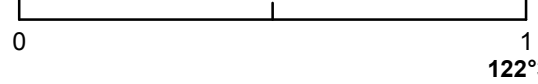
**Umpqua North Complex**  
**OR-UPF-000406**  
**8/29/2017**  
**20,924 Total Acres**  
**as of 8/29 0036 hrs**  
**C6**  
**1:24,000**  
**NAD 83 UTM Zone 10N**



-  Bridge
-  Drop Point
-  Unimproved Landing Area
-  Water Source
-  Division Break
-  Uncontrolled Fire Edge
-  Powerline
-  Umpqua North Complex



Miles

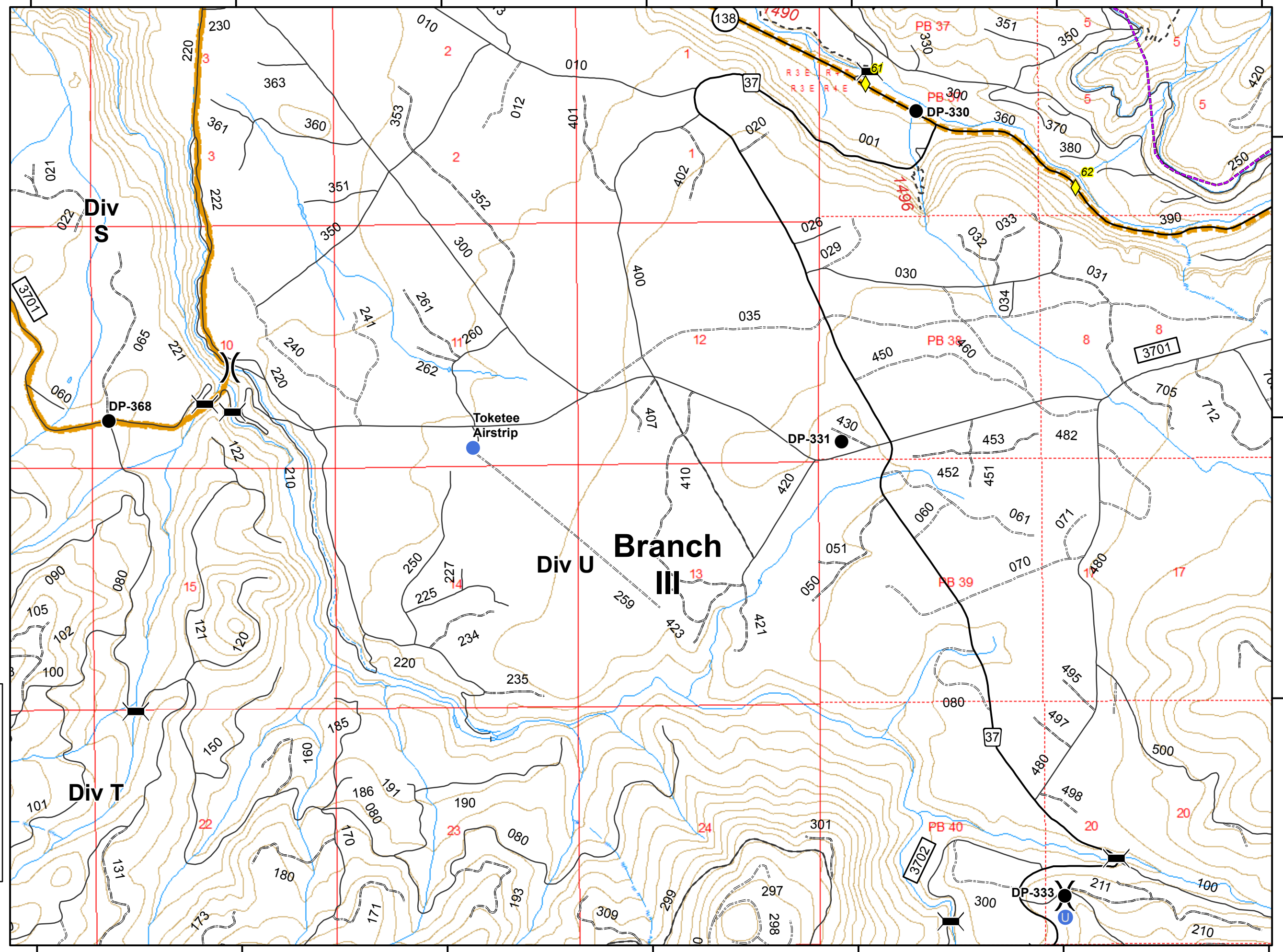


122°27'49"W 122°26'49"W 122°25'49"W 122°24'49"W 122°23'48"W 122°22'48"W 122°21'48"W

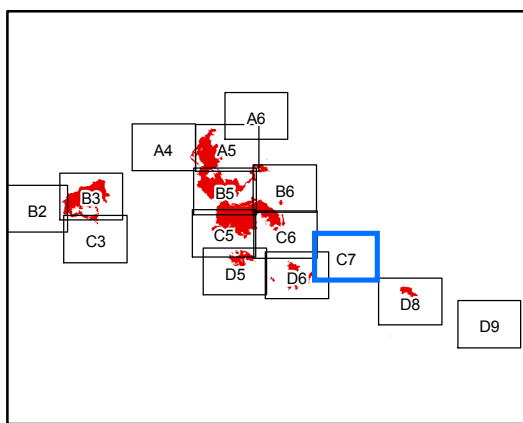
**Umpqua North Complex**  
**OR-UPF-000406**  
**8/29/2017**  
**20,924 Total Acres**  
**as of 8/29 0036 hrs**  
**C7**  
**1:24,000**  
**NAD 83 UTM Zone 10N**



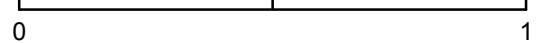
-  Mile Post
-  Bridge
-  Drop Point
-  Unimproved Landing Area
-  Helispot
-  Division Break
-  Powerline
-  Umpqua North Complex



122°27'49"W 122°26'49"W 122°25'49"W 122°24'49"W 122°23'48"W 122°22'48"W 122°21'48"W



Miles

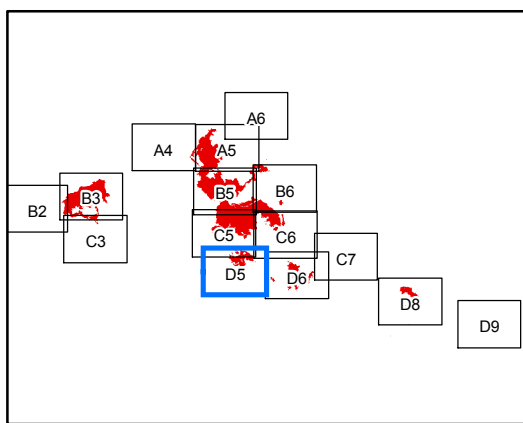
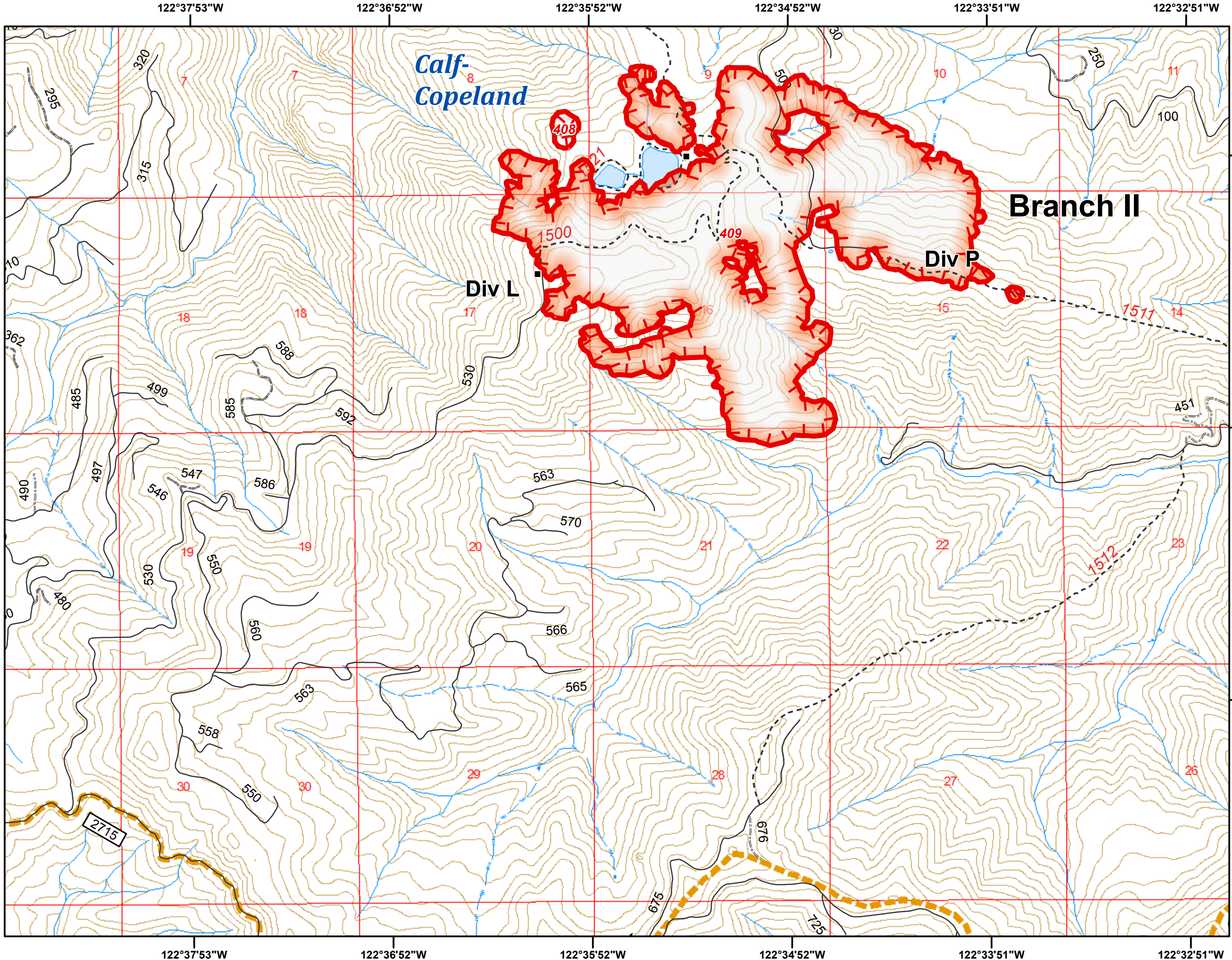


43°14'47"N  
43°13'46"N  
43°12'46"N

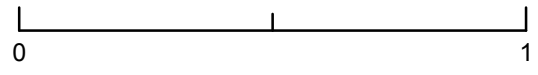
**Umpqua North  
Complex**  
**OR-UPF-000406**  
**8/29/2017**  
**20,924 Total Acres**  
**as of 8/29 0036 hrs**  
**D5**  
**1:24,000**  
**NAD 83 UTM Zone 10N**



- Structure
- ) Division Break
- Uncontrolled Fire Edge
- Umpqua North Complex



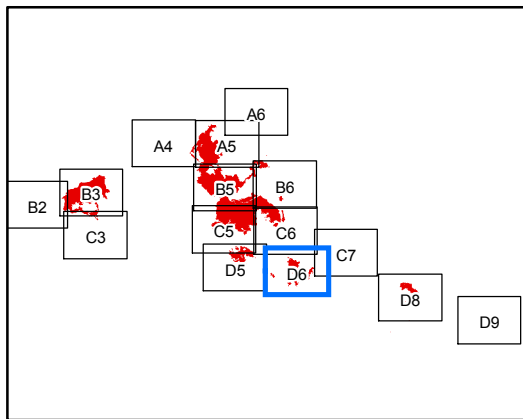
Miles



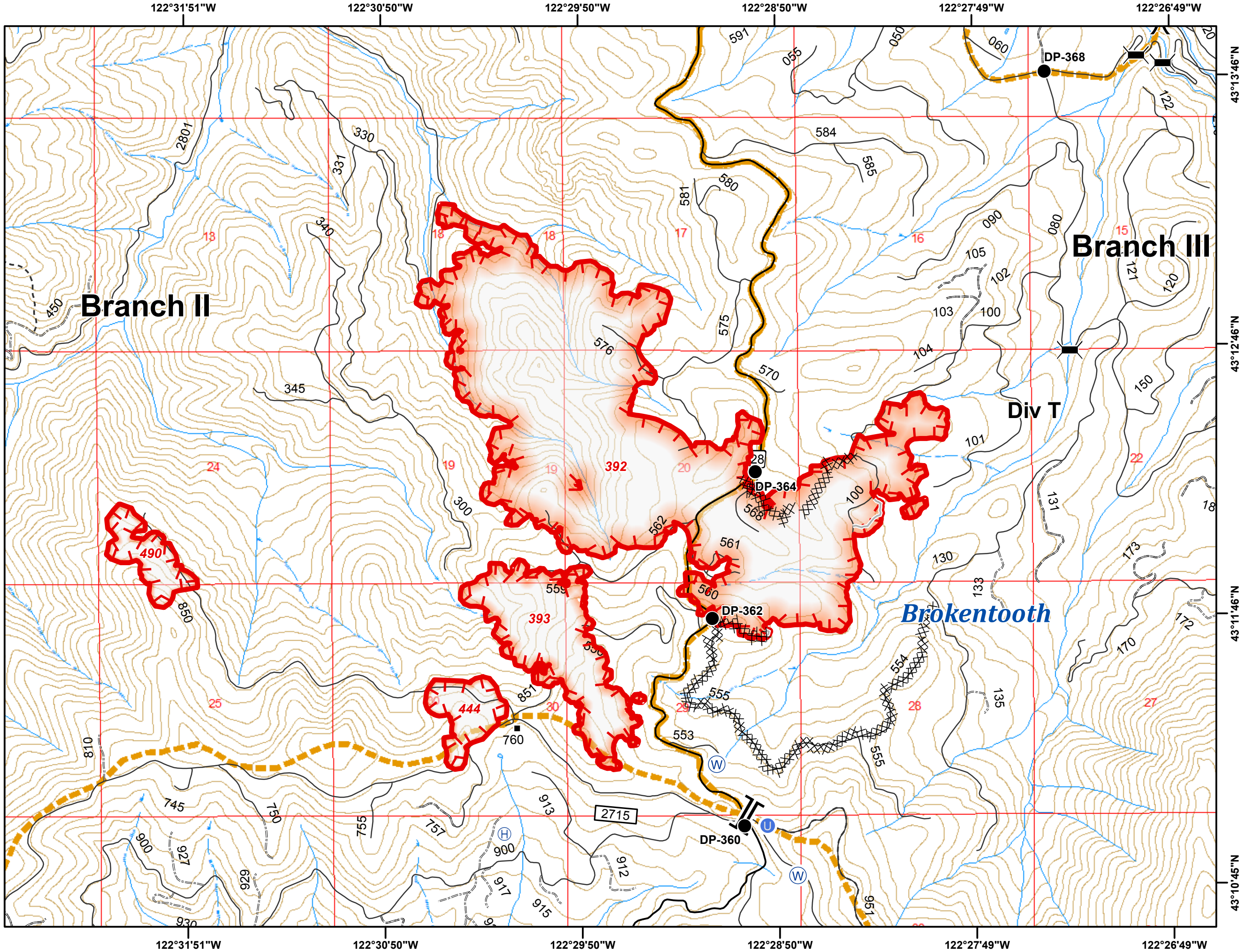
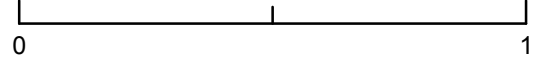
**Umpqua North Complex**  
**OR-UPF-000406**  
**8/29/2017**  
**20,924 Total Acres**  
**as of 8/29 0036 hrs**  
**D6**  
**1:24,000**  
**NAD 83 UTM Zone 10N**



- Structure
- ⚡ Bridge
- Drop Point
- Ⓜ Helibase
- Ⓢ Unimproved Landing Area
- Ⓜ Water Source
- ) Division Break
- || Branch Break
- ┌ Uncontrolled Fire Edge
- XXXX Completed Dozer Line
- Completed Hand Line
- ▭ Umpqua North Complex



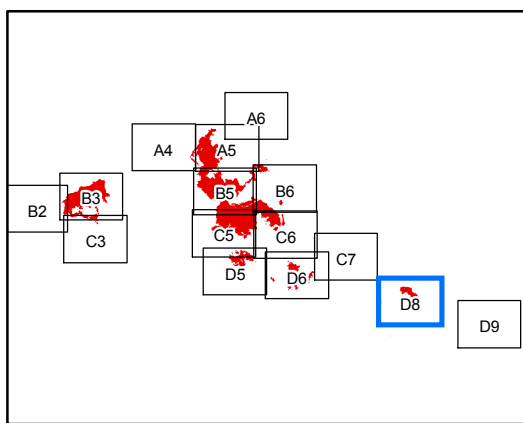
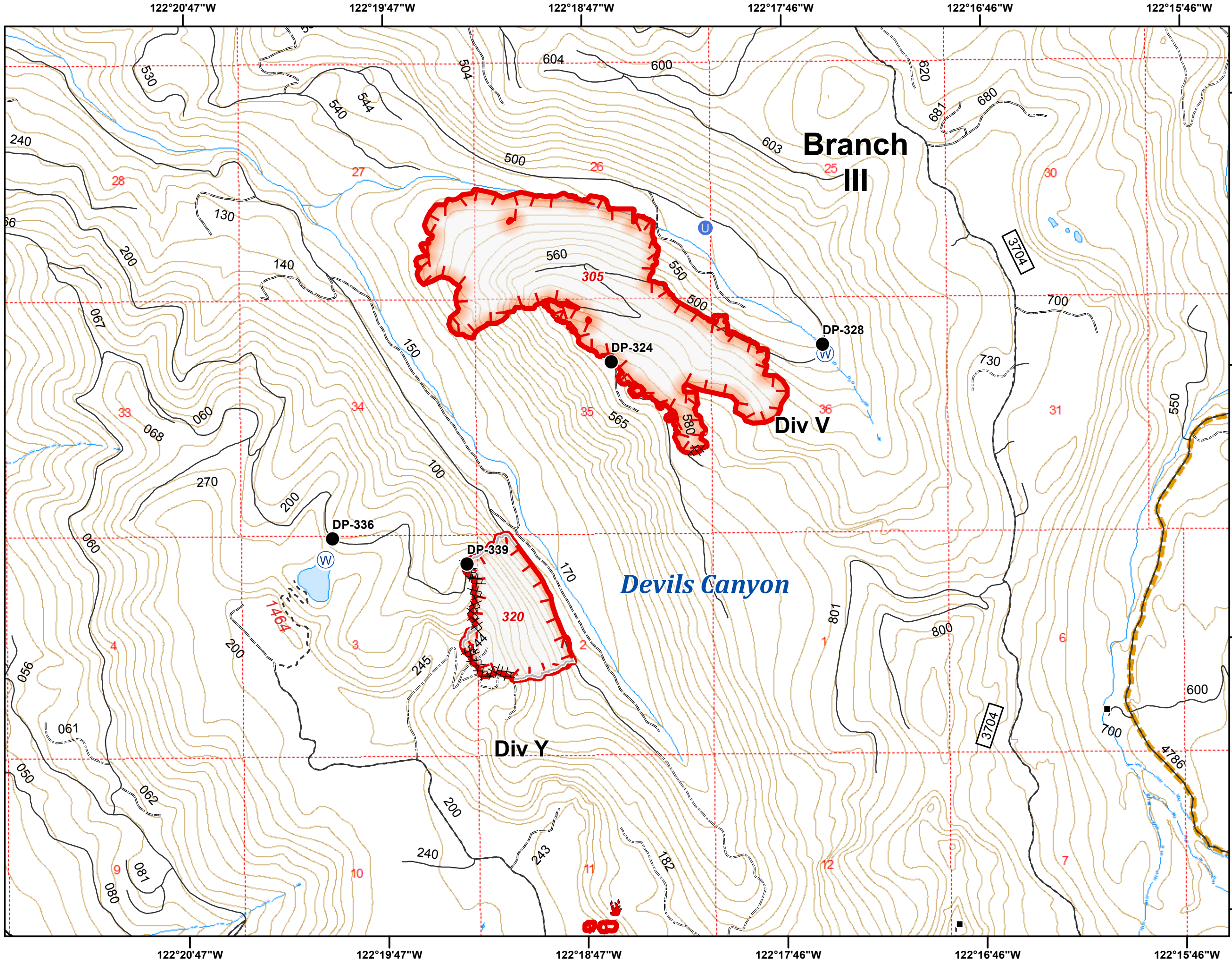
Miles



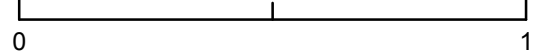
**Umpqua North Complex**  
**OR-UPF-000406**  
**8/29/2017**  
**20,924 Total Acres**  
**as of 8/29 0036 hrs**  
**D8**  
**1:24,000**  
**NAD 83 UTM Zone 10N**



- Structure
- Drop Point
- U Unimproved Landing Area
- W Water Source
- 🔥 Fire Location
- ┌ Uncontrolled Fire Edge
- XXXXX Completed Dozer Line
- Completed Hand Line
- ▣ Umpqua North Complex



Miles



**Umpqua North Complex**  
**OR-UPF-000406**  
**8/29/2017**  
**20,924 Total Acres**  
**as of 8/29 0036 hrs**  
**D9**  
**1:24,000**  
**NAD 83 UTM Zone 10N**



-  Mile Post
-  Structure
-  Camp
-  Helispot
-  Repeater

