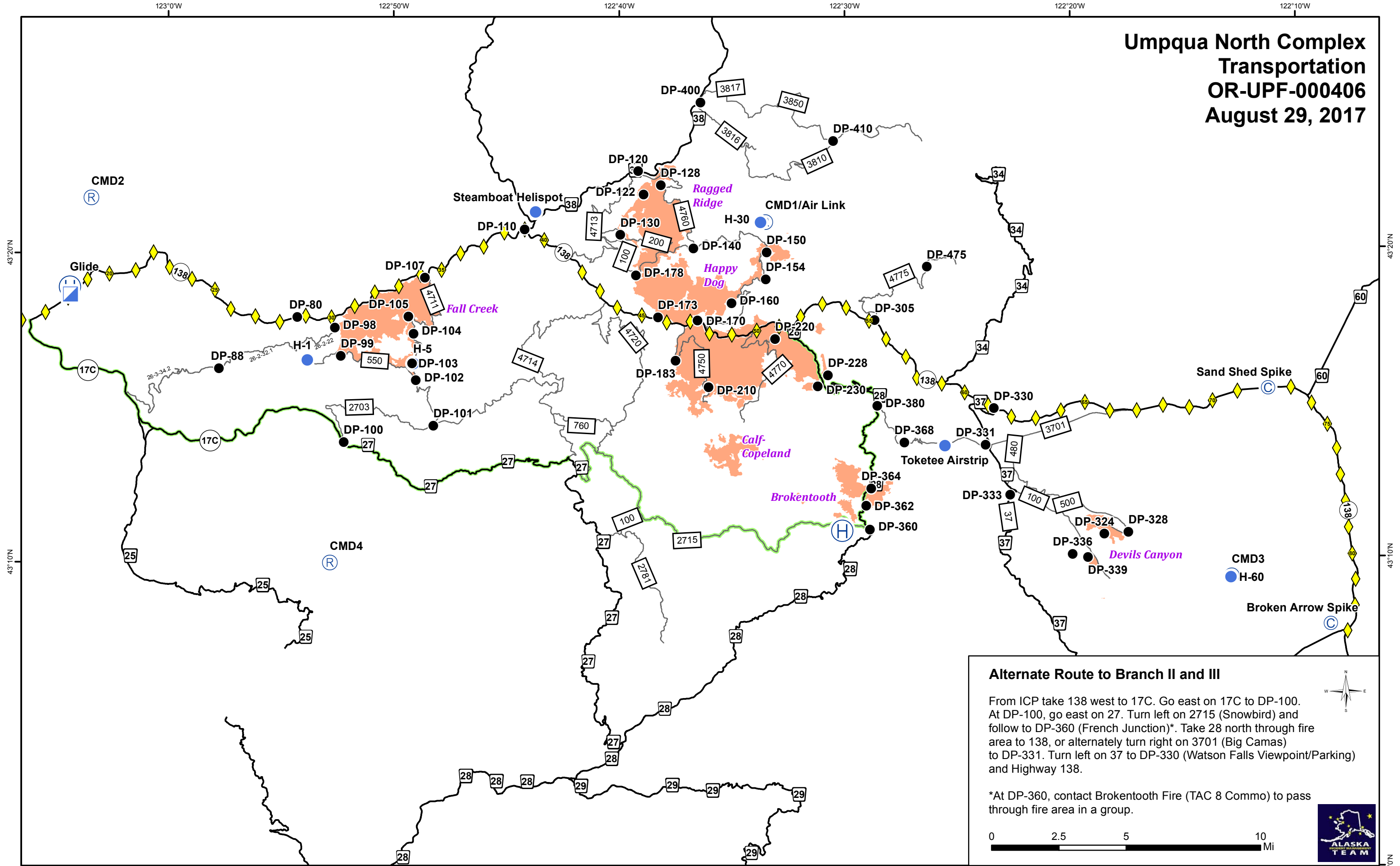


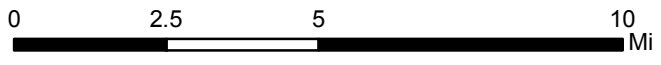
**Umpqua North Complex  
 Transportation  
 OR-UPF-000406  
 August 29, 2017**



**Alternate Route to Branch II and III**

From ICP take 138 west to 17C. Go east on 17C to DP-100. At DP-100, go east on 27. Turn left on 2715 (Snowbird) and follow to DP-360 (French Junction)\*. Take 28 north through fire area to 138, or alternately turn right on 3701 (Big Camas) to DP-331. Turn left on 37 to DP-330 (Watson Falls Viewpoint/Parking) and Highway 138.

\*At DP-360, contact Broketooth Fire (TAC 8 Commo) to pass through fire area in a group.



43°20'N

43°20'N

43°10'N

43°10'N

123°0'W 122°50'W 122°40'W 122°30'W 122°20'W 122°10'W

123°0'W 122°50'W 122°40'W 122°30'W 122°20'W 122°10'W