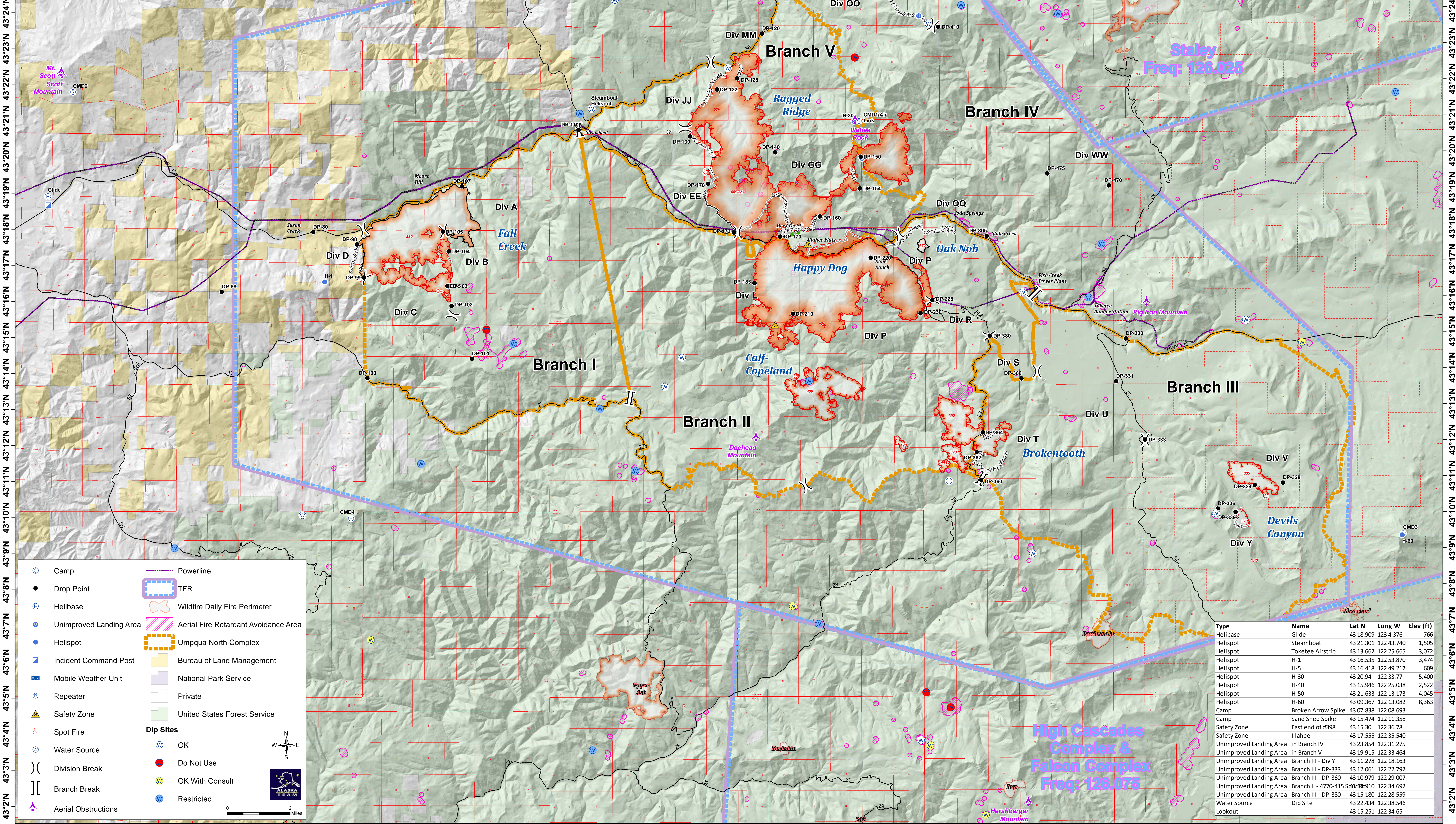


123°4'W 123°2'W 123°0'W 122°58'W 122°56'W 122°54'W 122°52'W 122°50'W 122°48'W 122°46'W 122°44'W 122°42'W 122°40'W 122°38'W 122°36'W 122°34'W 122°32'W 122°30'W 122°28'W 122°26'W 122°24'W 122°22'W 122°20'W 122°18'W 122°16'W 122°14'W 122°12'W

DIP SITES				DIP SITES				
Name	Latitude	Longitude	Elev (ft)	Name	Latitude	Longitude	Elev (ft)	
Beaver Swamp	N43° 5.101'	W122° 31.130'	3,075	DO NOT USE	Elephant Lake	N43° 35.739'	W122° 39.234'	5,127 OK With Consult
Fish Lake	N43° 4.680'	W122° 30.213'	3,370	DO NOT USE	Blue Bluff Pond	N42° 54.762'	W122° 50.232'	2,256 OK With Consult
Willow Flats Sump	N43° 15.198'	W122° 47.735'	4,015	DO NOT USE	Drew Lake	N42° 47.200'	W122° 56.400'	3,666 OK With Consult
Beaver Pond	N43° 22.712'	W122° 33.711'	3,142	DO NOT USE	Podunk Pond	N43° 6.606'	W122° 52.129'	3,156 OK With Consult
Blodgett Heli Well	N43° 40.957'	W122° 43.614'	2,039	OK	Skookum Pond	N43° 0.529'	W122° 35.831'	3,494 OK With Consult
Dinner Ridge Heli Well Tank	N43° 41.286'	W122° 41.033'	2,433	OK	Stump Lake	N43° 14.732'	W122° 16.817'	3,860 OK With Consult
Cottage Grove Lake	N43° 42.277'	W123° 3.962'	791	OK	Alligator Pond	N43° 7.505'	W122° 36.171'	2,908 OK With Consult
Dorena Lake	N43° 46.209'	W122° 54.912'	832	OK	Cliff Lake	N43° 3.625'	W122° 30.995'	4,267 OK With Consult
Lookout Reservoir	N43° 50.688'	W122° 37.504'	929	OK	Shadow Pond	N43° 0.425'	W122° 51.456'	1,906 OK With Consult
Hills Creek Reservoir	N43° 40.250'	W122° 25.463'	1,542	OK	Triangle Lake	N43° 1.693'	W122° 28.902'	4,546 OK With Consult
Chicoot Ridge	N43° 24.332'	W122° 42.816'	4,151	OK	Gertrude Lake	N43° 35.703'	W122° 32.452'	4,787 Restricted
Curtus Lake	N43° 7.194'	W122° 57.017'	2,469	OK	Emile Sump	N43° 14.809'	W122° 46.723'	4,195 Restricted
Lemon Butte	N43° 29.117'	W122° 39.457'	3,012	OK	Fuller Lake	N43° 24.148'	W122° 29.665'	4,902 Restricted
Cinderella Springs	N43° 14.410'	W122° 40.319'	4,045	OK	Steamboat	N43° 21.186'	W122° 44.188'	1,285 Restricted
Steamboat Heli Dip	N43° 21.324'	W122° 43.723'	1,527	OK	Hemlock Lake	N43° 11.281'	W122° 42.106'	4,408 Restricted
Red Butte	N43° 10.069'	W122° 54.721'	3,795	OK	Carmen Lake	N43° 7.016'	W122° 35.194'	2,426 Restricted
Reynolds Ridge	N43° 23.639'	W122° 30.910'	5,138	OK	Ash Pond	N43° 3.538'	W122° 43.762'	2,142 Restricted
Red Top Reservoir	N43° 4.971'	W122° 57.423'	3,796	OK	Loletta Lake	N43° 23.892'	W122° 25.981'	5,322 Restricted
Fish Creek Forebay	N43° 16.173'	W122° 27.391'	3,024	OK	Lemolo Two Forebay	N43° 17.508'	W122° 24.394'	4,142 Restricted
Clearwater No 1 Forebay	N43° 15.369'	W122° 18.935'	3,872	OK	Toketee Lake	N43° 16.022'	W122° 24.896'	2,425 Restricted
Calamut	N43° 21.944'	W122° 6.530'	5,890	OK	Lemolo Lake	N43° 18.726'	W122° 10.346'	4,142 Restricted
Skookum Lake	N43° 10.007'	W122° 20.133'	5,540	OK	Lemolo One Forebay	N43° 21.647'	W122° 13.182'	4,066 Restricted
Wolf Lake	N43° 8.930'	W122° 27.073'	5,465	OK	Diamond Lake	N43° 8.363'	W122° 9.417'	5,183 Restricted
Buckeye Lake	N43° 3.770'	W122° 31.341'	4,189	OK	Twin Lakes	N43° 13.745'	W122° 35.518'	5,031 Restricted
Lumpy Sump	N43° 13.605'	W122° 40.982'	4,089	OK	Bradley Lake	N43° 24.456'	W122° 28.294'	5,187 Restricted
Red Top Spring Heli Dip	N43° 4.821'	W122° 57.359'	3,824	OK	Bullpup Lake	N43° 25.926'	W122° 30.284'	4,703 Restricted
Timhat Pond	N42° 58.780'	W122° 56.858'	2,631	OK	Cavitt Creek Heli Dip	N43° 9.155'	W122° 59.564'	1,564 Restricted
Patterson Heli well	N43° 45.335'	W122° 39.124'	2,740	OK	Hades Pond	N43° 11.490'	W122° 50.235'	2,935 Restricted
					Lake in the Woods	N43° 13.002'	W122° 43.439'	4,008 Restricted

**Umpqua North Complex**  
**Aerial Operations**  
**OR-UPF-000406**  
**August 30, 2017**  
**23,501 Total Acres**  
**As of 8/29 @ 2218**



⊙	Camp	—	Powerline
●	Drop Point	⊞	TFR
⊞	Helibase	⊞	Wildfire Daily Fire Perimeter
⊞	Unimproved Landing Area	⊞	Aerial Fire Retardant Avoidance Area
⊞	Helispot	⊞	Umpqua North Complex
⊞	Incident Command Post	⊞	Bureau of Land Management
⊞	Mobile Weather Unit	⊞	National Park Service
⊞	Repeater	⊞	Private
⊞	Safety Zone	⊞	United States Forest Service
⊞	Spot Fire		
⊞	Water Source		
⊞	Division Break		
⊞	Branch Break		
⊞	Aerial Obstructions		

⊞	OK
⊞	Do Not Use
⊞	OK With Consult
⊞	Restricted

**Dip Sites**

0 1 2 Miles

Type	Name	Lat N	Long W	Elev (ft)
Helibase	Glide	43 18.909	123 4.376	766
Helispot	Steamboat	43 21.301	122 43.740	1,505
Helispot	Toketee Airstrip	43 13.662	122 25.665	3,072
Helispot	H-1	43 16.535	122 53.870	3,474
Helispot	H-5	43 16.418	122 49.217	609
Helispot	H-30	43 20.94	122 33.77	5,400
Helispot	H-40	43 15.946	122 25.038	2,522
Helispot	H-50	43 21.633	122 13.173	4,045
Helispot	H-60	43 09.367	122 13.082	8,363
Camp	Broken Arrow Spike	43 07.838	122 08.693	
Camp	Sand Shed Spike	43 15.474	122 11.358	
Safety Zone	East end of #398	43 15.30	122 36.78	
Safety Zone	Illahee	43 17.555	122 35.540	
Unimproved Landing Area	in Branch IV	43 23.854	122 31.275	
Unimproved Landing Area	in Branch V	43 19.915	122 33.464	
Unimproved Landing Area	Branch III - Div Y	43 11.278	122 18.163	
Unimproved Landing Area	Branch III - DP-333	43 12.061	122 22.792	
Unimproved Landing Area	Branch III - DP-360	43 10.979	122 29.007	
Unimproved Landing Area	Branch II - 4770-415 S	43 19.110	122 34.692	
Unimproved Landing Area	Branch III - DP-380	43 15.180	122 28.559	
Water Source	Dip Site	43 22.434	122 38.546	
Lookout		43 15.251	122 34.65	

123°4'W 123°2'W 123°0'W 122°58'W 122°56'W 122°54'W 122°52'W 122°50'W 122°48'W 122°46'W 122°44'W 122°42'W 122°40'W 122°38'W 122°36'W 122°34'W 122°32'W 122°30'W 122°28'W 122°26'W 122°24'W 122°22'W 122°20'W 122°18'W 122°16'W 122°14'W 122°12'W

43°31'N 43°30'N 43°29'N 43°28'N 43°27'N 43°26'N 43°25'N 43°24'N 43°23'N 43°22'N 43°21'N 43°20'N 43°19'N 43°18'N 43°17'N 43°16'N 43°15'N 43°14'N 43°13'N 43°12'N 43°11'N 43°10'N 43°9'N 43°8'N 43°7'N 43°6'N 43°5'N 43°4'N 43°3'N 43°2'N

123°4'W 123°2'W 123°0'W 122°58'W 122°56'W 122°54'W 122°52'W 122°50'W 122°48'W 122°46'W 122°44'W 122°42'W 122°40'W 122°38'W 122°36'W 122°34'W 122°32'W 122°30'W 122°28'W 122°26'W 122°24'W 122°22'W 122°20'W 122°18'W 122°16'W 122°14'W 122°12'W