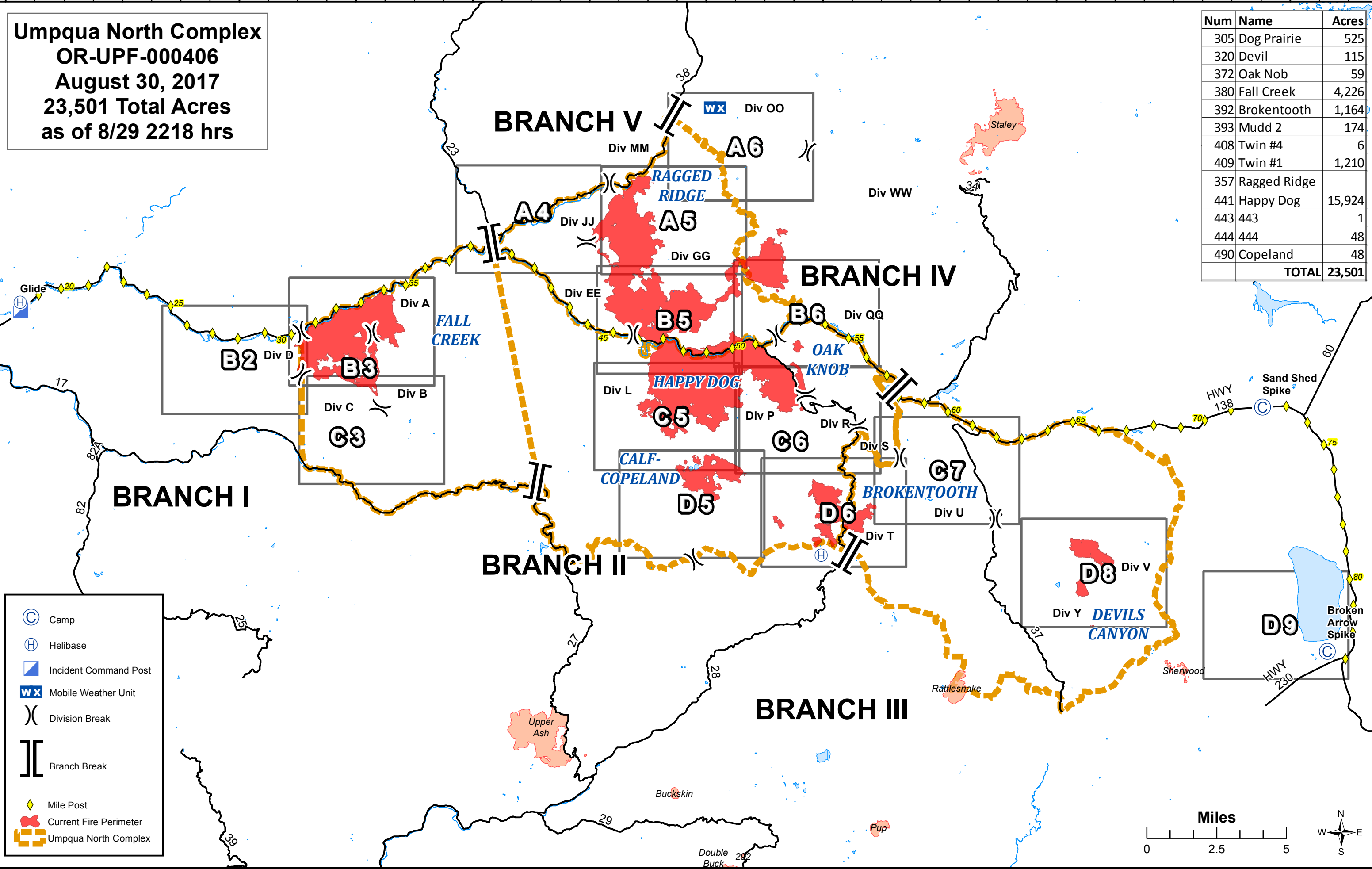
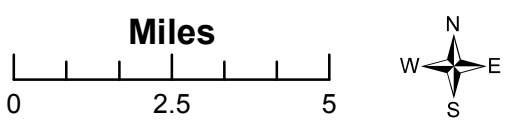


Umpqua North Complex
OR-UPF-000406
August 30, 2017
23,501 Total Acres
as of 8/29 2218 hrs

Num	Name	Acres
305	Dog Prairie	525
320	Devil	115
372	Oak Nob	59
380	Fall Creek	4,226
392	Broketooth	1,164
393	Mudd 2	174
408	Twin #4	6
409	Twin #1	1,210
357	Ragged Ridge	
441	Happy Dog	15,924
443	443	1
444	444	48
490	Copeland	48
TOTAL		23,501



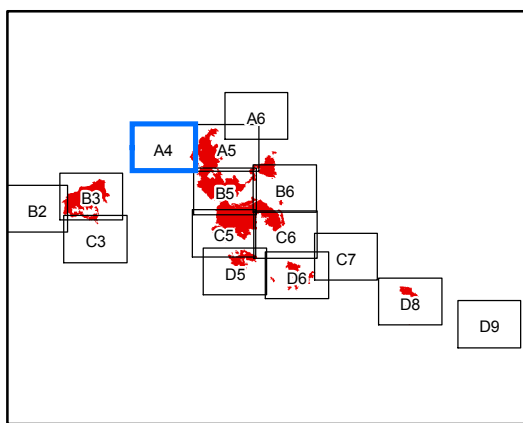
- Camp
- Helibase
- Incident Command Post
- Mobile Weather Unit
- Division Break
- Branch Break
- Mile Post
- Current Fire Perimeter
- Umpqua North Complex



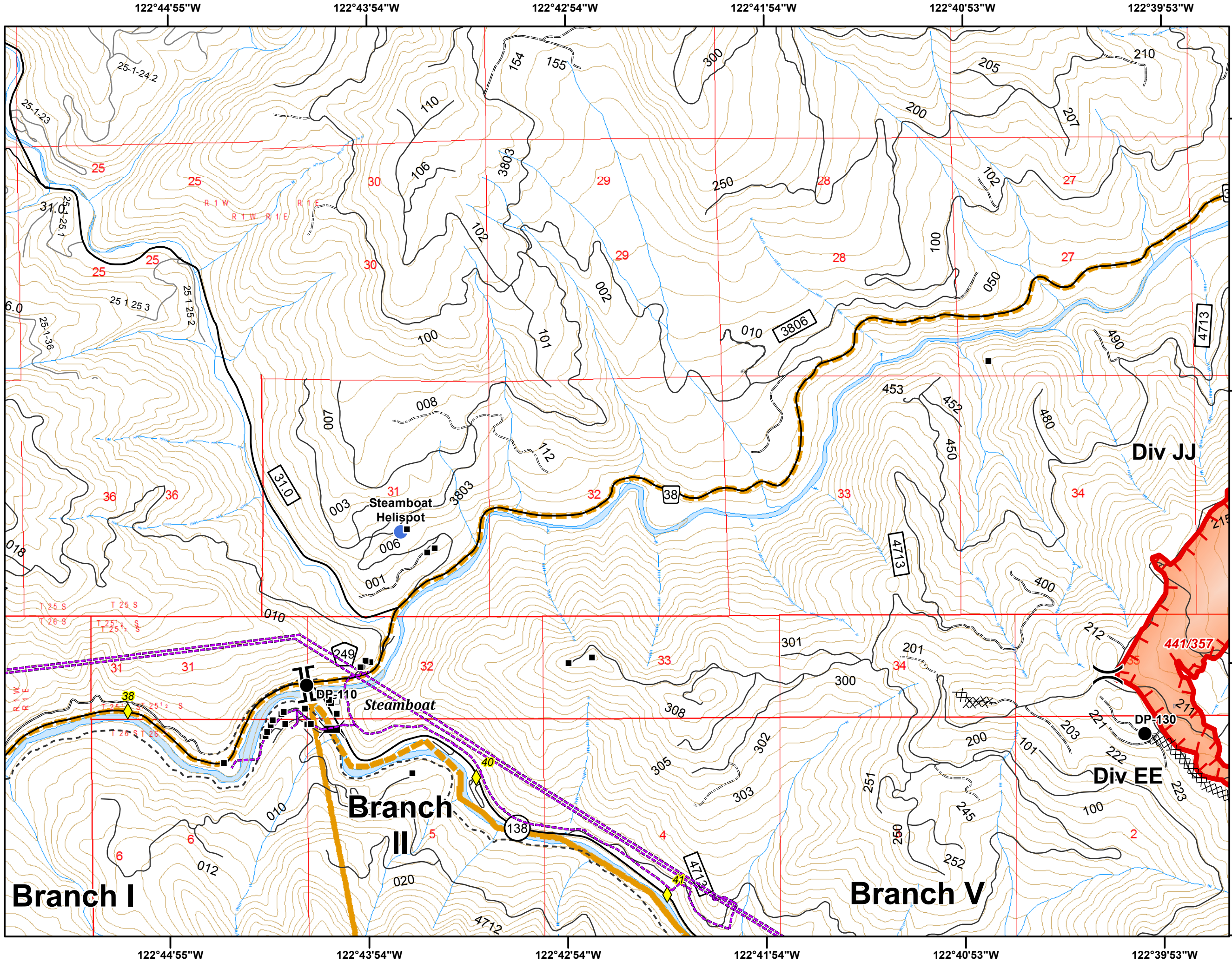
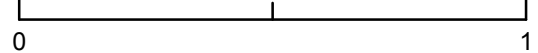
Umpqua North Complex
OR-UPF-000406
8/30/2017
23,501 Total Acres
as of 8/29 2218 hrs
A4
1:24,000
NAD 83 UTM Zone 10N



- Mile Post
- Structure
- Bridge
- Drop Point
- Helispot
- Division Break
- Branch Break
- Parking Area
- Uncontrolled Fire Edge
- Completed Dozer Line
- Powerline
- Umpqua North Complex



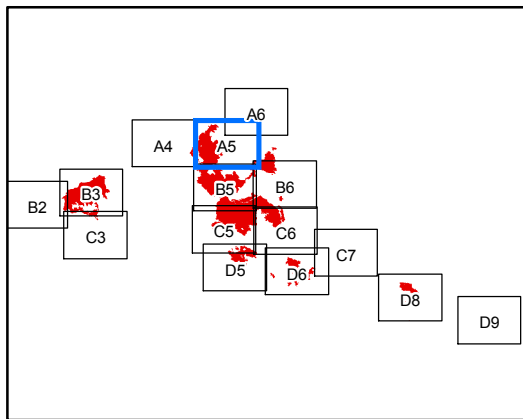
Miles



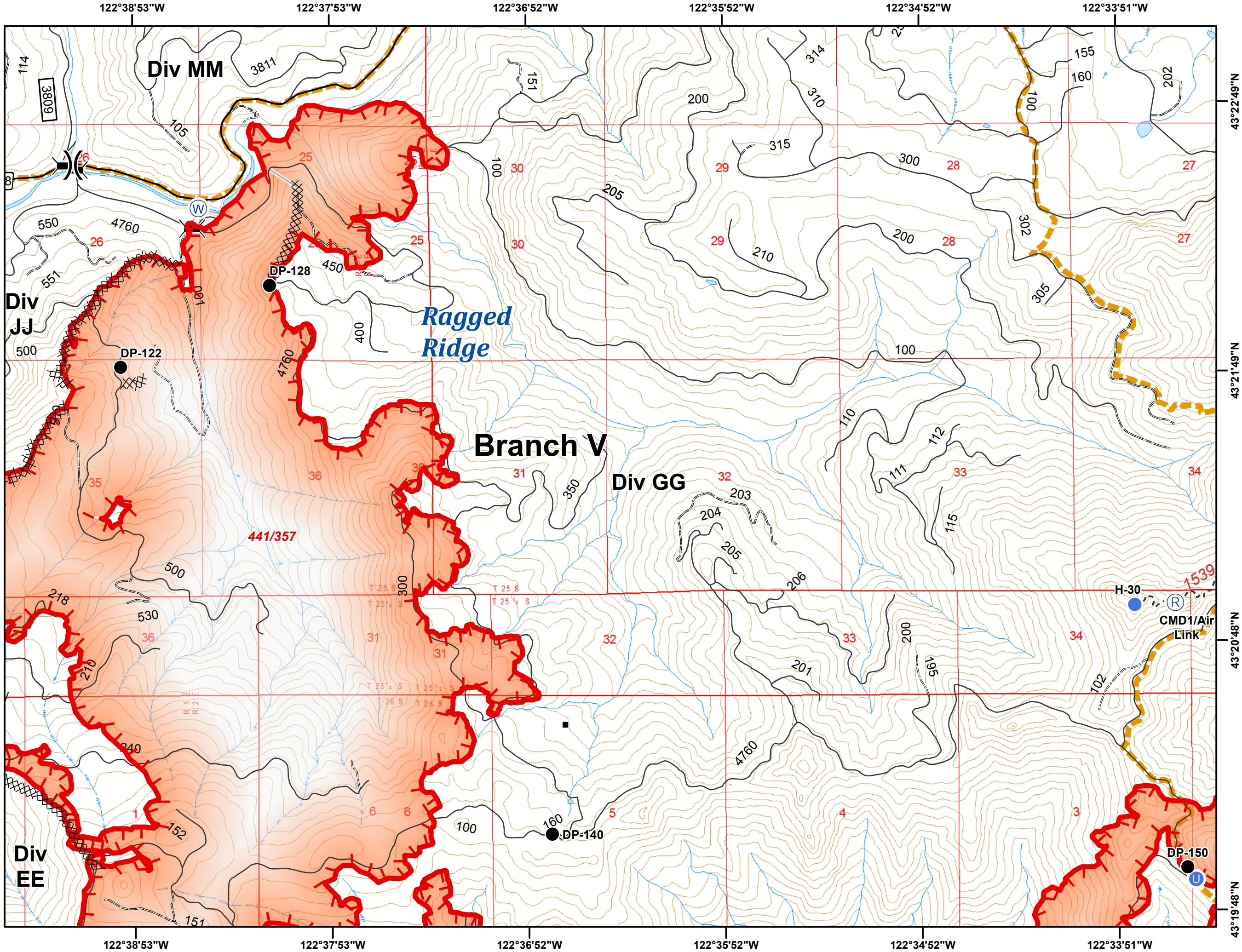
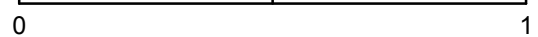
Umpqua North Complex
OR-UPF-000406
8/30/2017
23,501 Total Acres
as of 8/29 2218 hrs
A5
1:24,000
NAD 83 UTM Zone 10N



- Structure
- ⌵ Bridge
- Drop Point
- Ⓚ Unimproved Landing Area
- Helispot
- Ⓜ Repeater
- Ⓜ Water Source
- ⌵ Division Break
- └─ Uncontrolled Fire Edge
- XXXXX Completed Dozer Line
- Completed Hand Line
- ▣ Umpqua North Complex



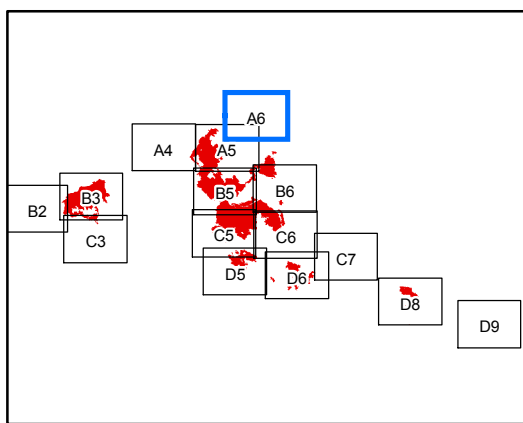
Miles



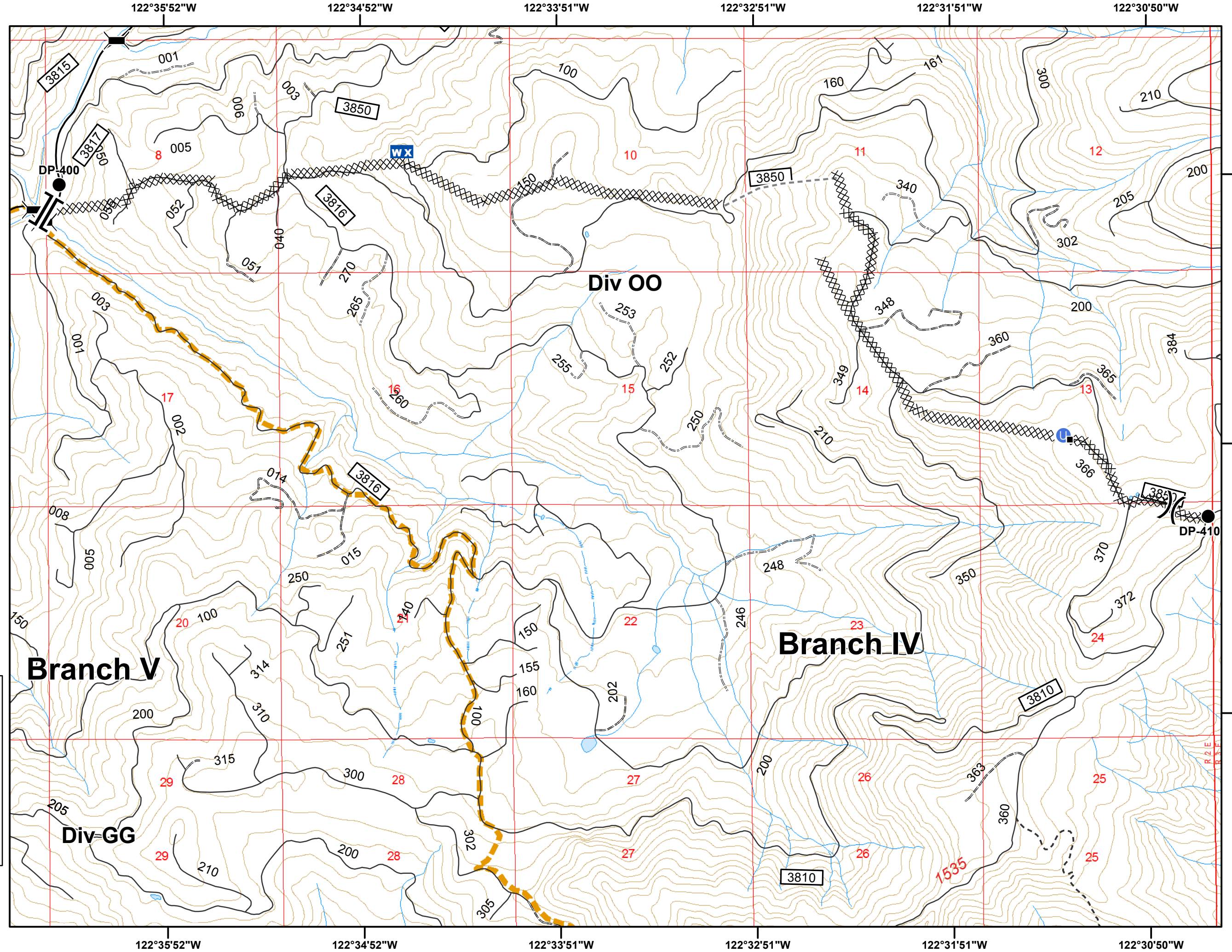
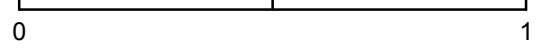
Umpqua North Complex
OR-UPF-000406
8/30/2017
23,501 Total Acres
as of 8/29 2218 hrs
A6
1:24,000
NAD 83 UTM Zone 10N



- Structure
- ▬ Bridge
- Drop Point
- U Unimproved Landing Area
- WX Mobile Weather Unit
-) Division Break
- || Branch Break
- XXXXX Completed Dozer Line
- Proposed Handline
- Umpqua North Complex



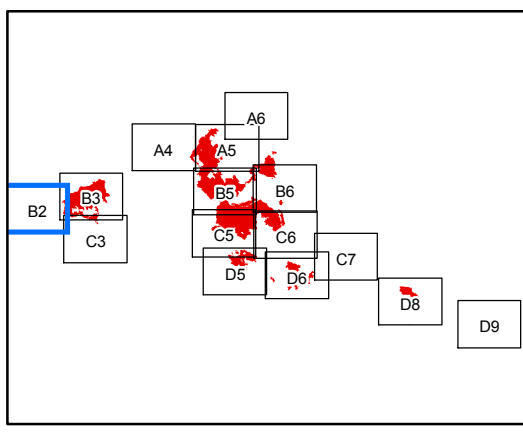
Miles



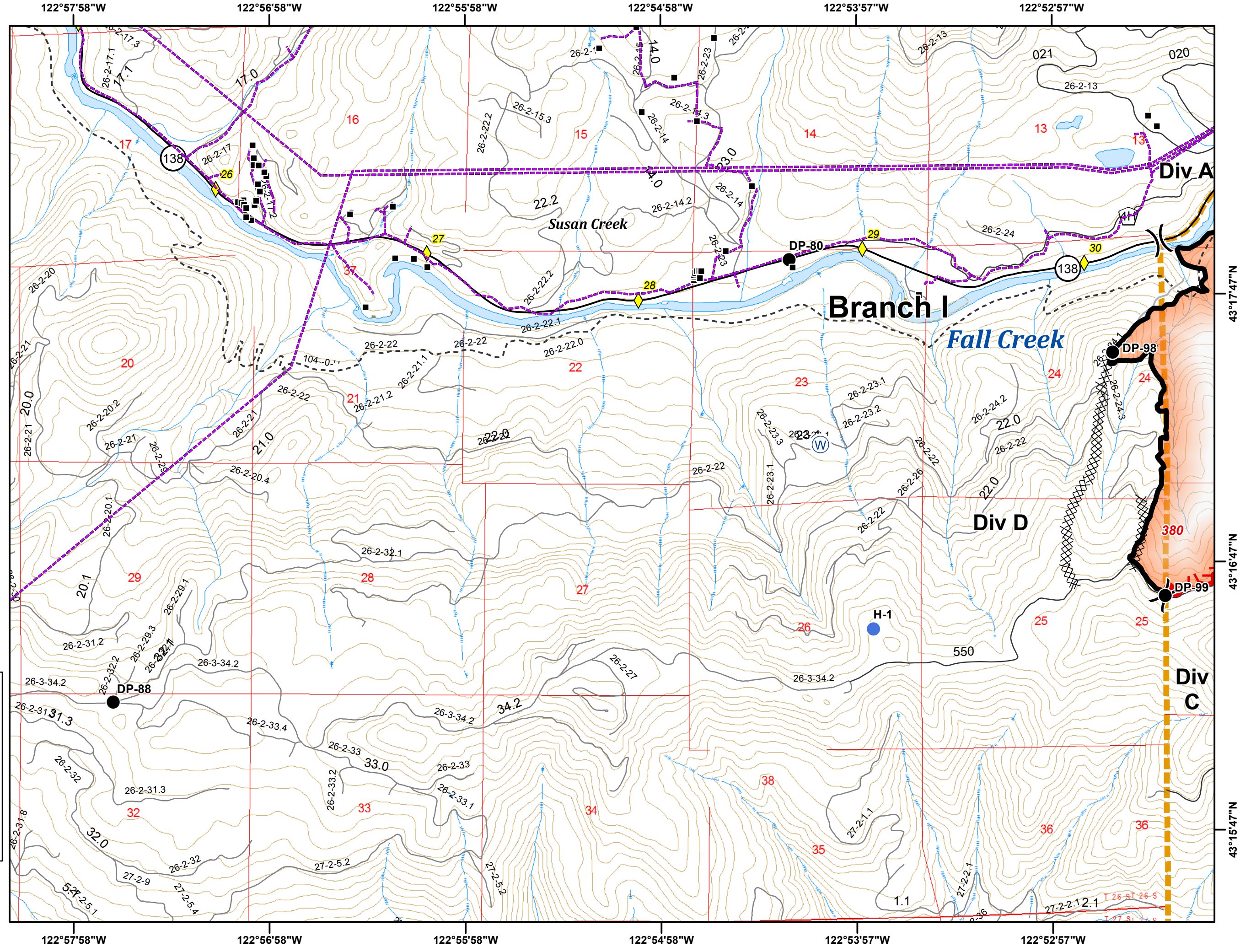
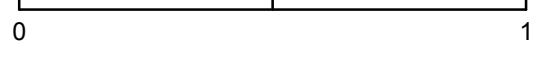
Umpqua North Complex
OR-UPF-000406
8/30/2017
23,501 Total Acres
as of 8/29 2218 hrs
B2
1:24,000
NAD 83 UTM Zone 10N



- Mile Post
- Structure
- Drop Point
- Helispot
- Water Source
- Division Break
- Uncontrolled Fire Edge
- Completed Line
- Completed Dozer Line
- Completed Hand Line
- Powerline
- Umpqua North Complex



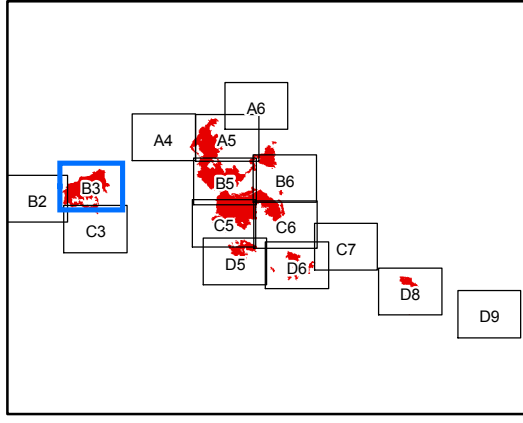
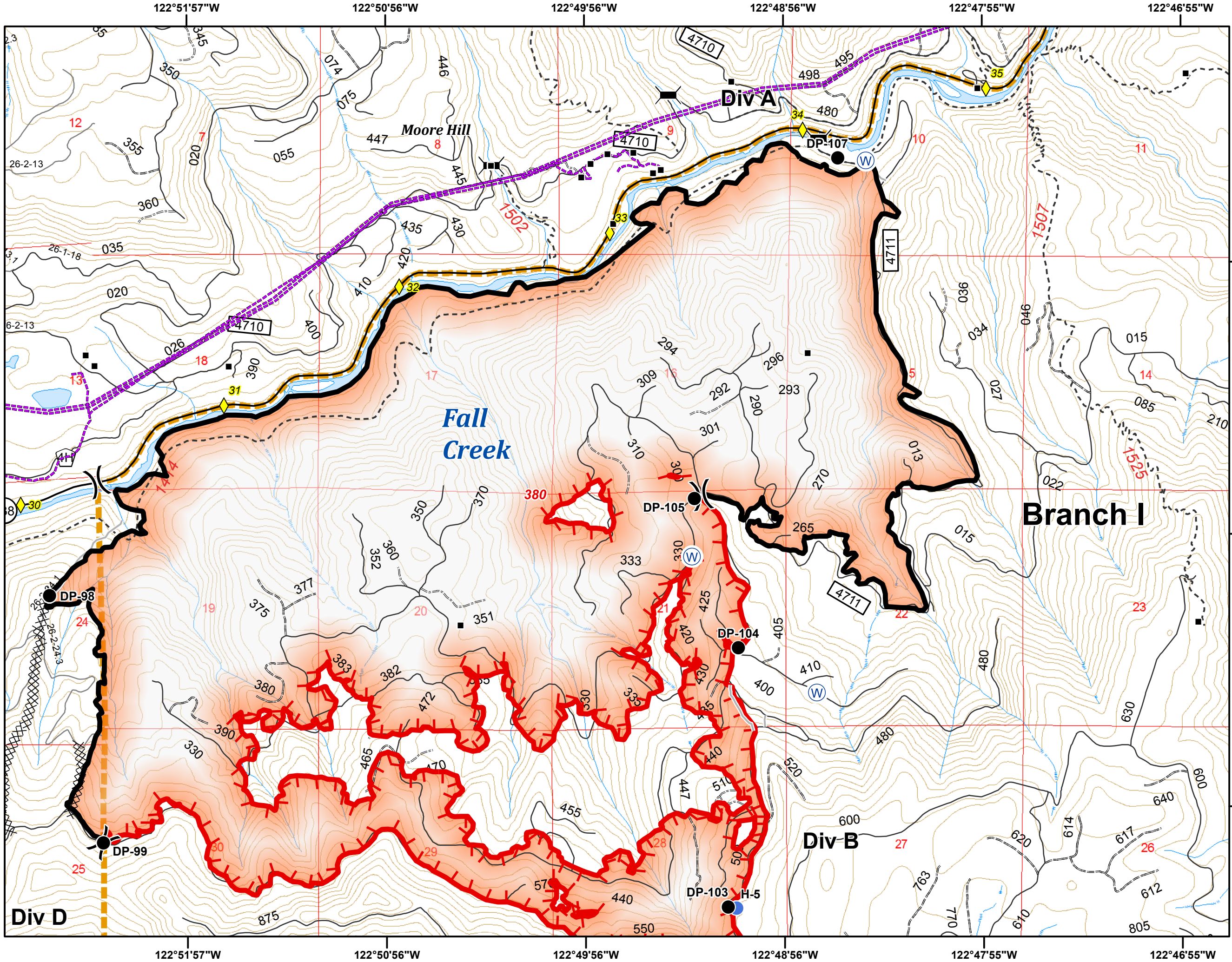
Miles



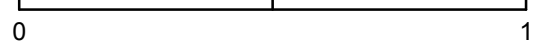
Umpqua North Complex
OR-UPF-000406
8/30/2017
23,501 Total Acres
as of 8/29 2218 hrs
B3
1:24,000
NAD 83 UTM Zone 10N



- Mile Post
- Structure
- Bridge
- Drop Point
- Helispot
- Spot Fire
- Water Source
- Division Break
- Uncontrolled Fire Edge
- Completed Line
- Completed Dozer Line
- Completed Hand Line
- Powerline
- Umpqua North Complex



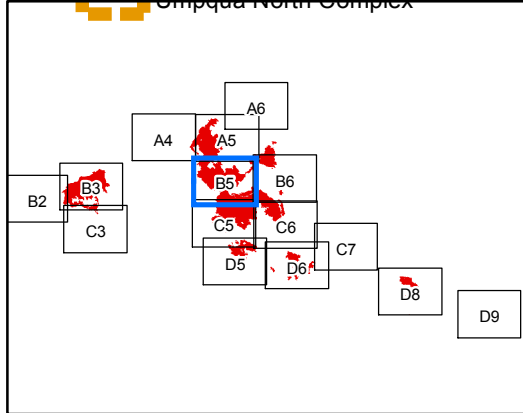
Miles



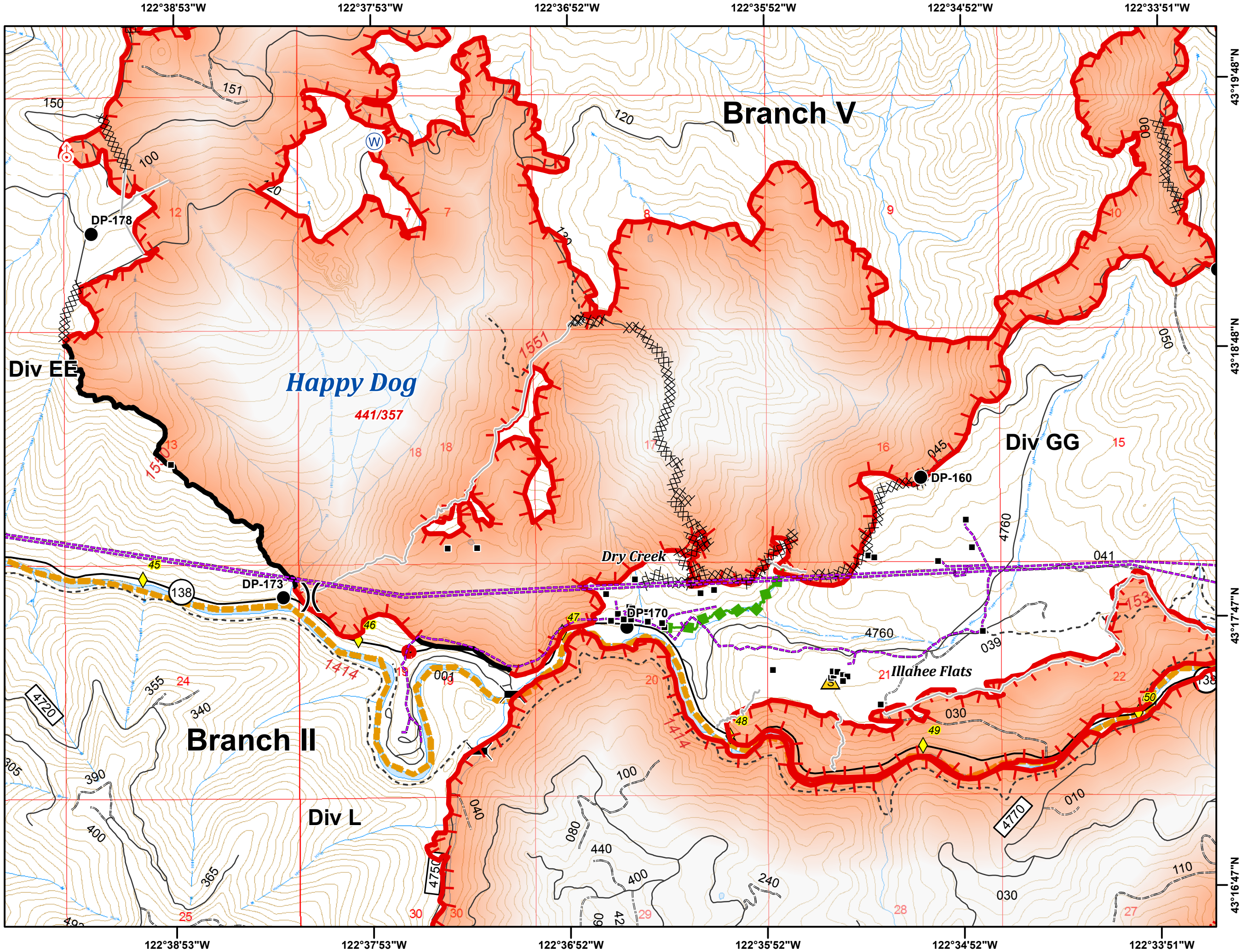
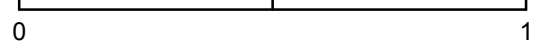
Umpqua North Complex
OR-UPF-000406
8/30/2017
23,501 Total Acres
as of 8/29 2218 hrs
B5
1:24,000
NAD 83 UTM Zone 10N



- Mile Post
- Structure
- Bridge
- Drop Point
- Safety Zone
- Spot Fire
- Water Source
- Division Break
- Uncontrolled Fire Edge
- Completed Line
- Completed Dozer Line
- Completed Hand Line
- Escape Route
- Powerline
- Umpqua North Complex



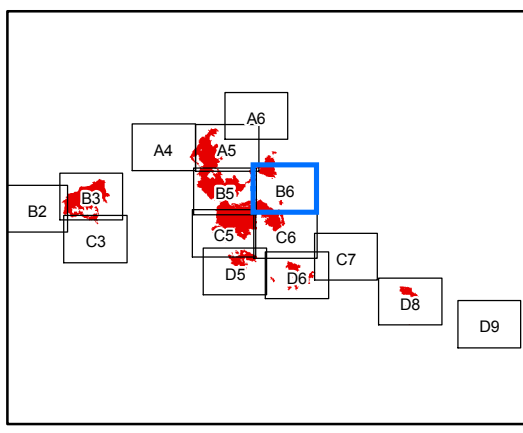
Miles



Umpqua North Complex
OR-UPF-000406
8/30/2017
23,501 Total Acres
as of 8/29 2218 hrs
B6
1:24,000
NAD 83 UTM Zone 10N

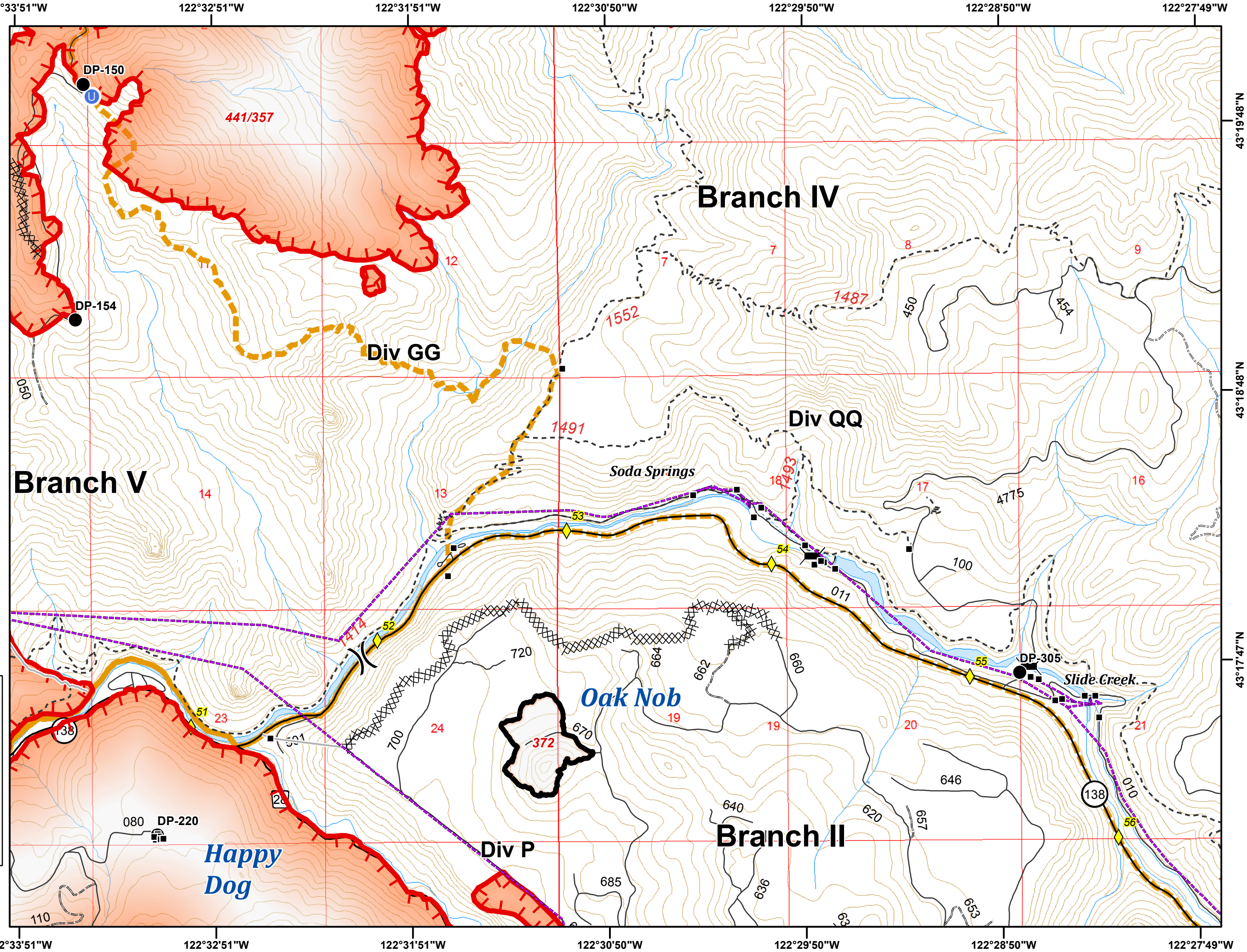


- Mile Post
- Structure
- Bridge
- Drop Point
- Unimproved Landing Area
- Division Break
- Uncontrolled Fire Edge
- Completed Line
- Completed Dozer Line
- Completed Hand Line
- Powerline
- Umpqua North Complex



Miles

0 1



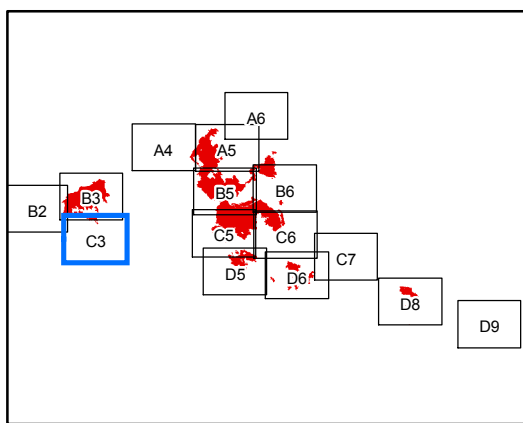
122°33'51"W 122°32'51"W 122°31'51"W 122°30'50"W 122°29'50"W 122°28'50"W 122°27'49"W

43°19'48"N 43°18'48"N 43°17'47"N

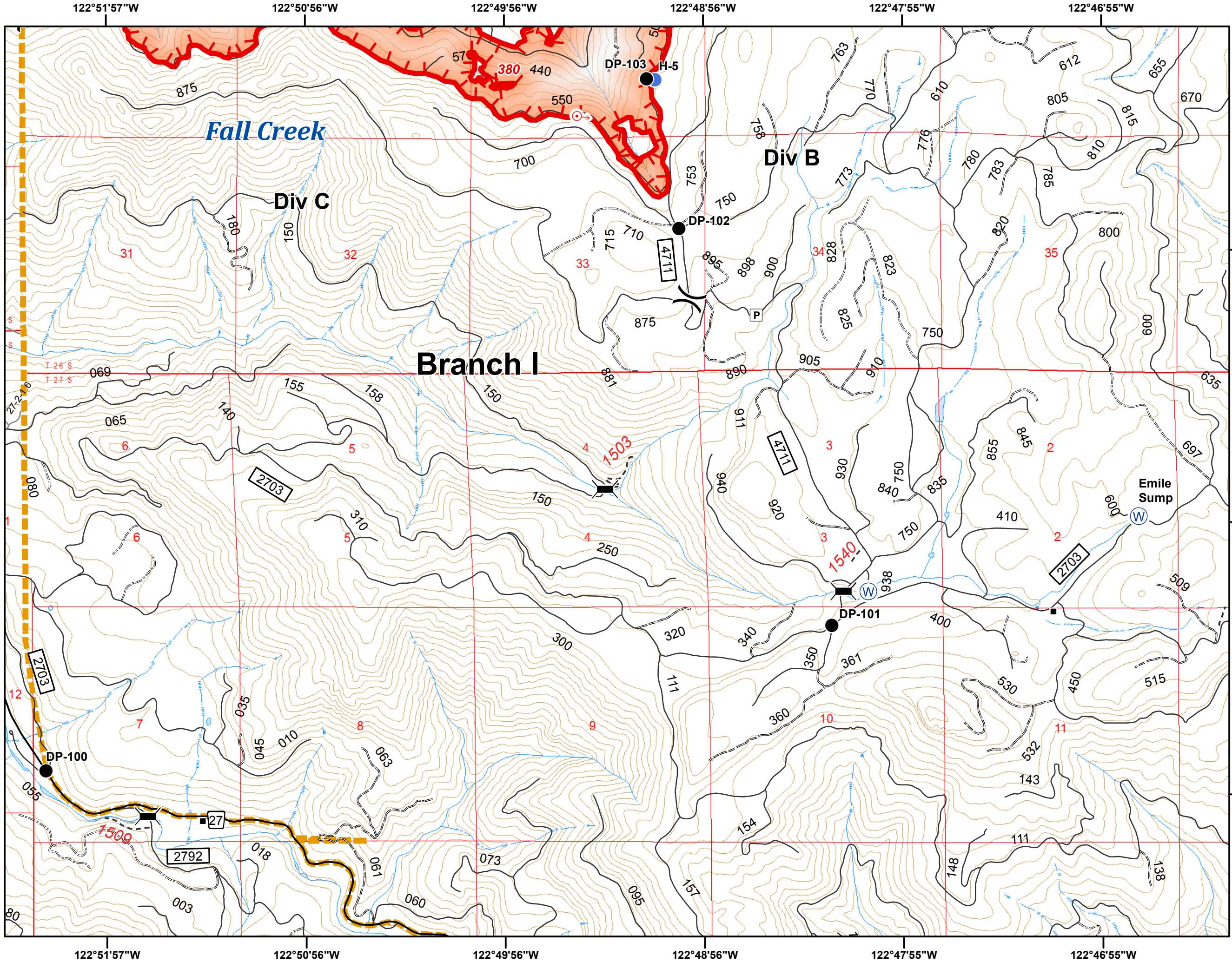
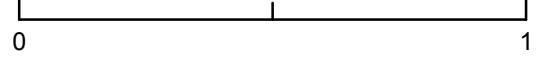
Umpqua North Complex
OR-UPF-000406
8/30/2017
23,501 Total Acres
as of 8/29 2218 hrs
C3
1:24,000
NAD 83 UTM Zone 10N



- Structure
- ⌒ Bridge
- Drop Point
- Helispot
- ⊕ Spot Fire
- ⊕ Water Source
- ⌒ Division Break
- Ⓟ Parking Area
- 🔥 Uncontrolled Fire Edge
- 🔲 Umpqua North Complex



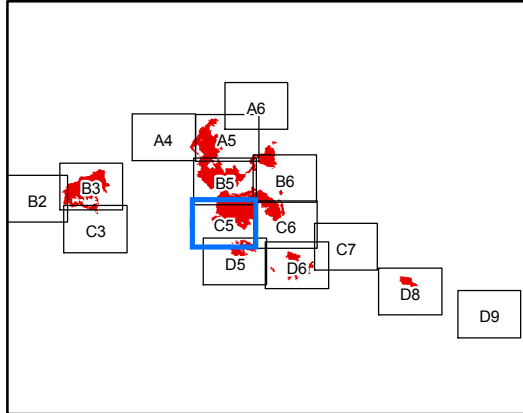
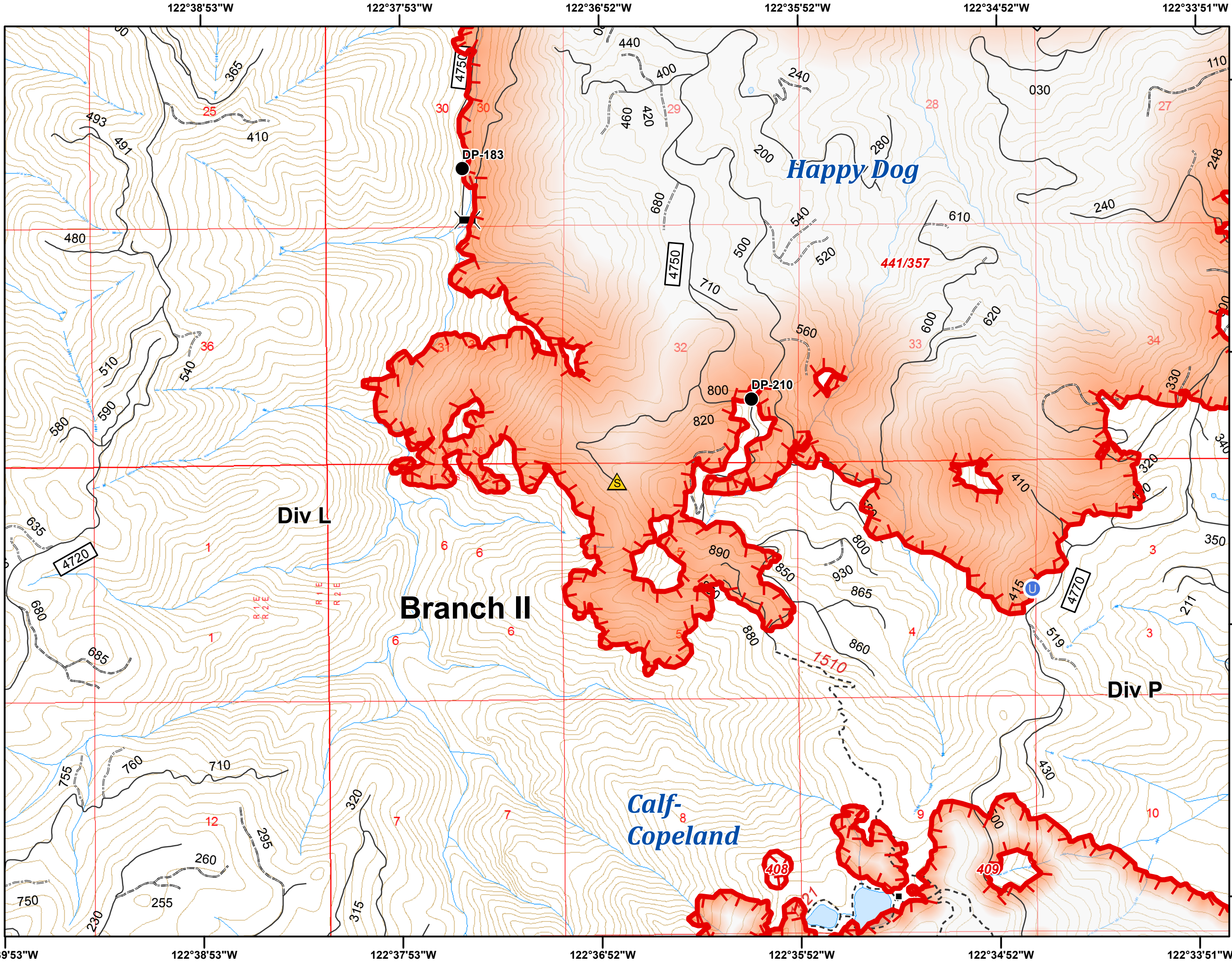
Miles



Umpqua North Complex
OR-UPF-000406
8/30/2017
23,501 Total Acres
as of 8/29 2218 hrs
C5
1:24,000
NAD 83 UTM Zone 10N



- Structure
- ▬ Bridge
- Drop Point
- U Unimproved Landing Area
- ▲ Safety Zone
- ┌─┐ Uncontrolled Fire Edge
- └─┘ Umpqua North Complex











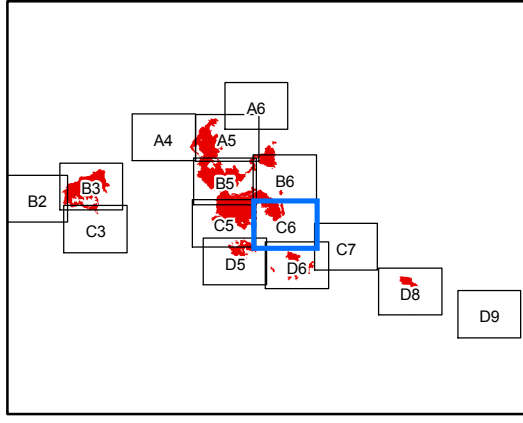
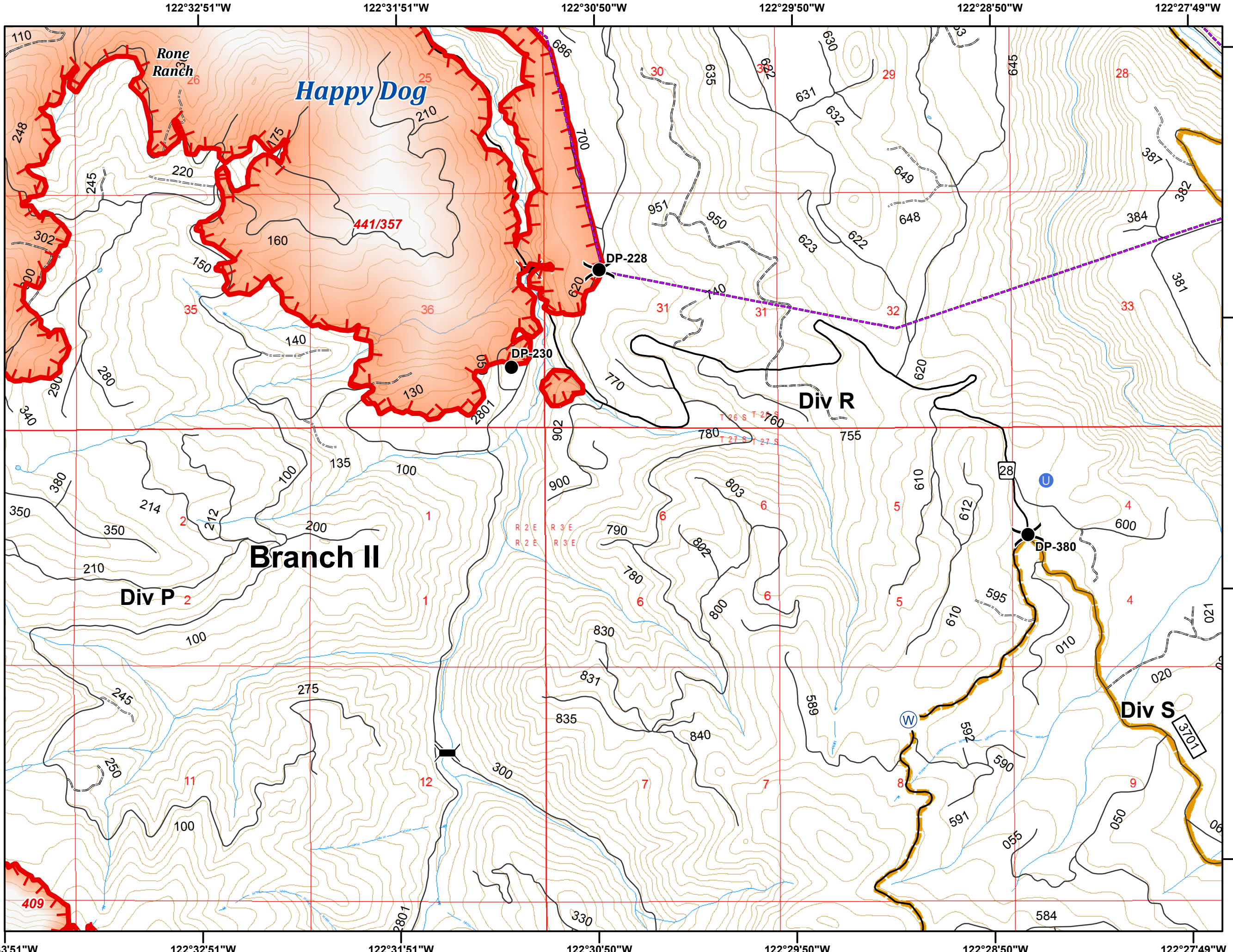
Miles

0 1 122°39'53"W 122°38'53"W 122°37'53"W 122°36'52"W 122°35'52"W 122°34'52"W 122°33'51"W
 43°13'46"N 43°14'47"N 43°15'47"N 43°16'47"N

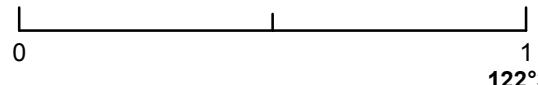
Umpqua North Complex
OR-UPF-000406
8/30/2017
23,501 Total Acres
as of 8/29 2218 hrs
C6
1:24,000
NAD 83 UTM Zone 10N



-  Bridge
-  Drop Point
-  Unimproved Landing Area
-  Water Source
-  Division Break
-  Uncontrolled Fire Edge
-  Powerline
-  Umpqua North Complex














Miles

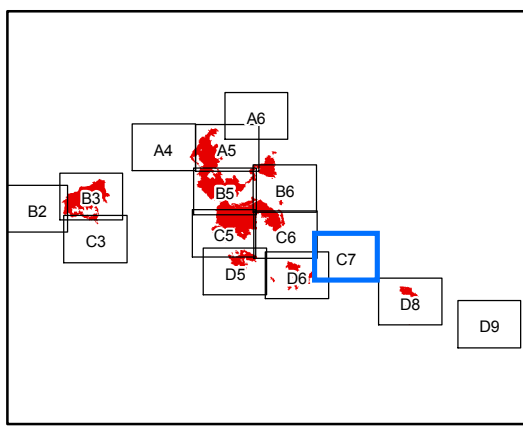
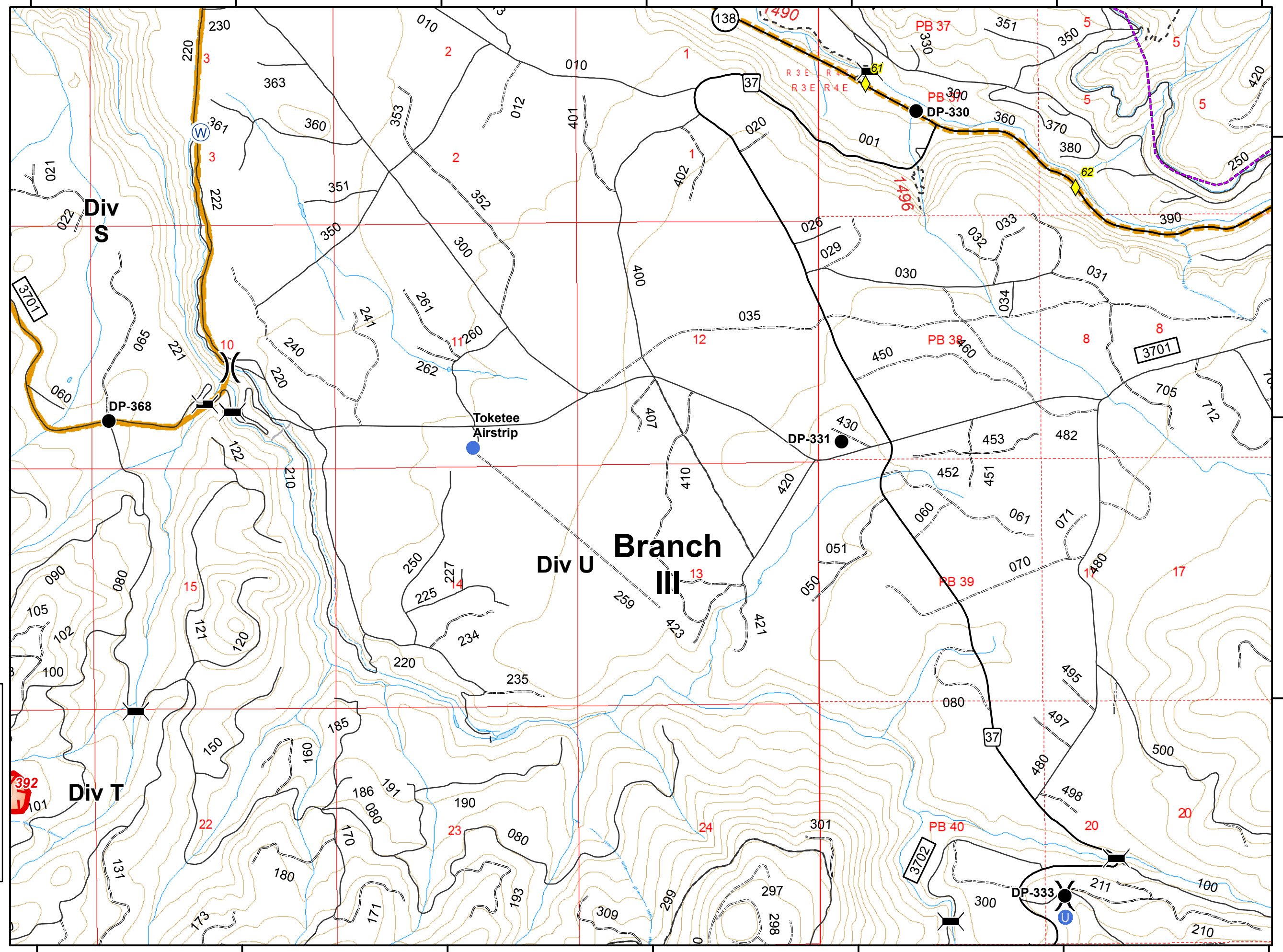


122°27'49"W 122°26'49"W 122°25'49"W 122°24'49"W 122°23'48"W 122°22'48"W 122°21'48"W

Umpqua North Complex
OR-UPF-000406
8/30/2017
23,501 Total Acres
as of 8/29 2218 hrs
C7
1:24,000
NAD 83 UTM Zone 10N



-  Mile Post
-  Bridge
-  Drop Point
-  Unimproved Landing Area
-  Helispot
-  Water Source
-  Division Break
-  Uncontrolled Fire Edge
-  Completed Hand Line
-  Powerline
-  Umpqua North Complex



Miles

0 1

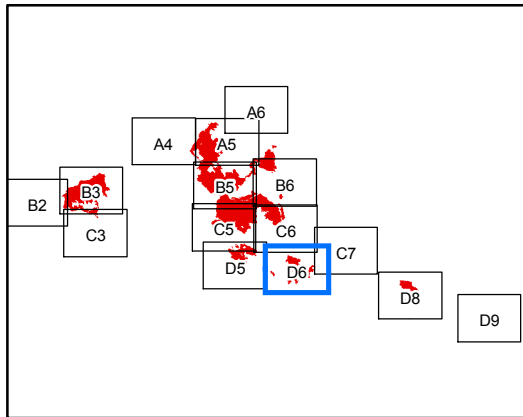
122°27'49"W 122°26'49"W 122°25'49"W 122°24'49"W 122°23'48"W 122°22'48"W 122°21'48"W

43°14'47"N
43°13'46"N
43°12'46"N

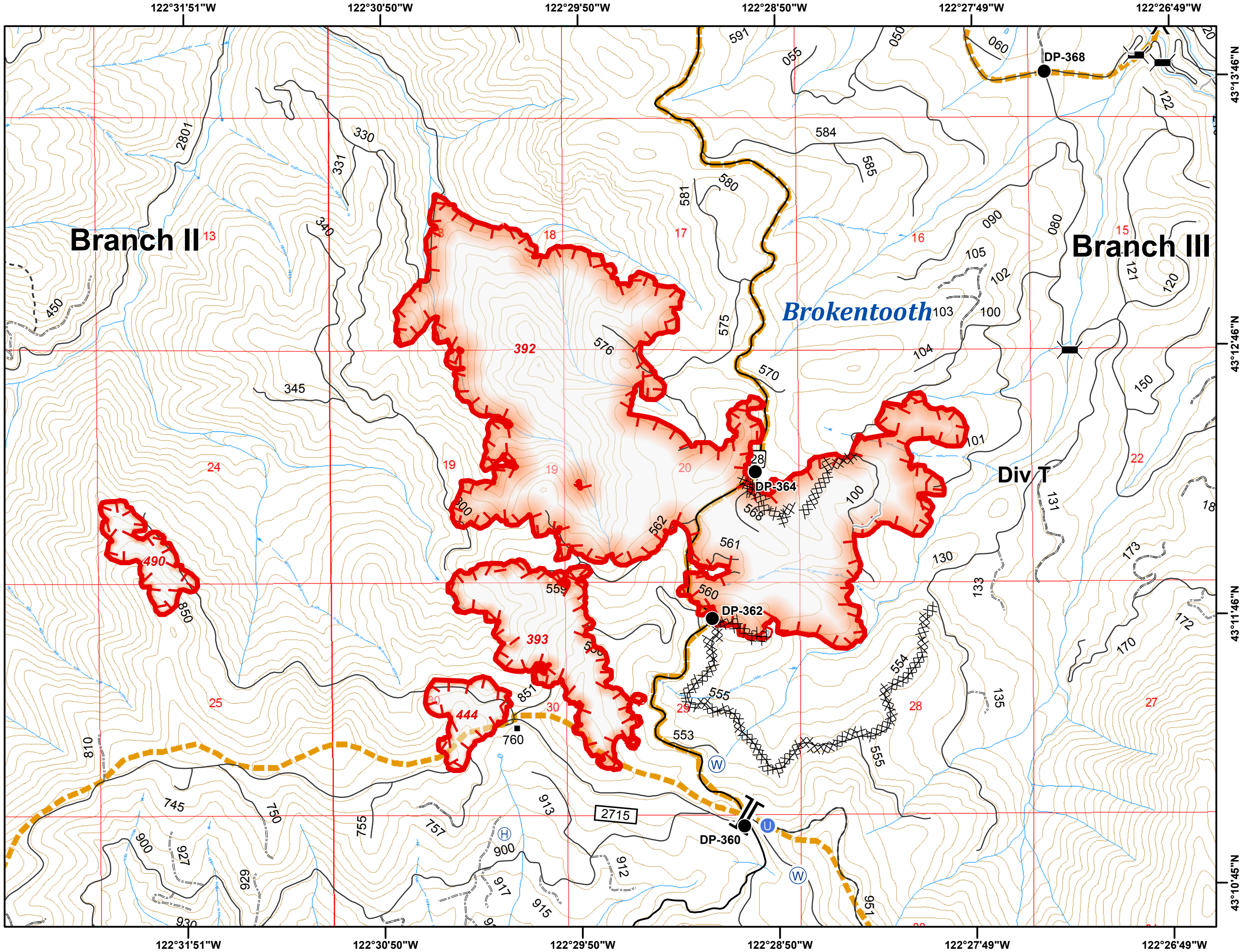
Umpqua North Complex
OR-UPF-000406
8/30/2017
23,501 Total Acres
as of 8/29 2218 hrs
D6
1:24,000
NAD 83 UTM Zone 10N



- Structure
- ⌘ Bridge
- Drop Point
- Ⓜ Helibase
- Ⓢ Unimproved Landing Area
- Ⓜ Water Source
- ⌘ Division Break
- ⌘ Branch Break
- ┌ Uncontrolled Fire Edge
- ⓧ Completed Dozer Line
- Completed Hand Line
- ▬ Umpqua North Complex



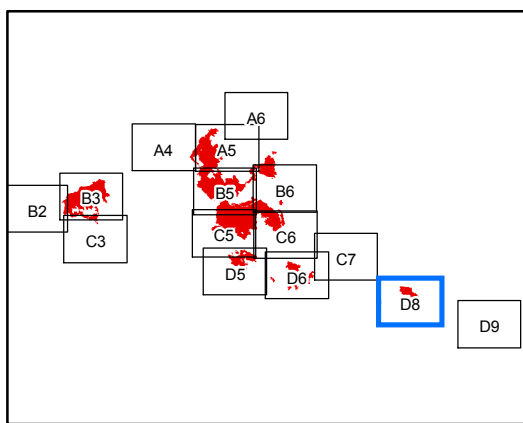
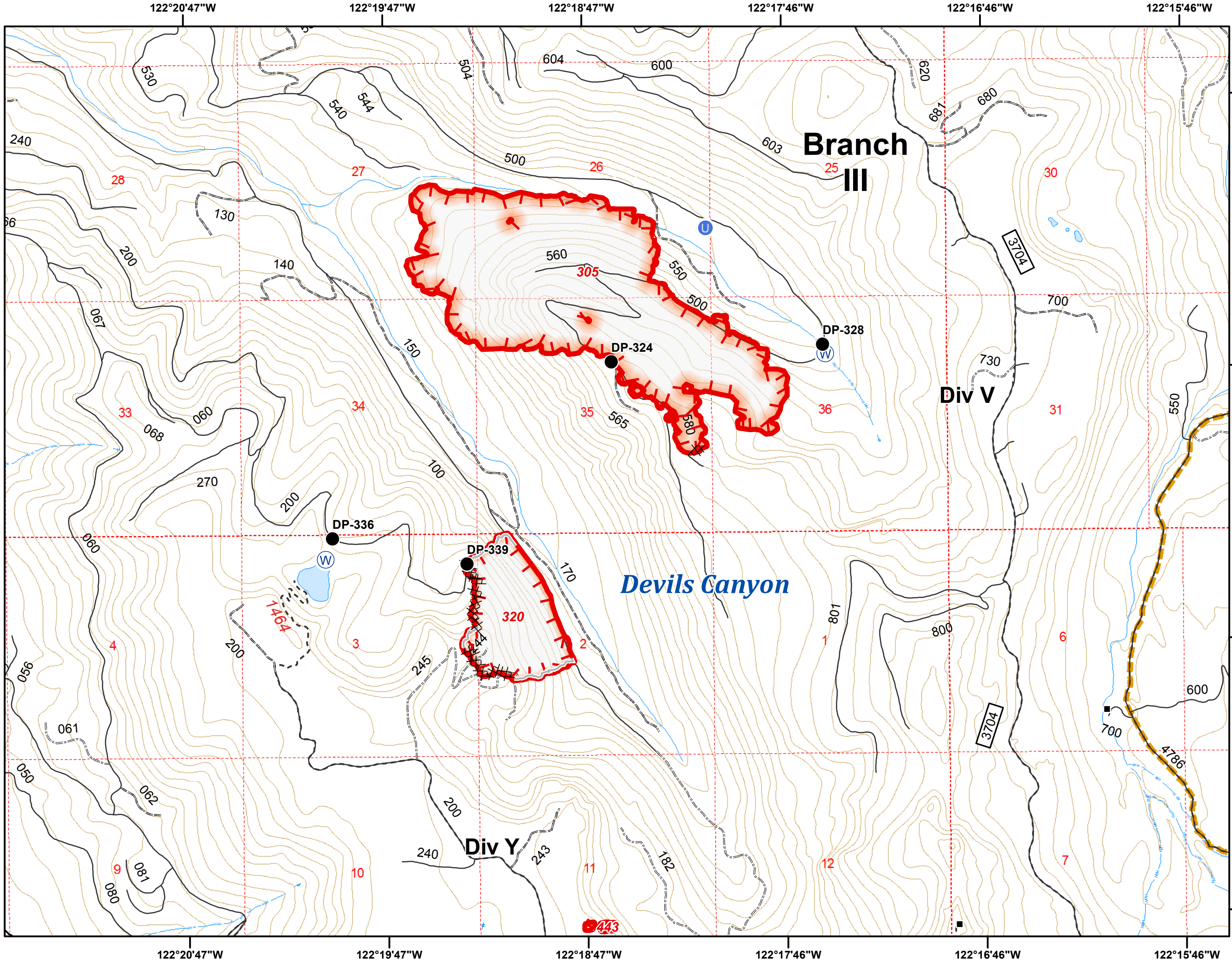
Miles



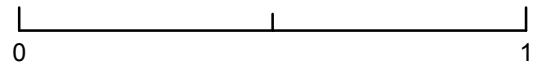
Umpqua North Complex
OR-UPF-000406
8/30/2017
23,501 Total Acres
as of 8/29 2218 hrs
D8
1:24,000
NAD 83 UTM Zone 10N



- Structure
- Drop Point
- U Unimproved Landing Area
- W Water Source
- ┌ Uncontrolled Fire Edge
- XXXX Completed Dozer Line
- Completed Hand Line
- ▣ Umpqua North Complex








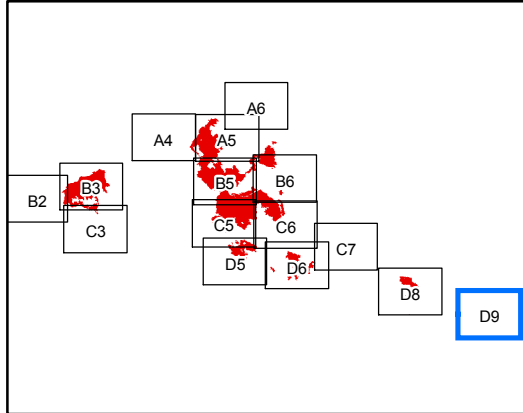
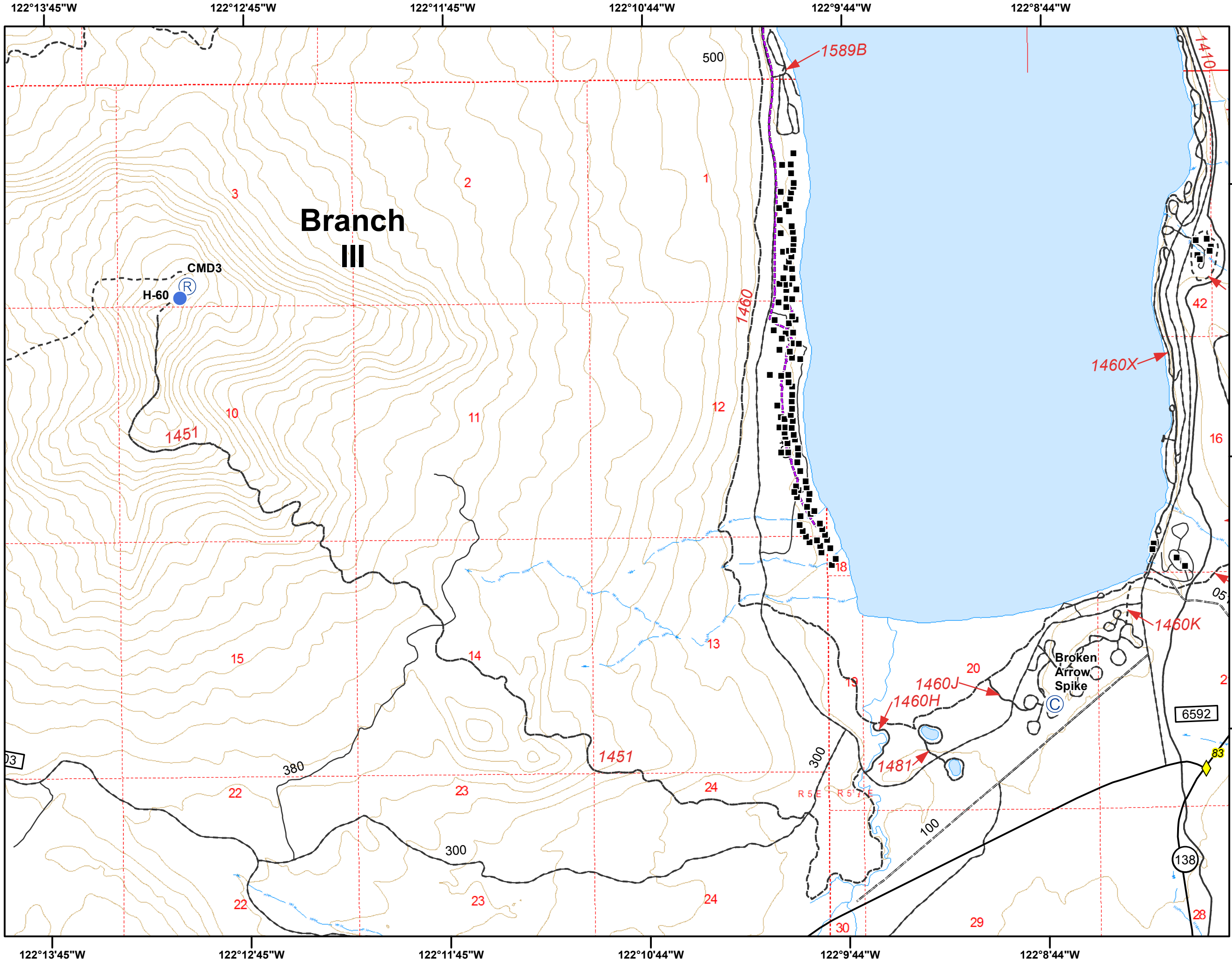
Miles



Umpqua North Complex
OR-UPF-000406
8/30/2017
23,501 Total Acres
as of 8/29 2218 hrs
D9
1:24,000
NAD 83 UTM Zone 10N



-  Mile Post
-  Structure
-  Camp
-  Helispot
-  Repeater



Miles

