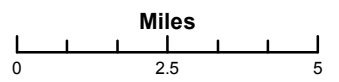
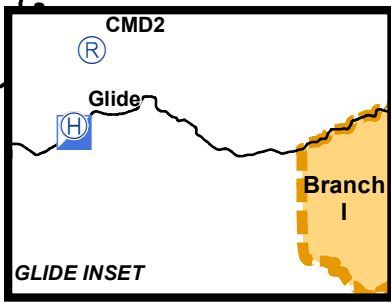
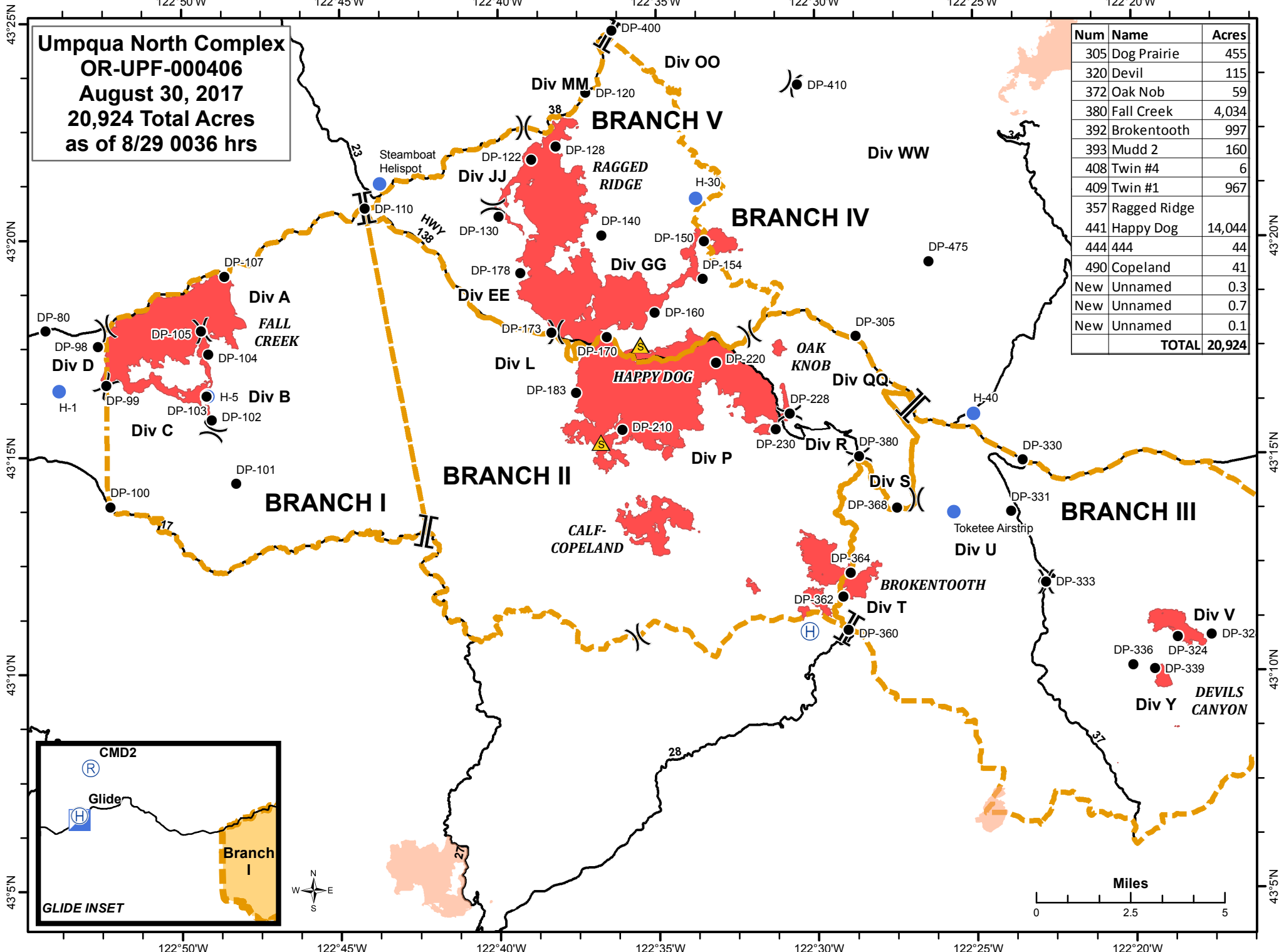


Umpqua North Complex
OR-UPF-000406
August 30, 2017
20,924 Total Acres
as of 8/29 0036 hrs

Num	Name	Acres
305	Dog Prairie	455
320	Devil	115
372	Oak Nob	59
380	Fall Creek	4,034
392	Brokentooth	997
393	Mudd 2	160
408	Twin #4	6
409	Twin #1	967
357	Ragged Ridge	
441	Happy Dog	14,044
444	444	44
490	Copeland	41
New	Unnamed	0.3
New	Unnamed	0.7
New	Unnamed	0.1
TOTAL		20,924



Map coordinates: 43°25'N to 43°5'N latitude, 122°50'W to 122°20'W longitude.

Branches: BRANCH I, BRANCH II, BRANCH III, BRANCH IV, BRANCH V.

Divisions: Div A, B, C, D, E, F, G, H, I, J, K, L, M, N, O, P, Q, R, S, T, U, V, W, X, Y.

Geographical Features: FALL CREEK, RAGGED RIDGE, HAPPY DOG, OAK KNOB, CALF-COPELAND, BROKENTOOOTH, DEVILS CANYON.

Points of Interest: DP-80, DP-98, DP-105, DP-104, DP-103, DP-102, DP-101, DP-100, DP-110, DP-122, DP-128, DP-140, DP-150, DP-154, DP-178, DP-173, DP-183, DP-210, DP-230, DP-228, DP-230, DP-380, DP-368, DP-364, DP-362, DP-360, DP-336, DP-324, DP-339, DP-32, DP-400, DP-120, DP-410, DP-475, DP-305, DP-330, DP-331, DP-333.

Helispots: Steamboat, H-1, H-5, H-30, H-40, Toketee Airstrip.

Highways: HWY 138, HWY 17, HWY 28, HWY 37.