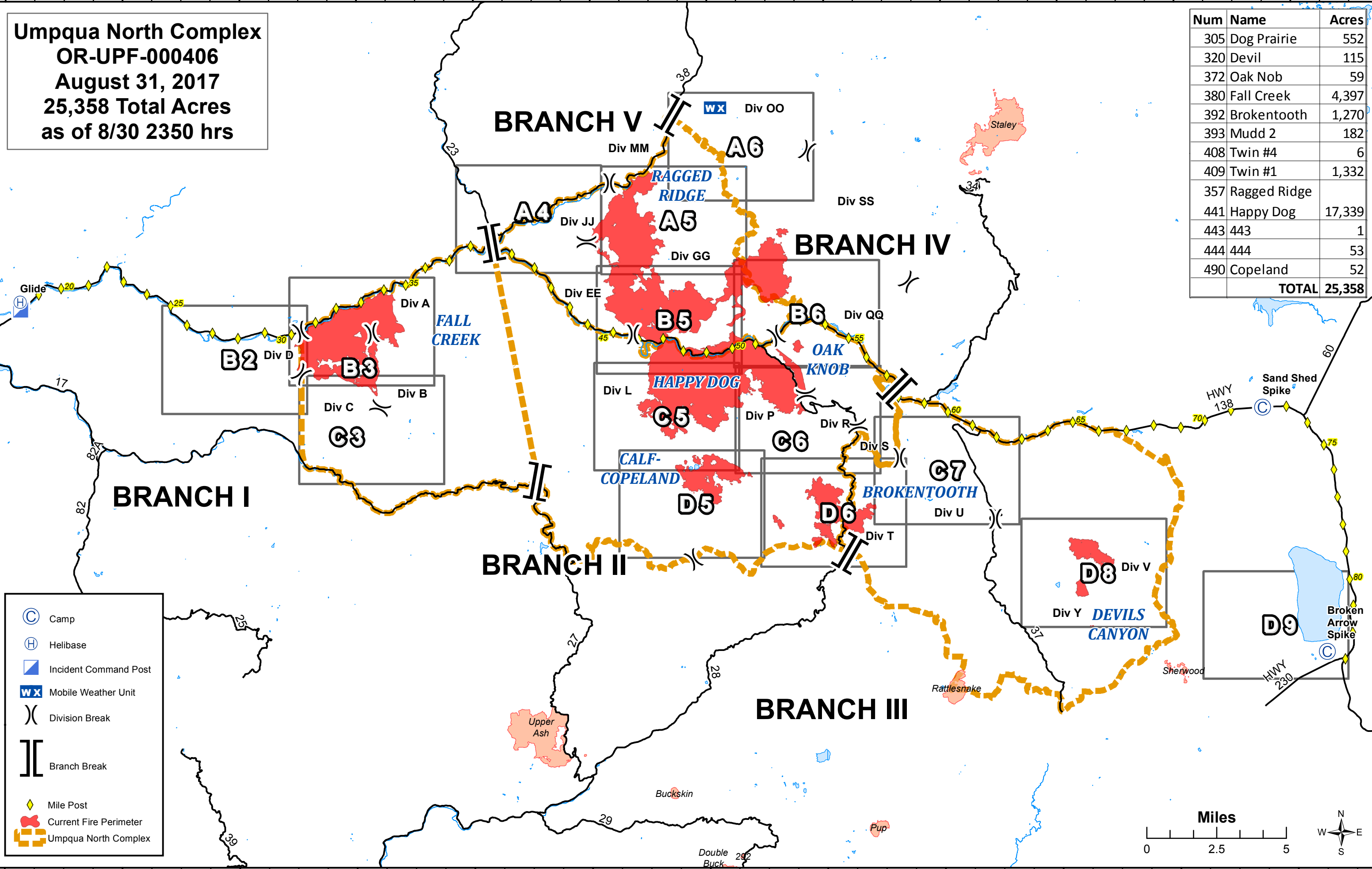


Umpqua North Complex
OR-UPF-000406
August 31, 2017
25,358 Total Acres
as of 8/30 2350 hrs

Num	Name	Acres
305	Dog Prairie	552
320	Devil	115
372	Oak Nob	59
380	Fall Creek	4,397
392	Broketooth	1,270
393	Mudd 2	182
408	Twin #4	6
409	Twin #1	1,332
357	Ragged Ridge	
441	Happy Dog	17,339
443	443	1
444	444	53
490	Copeland	52
TOTAL		25,358



BRANCH I

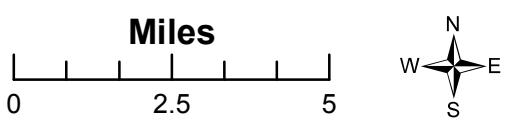
BRANCH II

BRANCH III

BRANCH V

BRANCH IV

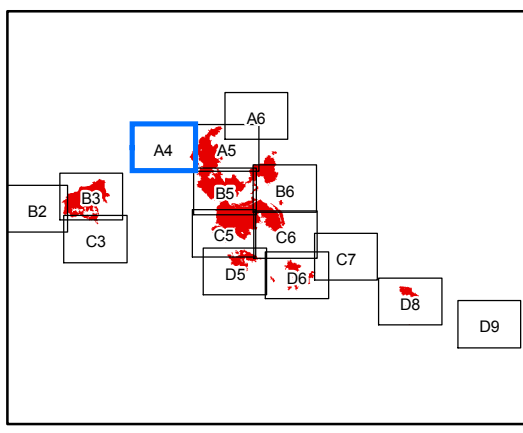
- Camp
- Helibase
- Incident Command Post
- Mobile Weather Unit
- Division Break
- Branch Break
- Mile Post
- Current Fire Perimeter
- Umpqua North Complex



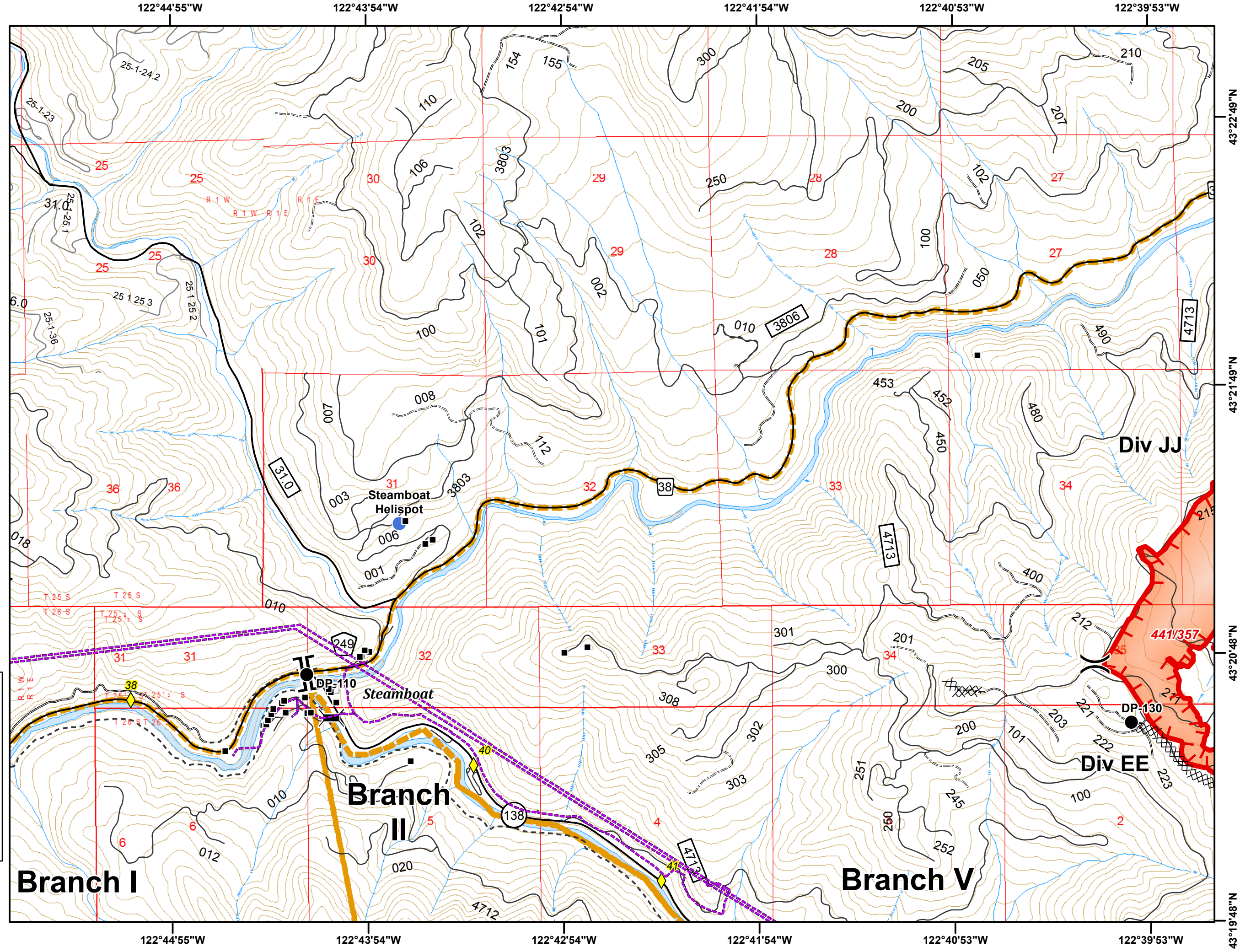
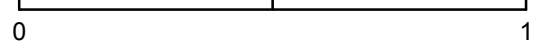
Umpqua North Complex
OR-UPF-000406
August 31, 2017
25,358 Total Acres
as of 8/30 2350 hrs
A4
1:24,000
NAD 83 UTM Zone 10N



- Mile Post
- Structure
- Bridge
- Drop Point
- Helispot
- Division Break
- Branch Break
- Parking Area
- Uncontrolled Fire Edge
- Completed Dozer Line
- Powerline
- Umpqua North Complex



Miles



Umpqua North Complex
OR-UPF-000406
August 31, 2017
25,358 Total Acres
as of 8/30 2350 hrs

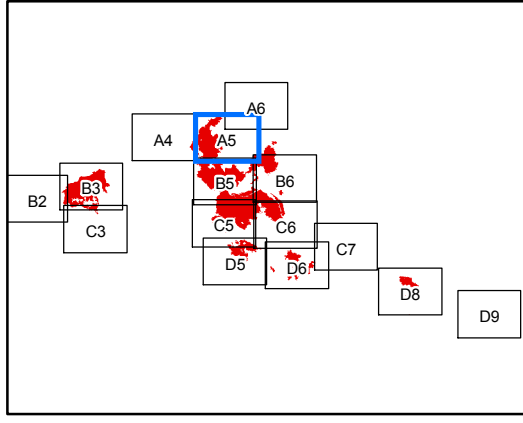
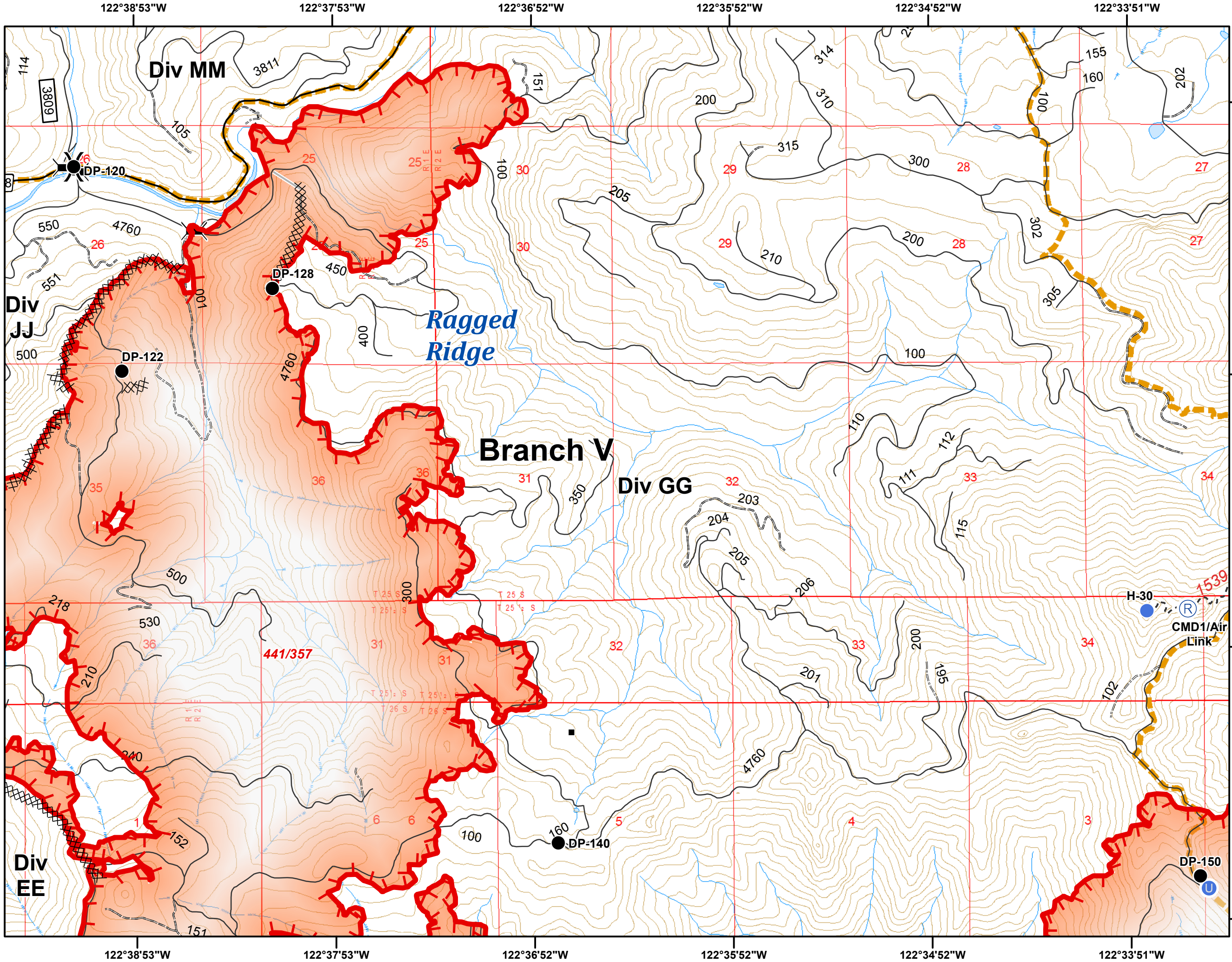
A5

1:24,000

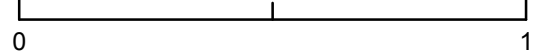
NAD 83 UTM Zone 10N



- Structure
- ⌘ Bridge
- Drop Point
- ⊕ Unimproved Landing Area
- Helispot
- Ⓡ Repeater
- ⌋ Division Break
- ┌ Uncontrolled Fire Edge
- XXXXX Completed Dozer Line
- Completed Hand Line
- ▭ Umpqua North Complex



Miles



122°38'53"W 122°37'53"W 122°36'52"W 122°35'52"W 122°34'52"W 122°33'51"W

43°22'49"N
43°21'49"N
43°20'48"N
43°19'48"N

Umpqua North Complex
OR-UPF-000406
August 31, 2017
25,358 Total Acres
as of 8/30 2350 hrs

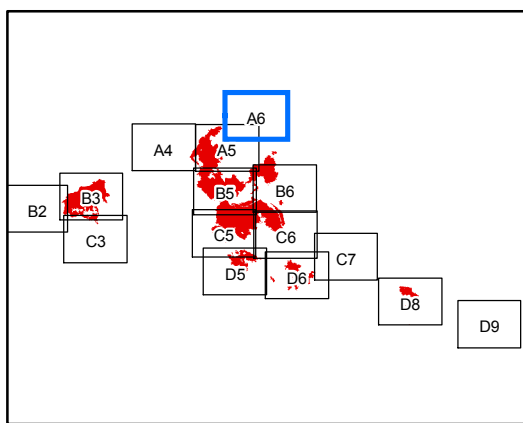
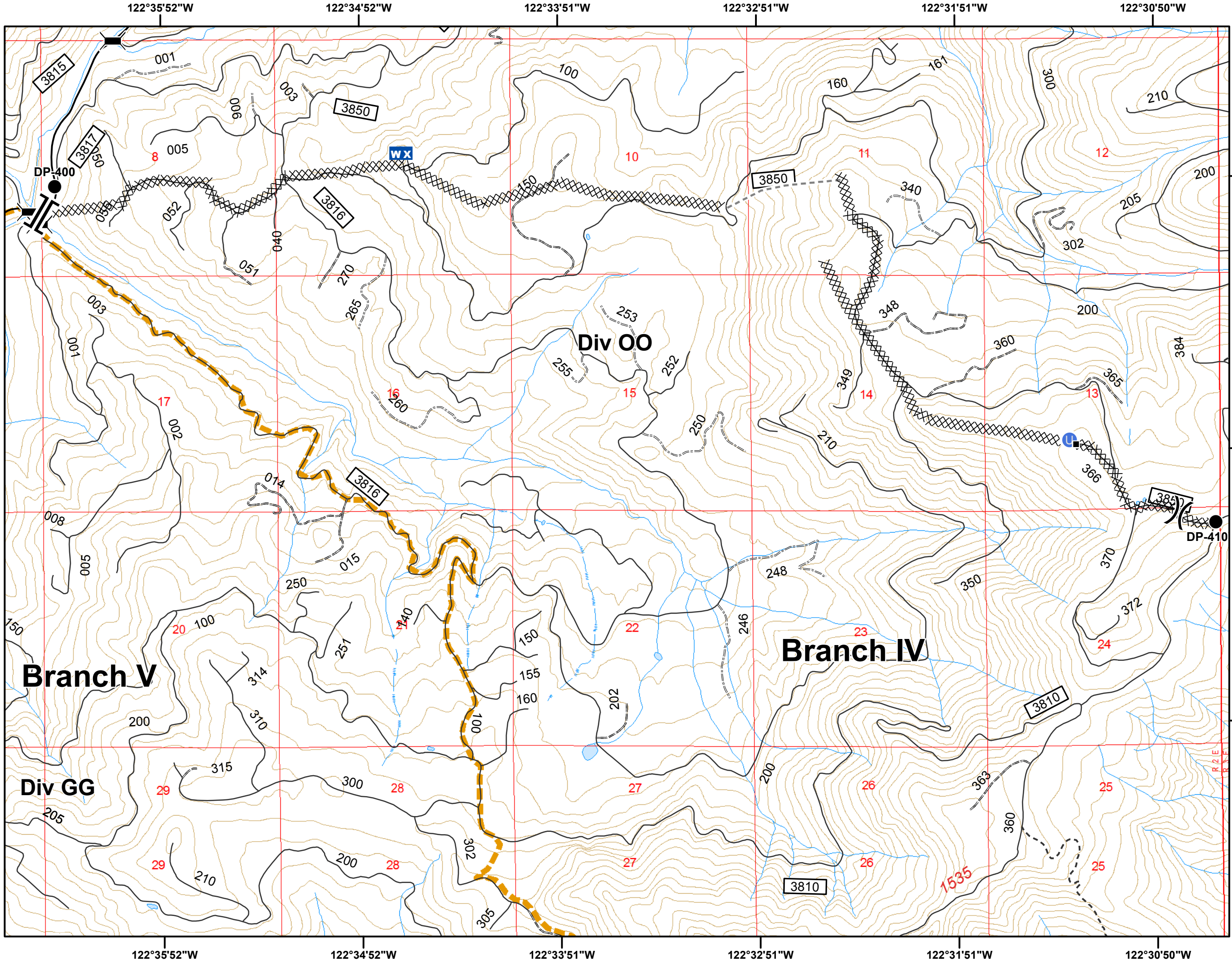
A6

1:24,000

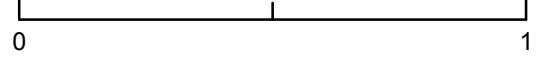
NAD 83 UTM Zone 10N



- Structure
- ⌵ Bridge
- Drop Point
- U Unimproved Landing Area
- WX Mobile Weather Unit
-) Division Break
- || Branch Break
- XXXXX Completed Dozer Line
- - - Proposed Handline
- Umpqua North Complex



Miles



Umpqua North Complex
OR-UPF-000406
August 31, 2017
25,358 Total Acres
as of 8/30 2350 hrs

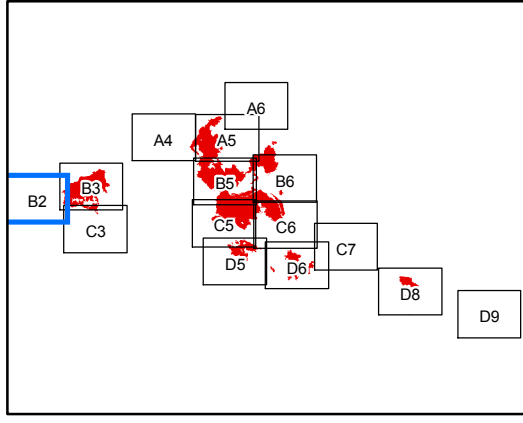
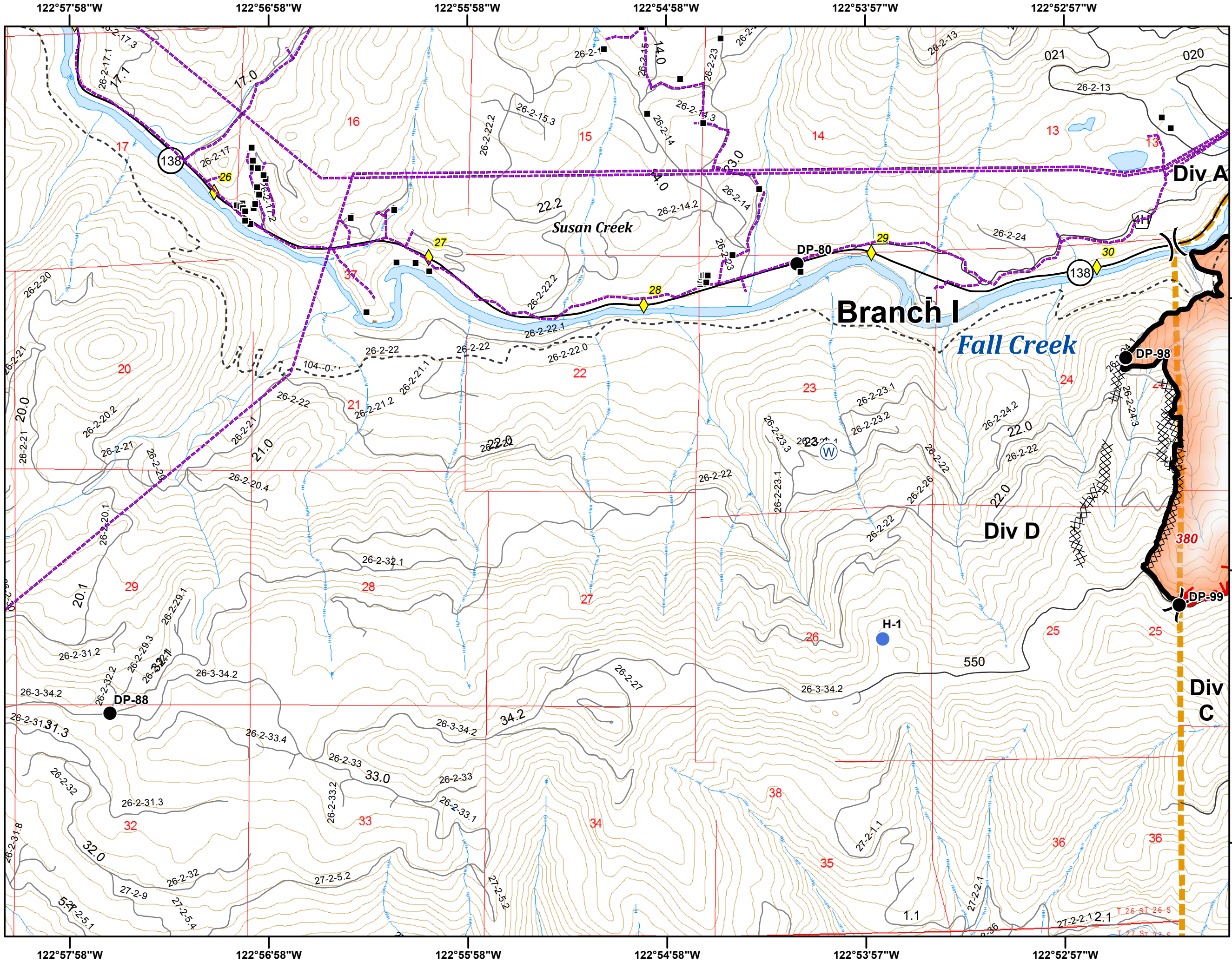
B2

1:24,000

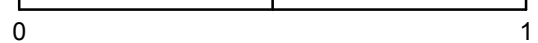
NAD 83 UTM Zone 10N



-  Mile Post
-  Structure
-  Drop Point
-  Helispot
-  Water Source
-  Division Break
-  Uncontrolled Fire Edge
-  Completed Line
-  Completed Dozer Line
-  Completed Hand Line
-  Powerline
-  Umpqua North Complex



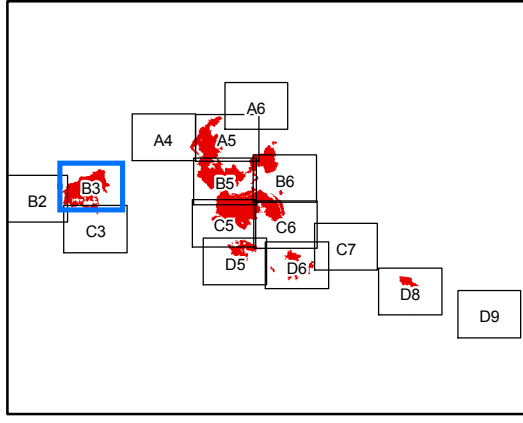
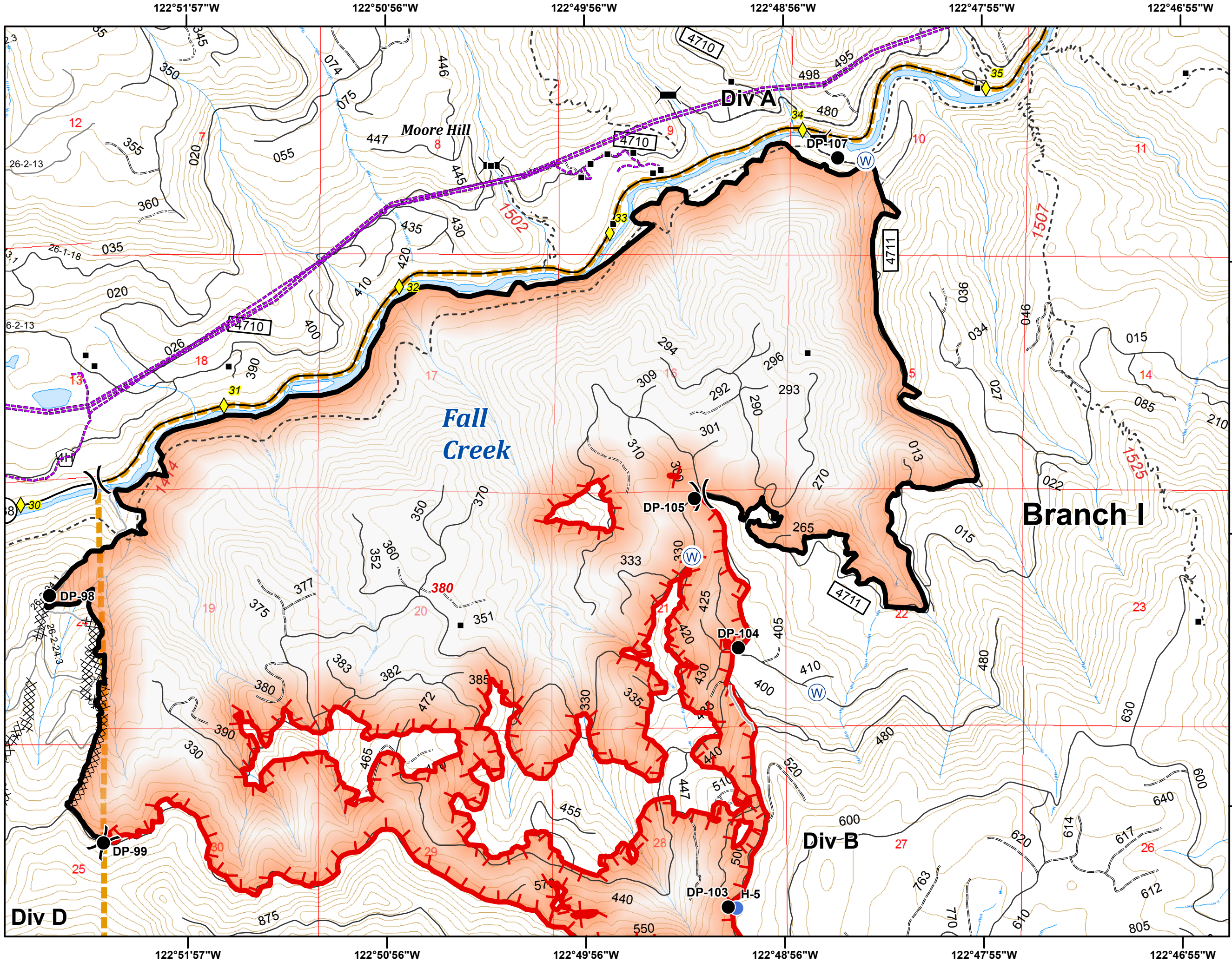
Miles



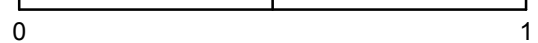
Umpqua North Complex
OR-UPF-000406
August 31, 2017
25,358 Total Acres
as of 8/30 2350 hrs
B3
1:24,000
NAD 83 UTM Zone 10N



- Mile Post
- Structure
- Bridge
- Drop Point
- Helispot
- Spot Fire
- Water Source
- Division Break
- Uncontrolled Fire Edge
- Completed Line
- Completed Dozer Line
- Completed Hand Line
- Powerline
- Umpqua North Complex



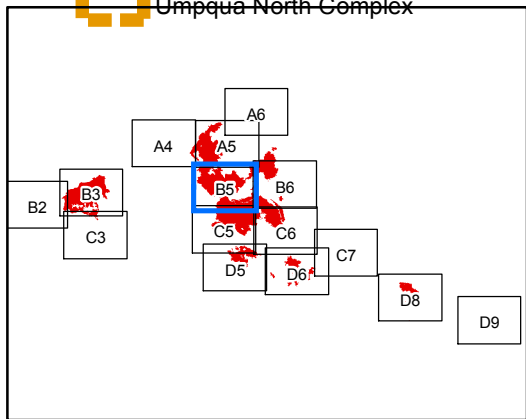
Miles



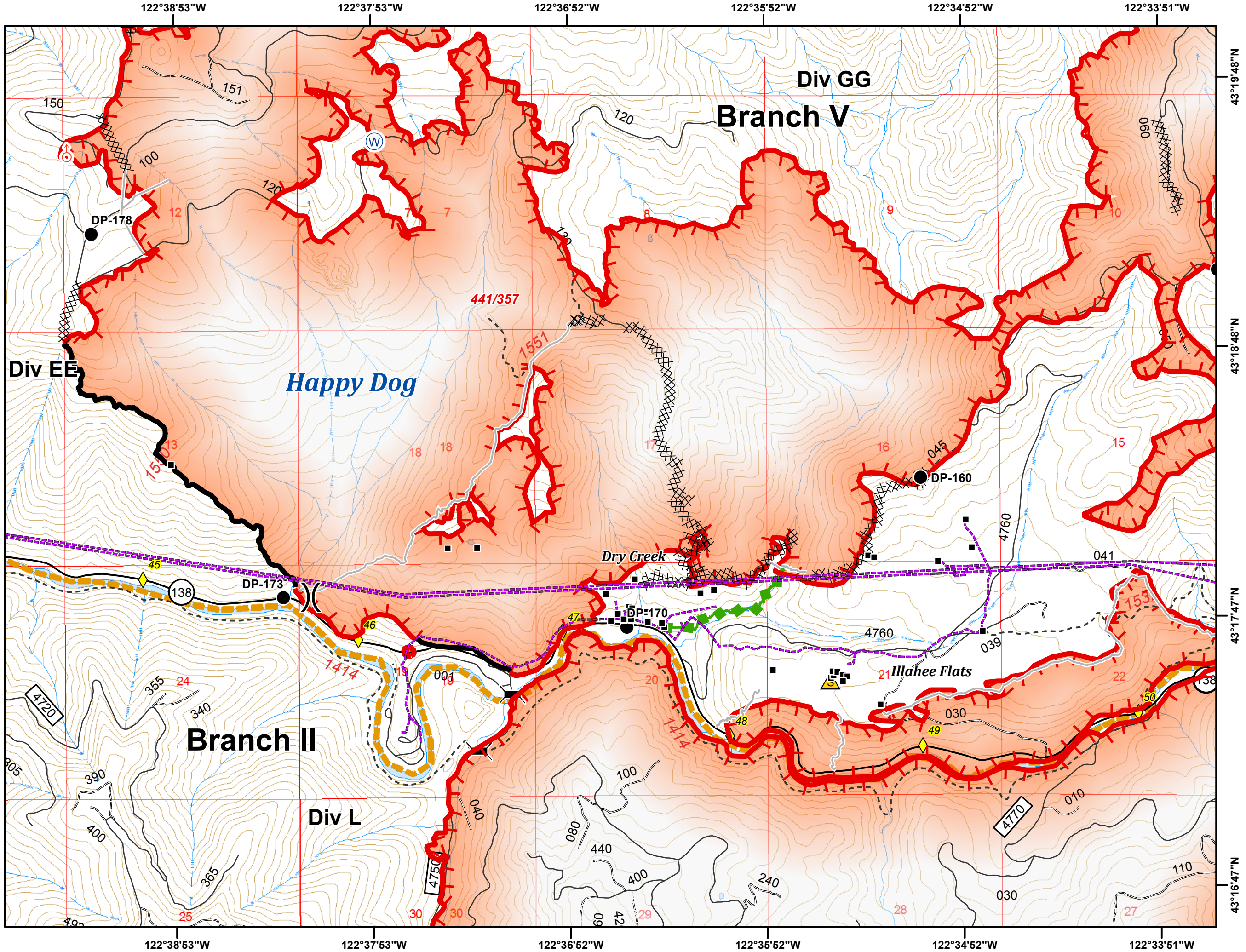
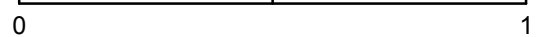
Umpqua North Complex
OR-UPF-000406
August 31, 2017
25,358 Total Acres
as of 8/30 2350 hrs
B5
1:24,000
NAD 83 UTM Zone 10N



- Mile Post
- Structure
- Bridge
- Drop Point
- Safety Zone
- Spot Fire
- Water Source
- Division Break
- Uncontrolled Fire Edge
- Completed Line
- Completed Dozer Line
- Completed Hand Line
- Escape Route
- Powerline
- Umpqua North Complex



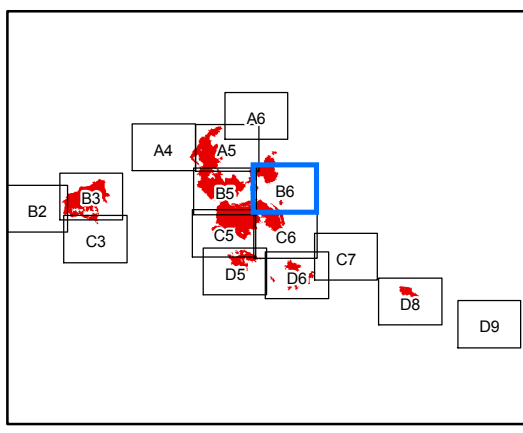
Miles



Umpqua North Complex
OR-UPF-000406
August 31, 2017
25,358 Total Acres
as of 8/30 2350 hrs
B6
1:24,000
NAD 83 UTM Zone 10N

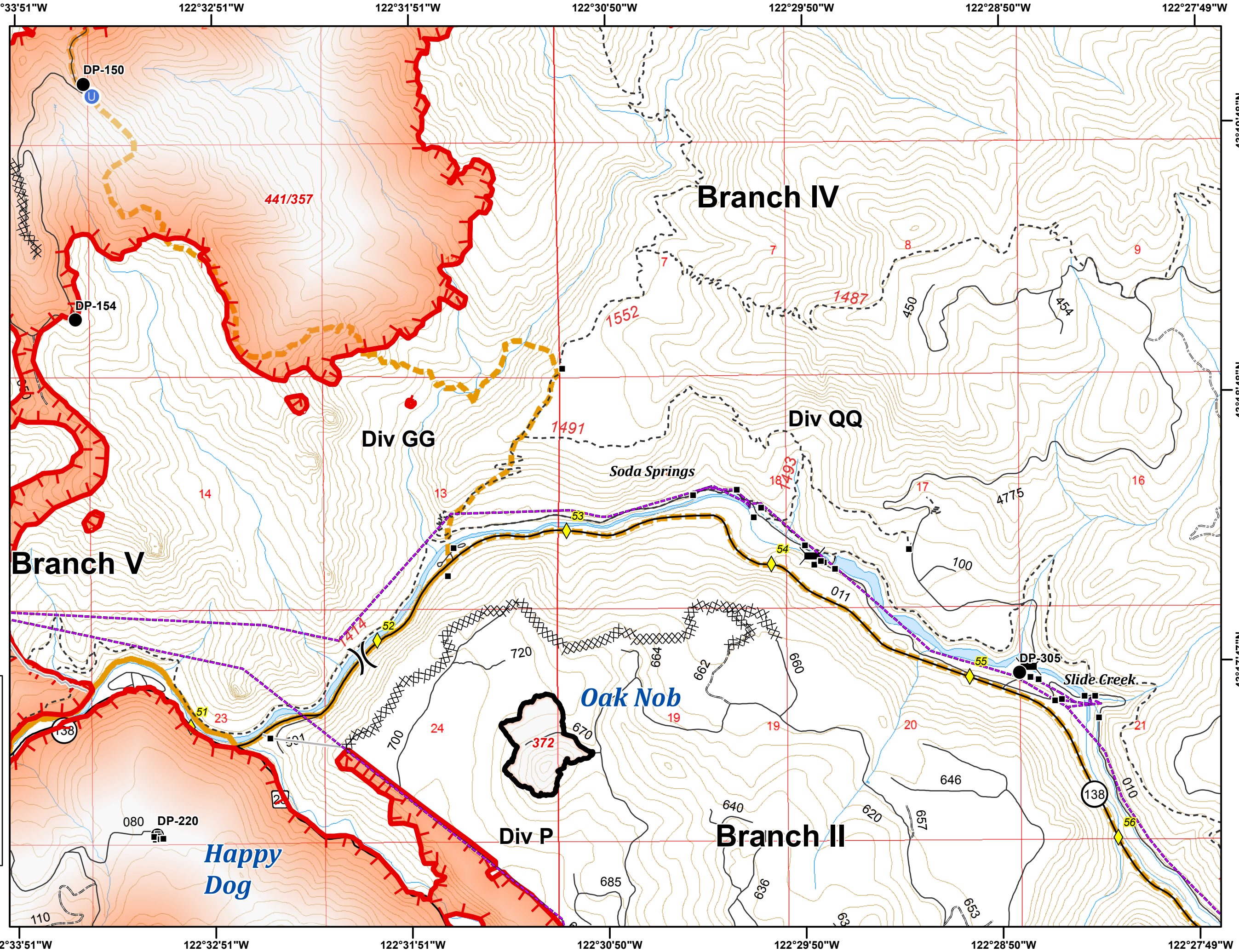


- Mile Post
- Structure
- Bridge
- Drop Point
- Unimproved Landing Area
- Uncontrolled Fire Edge
- Completed Line
- Completed Dozer Line
- Completed Hand Line
- Powerline
- Umpqua North Complex



Miles

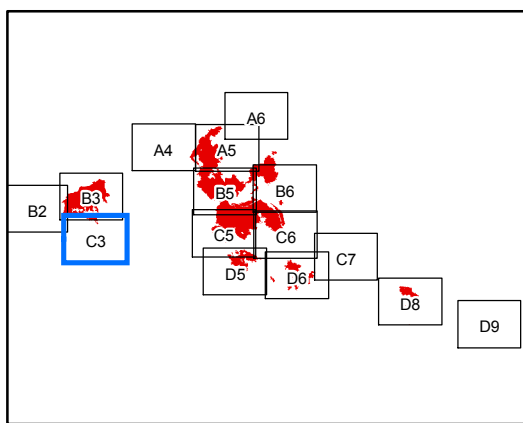
0 1



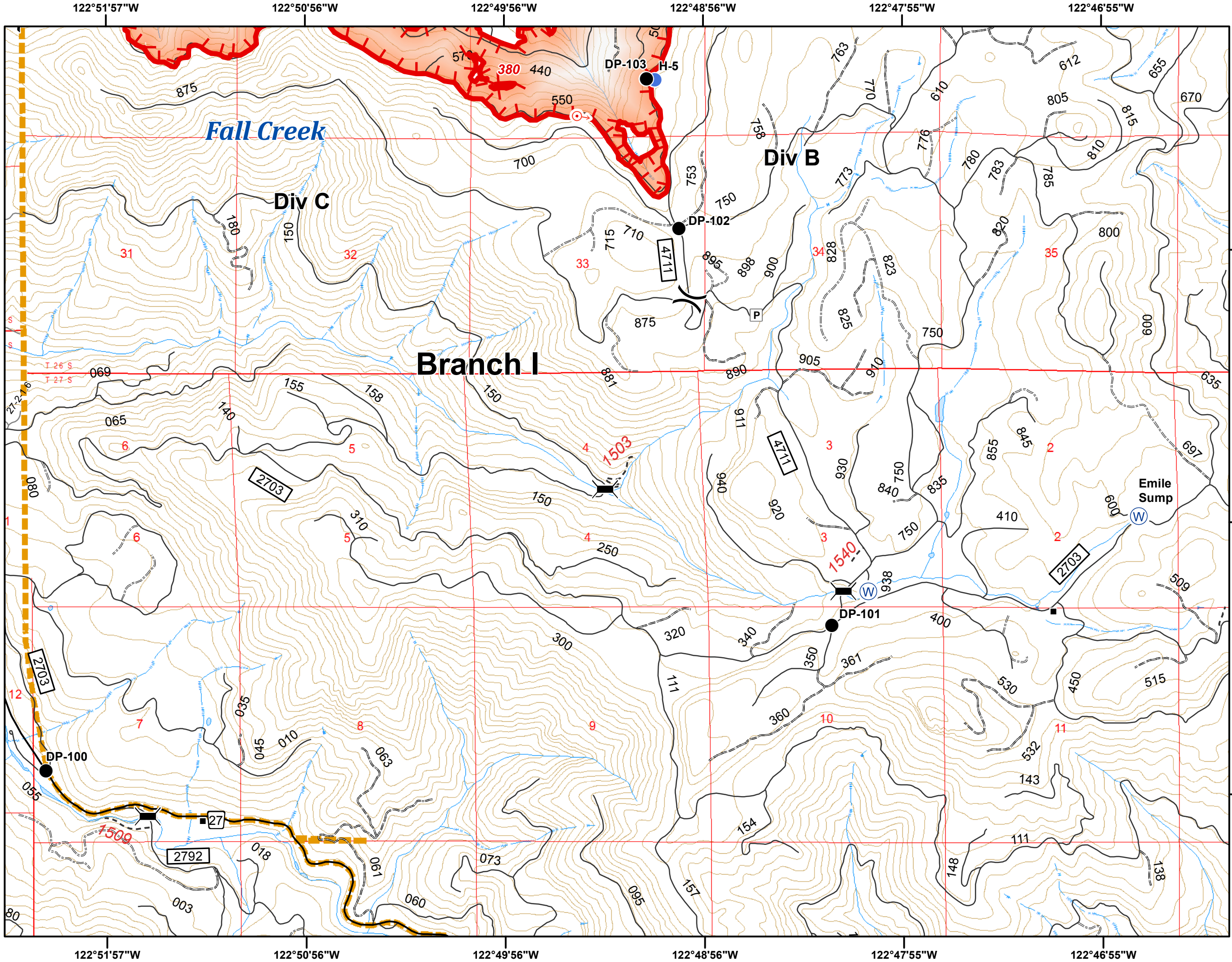
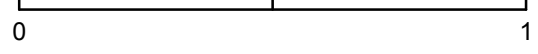
**Umpqua North
Complex**
OR-UPF-000406
August 31, 2017
25,358 Total Acres
as of 8/30 2350 hrs
C3
1:24,000
NAD 83 UTM Zone 10N



- Structure
- ⌒ Bridge
- Drop Point
- Helispot
- Spot Fire
- Ⓜ Water Source
- ⌒ Division Break
- Ⓟ Parking Area
- ▬ Uncontrolled Fire Edge
- ▭ Umpqua North Complex







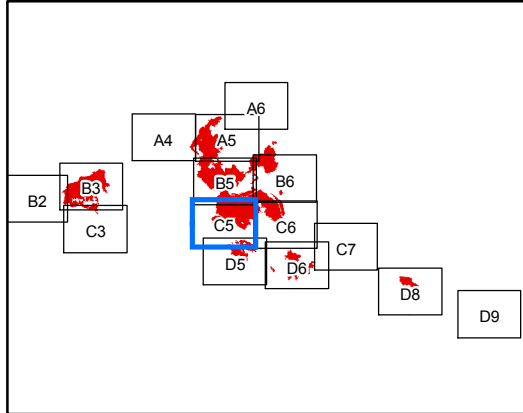
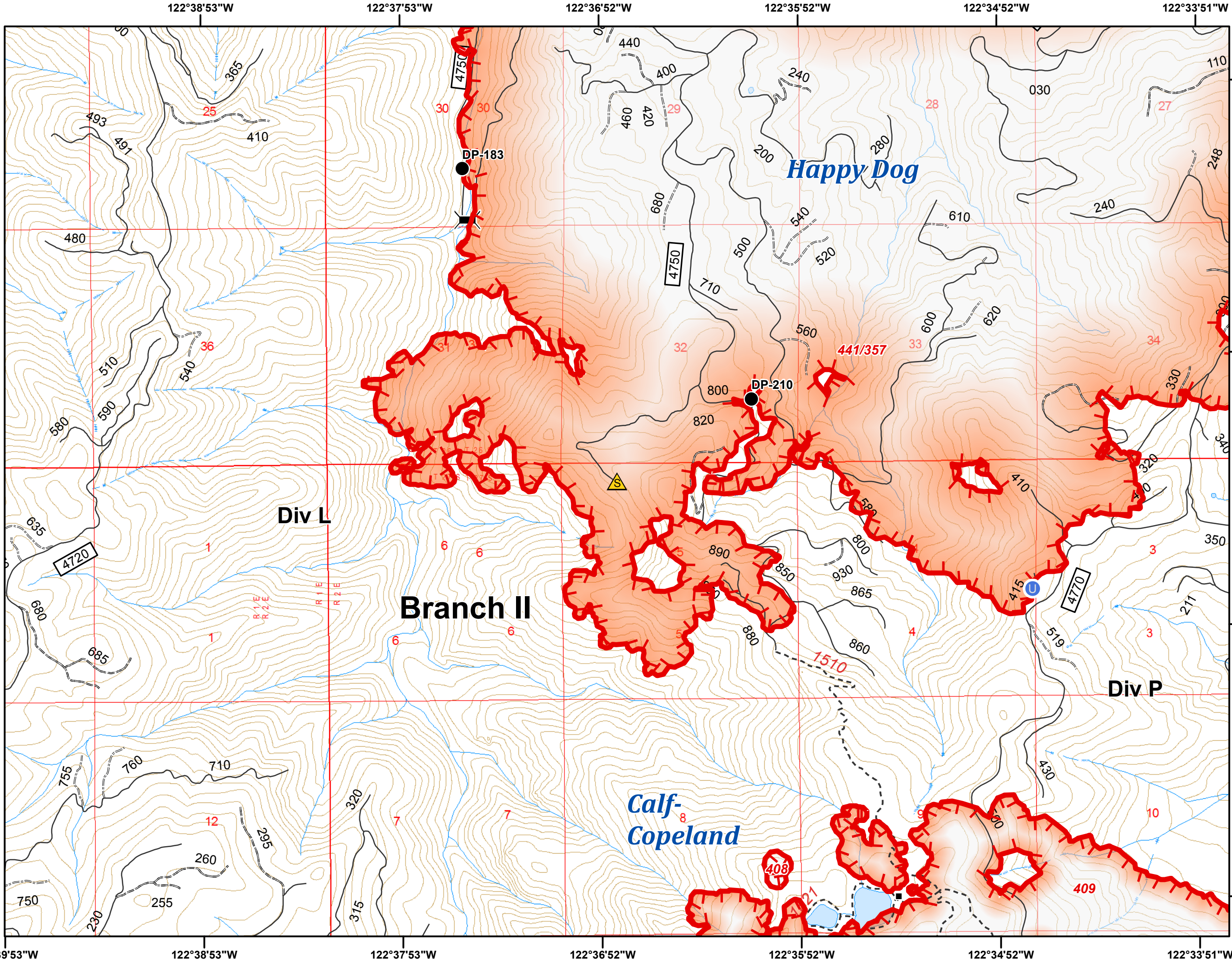
Miles



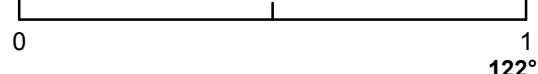
Umpqua North Complex
OR-UPF-000406
August 31, 2017
25,358 Total Acres
as of 8/30 2350 hrs
C5
1:24,000
NAD 83 UTM Zone 10N



-  Structure
-  Bridge
-  Drop Point
-  Unimproved Landing Area
-  Safety Zone
-  Uncontrolled Fire Edge
-  Umpqua North Complex











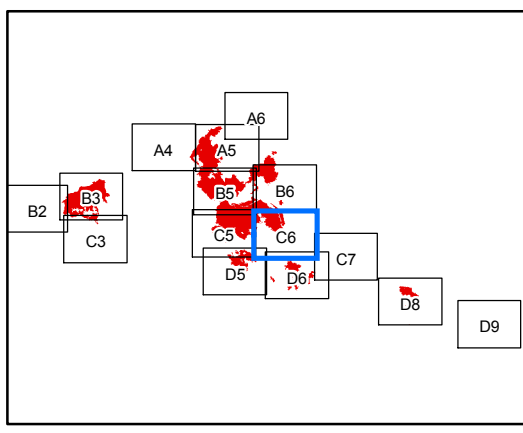
Miles



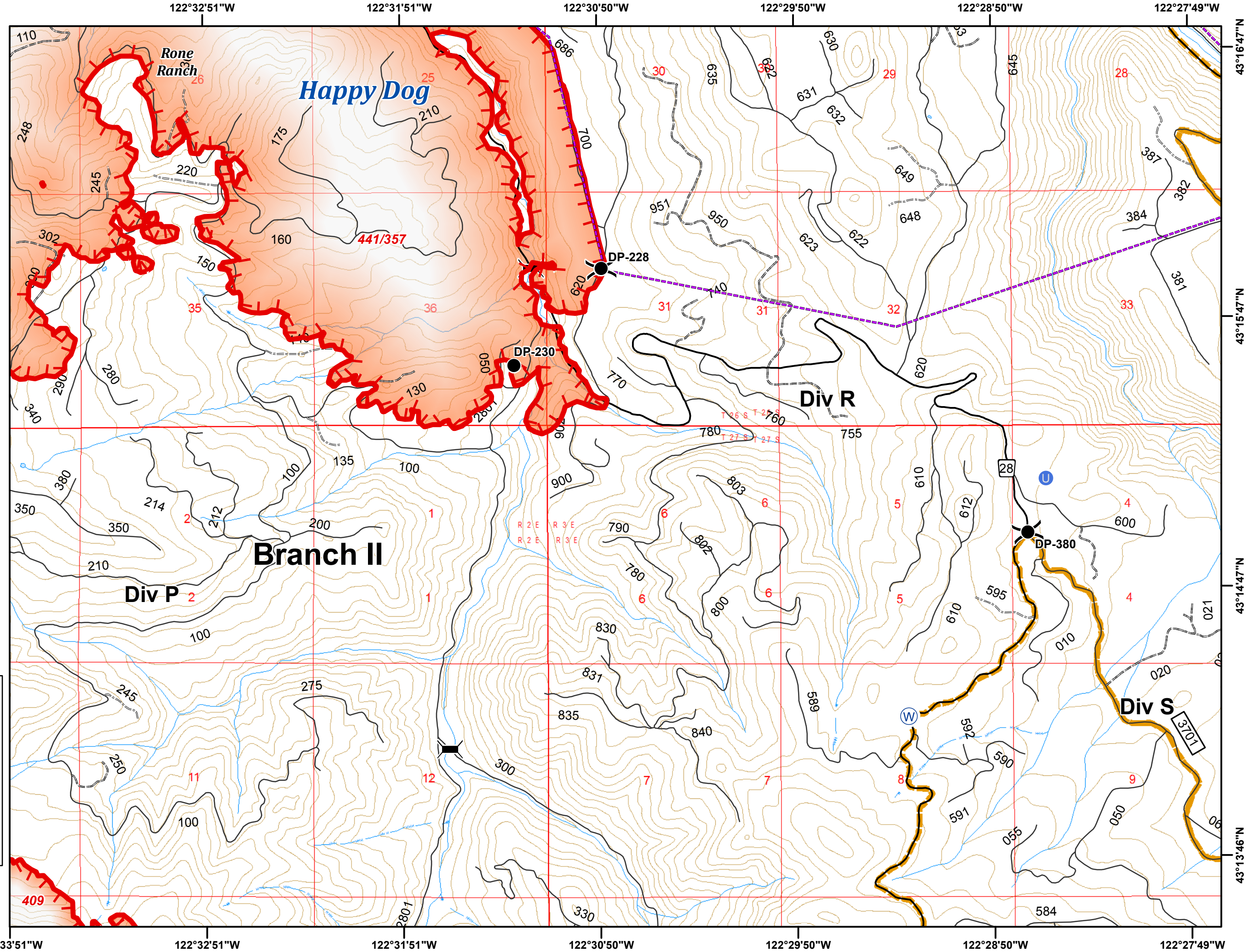
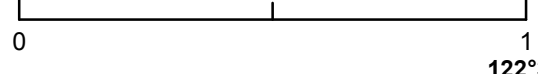
Umpqua North Complex
OR-UPF-000406
August 31, 2017
25,358 Total Acres
as of 8/30 2350 hrs
C6
1:24,000
NAD 83 UTM Zone 10N



-  Bridge
-  Drop Point
-  Unimproved Landing Area
-  Water Source
-  Division Break
-  Uncontrolled Fire Edge
-  Powerline
-  Umpqua North Complex














Miles

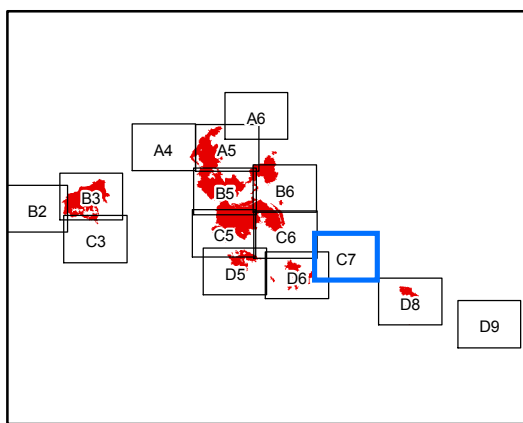
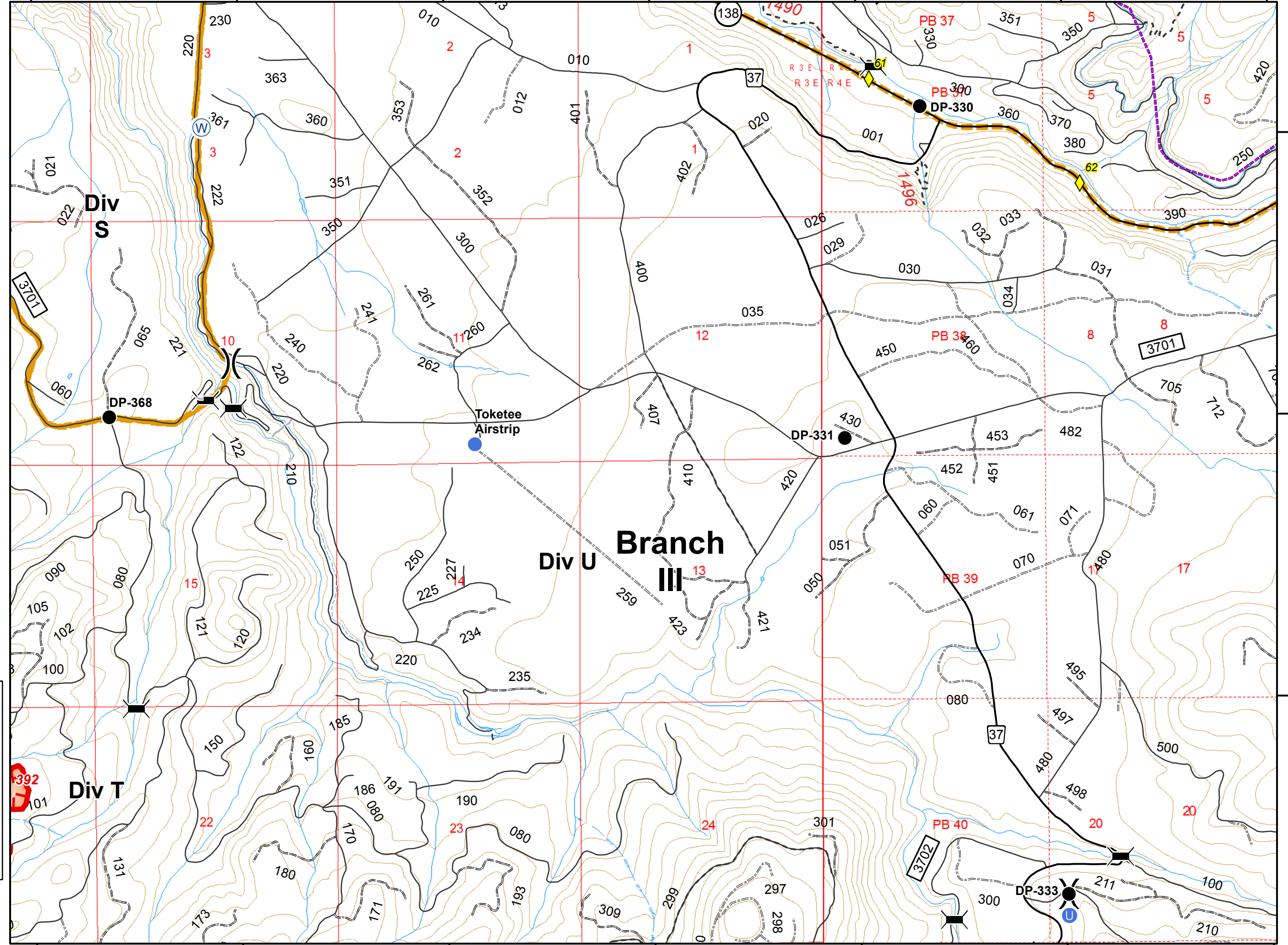


122°27'49"W 122°26'49"W 122°25'49"W 122°24'49"W 122°23'48"W 122°22'48"W 122°21'48"W

Umpqua North Complex
OR-UPF-000406
August 31, 2017
25,358 Total Acres
as of 8/30 2350 hrs
C7
1:24,000
NAD 83 UTM Zone 10N



-  Mile Post
-  Bridge
-  Drop Point
-  Unimproved Landing Area
-  Helispot
-  Water Source
-  Division Break
-  Uncontrolled Fire Edge
-  Completed Hand Line
-  Powerline
-  Umpqua North Complex



Miles

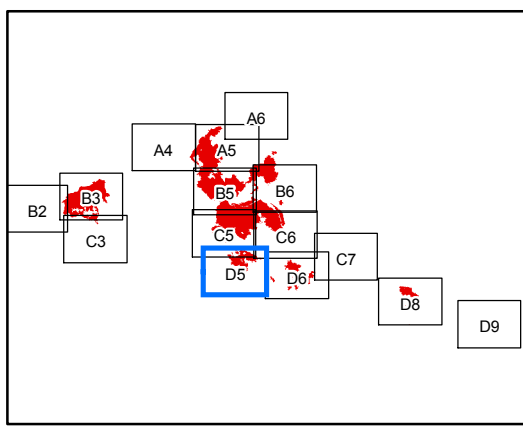
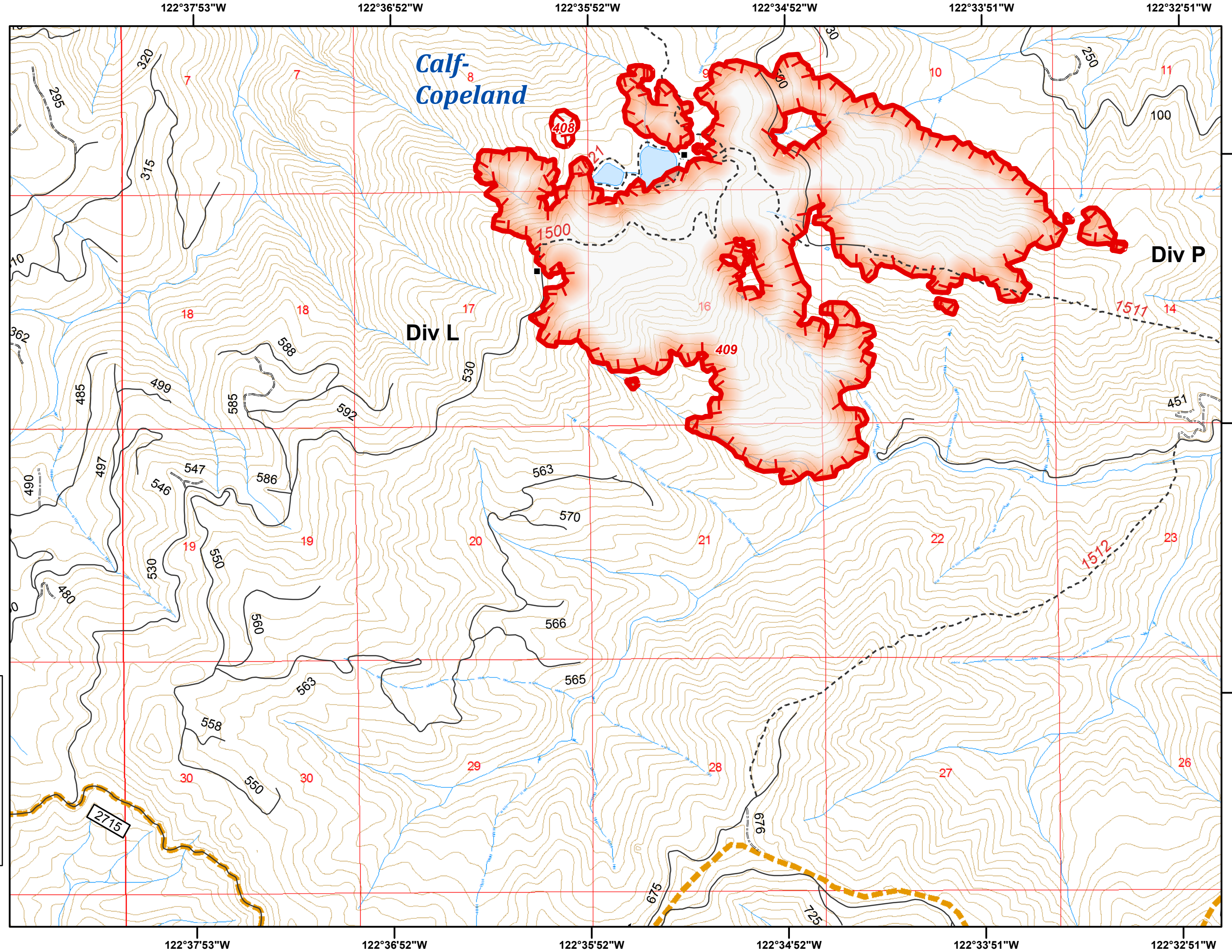
0 1 122°27'49"W 122°26'49"W 122°25'49"W 122°24'49"W 122°23'48"W 122°22'48"W 122°21'48"W

43°14'47"N
43°13'46"N
43°12'46"N

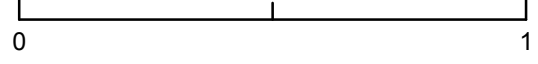
Umpqua North Complex
OR-UPF-000406
August 31, 2017
25,358 Total Acres
as of 8/30 2350 hrs
D5
1:24,000
NAD 83 UTM Zone 10N



- Structure
-) Division Break
- Uncontrolled Fire Edge
- Umpqua North Complex



Miles



122°37'53"W 122°36'52"W 122°35'52"W 122°34'52"W 122°33'51"W 122°32'51"W

43°11'46"N

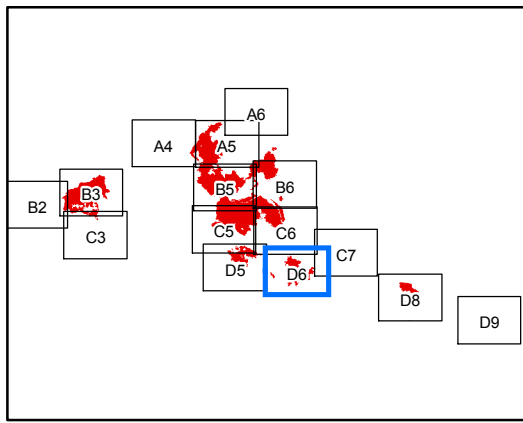
43°12'46"N

43°13'46"N

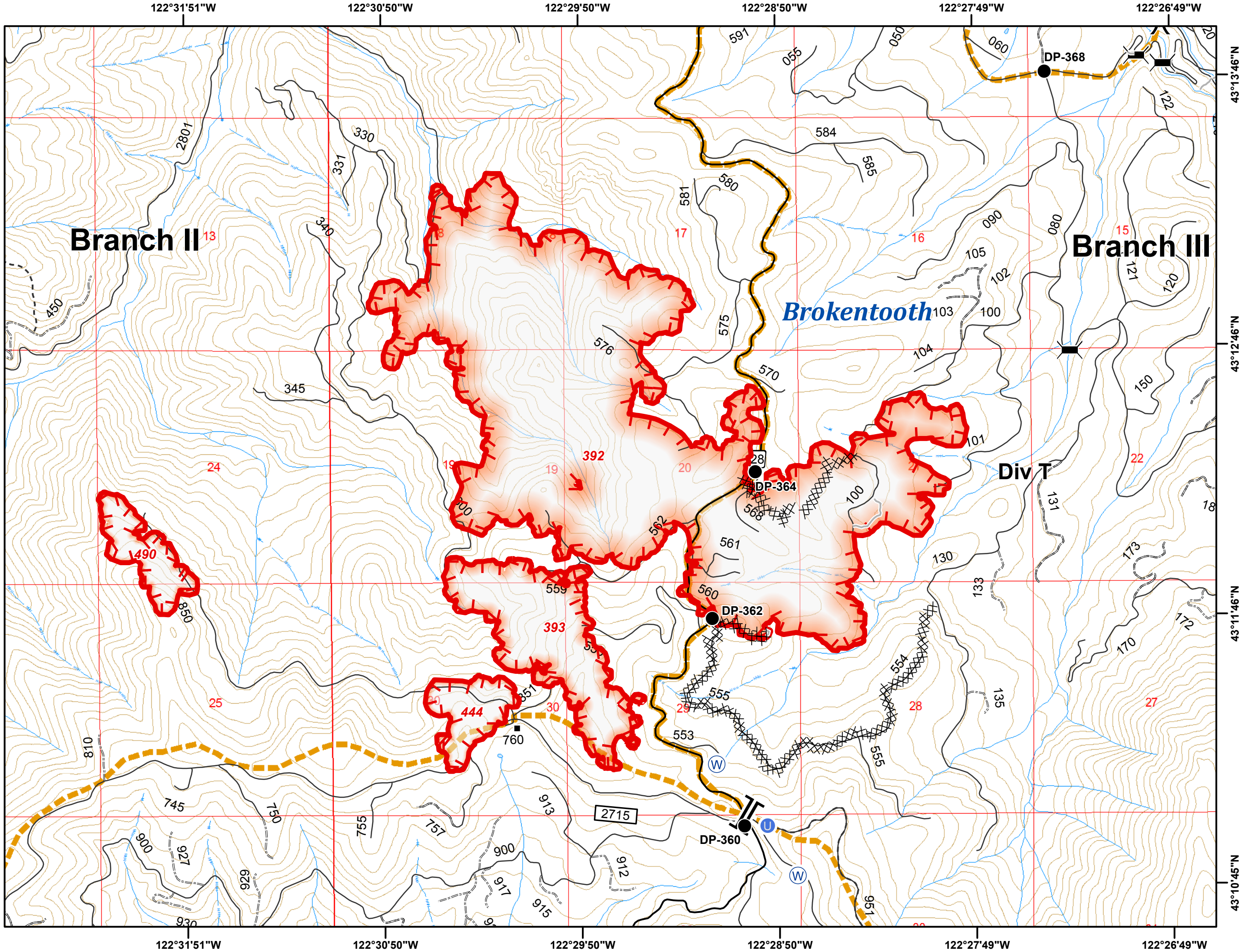
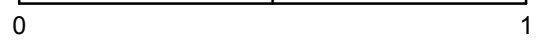
Umpqua North Complex
OR-UPF-000406
August 31, 2017
25,358 Total Acres
as of 8/30 2350 hrs
D6
1:24,000
NAD 83 UTM Zone 10N



- Structure
- ⌵ Bridge
- Drop Point
- ⊕ Unimproved Landing Area
- Ⓜ Water Source
- ⌋ Division Break
- ⌌ Branch Break
- ┌ Uncontrolled Fire Edge
- XXXXX Completed Dozer Line
- Completed Hand Line
- ▭ Umpqua North Complex



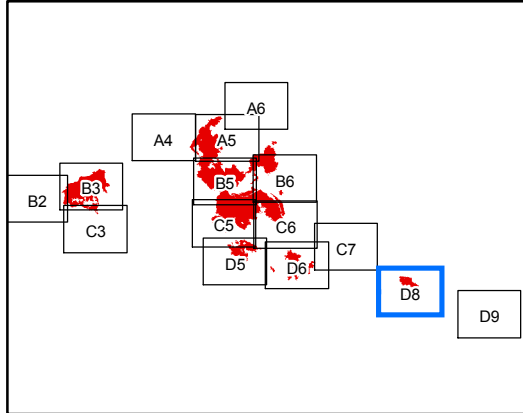
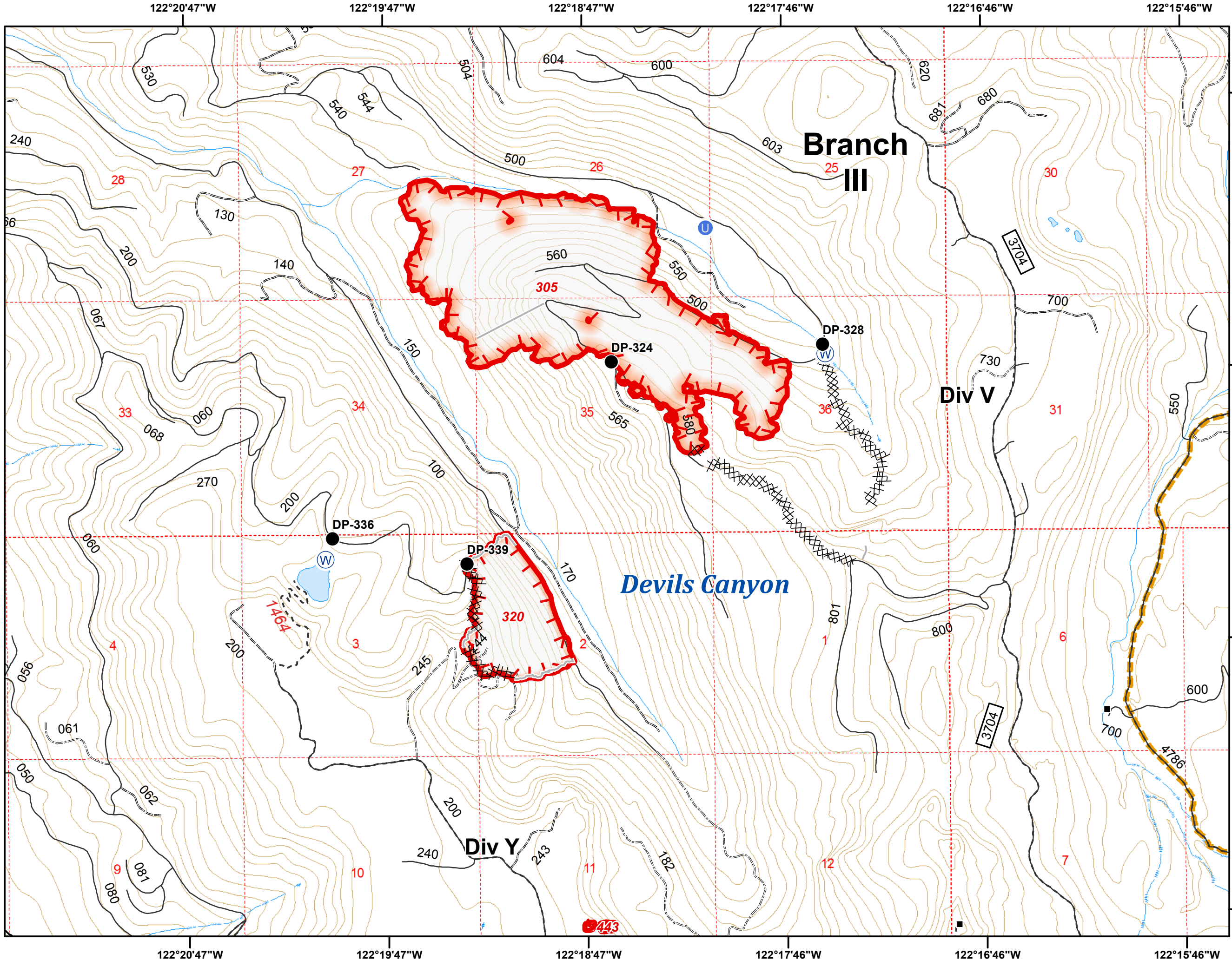
Miles



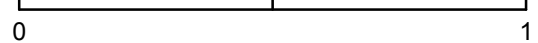
Umpqua North Complex
OR-UPF-000406
August 31, 2017
25,358 Total Acres
as of 8/30 2350 hrs
D8
1:24,000
NAD 83 UTM Zone 10N



- Structure
- Drop Point
- U Unimproved Landing Area
- W Water Source
- ┌ Uncontrolled Fire Edge
- XXXXX Completed Dozer Line
- Completed Hand Line
- ▭ Umpqua North Complex



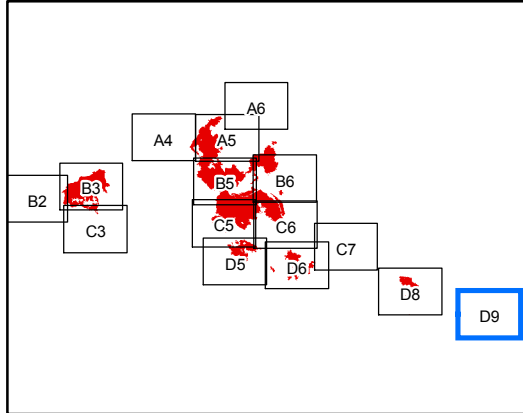
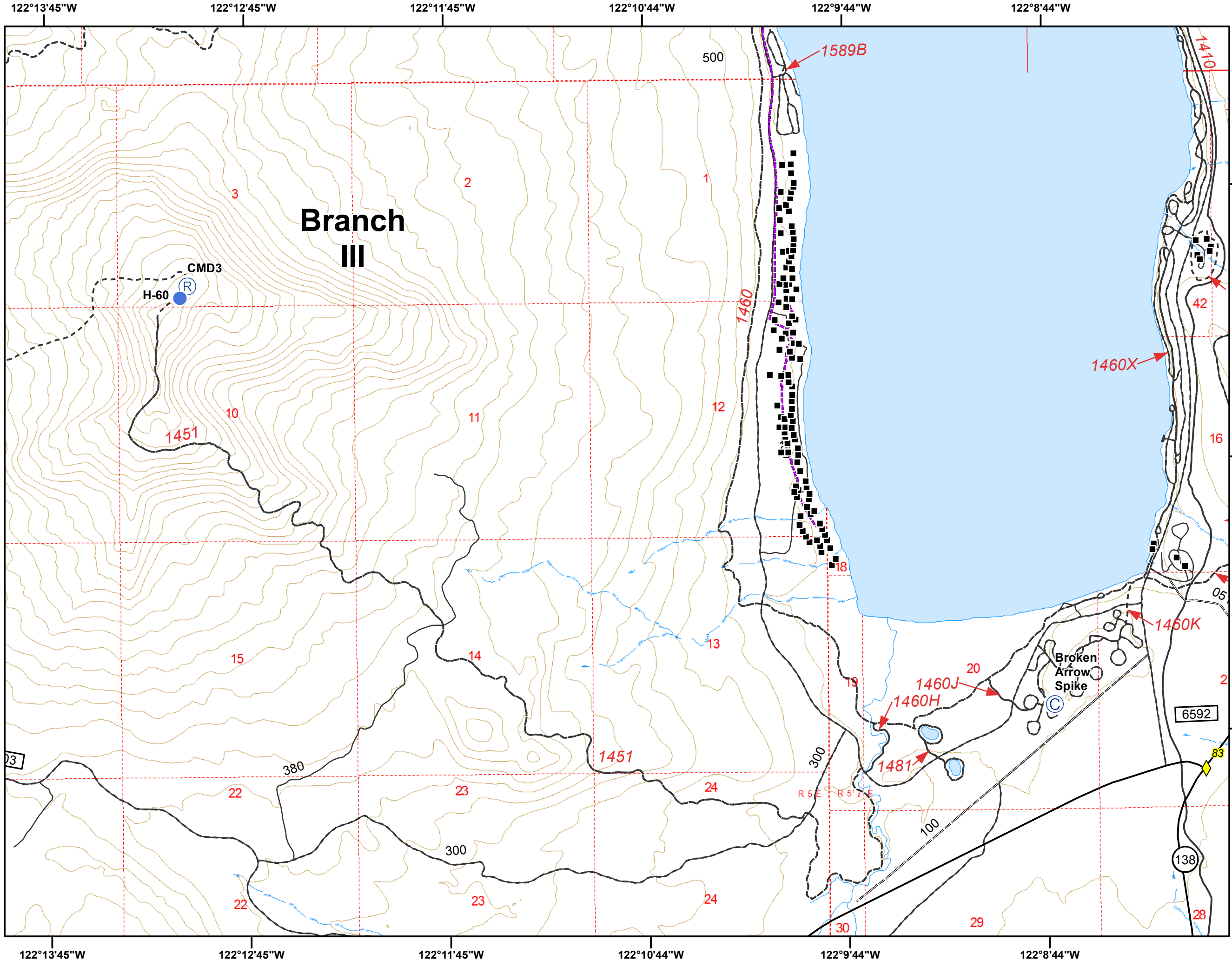
Miles



Umpqua North Complex
OR-UPF-000406
August 31, 2017
25,358 Total Acres
as of 8/30 2350 hrs
D9
1:24,000
NAD 83 UTM Zone 10N



-  Mile Post
-  Structure
-  Camp
-  Helispot
-  Repeater



Miles

