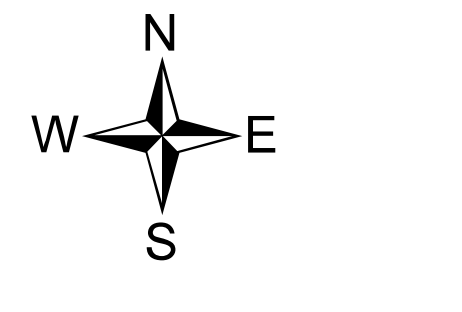
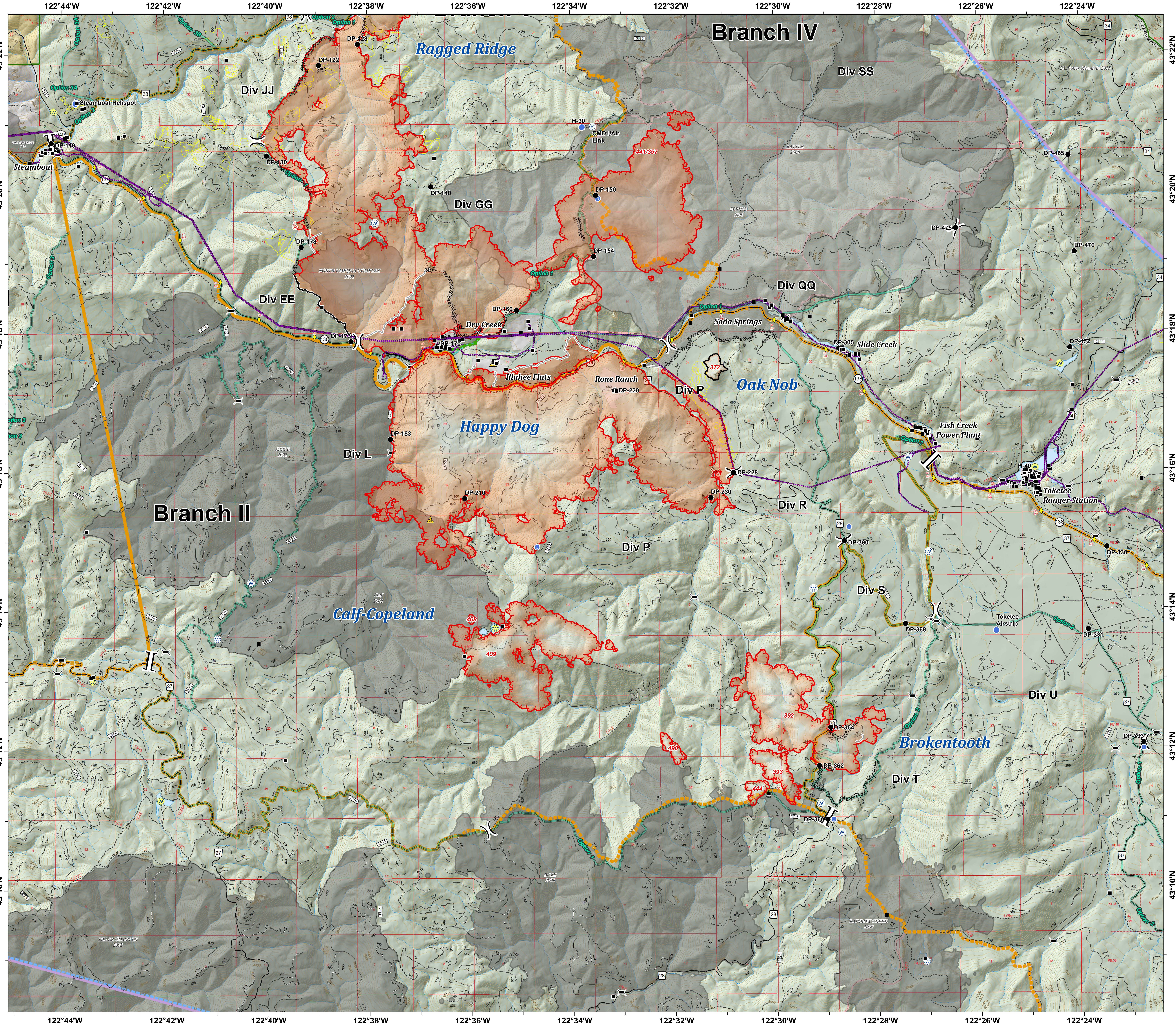


**Umpqua North Complex
OR-UPF-000406
August 31, 2017
25,358 Total Acres
as of 8/30 2350 hrs
BRANCH II**

- Drop Point
- Unimproved Landing Area
- Helispot
- Ⓡ Repeater
- ▲ Safety Zone
- ⊕ Spot Fire
- Ⓜ Water Source
-) Division Break
- [[Branch Break
- ▣ Parking Area
- Structures
- Ⓜ Restricted
- Ⓜ OK
- ▭ TFR
- ◆ Mile Post
- ⚡ Bridge
- Uncontrolled Fire Edge
- Completed Line
- Completed Dozer Line
- Completed Hand Line
- Escape Route
- Strategic Confinement Options
- Powerline
- Contours 100' Intervals
- Current Fire Perimeter
- ▭ Umpqua North Complex
- ▭ Active Timber Sales
- ▭ Bureau of Land Management
- ▭ Private
- ▭ United States Forest Service
- ▭ National Forest Boundary



Miles

