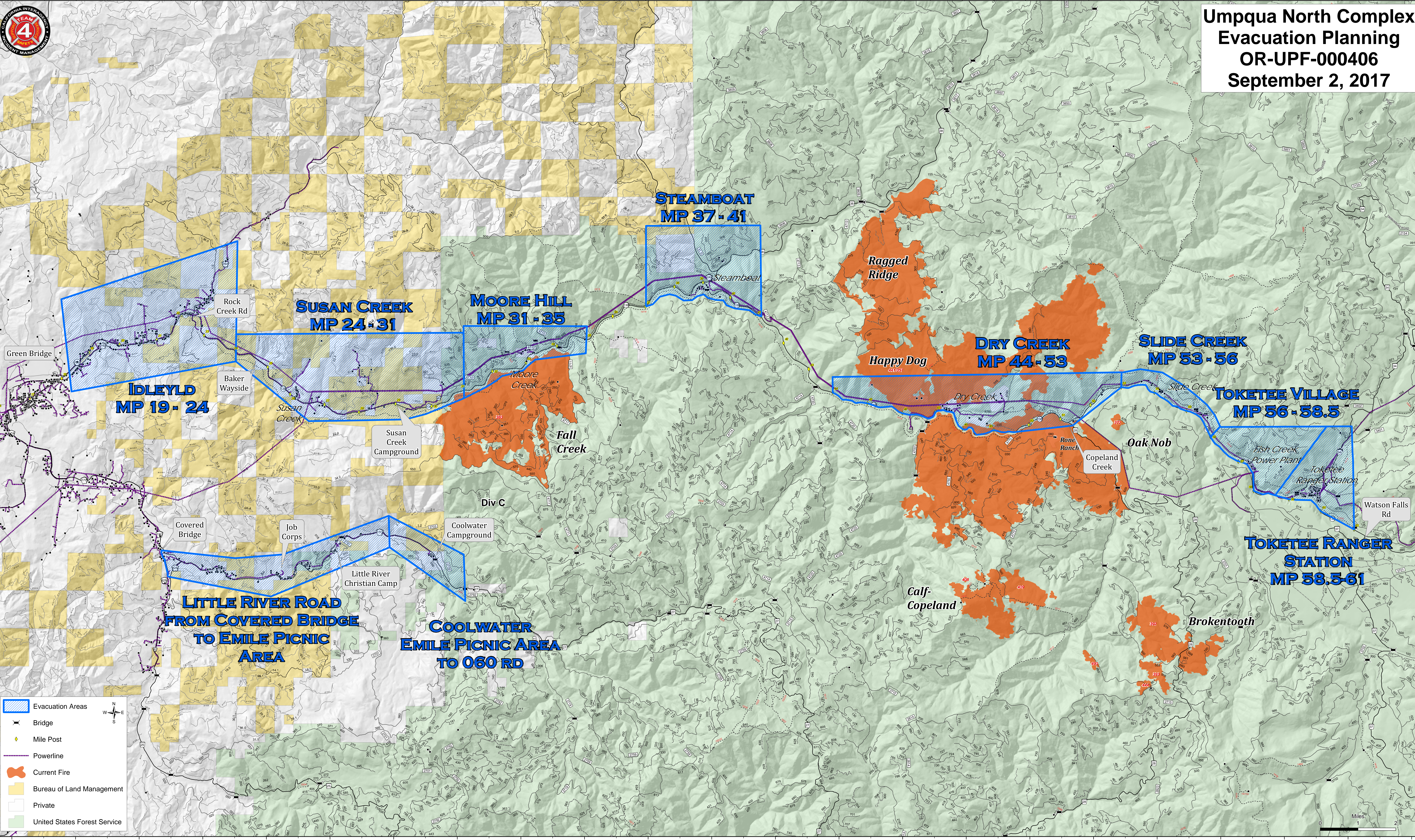


123°6'W 123°4'W 123°2'W 123°0'W 122°58'W 122°56'W 122°54'W 122°52'W 122°50'W 122°48'W 122°46'W 122°44'W 122°42'W 122°40'W 122°38'W 122°36'W 122°34'W 122°32'W 122°30'W 122°28'W 122°26'W 122°24'W 122°22'W



# Umpqua North Complex Evacuation Planning OR-UPF-000406 September 2, 2017



- Evacuation Areas
- Bridge
- Mile Post
- Powerline
- Current Fire
- Bureau of Land Management
- Private
- United States Forest Service

Miles

123°6'W 123°4'W 123°2'W 123°0'W 122°58'W 122°56'W 122°54'W 122°52'W 122°50'W 122°48'W 122°46'W 122°44'W 122°42'W 122°40'W 122°38'W 122°36'W 122°34'W 122°32'W 122°30'W 122°28'W 122°26'W 122°24'W 122°22'W