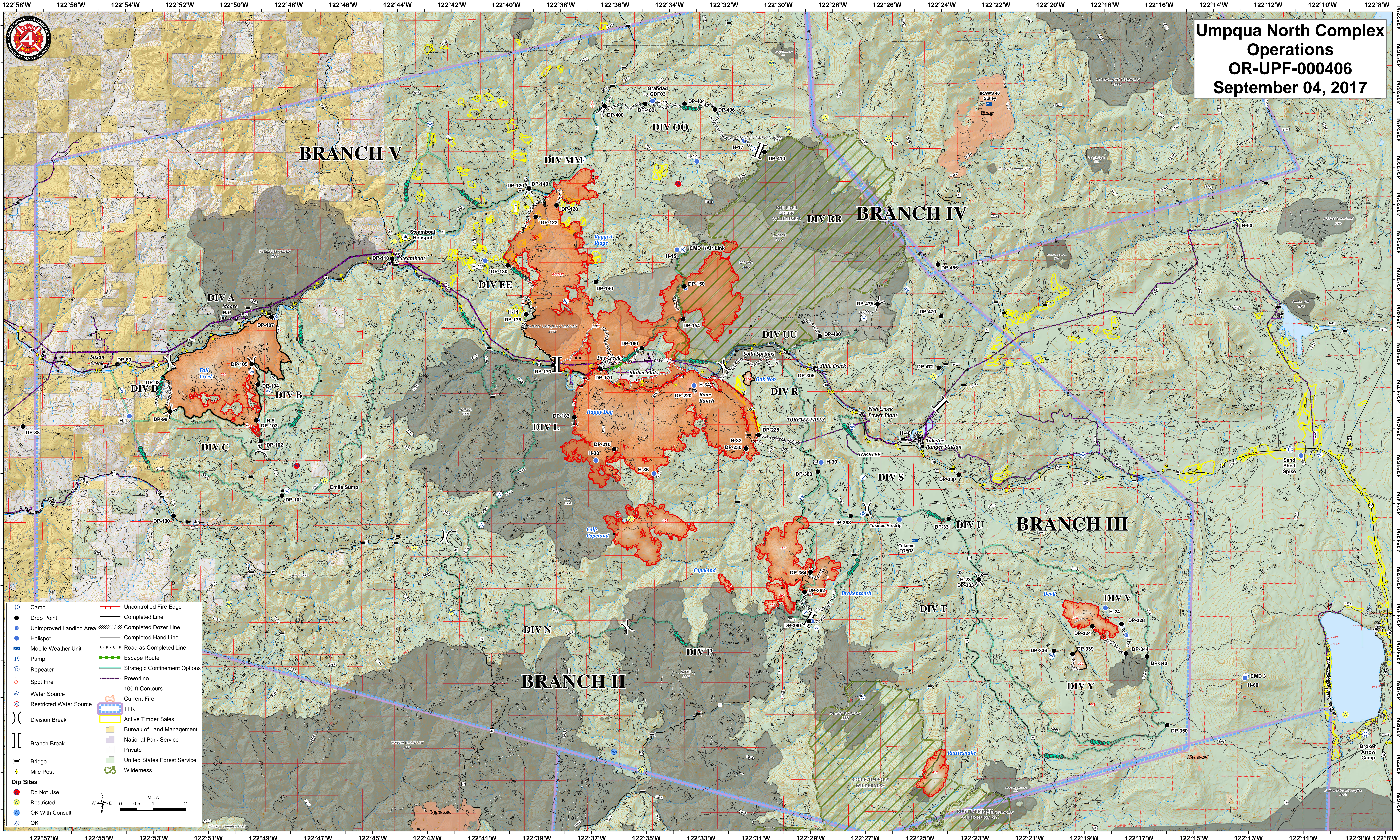


**Umpqua North Complex
Operations
OR-UPF-000406
September 04, 2017**



	Camp		Uncontrolled Fire Edge
	Drop Point		Completed Line
	Unimproved Landing Area		Completed Dozer Line
	Helispot		Completed Hand Line
	Mobile Weather Unit		Road as Completed Line
	Pump		Escape Route
	Repeater		Strategic Confinement Options
	Spot Fire		100 ft Contours
	Water Source		Current Fire
	Restricted Water Source		TFR
	Division Break		Active Timber Sales
	Branch Break		Bureau of Land Management
	Bridge		National Park Service
	Mile Post		Private
	Do Not Use		United States Forest Service
	Restricted		Wilderness
	OK With Consult		
	OK		

