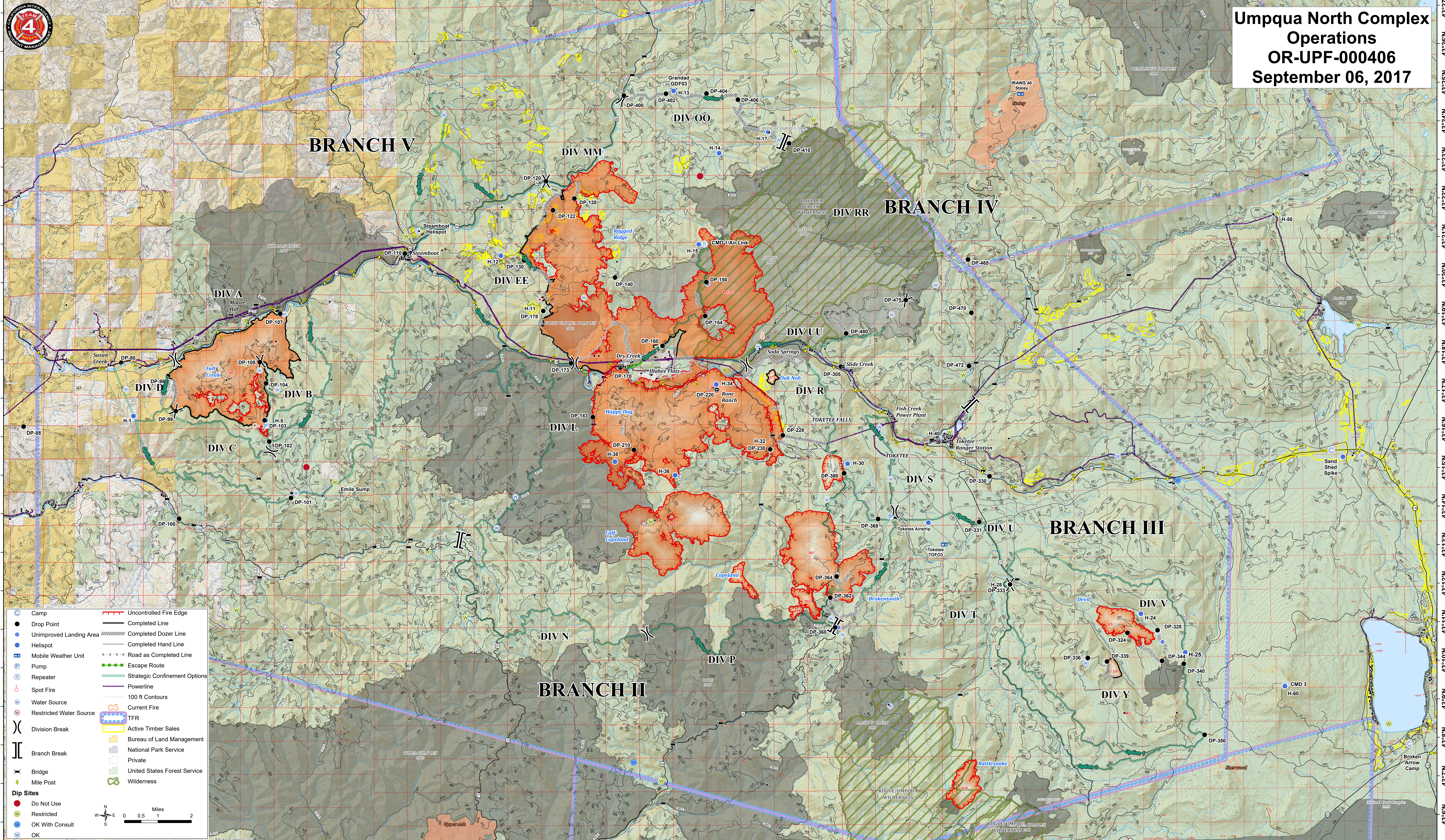


122°58'W 122°56'W 122°54'W 122°52'W 122°50'W 122°48'W 122°46'W 122°44'W 122°42'W 122°40'W 122°38'W 122°36'W 122°34'W 122°32'W 122°30'W 122°28'W 122°26'W 122°24'W 122°22'W 122°20'W 122°18'W 122°16'W 122°14'W 122°12'W 122°10'W 122°8'W



**Umpqua North Complex**  
**Operations**  
**OR-UPF-000406**  
**September 06, 2017**

	Camp		Uncontrolled Fire Edge
	Drop Point		Completed Line
	Unimproved Landing Area		Completed Dozer Line
	Helispot		Completed Hand Line
	Mobile Weather Unit		Road as Completed Line
	Pump		Escape Route
	Repeater		Strategic Confinement Options
	Spot Fire		Powerline
	Water Source		100 ft Contours
	Restricted Water Source		Current Fire
	Division Break		TFR
	Branch Break		Active Timber Sales
	Bridge		Bureau of Land Management
	Mile Post		National Park Service
	Dip Sites		Private
	Do Not Use		United States Forest Service
	Restricted		Wilderness
	OK With Consult		
	OK		

0 0.5 1 2 Miles

122°58'W 122°56'W 122°54'W 122°52'W 122°50'W 122°48'W 122°46'W 122°44'W 122°42'W 122°40'W 122°38'W 122°36'W 122°34'W 122°32'W 122°30'W 122°28'W 122°26'W 122°24'W 122°22'W 122°20'W 122°18'W 122°16'W 122°14'W 122°12'W 122°10'W 122°8'W

43°27'N 43°26'N 43°25'N 43°24'N 43°23'N 43°22'N 43°21'N 43°20'N 43°19'N 43°18'N 43°17'N 43°16'N 43°15'N 43°14'N 43°13'N 43°12'N 43°11'N 43°10'N 43°9'N 43°8'N 43°7'N 43°6'N