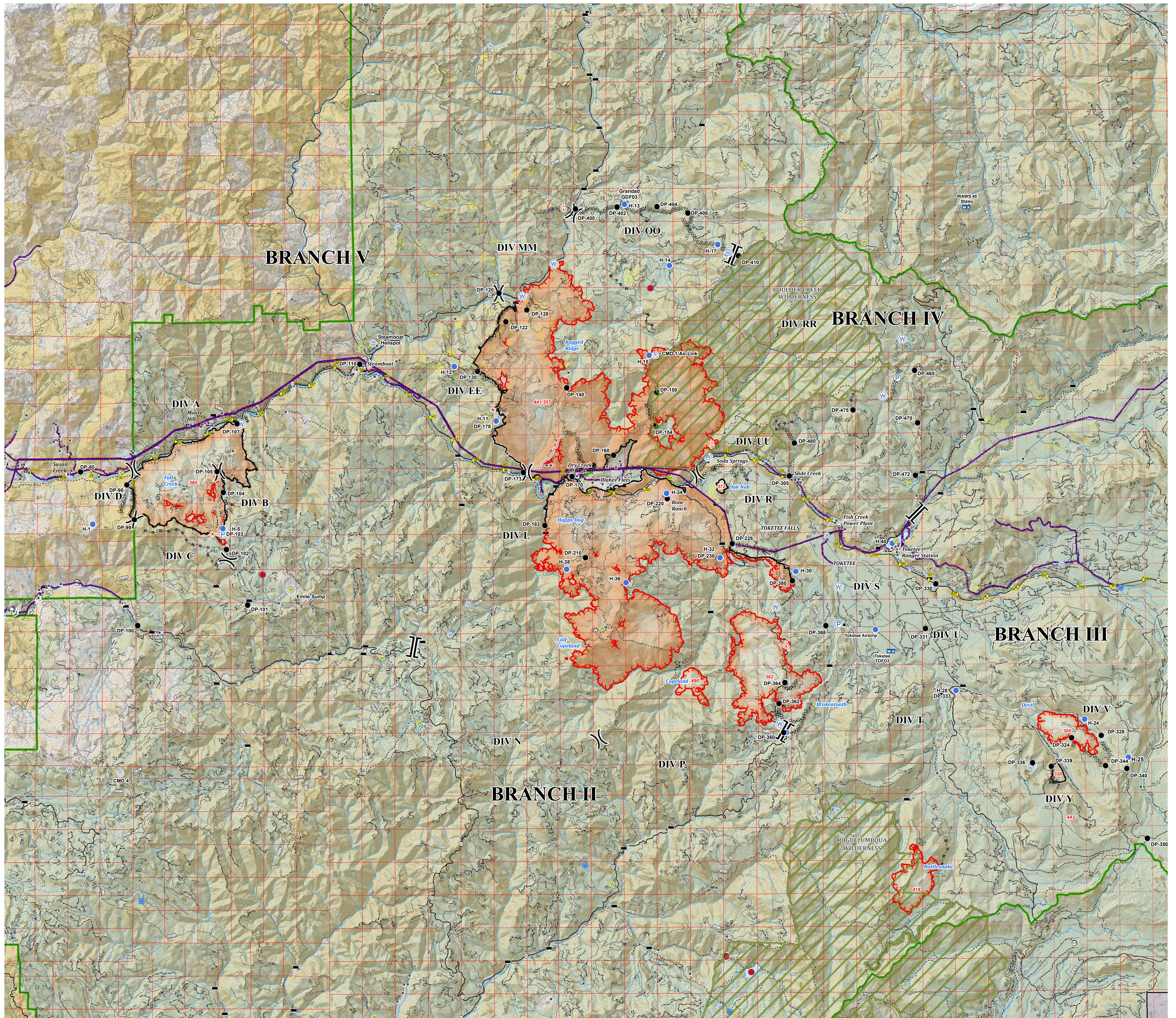


Operations
 Umpqua North
 Complex
 OR-UPF-000406
 09/09/2017
 Whole Complex



- Structures
- Drop Point
- Unimproved Landing Area
- Helispot
- W Mobile Weather Unit
- P Pump
- R Repeater
- Spot Fire
- Staging Area
- W Water Source
- W Restricted Water Source
- () Division Break
- || Branch Break
- Dip Sites
- Do Not Use
- W Restricted
- W OK With Consult
- W OK
- Powerline
- Uncontrolled Fire Edge
- Completed Line
- Completed Dozer Line
- Completed Hand Line
- R · R · R · R · R Road as Completed Line
- Escape Route
- National Forest Boundary
- Bureau of Land Management
- National Park Service
- Private
- United States Forest Service
- Wilderness

