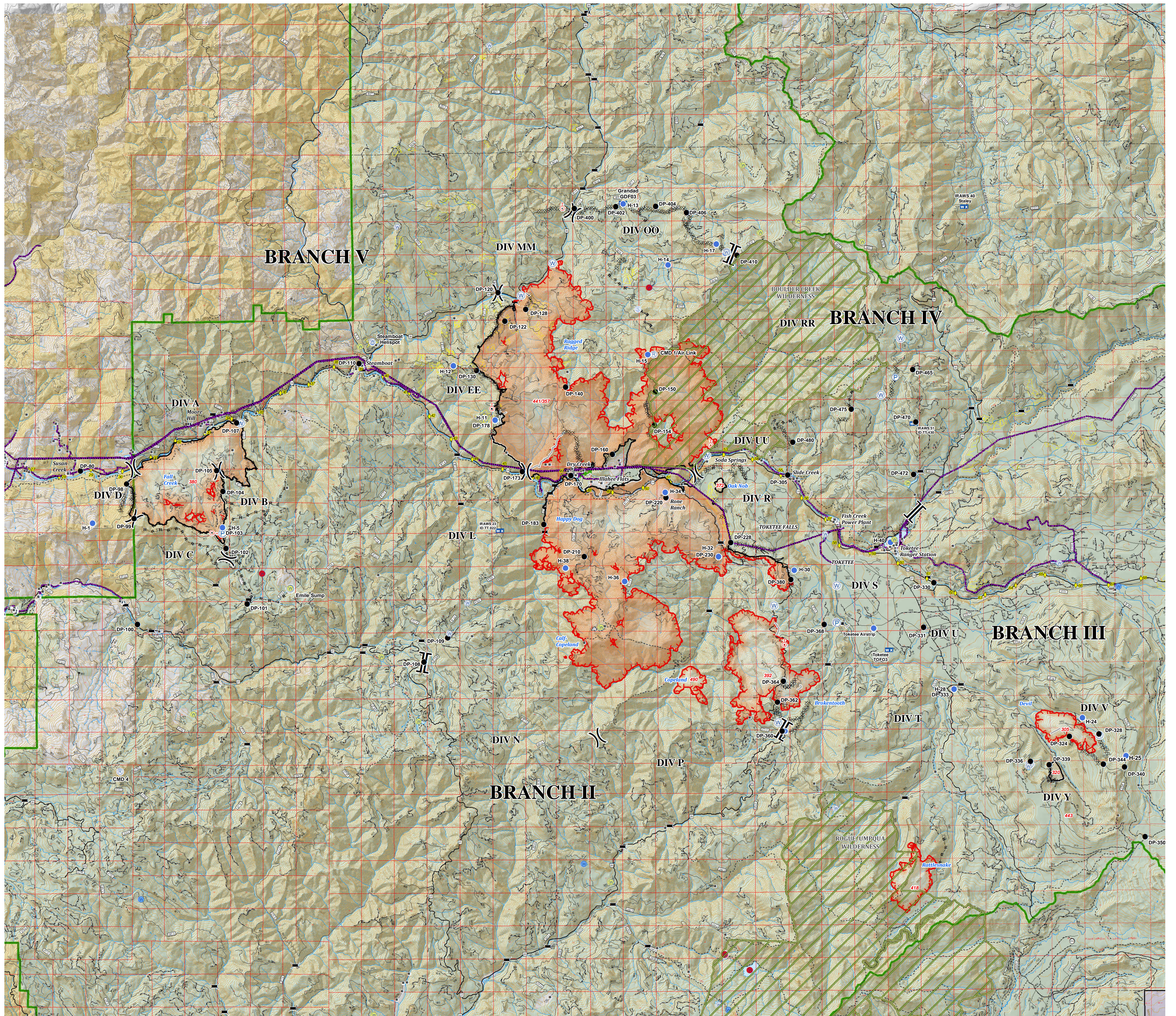


Operations
 Umpqua North
 Complex
 OR-UPF-000406
 09/10/2017
 Whole Complex



- Structures
- Drop Point
- Unimproved Landing Area
- Helispot
- Ⓜ Mobile Weather Unit
- Ⓟ Pump
- Ⓡ Repeater
- Ⓢ Spot Fire
- Ⓣ Staging Area
- Ⓦ Water Source
- Ⓦ Restricted Water Source
-) (Division Break
- || Branch Break
- Dip Sites
- Do Not Use
- Ⓦ Restricted
- Ⓦ OK With Consult
- Ⓦ OK
- Powerline
- Uncontrolled Fire Edge
- Completed Line
- Completed Dozer Line
- Completed Hand Line
- R · R · R · R · R Road as Completed Line
- Escape Route
- National Forest Boundary
- Bureau of Land Management
- National Park Service
- Private
- United States Forest Service
- Wilderness

