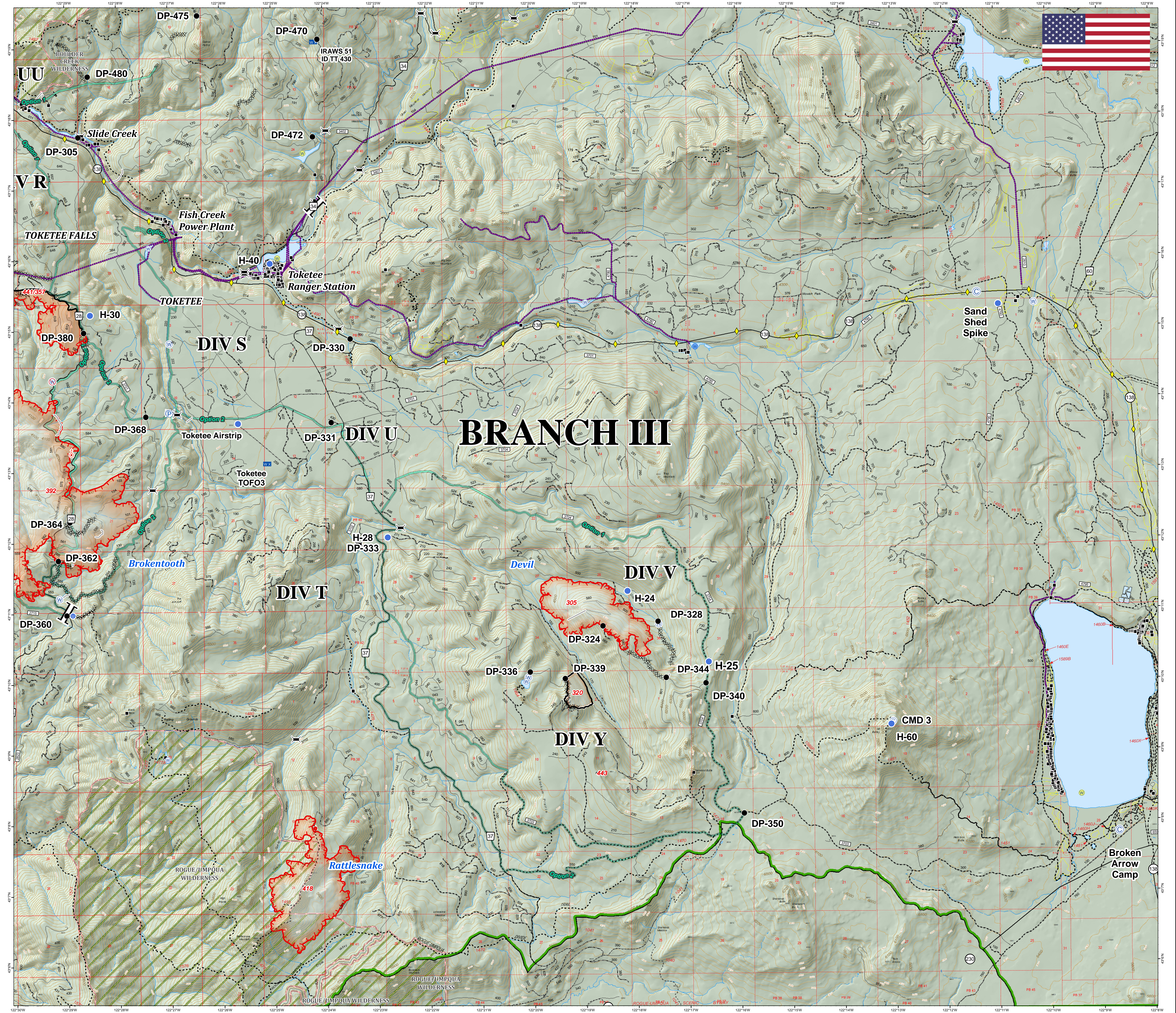




- Camp
- Drop Point
- Unimproved Landing Area
- Helipad
- Mobile Weather Unit
- Pump
- Repeater
- Spot Fire
- Water Source
- Restricted Water Source
- Branch Break
- Structures
- Mile Post
- Bridge
- Dip Sites**
- Do Not Use
- Restricted
- OK With Consult
- OK
- Powerline
- Uncontrolled Fire Edge
- Completed Line
- Completed Dozer Line
- Completed Hand Line
- Road as Completed Line
- Contours 100' Intervals
- Wilderness
- Active Timber Sales
- National Forest Boundary
- United States Forest Service



BRANCH III

