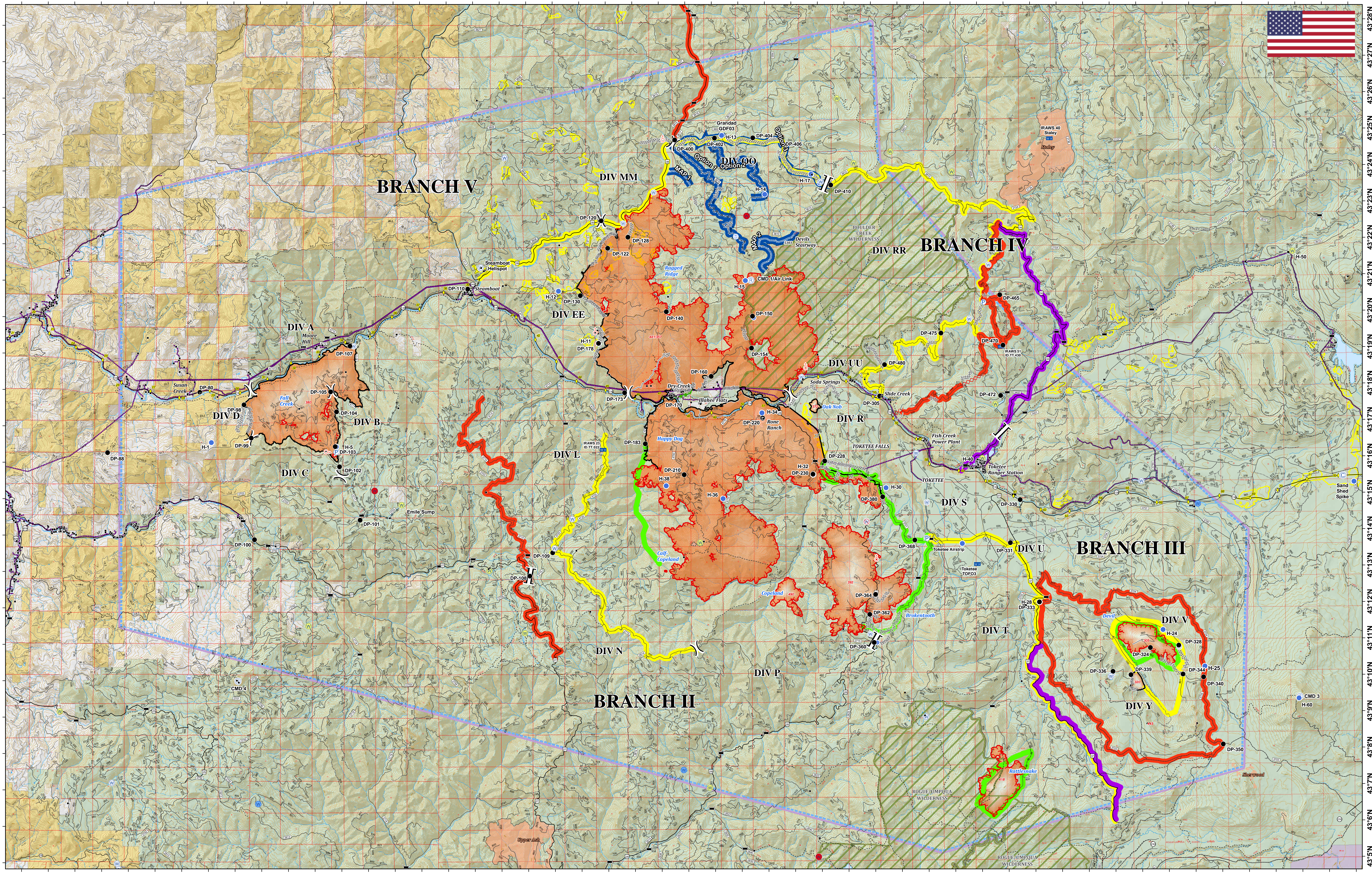
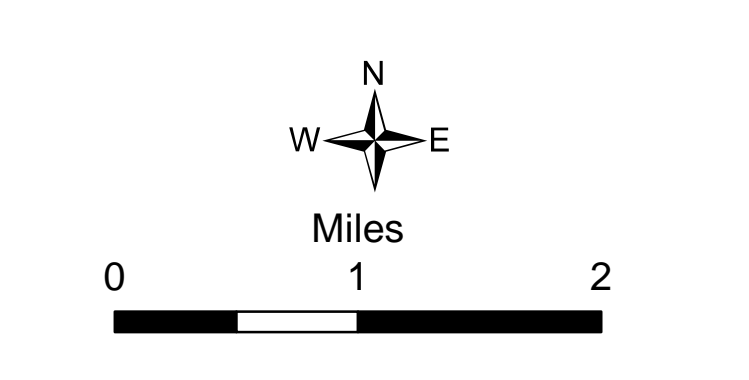


Planning
 Umpqua North
 Complex
 OR-UPF-000406
 09/11/2017



- PACE**
- █ Primary **Fire edge is PRIMARY. Will monitor by ground, aerial platform and vantage points
 - █ Alternate
 - █ Alternate Dozer
 - █ Contingency
 - █ Contingency Dozer
 - █ Emergency
 - █ Management Evaluation Points
 - C Camp
 - Drop Point
 - Unimproved Landing Area
 - Helispot
 - Mobile Weather Unit
 - P Pump
 - R Repeater
 - Spot Fire
 - S Staging
 - W Water Source
 - W Restricted Water Source
 -) Division Break
 -] Branch Break
 - = Bridge
 - M Mile Post
 - Dip Sites**
 - Do Not Use
 - Restricted
 - OK With Consult
 - OK
 - █ Uncontrolled Fire Edge
 - █ Completed Line
 - █ Completed Dozer Line
 - █ Completed Hand Line
 - - - Road as Completed Line
 - █ Escape Route
 - █ Powerline
 - █ 100 ft Contours
 - █ Current Fire
 - █ TFR
 - █ Active Timber Sales
 - █ Bureau of Land Management
 - █ National Park Service
 - █ Private
 - █ United States Forest Service
 - █ Wilderness



123°1'W 122°59'W 122°57'W 122°55'W 122°53'W 122°51'W 122°49'W 122°47'W 122°45'W 122°43'W 122°41'W 122°39'W 122°37'W 122°35'W 122°33'W 122°31'W 122°29'W 122°27'W 122°25'W 122°23'W 122°21'W 122°19'W 122°17'W 122°15'W 122°13'W 122°11'W

43°5'N 43°6'N 43°7'N 43°8'N 43°9'N 43°10'N 43°11'N 43°12'N 43°13'N 43°14'N 43°15'N 43°16'N 43°17'N 43°18'N 43°19'N 43°20'N 43°21'N 43°22'N 43°23'N 43°24'N 43°25'N 43°26'N 43°27'N 43°28'N